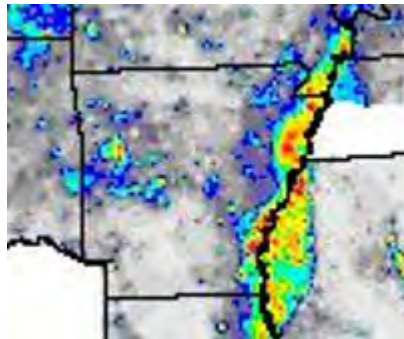
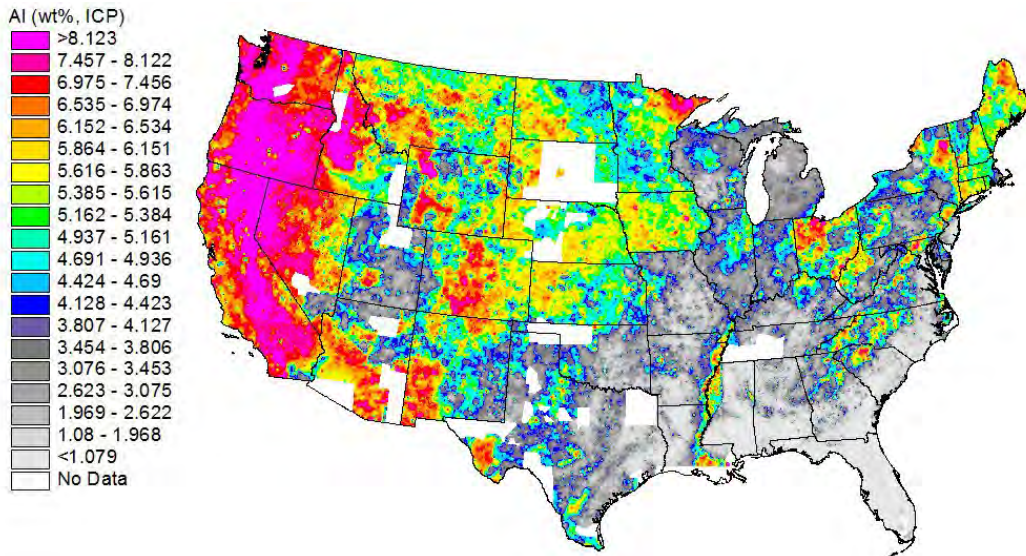


Aluminum (Al) ICP40



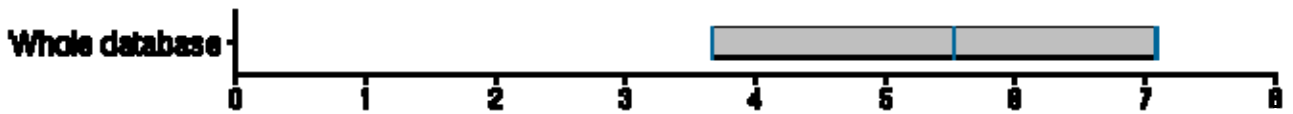
This is a data field of type double

Category: [Analyses by ICP/Acid dissolution](#)

Description: Al (wt%); Al (wt%) by Inductively Coupled Plasma Spectrometry after acid dissolution. Negative values indicate a measurement below detection limit. Origin: USGS. Further documentation is at <http://www-tin.er.usgs.gov/geochem/doc/analysis.htm>. Data quality for this analytical method for this element is very good.

Completeness and rank statistics:

Area	Count	Empty	Distinct	Minimum	25th %	Median	75th %	Maximum
Whole database	75423	5650	8368	0.005	3.67	5.531	7.094	60.3



A box-and-whisker plot shows, for each selected area, the minimum and maximum values as "whiskers", lines extending outward from the "box" formed by the 25th and 75th percentile values. The median is shown by a vertical line in the box. The data from the selected areas are shown both separately and combined, along with the database as a whole. Whiskers are not shown for the box depicting the whole database.

Same data, log-transformed (base 10):



Accessibility FOIA Privacy Policies and Notices



U.S. Department of the Interior | U.S. Geological Survey

URL: http://tin.er.usgs.gov/geochem/describe.php?fieldname=AL_ICP40

Page Contact Information: pschweitzer@usgs.gov

Page Last modified: 10:04 on 09-Jan-2008

County by County data for Arkansas for Aluminum is available online at <http://tin.er.usgs.gov/geochem/doc/averages/countydata.htm>

Compiled by AGS from USGS data, August, 2008