



Unreclaimed Coal Mines in the Western Half of the Arkansas Valley Coal Field Area

Camille Gernhart and Ciara Mills
2025

About The Map

This is one of two maps in the Arkansas Coal region for the Arkansas Mining Program. The Arkansas Mining Program works to reclaim coal mines that were abandoned before 1977 when stricter mining laws were enacted. This map shows land disturbances suspected to be mining areas in the western half of the coal region, which covers Sebastian County and portions of Crawford, Franklin, Logan, and Scott counties. The second map shows land disturbances in the eastern half of the region in Franklin, Johnson, Logan, Scott, Yell, Pope, Conway and Perry counties. The locations on these maps will be used to target areas in need of reclamation.

Light detection and ranging data (LiDAR), aerial photography, and historic publications were used to identify potentially un-reclaimed surface and underground coal mines. All features are labeled with corresponding numbers in a companion database.

Symbols

- County Boundary
- Surface and Underground Mines
- Active Mines
- Surface Mines
- Unknown
- 7.5 Quadrangle Boundary
- Mine/feature number
- ALMA Quadrangle name

Sources

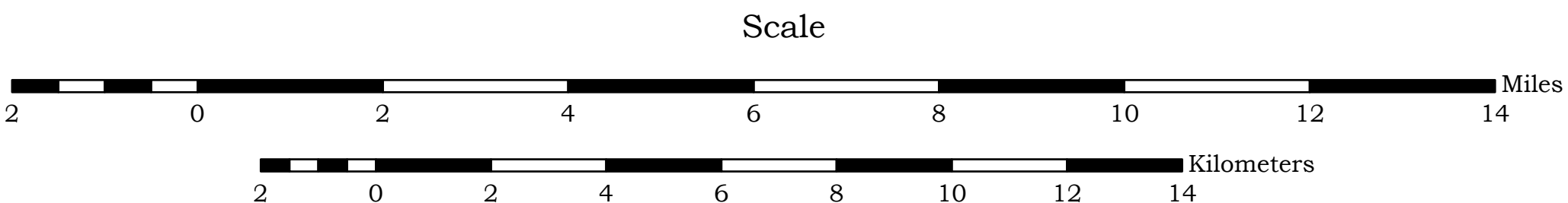
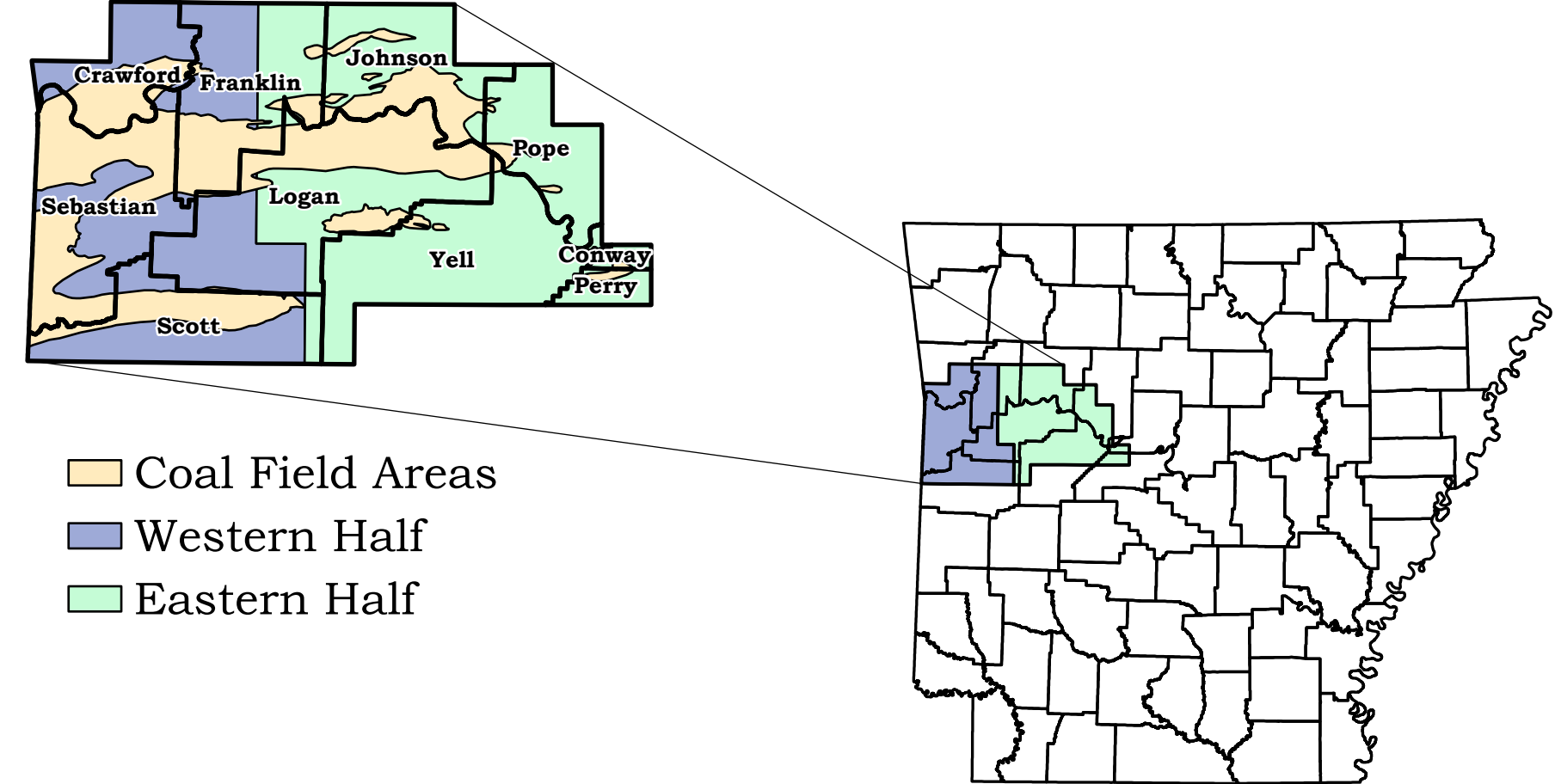
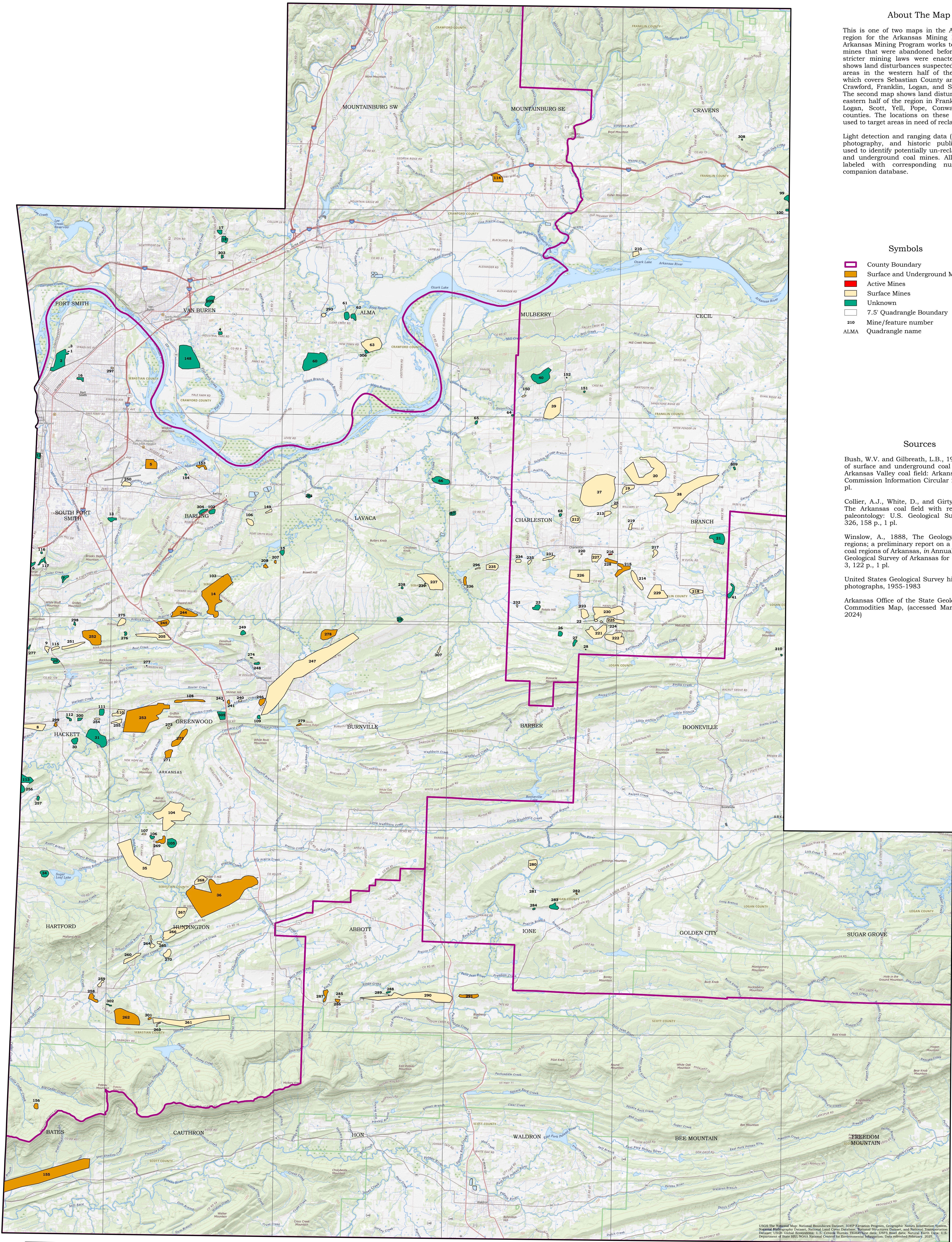
Bush, W.V. and Gilbreath, L.B., 1978, Inventory of surface and underground coal mines in the Arkansas Valley coal field: Arkansas Geological Commission Information Circular 20-L, 15 p., 1 pl.

Collier, A.J., White, D., and Girty, G.H., 1907, The Arkansas coal field with reports on the paleontology: U.S. Geological Survey Bulletin 326, 158 p., 1 pl.

Winslow, A., 1888, The Geology of the coal regions; a preliminary report on a portion of the coal regions of Arkansas, in Annual Report of the Geological Survey of Arkansas for 1888, Volume 3, 122 p., 1 pl.

United States Geological Survey historical aerial photographs, 1955-1983

Arkansas Office of the State Geologist. Mineral Commodities Map, (accessed March-September 2024)



Disclaimer

Although this map was compiled from digital data that was successfully processed on a computer system using ESRI Pro 3.x software at the Office of the State Geologist (OSG), no warranty, expressed or implied, is made by the OSG regarding the utility of the data on any other system, nor shall the act of distribution constitute any such warranty. The OSG does not guarantee this map or digital data to be free of errors or assume liability for interpretations from this map or digital data, or decisions based thereon.

Acknowledgments

This map was produced as part of a Memorandum of Agreement within the Department of Energy and Environment between the Mining Program and the Office of the State Geologist. Because the Arkansas Coal region is quite large, the two-year project was divided into a western half and an eastern half.