

C NORTH

SOUTH C'

C-1
 Anschutz Corp.
 M. Baker et ux No. 1
 Sec. 31, T. 13 N., R. 26 W.

C-2
 Arkansas Western Gas Co.
 Hillard-Federal No. 1
 Sec. 16, T. 12 N., R. 26 W.

C-3
 Arkansas Western Gas Co.
 Elder No. 1-B
 Sec. 8, T. 11 N., R. 26 W.

C-4
 Arkansas Western Gas Co.
 V. Tede No. 1-5
 Sec. 5, T. 10 N., R. 26 W.

C-5
 Hanna Oil and Gas Co.
 Altha No. 1
 Sec. 21, T. 10 N., R. 26 W.

C-6
 J. M. Huber Corp.
 R. Moore No. 1
 Sec. 4, T. 9 N., R. 26 W.

C-7
 Tenneco Oil Co.
 C. Allen No. 1-15
 Sec. 15, T. 9 N., R. 26 W.

C-8
 Arkansas Louisiana Gas Co.
 Adams-King No. 1
 Sec. 33, T. 9 N., R. 26 W.

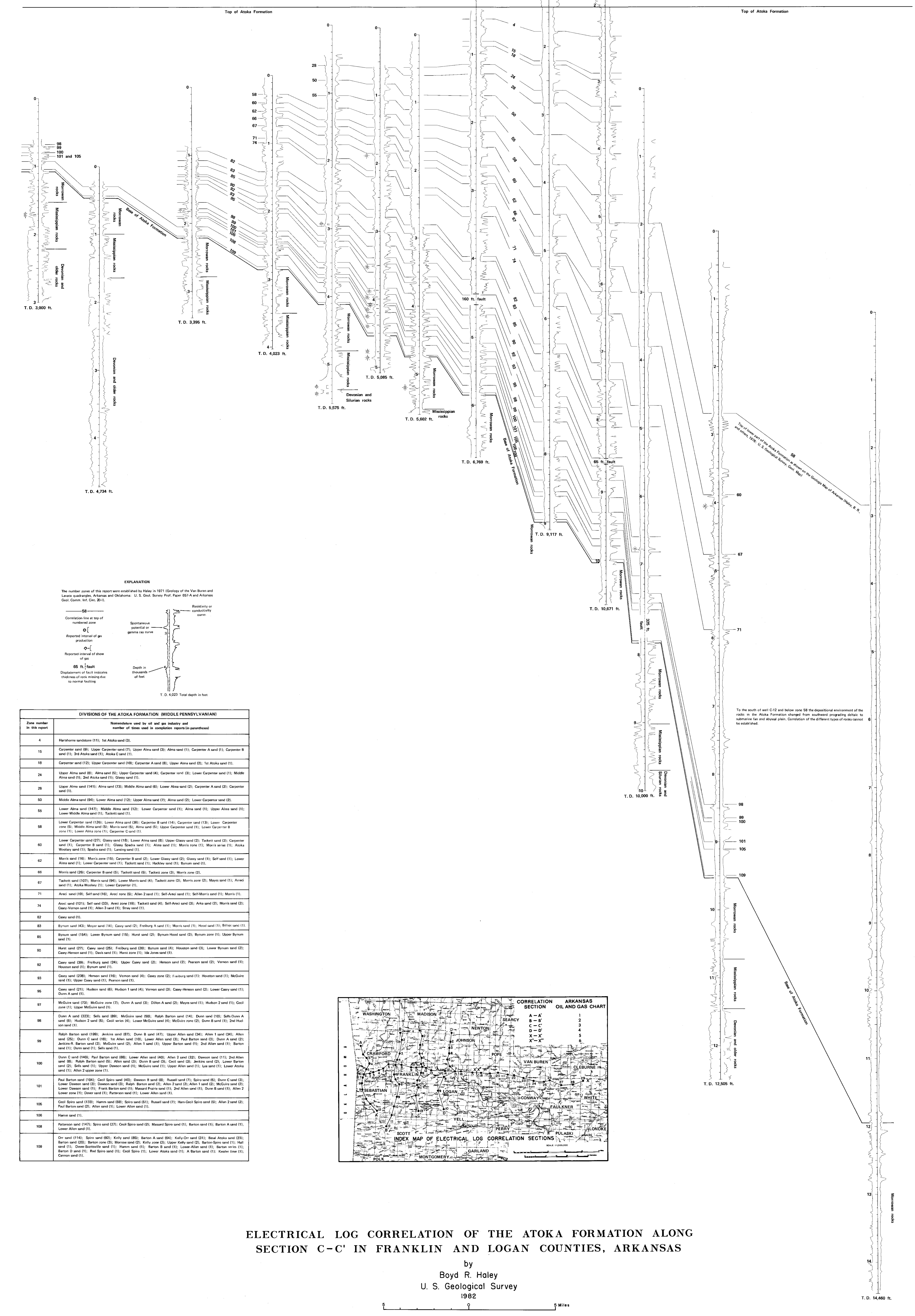
C-9
 Stephens Production Co.
 Acee Pure Milk Co. No. 2
 Sec. 30, T. 8 N., R. 26 W.

C-10
 Tenneco Oil Co.
 Paris Unit No. 1
 Sec. 7, T. 7 N., R. 26 W.

C-11
 Arkansas Louisiana Gas Co.
 K. W. Homer No. 1
 Sec. 20, T. 7 N., R. 26 W.

C-12
 Socony-Mobil Oil Co.
 C. E. Isom Unit No. 1
 Sec. 12, T. 6 N., R. 27 W.

C-13
 Pacific Oil and Gas Co.
 P. Garner No. 1
 Sec. 29, T. 5 N., R. 26 W.



EXPLANATION

The number zone of this report were established by Haley in 1971 (Geology of the Van Buren and Lenoir quadrangles, Arkansas and Oklahoma: U. S. Geol. Survey Prof. Paper 65-A and Arkansas Geol. Comm. Inf. Circ. 20-1).

— 58 — Correlation line at top of numbered zone

○ Reported interval of gas production

○ Reported interval of show of gas

65 ft. fault Displacement of fault indicates thickness of rock missing due to normal faulting

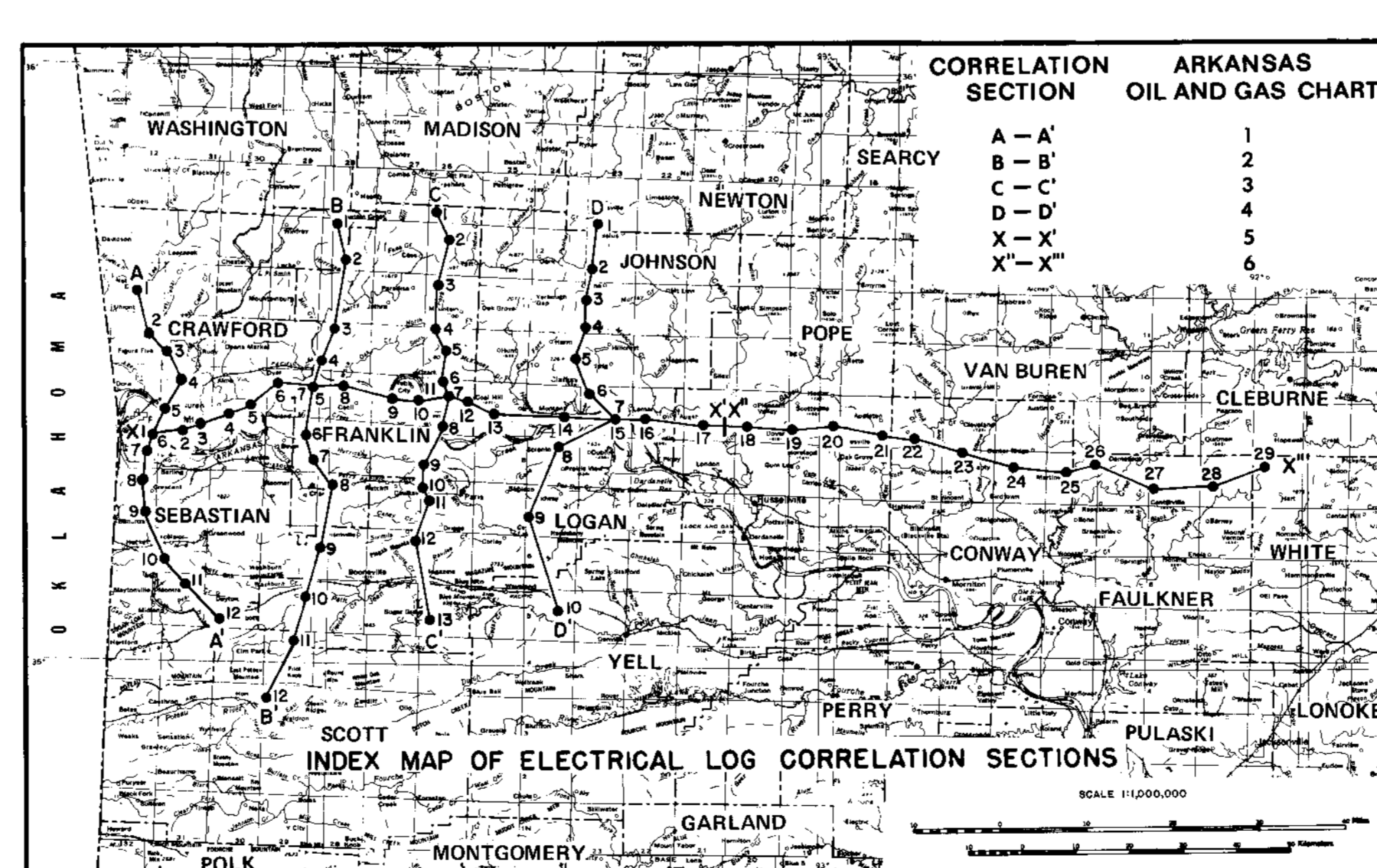
Resistivity or conductivity curve

Spontaneous potential or gamma ray curve

Depth in thousands of feet

T. D. 4,023 Total depth in feet

Zone number in this report	Nomenclature used by oil and gas industry and number of times used in completion reports (in parentheses)
4	Hartshorn sandstone (11); 1st Atoka sand (3).
15	Carpenter sand (8); Upper Carpenter sand (7); Upper Alma sand (3); Alma sand (1); Carpenter A sand (1); Carpenter B sand (1); 2nd Atoka sand (1); Atoka C sand (1).
18	Carpenter sand (12); Upper Carpenter sand (10); Carpenter A sand (8); Upper Alma sand (2); 1st Atoka sand (1).
24	Upper Alma sand (8); Alma sand (5); Upper Carpenter sand (4); Carpenter sand (3); Lower Carpenter sand (1); Middle Alma sand (1); 2nd Atoka sand (1); Glassy sand (1).
26	Upper Alma sand (14); Alma sand (7); Middle Alma sand (8); Lower Alma sand (2); Carpenter A sand (2); Carpenter sand (1).
50	Middle Alma sand (94); Lower Alma sand (12); Upper Alma sand (7); Alma sand (2); Lower Carpenter sand (2).
55	Lower Alma sand (147); Middle Alma sand (12); Lower Carpenter sand (1); Alma sand (1); Upper Alma sand (1); Lower Middle Alma sand (1); Tackett sand (1).
58	Lower Carpenter sand (126); Lower Alma sand (38); Carpenter B sand (14); Carpenter sand (13); Lower Carpenter zone (5); Middle Alma sand (5); Morris sand (5); Alma sand (5); Upper Carpenter sand (1); Lower Carpenter B zone (1); Lower Alma zone (1); Carpenter C sand (1).
60	Lower Carpenter sand (27); Glassy sand (18); Lower Alma sand (8); Upper Glassy sand (2); Tackett sand (2); Carpenter sand (1); Carpenter B sand (1); Glassy Sands sand (1); Alma sand (1); Morris zone (1); Morris series (1); Atoka Woolley sand (1); Soda sand (1); Loring sand (1).
62	Morris sand (16); Morris zone (15); Carpenter B sand (2); Lower Glassy sand (2); Glassy sand (1); Self sand (1); Lower Alma sand (1); Lower Carpenter sand (1); Tackett sand (1); Hackley sand (1); Byrum sand (1).
66	Morris sand (26); Carpenter B sand (5); Tackett sand (5); Tackett zone (3); Morris zone (2).
67	Tackett sand (107); Morris sand (94); Lower Morris sand (4); Tackett zone (3); Morris zone (2); Mays sand (1); Aneel sand (1); Aloka Woolley sand (1); Lower Carpenter (1).
71	Aneel sand (19); Self sand (16); Aneel zone (8); Allen 2 sand (1); Self-Aneel sand (1); Self-Morris sand (1); Morris (1).
74	Aneel sand (121); Self sand (32); Aneel zone (19); Tackett sand (4); Self-Aneel sand (3); Arka sand (2); Morris sand (2); Casey-Vernon sand (1); Allen 3 sand (1); Straw sand (1).
82	Casey sand (1).
83	Byrum sand (42); Moyer sand (14); Casey sand (2); Freiburg A sand (1); Morris sand (1); Hood sand (1); Billon sand (1).
85	Byrum sand (154); Lower Byrum sand (15); Hurst sand (2); Byrum Hood sand (2); Byrum zone (1); Upper Byrum sand (1).
90	Hurst sand (27); Casey sand (25); Freiburg sand (20); Byrum sand (4); Houston sand (1); Lower Byrum sand (2); Casey-Henson sand (1); Davis sand (1); Hurst zone (1); Ma Jones sand (1).
92	Casey sand (39); Freiburg sand (24); Upper Casey sand (2); Herson sand (2); Pearson sand (2); Vernon sand (1); Houston sand (1); Byrum sand (1).
93	Casey sand (238); Herson sand (16); Vernon sand (4); Casey zone (2); Freiburg sand (1); Houston sand (1); McGuire sand (1); Slope Casey sand (1); Pearson sand (1).
96	Casey sand (21); Hudson sand (8); Hudson 1 sand (4); Vernon sand (3); Casey-Henson sand (2); Lower Casey sand (1); Dunn A sand (1).
97	McGuire sand (23); McGuire zone (7); Dunn A sand (3); Dillon A sand (2); Mays sand (1); Hudson 2 sand (1); Owl zone (1); Upper McGuire sand (1).
98	Dunn A sand (223); Self sand (89); McGuire sand (50); Ralph Barton sand (14); Dunn sand (10); Self-Dunn A sand (5); Hudson 2 sand (5); Owl zone (4); Lower McGuire sand (4); McGuire zone (2); Dunn B sand (1); 2nd Hudson sand (1).
99	Ralph Barton sand (199); Jenkins sand (87); Dunn B sand (47); Upper Allen sand (34); Allen 1 sand (34); Allen sand (25); Dunn C sand (18); 1st Allen sand (10); Lower Allen sand (3); Paul Barton sand (3); Dunn A sand (2); Jenkins B Barton sand (2); McGuire sand (2); Allen 1 sand (1); Upper Barton sand (1); 2nd Allen sand (1); Dunn sand (1); Dunn sand (1); Self sand (1).
100	Dunn C sand (140); Paul Barton sand (88); Lower Allen sand (40); Allen 2 sand (32); Dawson sand (1); 2nd Allen sand (8); Ralph Barton sand (5); Allen sand (3); Dunn B sand (3); Coci sand (3); Jenkins sand (2); Lower Barton sand (2); Self sand (1); Upper Dawson sand (1); McGuire sand (1); Upper Allen sand (1); Lee sand (1); Lower Atoka sand (1); Allen 2 upper zone (1); Self sand (1).
101	Paul Barton sand (104); Coci Spira sand (40); Dawson B sand (8); Russell sand (7); Spira sand (5); Dunn C sand (3); Lower Dawson sand (3); Dawson sand (2); Allen 2 sand (2); Allen 1 sand (2); McGuire sand (2); Lower Dawson sand (1); Frank Barton sand (1); Meador-Parris sand (1); 2nd Allen sand (1); Dunn B sand (1); Allen 2 Lower zone (1); Dover sand (1); Patterson sand (1); Lower Allen sand (1).
105	Coci Spira sand (133); Hamm sand (89); Spira sand (51); Russell sand (7); Hamm-Coci Spira sand (5); Allen 2 sand (2); Paul Barton sand (2); Allen sand (1); Lower Allen sand (1).
106	Hamm sand (1).
108	Patterson sand (147); Spira sand (27); Coci Spira sand (2); Massard Spira sand (1); Barton sand (1); Barton A sand (1); Lower Allen sand (1).
109	On sand (114); Spira sand (62); Kelly sand (88); Barton A sand (84); Kelly On sand (31); Beal Atoka sand (23); Barton sand (20); Barton zone (3); Morrow sand (2); Kelly sand (2); Barton Spira sand (1); Hall sand (1); Down-Scottville sand (1); Hamm sand (1); Barton B sand (1); Lower Allen sand (1); Barton series (1); Barton D sand (1); Red Spira sand (1); Coci Spira (1); Lower Atoka sand (1); A Barton sand (1); Keefer zone (1); Cannon sand (1).



ELECTRICAL LOG CORRELATION OF THE ATOKA FORMATION ALONG SECTION C-C' IN FRANKLIN AND LOGAN COUNTIES, ARKANSAS

by
 Boyd R. Haley
 U. S. Geological Survey
 1982

