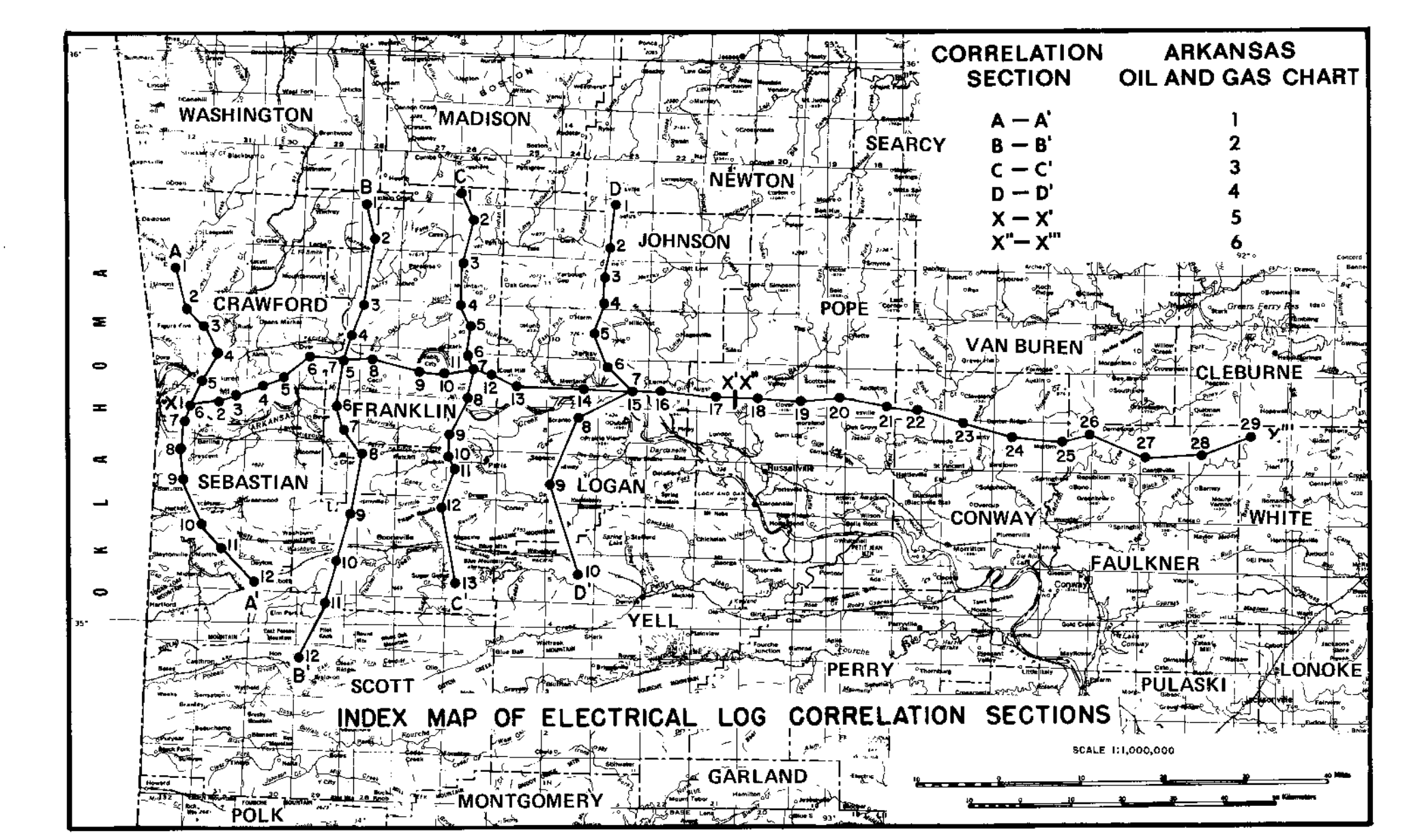
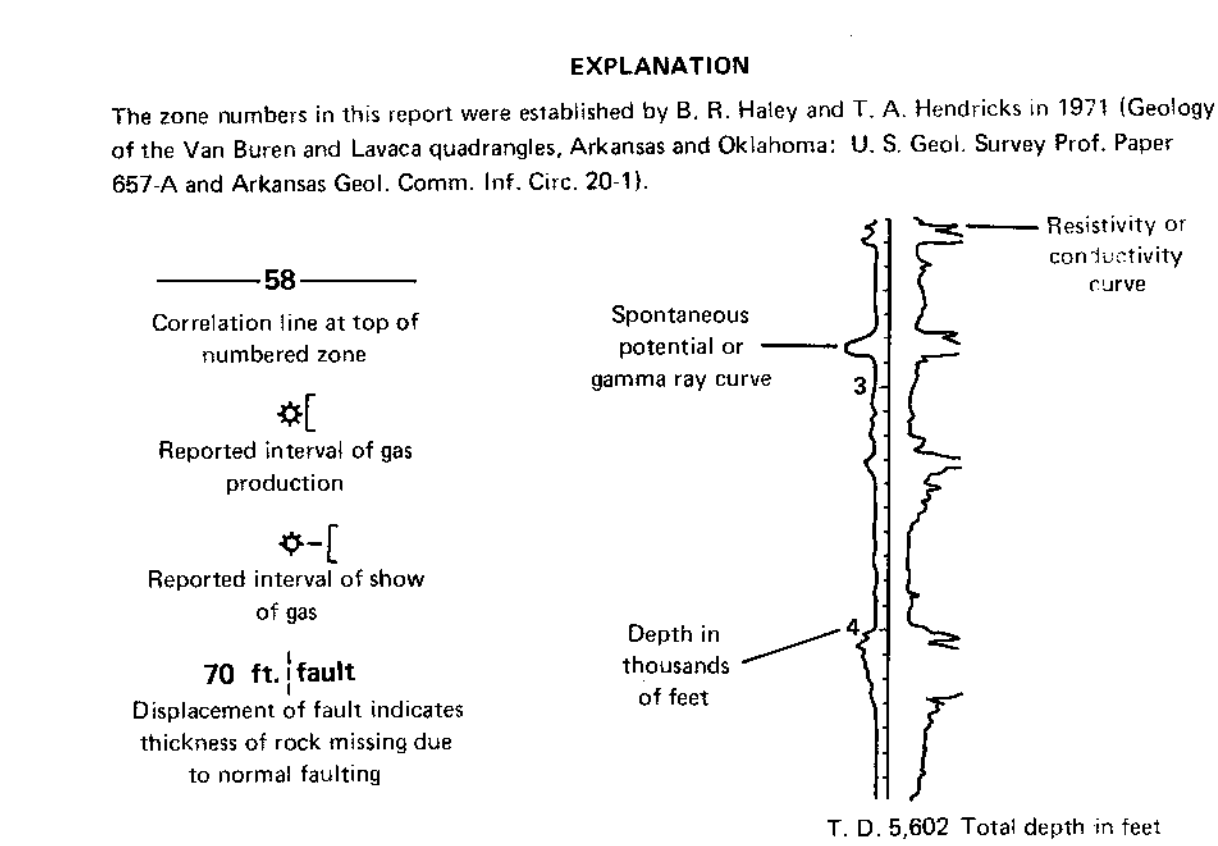


DIVISIONS OF THE ATOKA FORMATION (MIDDLE PENNSYLVANIAN)	
Zone number in this report	Nomenclature used by oil and gas industry and number of times used in completion reports in parentheses
4	Hartshorn sandstone (11); 1st Atoka sand (3)
15	Carpenter sand (9); Upper Carpenter sand (7); Upper Alma sand (3); Alma sand (1); Carpenter A sand (1); Carpenter B sand (1); 2nd Atoka sand (1); Atoka C sand (1)
18	Carpenter sand (12); Upper Carpenter sand (10); Carpenter A sand (8); Upper Alma sand (2); 1st Atoka sand (1)
24	Upper Alma sand (6); Alma sand (5); Upper Carpenter sand (4); Carpenter sand (3); Lower Carpenter sand (1); Middle Alma sand (1); 2nd Atoka sand (1); Glasy sand (1)
28	Upper Alma sand (14); Alma sand (7); Middle Alma sand (8); Lower Alma sand (2); Carpenter A sand (2); Carpenter sand (1)
50	Middle Alma sand (94); Lower Alma sand (12); Upper Alma sand (7); Alma sand (2); Lower Carpenter sand (2)
55	Lower Alma sand (147); Middle Alma sand (11); Lower Carpenter sand (1); Alma sand (1); Upper Alma sand (1); Lower Middle Alma sand (1); Tackett sand (1)
58	Lower Carpenter sand (128); Lower Alma sand (38); Carpenter B sand (14); Carpenter sand (13); Lower Carpenter zone (5); Middle Alma sand (5); Morris sand (5); Alma sand (5); Upper Carpenter sand (1); Lower Carpenter B zone (1); Lower Alma zone (1); Carpenter C sand (1)
60	Lower Carpenter sand (77); Glasy sand (18); Lower Alma sand (8); Upper Glasy zone (2); Tackett sand (2); Carpenter sand (1); Carpenter B sand (1); Glasy Spadra sand (1); Alma sand (1); Morris zone (1); Morris series (1); Atoka Woolley sand (1); Spadra sand (1); Laming sand (1)
62	Morris sand (18); Morris zone (15); Carpenter B sand (7); Lower Glasy sand (2); Glasy sand (1); Self sand (1); Lower Alma sand (1); Lower Carpenter sand (1); Tackett sand (1); Haskilly sand (1); Bynum sand (1)
66	Morris sand (26); Carpenter B sand (5); Tackett sand (5); Tackett zone (3); Morris zone (2)
71	Tackett sand (107); Morris sand (94); Lower Morris sand (4); Tackett zone (3); Morris zone (2); Mayes sand (1); Arco sand (1); Atoka Woolley (1); Lower Carpenter (1)
74	Arco sand (19); Self sand (19); Arco zone (19); Tackett sand (4); Self-Arco sand (3); Arka sand (2); Morris sand (2); Casey-Vernon sand (1); Allen 3 sand (1); Spay sand (1)
82	Casey sand (1)
83	Bynum sand (143); Moyer sand (14); Casey sand (2); Freiburg A sand (1); Morris sand (1); Hood sand (1); Bifault sand (1)

DIVISIONS OF THE ATOKA FORMATION (MIDDLE PENNSYLVANIAN)	
Zone number in this report	Nomenclature used by oil and gas industry and number of times used in completion reports in parentheses
85	Bynum sand (154); Lower Bynum sand (15); Hurst sand (2); Bynum Hood sand (2); Bynum zone (1); Upper Bynum sand (1)
90	Hurst sand (27); Casey sand (25); Freiburg sand (20); Bynum sand (14); Houston sand (3); Lower Bynum sand (2); Casey-Henson sand (1); Doss sand (1); Hurst zone (1); Ma Jones sand (1)
92	Casey sand (28); Freiburg sand (24); Upper Casey sand (2); Henson sand (2); Pearson sand (2); Vernon sand (1); Houston sand (1); Bynum sand (1)
93	Casey sand (228); Henson sand (16); Vernon sand (4); Casey zone (2); Freiburg sand (1); Houston sand (1); McGuire sand (1); Upper Casey sand (1); Pearson sand (1)
95	Casey sand (21); Hudson sand (6); Hudson 1 sand (4); Vernon sand (3); Casey-Henson sand (2); Lower Casey sand (1); Dunn A sand (1)
97	McGuire sand (73); McGuire zone (7); Dunn A sand (3); Dillon A sand (2); Mayes sand (1); Hudson 2 sand (1); Cecil zone (1); Upper McGuire sand (1)
98	Dunn A sand (223); Selfs sand (89); McGuire sand (150); Ralph Barton sand (14); Dunn sand (10); Self-Dunn A sand (9); Hudson 2 sand (6); Cecil series (8); Lower McGuire sand (4); McGuire zone (2); Dunn B sand (1); 2nd Hudson sand (1)
99	Ralph Barton sand (189); Jenkins sand (87); Dunn B sand (47); Upper Allen sand (34); Allen 1 sand (34); Allen sand (25); Dunn C sand (18); 1st Allen sand (10); Lower Allen sand (2); Paul Barton sand (3); Dunn A sand (2); Jenkins B; Barton sand (2); McGuire sand (2); Allen 1 sand (1); Upper Barton sand (1); 2nd Allen sand (1); Barton sand (1); Dunn sand (1); Selfs sand (1)
100	Dunn C sand (140); Paul Barton sand (88); Lower Allen sand (40); Allen 2 sand (22); Dawson sand (11); 2nd Allen sand (8); Ralph Barton sand (5); Allen sand (3); Dunn B sand (3); Cecil sand (2); Jenkins sand (2); Lower Barton sand (2); Selfs sand (1); Upper Devon sand (1); McGuire sand (1); Upper Allen sand (1); Lee sand (1); Upper Atoka sand (1); Allen 2 upper zone (1)
101	Paul Barton sand (104); Cecil Spiro sand (40); Dawson B sand (8); Russell sand (7); Spiro sand (5); Dunn C sand (3); Lower Dawson sand (3); Dawson sand (3); Ralph Barton sand (2); Allen 2 sand (2); Allen 1 sand (2); McGuire sand (2); Lower Dawson sand (1); Frank Barton sand (1); Massard Prairie sand (1); Upper Allen sand (1); 2nd Allen sand (1); Allen 2 Lower zone (1); Dover sand (1); Patterson sand (1); Lower Russell sand (1)
105	Cecil Spiro sand (133); Hamm sand (59); Spiro sand (51); Russell sand (7); Ham-Cecil Spiro sand (5); Allen 2 sand (2); Paul Barton sand (2); Allen sand (1); Lower Allen sand (1)
106	Hamm sand (1)
108	Patterson sand (147); Spiro sand (27); Cecil Spiro sand (2); Massard Prairie sand (1); Barton sand (1); Barton A sand (1); Lower Allen sand (1)
109	Or sand (114); Spiro sand (82); Kelly sand (89); Barton A sand (84); Kelly-Or sand (31); Basal Atoka sand (23); Barton sand (20); Barton zone (3); Morrow sand (2); Kelly zone (2); Upper Kelly sand (2); Barton Spiro sand (1); Hall sand (1); Dover Spoutville sand (1); Hamm sand (1); Barton B sand (1); Lower Allen sand (1); Barton series (1); Barton D sand (1); Red Spiro sand (1); Cecil Spiro (1); Lower Atoka sand (1); A Barton sand (1); Keller time (1); Carson sand (1)



ELECTRICAL LOG CORRELATION OF THE ATOKA FORMATION ALONG SECTION X-X' IN SEBASTIAN, CRAWFORD, FRANKLIN, JOHNSON, AND POPE COUNTIES, ARKANSAS

by
Boyd R. Haley
U. S. Geological Survey
1982

