

X" WEST

EAST X"

X-18
C.S.G. Exploration
Beard No. 1
Sec. 29, T. 9 N., R. 20 W.

X-19
Skelly Oil Co.
J. Jennings No. 1
Sec. 30, T. 9 N., R. 19 W.

X-20
Murphy Corp.
B. Gray Unit No. 1
Sec. 24, T. 9 N., R. 19 W.

X-21
Anderson Prichard Oil Corp.
N. Hays No. 1
Sec. 25, T. 9 N., R. 18 W.

X-22
Arkla Exploration Co.
C. S. Ramsey Heirs No. 1
Sec. 33, T. 9 N., R. 17 W.

X-23
Sunray DX Oil Co.
J. L. Carr No. 1
Sec. 4, T. 8 N., R. 16 W.

X-24
Arkla Exploration Co.
Dancer No. 1
Sec. 16, T. 8 N., R. 15 W.

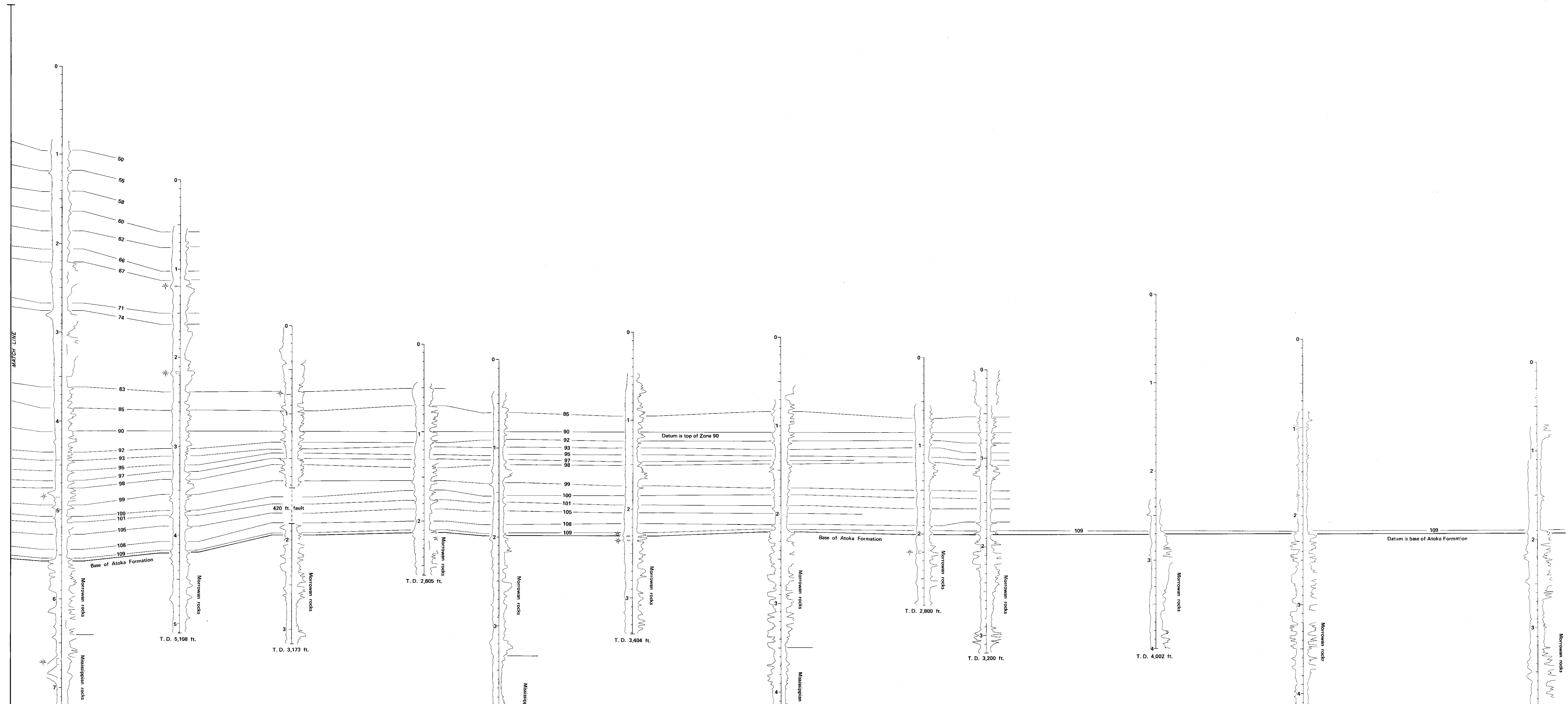
X-25
Anadarko Production Co.
Knapp No. A-1
Sec. 16, T. 8 N., R. 14 W.

X-26
Carter Oil Co.
G. L. Bahner No. 1
Sec. 12, T. 8 N., R. 14 W.

X-27
Stephens Production Co.
S. A. Hovis No. 1
Sec. 30, T. 8 N., R. 12 W.

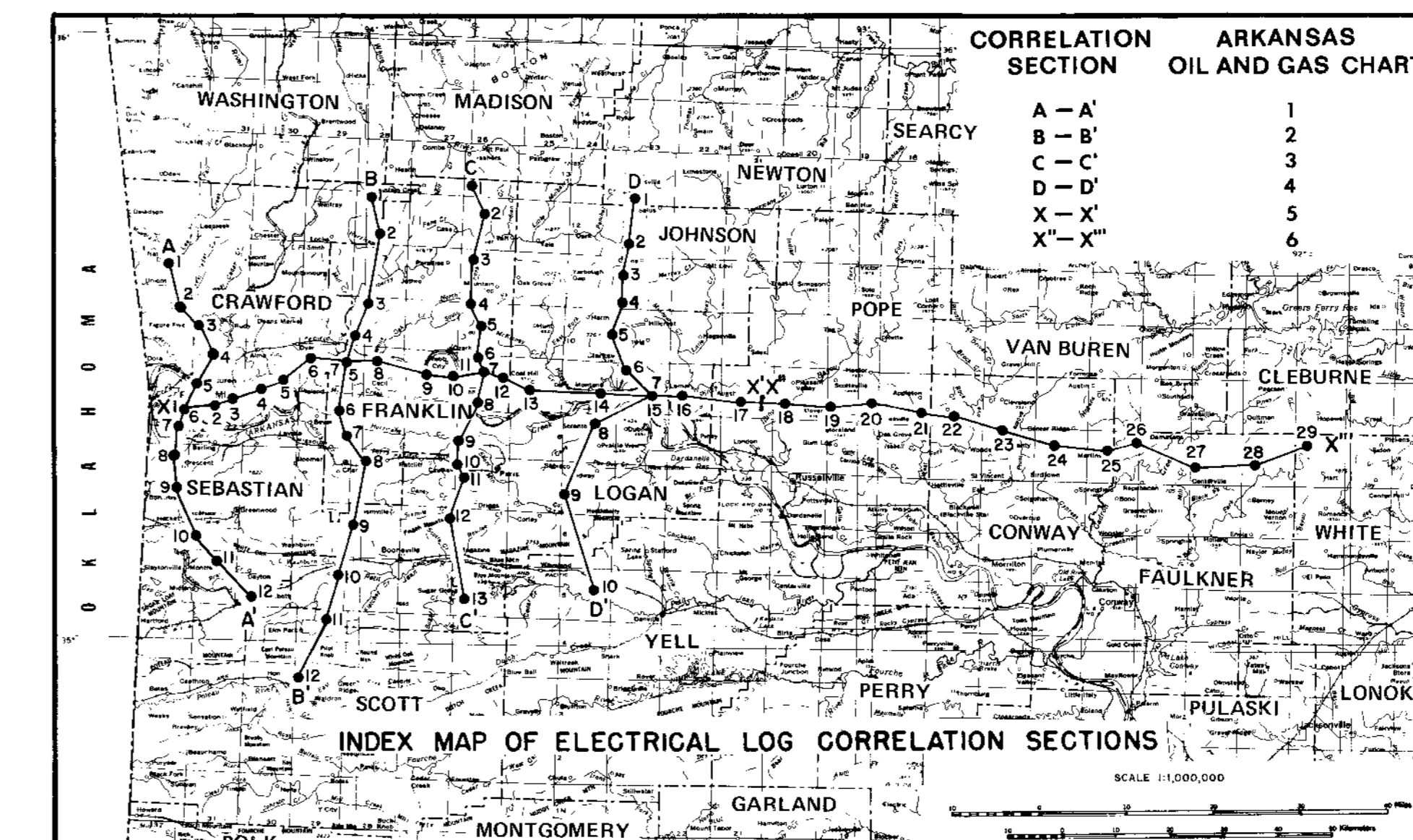
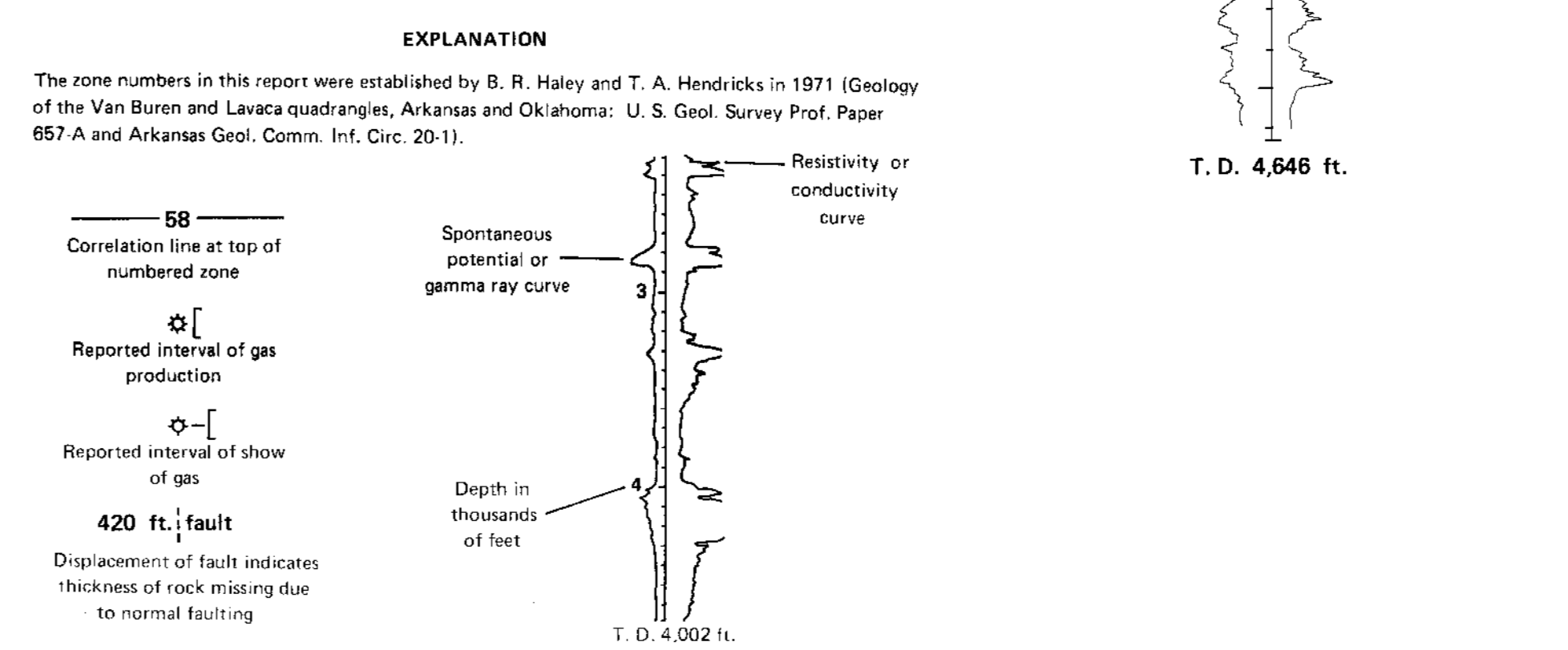
X-28
Diamond Shamrock Corp.
C. H. Rushing No. 1
Sec. 20, T. 8 N., R. 11 W.

X-29
C.S.G. Exploration Co.
Patterson No. 1
Sec. 11, T. 8 N., R. 10 W.



DIVISIONS OF THE ATOKA FORMATION (MIDDLE PENNSYLVANIAN)	
Zone number in this report	Nomenclature used by oil and gas industry and number of times used in completion reports in parentheses
4	Hartshorn sandstone (11); 1st Atoka sand (3)
15	Carpenter sand (9); Upper Carpenter sand (1); Upper Alma sand (3); Alma sand (1); Carpenter A sand (1); Carpenter B sand (1); 2nd Atoka sand (1); Atoka C sand (1)
18	Carpenter sand (12); Upper Carpenter sand (10); Carpenter A sand (8); Upper Alma sand (2); 1st Atoka sand (1)
24	Upper Alma sand (8); Alma sand (8); Upper Carpenter sand (4); Carpenter sand (3); Lower Carpenter sand (1); Middle Alma sand (1); 2nd Atoka sand (1); Grassy sand (1)
28	Upper Alma sand (14); Alma sand (12); Middle Alma sand (6); Lower Alma sand (2); Carpenter A sand (2); Carpenter sand (1)
50	Middle Alma sand (94); Lower Alma sand (12); Upper Alma sand (7); Alma sand (2); Lower Carpenter sand (2)
55	Lower Alma sand (147); Middle Alma sand (12); Lower Carpenter sand (1); Alma sand (1); Upper Alma sand (1); Lower Middle Alma sand (1); Tackett sand (1)
58	Lower Carpenter sand (126); Lower Alma sand (38); Carpenter B sand (14); Carpenter sand (12); Lower Carpenter zone (5); Middle Alma sand (5); Morris sand (5); Alma sand (5); Upper Carpenter sand (1); Lower Carpenter B zone (1); Lower Alma zone (1); Carpenter C sand (1)
60	Lower Carpenter sand (27); Grassy sand (18); Lower Alma sand (8); Upper Grassy sand (2); Tackett sand (2); Carpenter sand (1); Carpenter B sand (1); Glassy Sandstone sand (1); Alma sand (1); Morris zone (1); Morris zone (1); Atoka Woodley sand (1); Sparta sand (1); Lansing sand (1)
62	Morris sand (16); Morris zone (15); Carpenter B sand (2); Lower Grassy sand (2); Grassy sand (1); Self sand (1); Lower Alma sand (1); Lower Carpenter sand (1); Tackett sand (1); Hackley sand (1); Byrum sand (1)
66	Morris sand (26); Carpenter B sand (5); Tackett sand (5); Tackett zone (3); Morris zone (2); Morris zone (1); Arcei sand (1); Atoka Woodley (1); Lower Carpenter (1)
67	Tackett sand (137); Morris sand (84); Lower Morris sand (4); Tackett zone (3); Morris zone (2); Morris zone (1); Arcei sand (1); Atoka Woodley (1); Lower Carpenter (1)
71	Arcei sand (19); Self sand (18); Arcei zone (5); Allen 2 sand (1); Self-Arcei sand (1); Self-Morris sand (1); Morris (1)
74	Arcei sand (121); Self sand (33); Arcei zone (19); Tackett sand (4); Self-Arcei sand (3); Arka sand (2); Morris sand (2); Casey-Vernon sand (1); Allen 3 sand (1); Stray sand (1)
82	Casey sand (1)
83	Byrum sand (43); Myer sand (14); Casey sand (2); Freiburg A sand (1); Morris sand (1); Hood sand (1); Bellows sand (1)
85	Byrum sand (154); Lower Byrum sand (15); Harst sand (2); Byrum-Hood sand (2); Byrum zone (1); Upper Byrum sand (1)
90	Hurst sand (27); Casey sand (25); Freiburg sand (20); Byrum sand (41); Houston sand (3); Lower Byrum sand (2); Casey-Henson sand (1); Davis sand (1); Harst zone (1); Ida Jones sand (1)
92	Casey sand (39); Freiburg sand (24); Upper Casey sand (2); Henson sand (2); Pearson sand (2); Vernon sand (1); Henson sand (1); Byrum sand (1)
93	Casey sand (236); Henson sand (18); Vernon sand (4); Casey zone (2); Freiburg sand (1); Houston sand (1); McGuire sand (1); Upper Casey sand (1); Pearson sand (1)
95	Casey sand (21); Hudson sand (6); Hudson 1 sand (4); Vernon sand (3); Casey-Henson sand (2); Lower Casey sand (1); Dunn A sand (1)

DIVISIONS OF THE ATOKA FORMATION (MIDDLE PENNSYLVANIAN)	
Zone number in this report	Nomenclature used by oil and gas industry and number of times used in completion reports in parentheses
97	McGuire sand (73); McGuire zone (7); Dunn A sand (3); Dillon A sand (2); Mays sand (1); Hudson 2 sand (1); Cecil zone (1); Upper McGuire sand (1)
98	Dunn A sand (322); Self sand (89); McGuire sand (66); Ralph Barton sand (14); Dunn sand (10); Self-Dunn A sand (8); Hudson 2 sand (3); Cecil zone (4); Lower McGuire sand (4); McGuire zone (2); Dunn B sand (1); 2nd Hudson sand (1)
99	Ralph Barton sand (199); Jenkins sand (87); Dunn B sand (47); Upper Allen sand (34); Allen 1 sand (34); Allen sand (29); Dunn C sand (16); 1st Allen sand (3); Paul Barton sand (3); Dunn A sand (2); Jenkins B. Barton sand (2); McGuire sand (2); Allen 1 sand (1); Upper Barton sand (1); 2nd Allen sand (1); Barton sand (1); Dunn sand (1); Self sand (1)
100	Dunn C sand (140); Paul Barton sand (88); Lower Allen sand (40); Allen 2 sand (32); Dawson sand (11); 2nd Allen sand (8); Ralph Barton sand (5); Allen sand (3); Dunn B sand (3); Cecil zone (2); Jenkins sand (2); Lower Barton sand (2); Self sand (1); Upper Dawson sand (1); Massard Prairie sand (1); 2nd Allen sand (1); Dunn B sand (1); Allen 2 Lower zone (1); Dover sand (1); Upper Allen sand (1)
101	Paul Barton sand (104); Cecil Spiro sand (40); Dawson B sand (8); Russell sand (7); Spiro sand (5); Dunn C sand (2); Lower Dawson sand (2); Dawson sand (2); Ralph Barton sand (2); Upper Barton sand (2); Allen 1 sand (2); McGuire sand (2); Lower Dawson sand (1); Frank Barton sand (1); Massard Prairie sand (1); 2nd Allen sand (1); Dunn B sand (1); Allen 2 Lower zone (1); Dover sand (1); Patterson sand (1); Lower Allen sand (1)
105	Cecil Spiro sand (133); Harmon sand (59); Spiro sand (51); Russell sand (7); Harmon Cecil Spiro sand (5); Allen 2 sand (2); Paul Barton sand (2); Allen sand (1); Lower Allen sand (1)
106	Harmon sand (1)
108	Patterson sand (147); Spiro sand (27); Cecil Spiro sand (2); Massard Spiro sand (1); Barton sand (1); Barton A sand (1); Lower Allen sand (1)
109	Dur sand (114); Spiro sand (82); Kelly sand (85); Barton A sand (84); Kelly Oil sand (31); Beal Atoka sand (22); Barton sand (20); Barton zone (2); Morrison sand (2); Kelly zone (2); Upper Kelly sand (2); Barton-Spiro sand (1); Hull sand (1); Dover-Scottville sand (1); Harmon sand (1); Barton B sand (1); Lower Allen sand (1); Barton zone (1); Barton C sand (1); Red Spiro sand (1); Cecil Spiro sand (1); Lower Atoka sand (1); A Barton sand (1); Keiser zone (1); Cannon sand (1)



ELECTRICAL LOG CORRELATION OF THE ATOKA FORMATION ALONG SECTION X"-X" IN POPE, CONWAY, FAULKNER, AND WHITE COUNTIES, ARKANSAS

by
Boyd R. Haley
U. S. Geological Survey
1982

