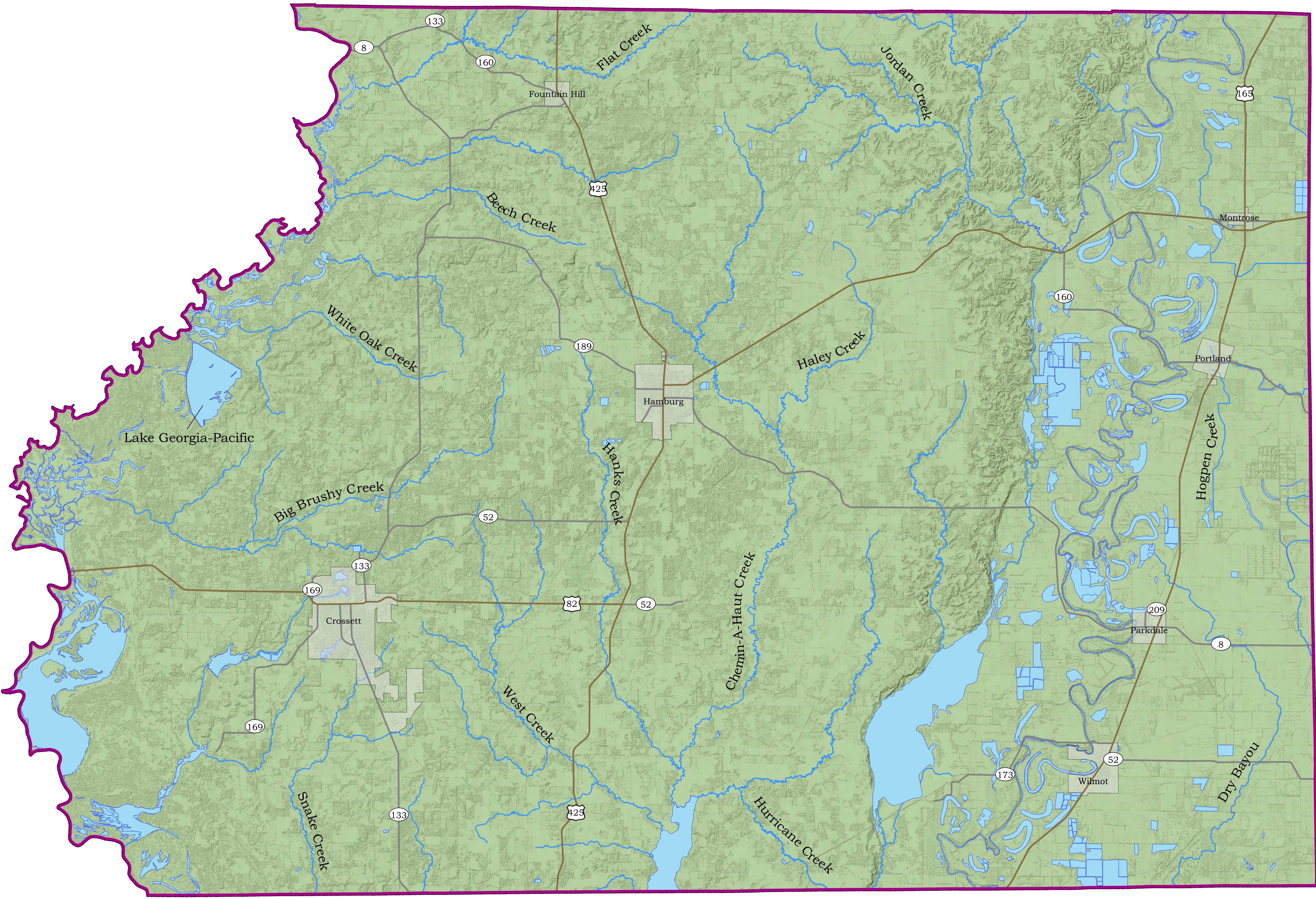




Ashley County Seismicity Map



Earthquake Magnitudes
No Events Recorded in This County

Symbols

- US Highways
- State Highways
- Incorporated Areas
- Water



Ashley County (shaded in blue) is located outside the New Madrid seismic zone (NMSZ) catastrophic planning area (shaded in pink), as designated by the Arkansas Department of Emergency Management (ADEM). The New Madrid seismic zone (NMSZ) is shaded in purple.

References

Center for Earthquake Research and Information (CERI) - New Madrid Earthquake Catalog: http://folkworm.ceri.memphis.edu/catalogs/html/cat_nm.html

Cox, R. T., 1991, Possible triggering of earthquakes by underground waste disposal in the El Dorado, Arkansas area: Seismological Research Letters, V. 62, N. 2, p.113-122.

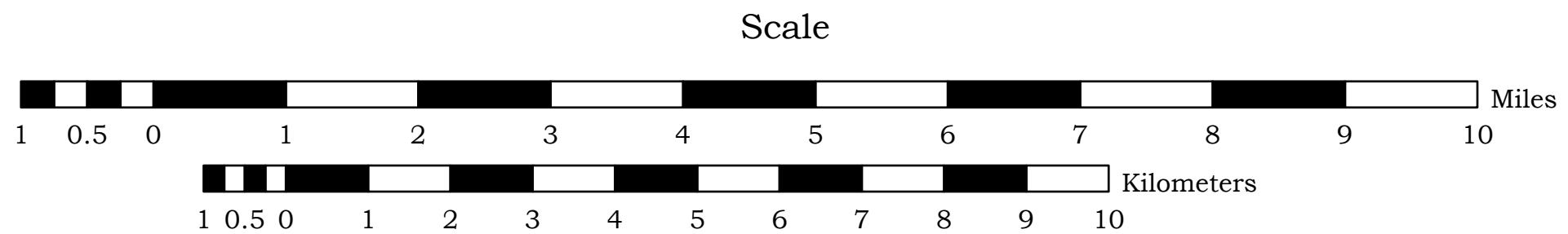
Cox, R.T., 2010, Holocene faulting and liquefaction along the southern margin of the North American craton (Alabama-Oklahoma transform): National Earthquake Hazard Reduction Program, Final Technical Report No. G09AP00015, U.S. Geological Survey, Reston, VA, 30 p.

The 1M Multidirectional Hillshade or Digital Slope Model base used in the making of this map was created by the Office of the State Geologist (OSG) using the 1meter Lidar data acquired from the United States Geological Survey (USGS).

Disclaimer

Although this map was compiled from digital data that was successfully processed on a computer system using ESRI Pro 3.x software at the Office of the State Geologist (OSG), no warranty, expressed or implied, is made by the OSG regarding the unity of the data on any other system, nor shall the act of distribution constitute any such warranty. The OSG does not guarantee this map or digital data to be free of errors or assume liability for interpretations from this map or digital data, or decisions based thereon.

The views and conclusions contained in this document are those of the authors and should not be interpreted as necessarily representing the official policies, either expressed or implied, of the Office of the State Geologist (OSG).



Scott M. Ausbrooks
David H. Johnston
2014

Revision Date:	Scale:	Digital Compilation:	Updated:
08 October 2024	1 : 75,000	Jerry W. Clark	