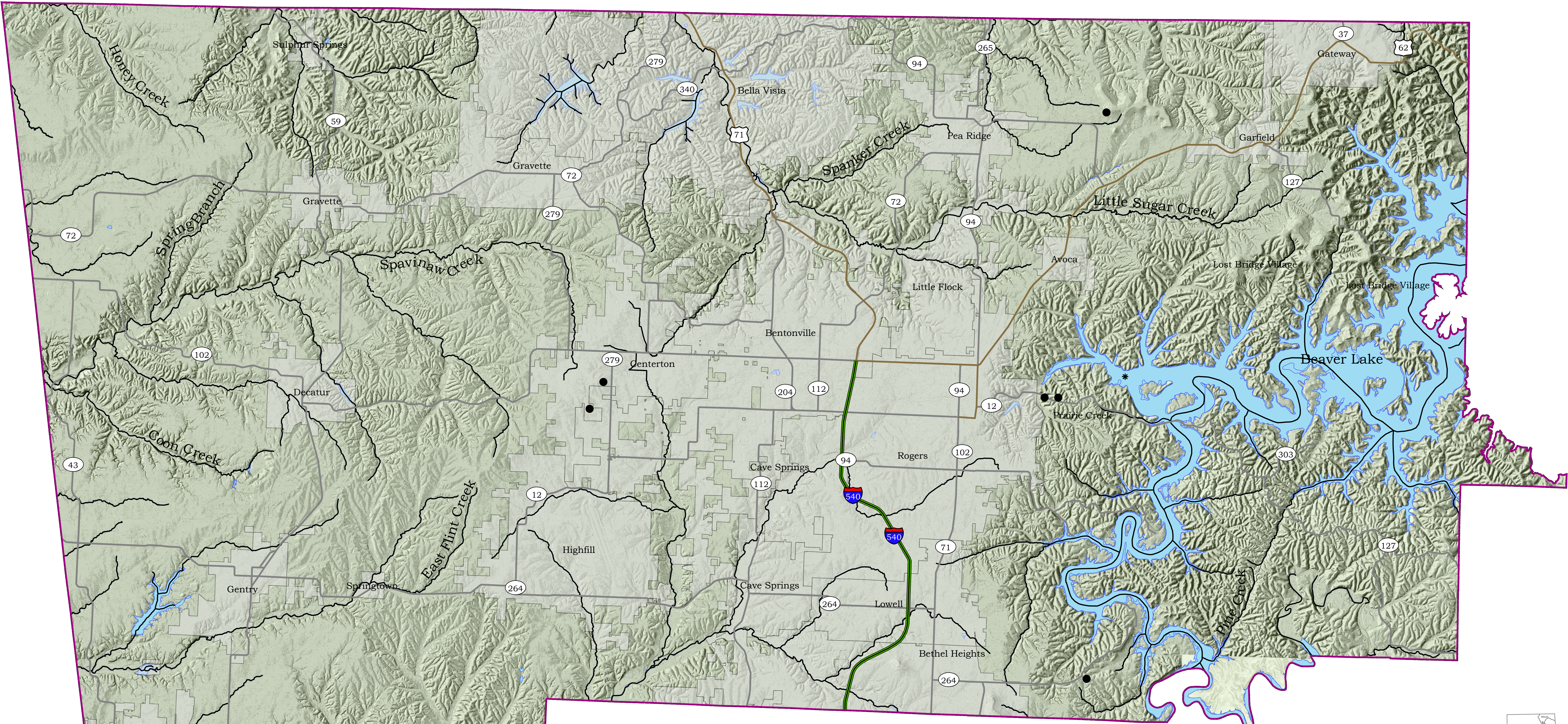




Benton County Seismicity Map



Earthquake Magnitudes

- * 1.00 - 1.90
- 1.91 - 2.90

Symbol

- Interstate Highways
- US Highways
- State Highways
- Incorporated Areas
- Water

About the Map

This map illustrates the location and magnitude of reported earthquakes that have occurred in Benton County, Arkansas from 2010 to 2024. The data source for the earthquakes depicted on this map is derived from the Office of the State Geologist (OSG) earthquake catalog. The catalog has been compiled from various sources and publications and includes date, time, latitude, longitude, magnitude or intensity and depth information. Some event records may contain incomplete data due to their date and/or source. The OSG earthquake catalog is dynamic and continually updated as event parameters are modified, new events are added, and occasionally, events are deleted.



Benton County (shaded in blue) is located outside the New Madrid seismic zone (NMSZ) catastrophic planning area (shaded in pink), as designated by the Arkansas Department of Emergency Management (ADEM). The NMSZ is shaded in purple.

References

Advanced National Seismic System (ANSS) earthquake database web page: URL: <http://earthquake.usgs.gov/monitoring/anss/>

Center for Earthquake Research and Information (CERI) - New Madrid Earthquake Catalog: URL: http://folk.worm.cerl.memphis.edu/catalogs/html/cat_nm.html

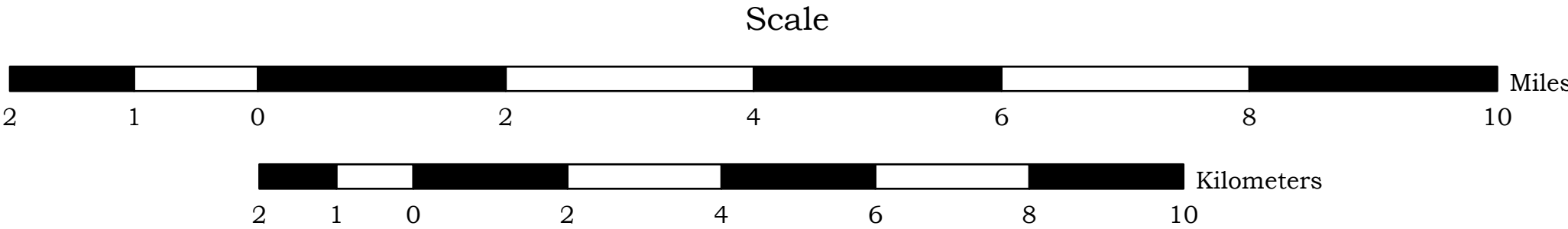
United States Geological Survey USGS) Earthquake Notification Service (ENS).

The 1M Multidirectional Hillshade or Digital Slope Model base used in the making of this map was created by the Office of the State Geologist (OSG) using the 1meter Lidar data acquired from the United States Geological Survey (USGS).

Disclaimer

Although this map was compiled from digital data that was successfully processed on a computer system using ESRI Pro 3.x software at the Office of the State Geologist (OSG), no warranty, expressed or implied, is made by the OSG regarding the unity of the data on any other system, nor shall the act of distribution constitute any such warranty. The OSG does not guarantee this map or digital data to be free of errors or assume liability for interpretations from this map or digital data, or decisions based thereon.

The views and conclusions contained in this document are those of the authors and should not be interpreted as necessarily representing the official policies, either expressed or implied, of the Office of the State Geologist (OSG).



Scott M. Ausbrooks
David H. Johnston
2014