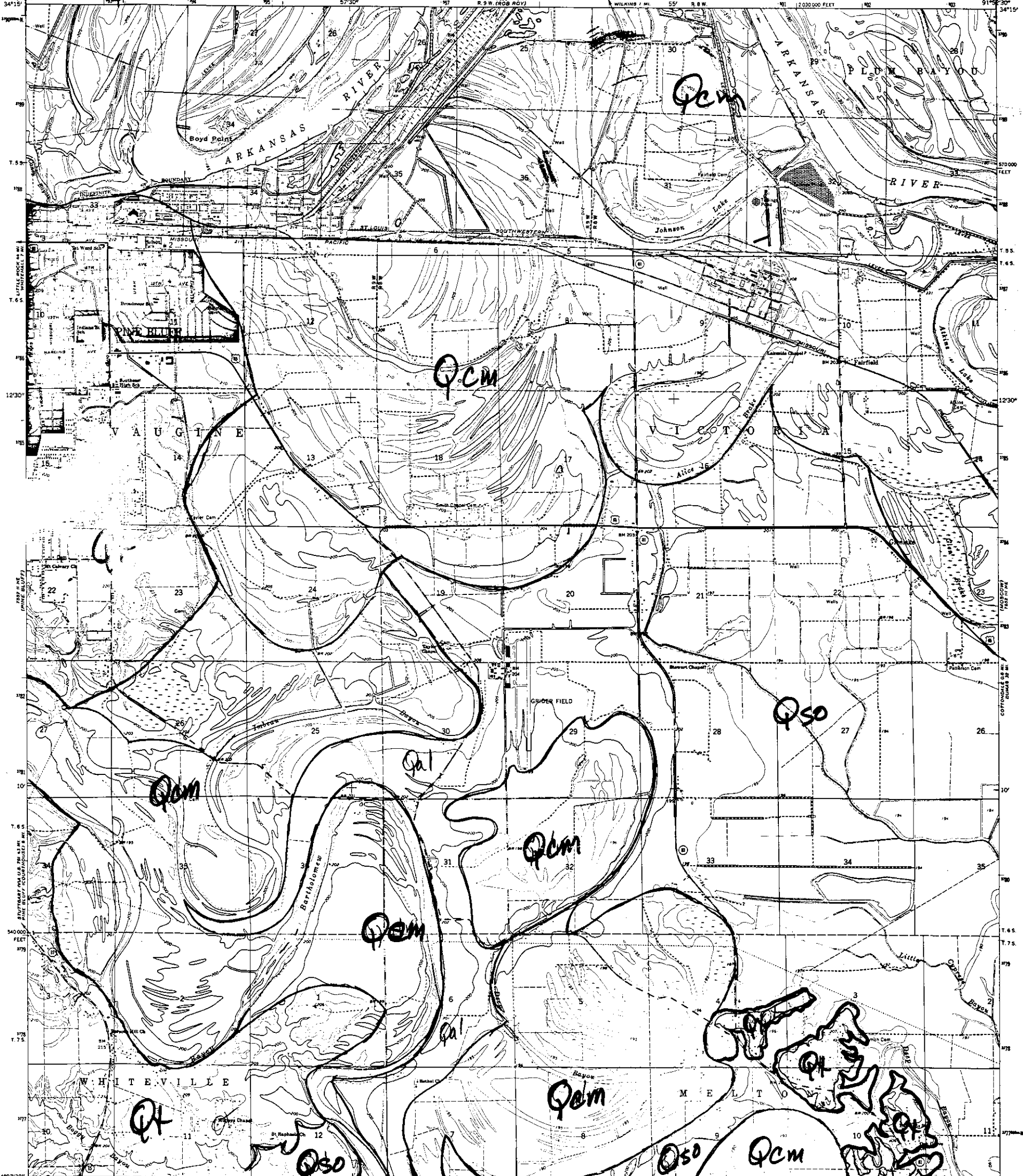


Reduce this line to

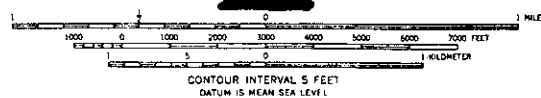
UNITED STATES
DEPARTMENT OF THE INTERIOR
GEOLOGICAL SURVEY

LADD QUADRANGLE
ARKANSAS—JEFFERSON CO.
7.5 MINUTE SERIES (TOPOGRAPHIC)
NW¼ MOBLE LAKE 15' QUADRANGLE



Mapped, edited, and published by the Geological Survey
Control by USGS, USC&GS, and Arkansas Geodetic Survey
Planimetry by photogrammetric methods from aerial photographs
taken 1962. Topography by planetable surveys 1964
Polyconic projection. 1927 North American datum
10,000-foot grid based on Arkansas coordinate system, south zone
1000-meter Universal Transverse Mercator grid ticks,
zone 15, shown in blue
Red tint indicates area in which only landmark buildings are shown
Fine red dashed lines indicate selected fence and field lines where
generally visible on aerial photographs. This information is unchecked

UTM GRID AND 1984 MAGNETIC NORTH
DECLINATION AT CENTER OF SHEET



CONTOUR INTERVAL 5 FEET
DATUM IS MEAN SEA LEVEL



CLASSIFICATION
Heavy-duty **Highway**
Medium-duty
U.S. Route
State Route

THIS MAP COMPILED WITH NATIONAL MAP ACCURACY STANDARDS
FOR SALE BY U. S. GEOLOGICAL SURVEY, DENVER 25, COLORADO OR WASHINGTON 25, D. C.
AND BY THE ARKANSAS GEOLOGICAL COMMISSION, LITTLE ROCK, ARKANSAS
A FOLDER DESCRIBING TOPOGRAPHIC MAPS AND SYMBOLS IS AVAILABLE ON REQUEST

LADD, ARK.
NW¼ MOBLE LAKE 15' QUADRANGLE
N3407.5-W9152.5/7.5
1964
AMS 7823 III NW—SERIES V884

MASTER COPY