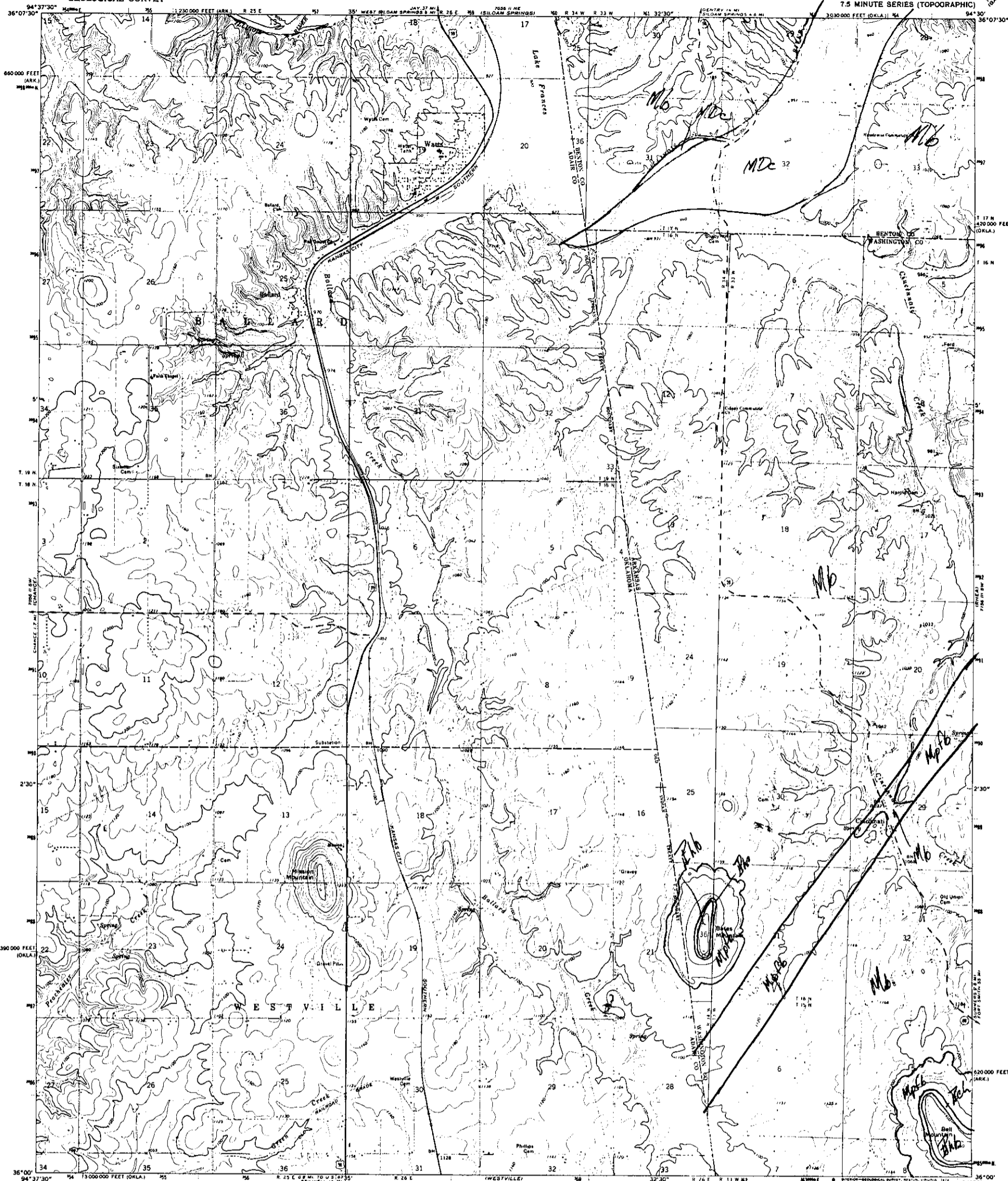
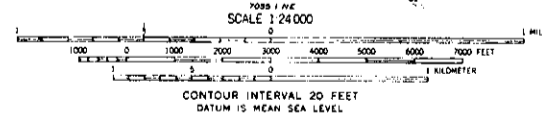


UNITED STATES
DEPARTMENT OF THE INTERIOR
GEOLOGICAL SURVEY

WATTS QUADRANGLE
OKLAHOMA-ARKANSAS
7.5 MINUTE SERIES (TOPOGRAPHIC)

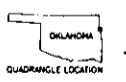


Mapped, edited, and published by the Geological Survey
Control by USGS and USC&GS
Topography by photogrammetric methods from aerial
photographs taken 1971. Field checked 1972
Projection: Oklahoma coordinate system, north zone
(Lambert conformal conic)
10,000-foot grid ticks based on Oklahoma coordinate
system, north zone and Arkansas coordinate system, north zone
1000-meter Universal Transverse Mercator grid ticks,
zone 15, shown in blue. 1927 North American datum
Fine red dashed lines indicate selected fence and field lines where
generally visible on aerial photographs. This information is unchecked



ROAD CLASSIFICATION
Primary highway, hard surface ——— Light duty road, hard or improved surface
Secondary highway, hard surface ——— Unimproved road
○ Interstate Route □ U.S. Route ○ State Route

THIS MAP COMPLIES WITH NATIONAL MAP ACCURACY STANDARDS
FOR SALE BY U.S. GEOLOGICAL SURVEY, DENVER, COLORADO 80225, OR RESTON, VIRGINIA 22092
OKLAHOMA GEOLOGICAL SURVEY, NORMAN, OKLAHOMA 73069,
AND ARKANSAS GEOLOGICAL COMMISSION, LITTLE ROCK, ARKANSAS 72201
A FOLDER DESCRIBING TOPOGRAPHIC MAPS AND SYMBOLS IS AVAILABLE ON REQUEST



Haley
Photogeology

WATTS, OKLA.-ARK.
N3600--W9430/7.5
1972
AMS 7056 II B2--SERIES V883

MASTER COPY