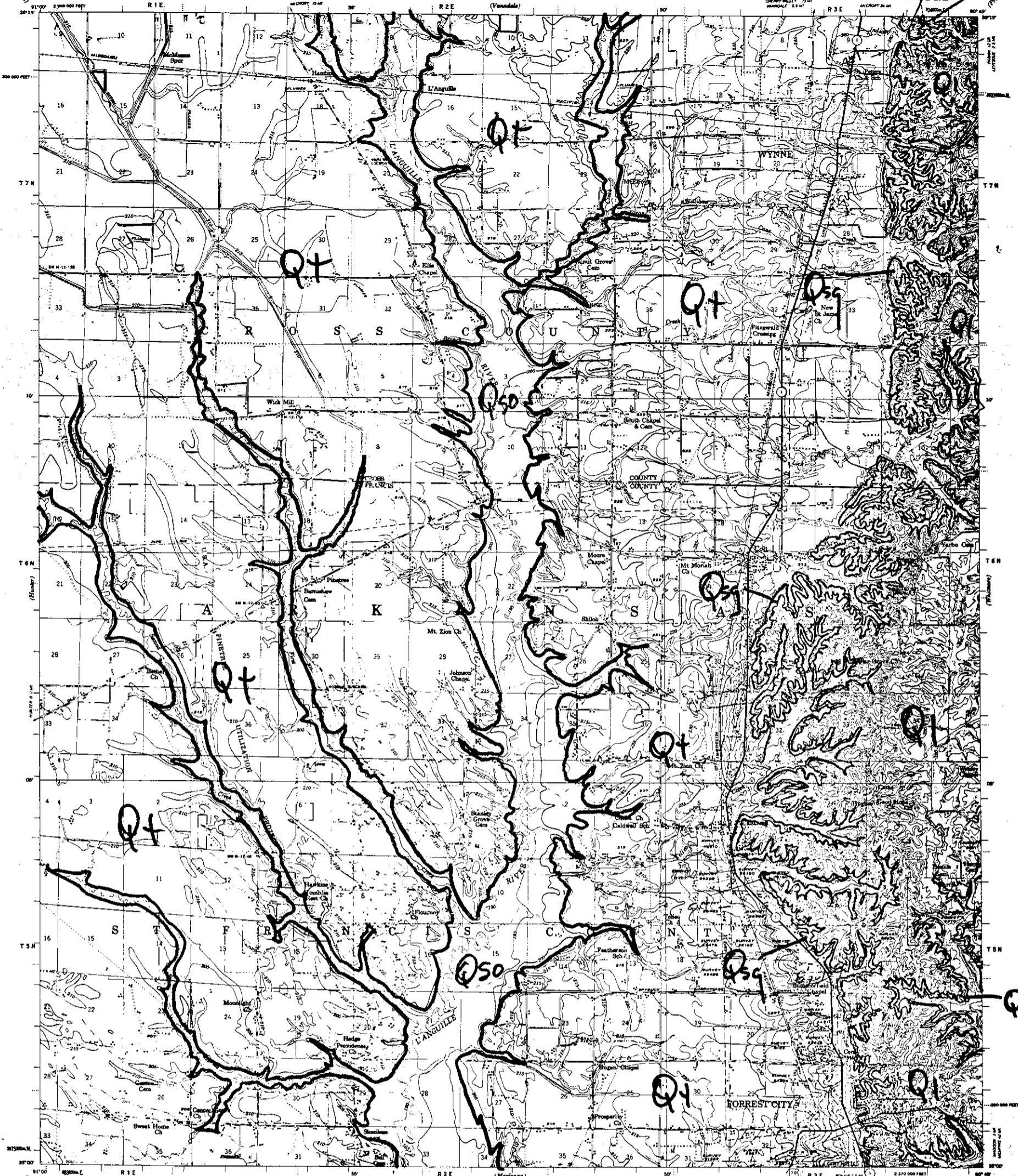


Carb ch
in gray



Prepared under the direction of the President, Mississippi River Commission by the U. S. Army Engineer District, Memphis, Corps of Engineers.
Edited and published by the Mississippi River Commission, Corps of Engineers, U. S. Army, Vicksburg, Mississippi.
Control by the U. S. Army Engineer District, Memphis, Corps of Engineers, and U. S. Coast and Geodetic Survey.
Polyconic Projection, 1927 North American Datum.
Descriptions, elevations and geodetic positions of permanent survey marks may be obtained from the U. S. Army Engineer District, Memphis, Corps of Engineers, Memphis, Tenn.
Topography by Kersh plotter and plane table surveys, 1957.
Aerial Photography, 1954, 1957. Planimetry and Topography field checked 1957.
Political boundaries are shown according to best available information.
Work under Flood Control Act shown as of Jan. 1958.
This map complies with national map accuracy standards.



Contour intervals 5 and 20 feet changing on the 200 foot contour
BATHY IS MEAN SEA LEVEL
ONE THOUSAND METER UNIVERSAL TRANSVERSE MERCATOR GRID, ZONE 18 IS INDICATED BY TICKS OPPOSITE OF THE MERIDIAN.
ARKANSAS STATE GRID ZONE NORTH IS INDICATED BY TICKS OUTSIDE THE MERIDIAN AT 10,000 FOOT INTERVALS

Additional copies may be procured from
The President, Mississippi River Commission
Corps of Engineers, U. S. Army
Vicksburg, Miss. 30 cents per copy

1" = 12.5 MILS
25 MILS
0" = 0 MILS
107 MILS

APPROXIMATE MEAN DECLINATION 1955
ANNUAL MAGNETIC CHANGE
1' WESTERLY

ROAD DATA 1957
In developed areas, only through roads are classified

Legend:
Level surface, heavy duty
Level surface, medium duty
Level surface, graded and drained, or surface level surface road
Improved dirt road or about
Unimproved dirt road or about
Ditch, watercourse, Federal, State

WYNNE, ARK.
EDITION OF 1958
N3500-W9045/18

MASTER COPY

7-5