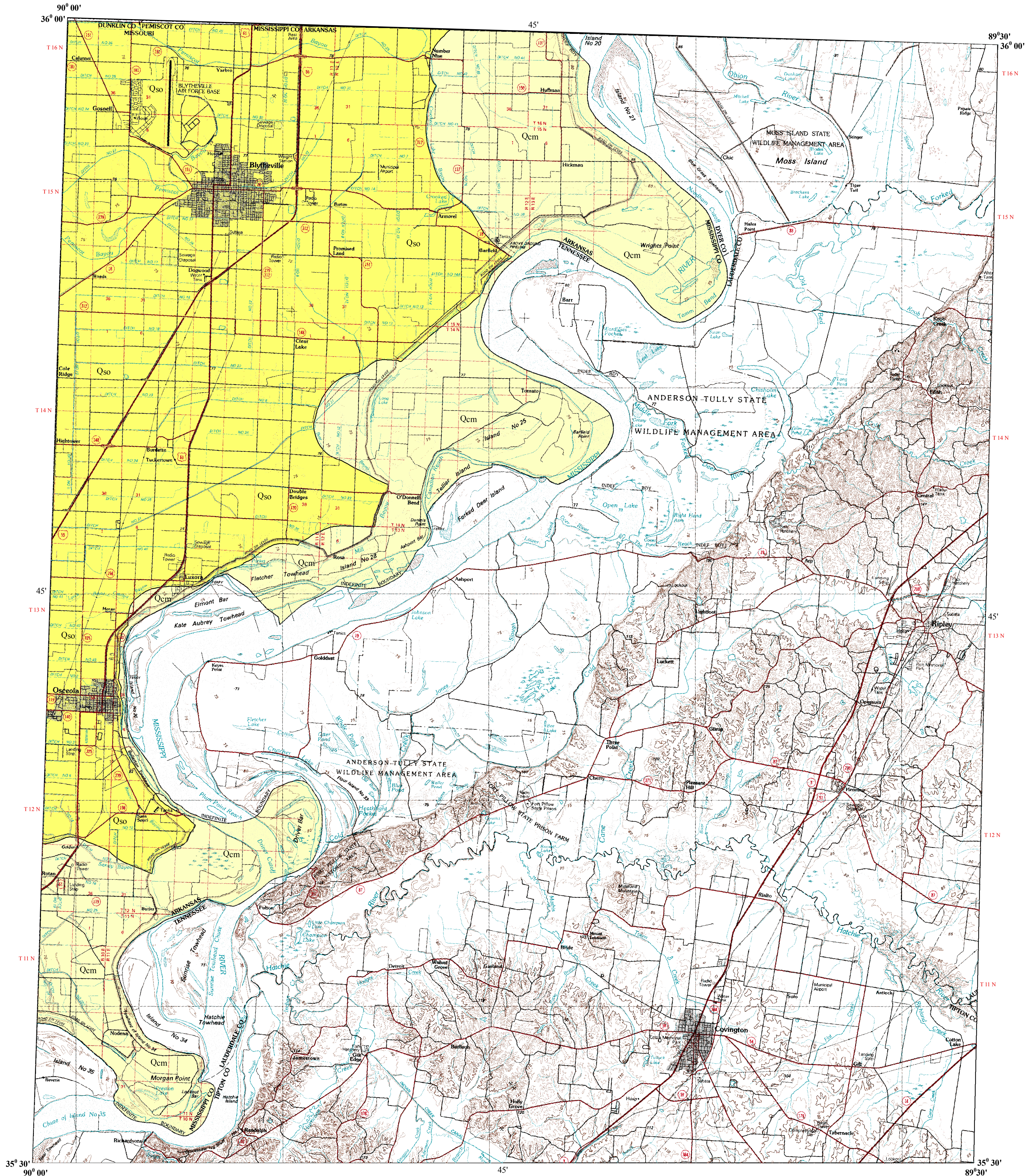
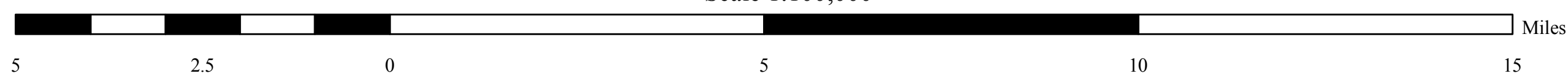


GEOLOGIC WORKSHEET OF THE ARKANSAS PORTION OF THE BLYTHEVILLE 1:100,000 QUADRANGLE, MISSISSIPPI COUNTY, ARKANSAS, DYER, LAUDERDALE AND TIPTON COUNTIES, TENNESSEE, DUNKLIN AND PEMSCOT COUNTIES, MISSOURI

Geology by Boyd R. Haley
 1969
 Geology modified by Scott M. Ausbrooks and William L. Prior
 2006
 Arkansas Geological Commission, Bekki White, State Geologist
 Digital compilation by Jerry W. Clark



Scale 1:100,000

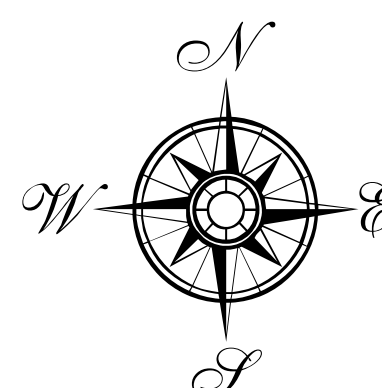


Description of Map Units

- Alluvium - Both units are equivalent in age
- Qcm** Alluvial deposits in major stream channels or in mappable meanders - Includes alluvial deposits in natural levees in some areas
 - Qso** Alluvial deposits of local stream or of overbank flow of major streams - In some areas includes deposits in abandoned meanders of major streams.

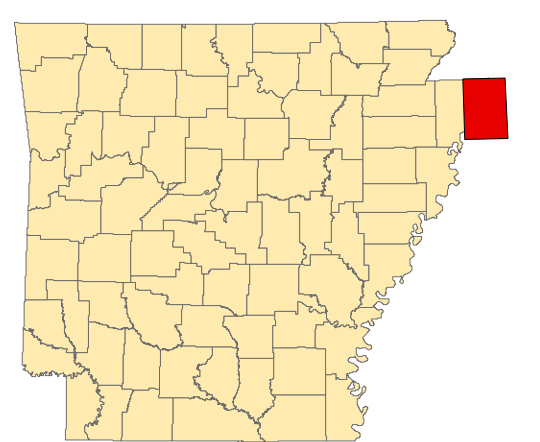
About the Map

The *Geologic Worksheet of the Arkansas Portion of the Blytheville 1:100,000 Quadrangle* is a compilation of the Armorer, Blytheville, Chic, Goldust, Luxora, Nodena, Open Lake, Osceola and Rosa 1:24,000 scale digital geologic worksheets. The original geology was scanned, digitized and transferred from the Blytheville, Hales Point and Osceola 1:62,500 scale geologic worksheets of Haley, B.R., 1969 and modified by Ausbrooks, S.M., and Prior, W.L., 2006. Copies of this map are available from the Arkansas Geological Commission, Little Rock, AR.



Disclaimer

Although this map was compiled from digital data that was successfully processed on a computer system using ArcGIS 9.x at the Arkansas Geological Survey (AGS), no warranty, expressed or implied, is made by AGS regarding the unity of the data on any other system, nor shall the act of distribution constitute any such warranty. AGS does not guarantee this map or digital data to be free of errors or liability for interpretations from this map or digital data, or decisions based thereon. The views and conclusions contained in this document are those of the authors and should not be interpreted as necessarily representing the official policies, either expressed or implied, of the Arkansas Geological Survey. The base used in the making of this map was created by Arkansas Geological Survey using USGS paper maps. The data is DRG62.5k (Digital Raster Graphics), 1:62,000 scale, USGS.



Arkansas

