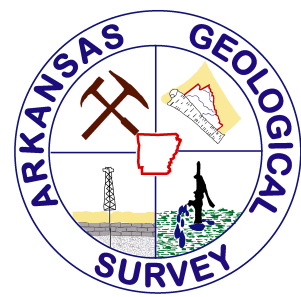
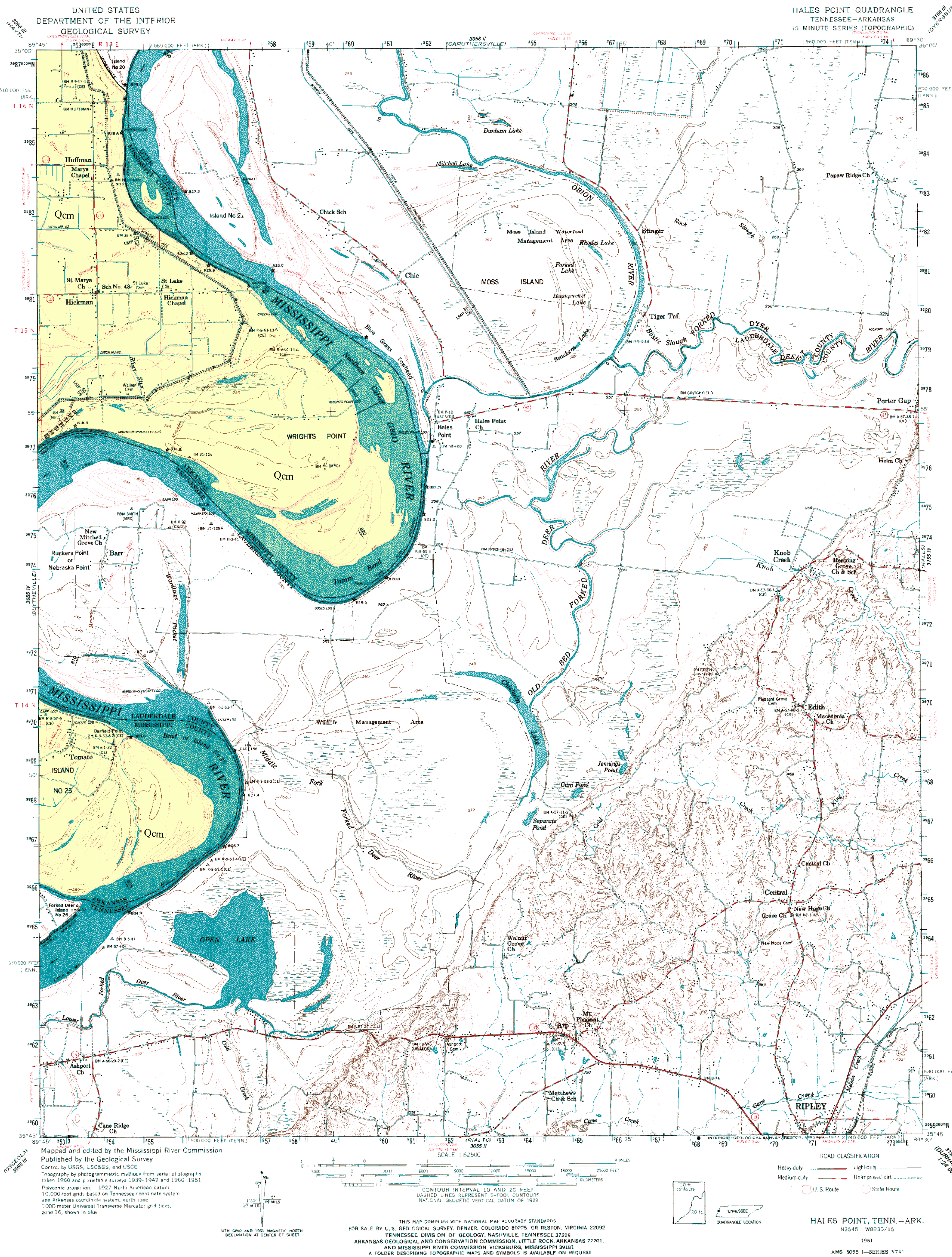


# GEOLOGIC WORKSHEET OF THE ARKANSAS PORTION OF THE HALES POINT 15-MINUTE QUADRANGLE MISSISSIPPI COUNTY, ARKANSAS



Geology by Boyd R. Haley  
1969  
Modified by Scott M. Ausbrooks and William L. Prior  
2008  
Digital compilation by Jerry W. Clark  
Arkansas Geological Survey, Bekki White, State Geologist



## About the Map

The *Geologic Worksheet of the Arkansas Portion of the Hales Point Quadrangle* is a 1:62,500 scale digital geologic worksheet. The original geology was scanned, digitized and transferred from the Hales Point 1:62,500 scale geologic worksheet of Haley, B.R., 1969 and modified by Ausbrooks, S.M., and Prior, W.L., 2008. Copies of this map are available from the Arkansas Geological Survey, Little Rock, AR.

## Description Of Map Units

**Qcm** The Quaternary Age (Holocene) *Channel Meander Alluvium* are alluvial sediments derived from typically older alluvial deposits that have been more recently reworked by channel meanders and include flood plain deposits of significant streams. Sediments will typically include unconsolidated gravels, sands, silts, clays and varying mixtures of any and all of these. The division of this unit from other Holocene alluvial sediments is based primarily on geomorphic considerations (presence of meander scars, point bars, and abandon channels) than lithology or age. Fossils are rare and the thickness is variable.

## References

- Haley, B. R., 1969, *Geologic Worksheet of the Hales Point Quadrangle*, Arkansas Geological Commission: Open-File Report, scale 1:62,500.
- McFarland, J. D., 2004, *Stratigraphic Summary of Arkansas*: Arkansas Geological Commission Information Circular 36, 39p.

## Disclaimer

Although this map was compiled from digital data that was successfully processed on a computer system using ArcGIS 9.x at the Arkansas Geological Survey (AGS), no warranty, expressed or implied, is made by AGS regarding the unity of the data on any other system, nor shall the act of distribution constitute any such warranty. AGS does not guarantee this map or digital data to be free of errors or liability for interpretations from this map or digital data, or decisions based thereon. The views and conclusions contained in this document are those of the authors and should not be interpreted as necessarily representing the official policies, either expressed or implied, of the Arkansas Geological Survey. The base used in the making of this map was created by Arkansas Geological Survey using USGS paper maps. The data is DRG62.5K (Digital Raster Graphics), 1:62,000 scale, USGS.