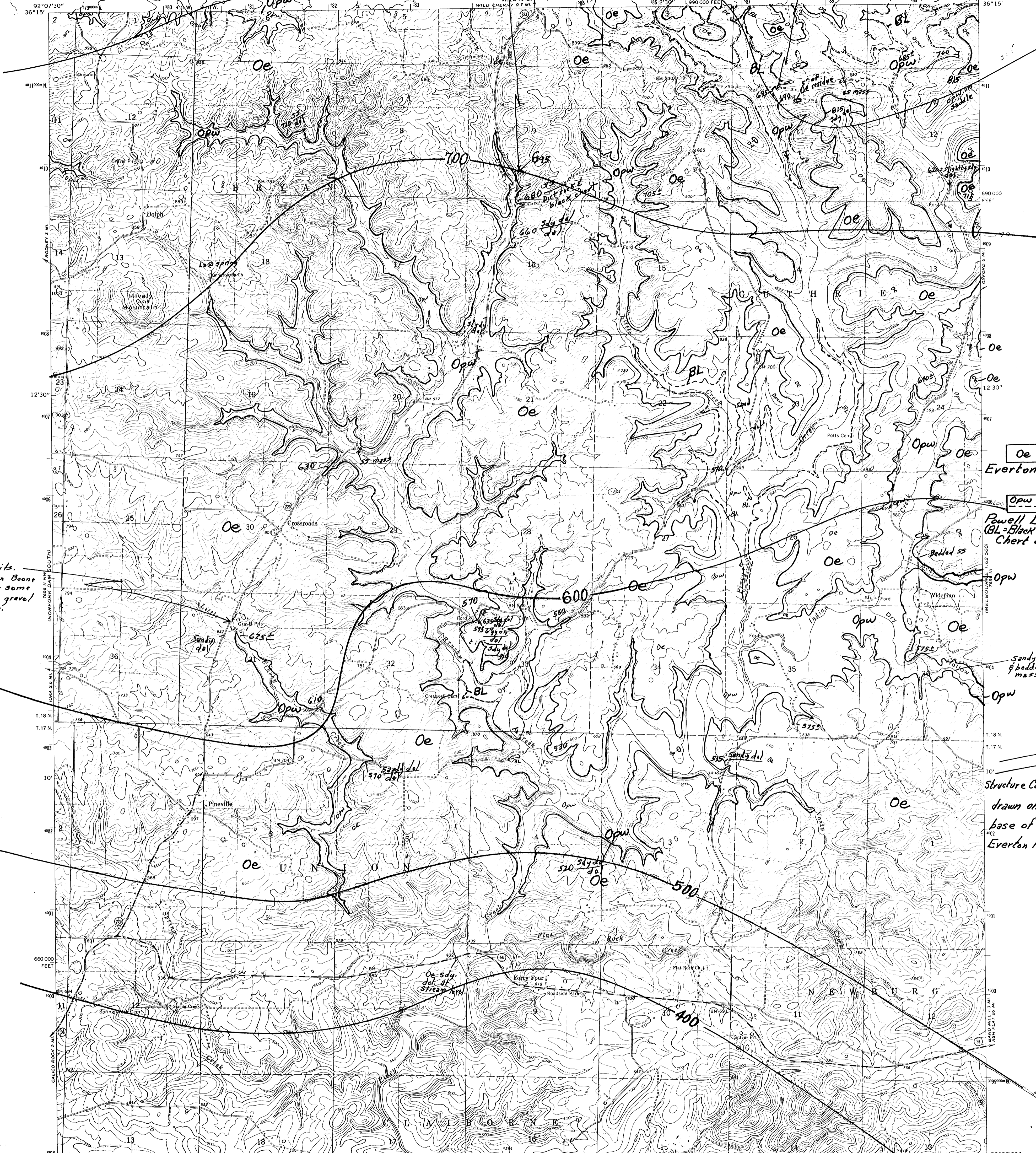


*quarry; 10' laminated & x-laminated w/ dol silt dol - not sandy  
lower 4 inches sandy & slightly conglomeratic  
3' weathered dolomite - pellets or dol pebbles  
1 inch calc. white to light grey chert  
10' med. to med. thin dol, laminated Co x-laminated  
clayey dol*

*Source of Black Ledge used on  
Major's Grov.  
by Wild Cherry*



*large pits.  
let-down Boone  
chert - some  
rounded gravel  
on top.*

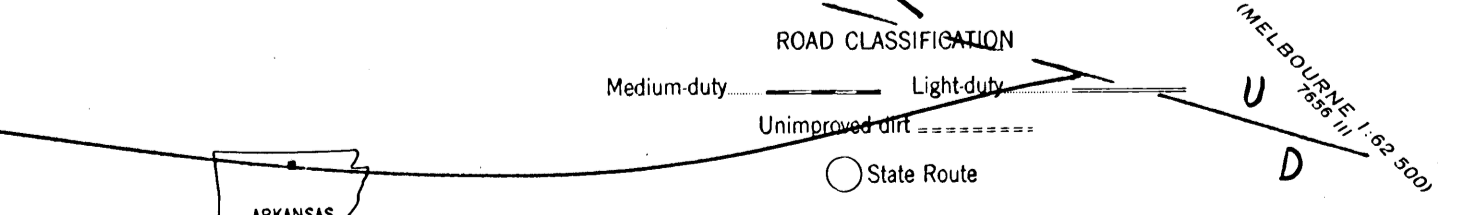
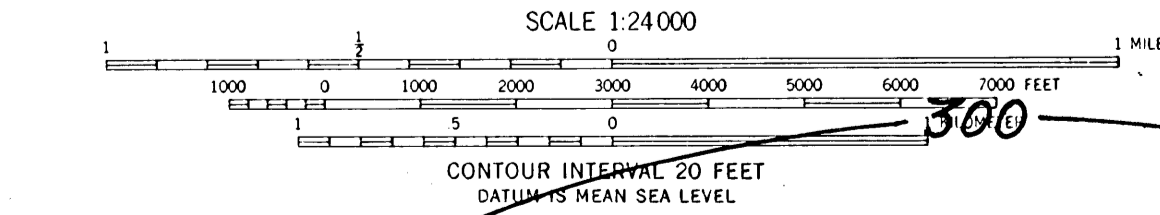
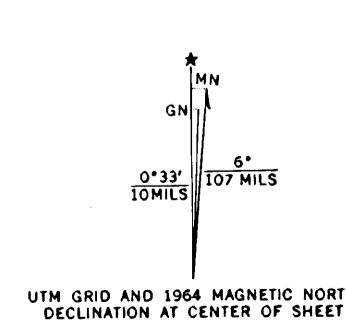
**Oe**  
Everton Fm.

**Opw** **BL**  
Powell Dol.  
(BL = Black Ledge  
Chert bed)

*Sandy alluvium  
bedded ss  
masses*

*Structure Contours  
drawn on the  
base of the  
Everton Formation*

Mapped, edited, and published by the Geological Survey  
Control by USGS, USC&GS, and USCE  
Topography by photogrammetric methods from aerial  
photographs taken 1959. Field checked 1964  
Polyconic projection. 1927 North American datum  
10,000-foot grid based on Arkansas coordinate system,  
north zone  
1000-meter Universal Transverse Mercator grid ticks,  
zone 15, shown in blue  
Fine red dashed lines indicate selected fence and field lines where  
generally visible on aerial photographs. This information is unchecked



**RECONNAISSANCE GEOLOGIC MAP OF THE PINEVILLE QUADRANGLE, ARKANSAS**

Compiled from field observations and subsurface data by Ernest E. Glick, U. S. Geological Survey, in cooperation  
with the Arkansas Geological Commission. This map was compiled during the preparation of the Geologic Map  
of Arkansas, 1978; it may be revised extensively when new data become available.

**E.E. GLICK, 1971**  
PINEVILLE, ARK.  
N3607.5-W92007.5