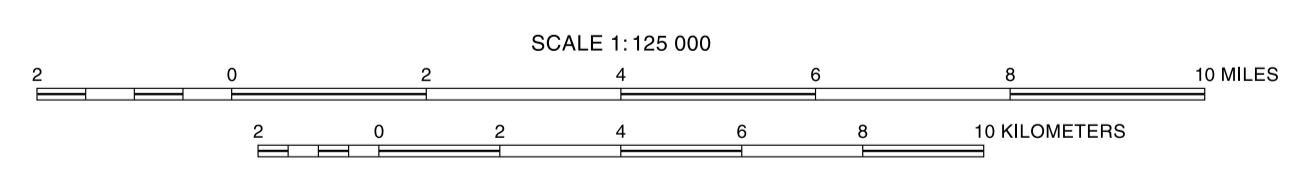
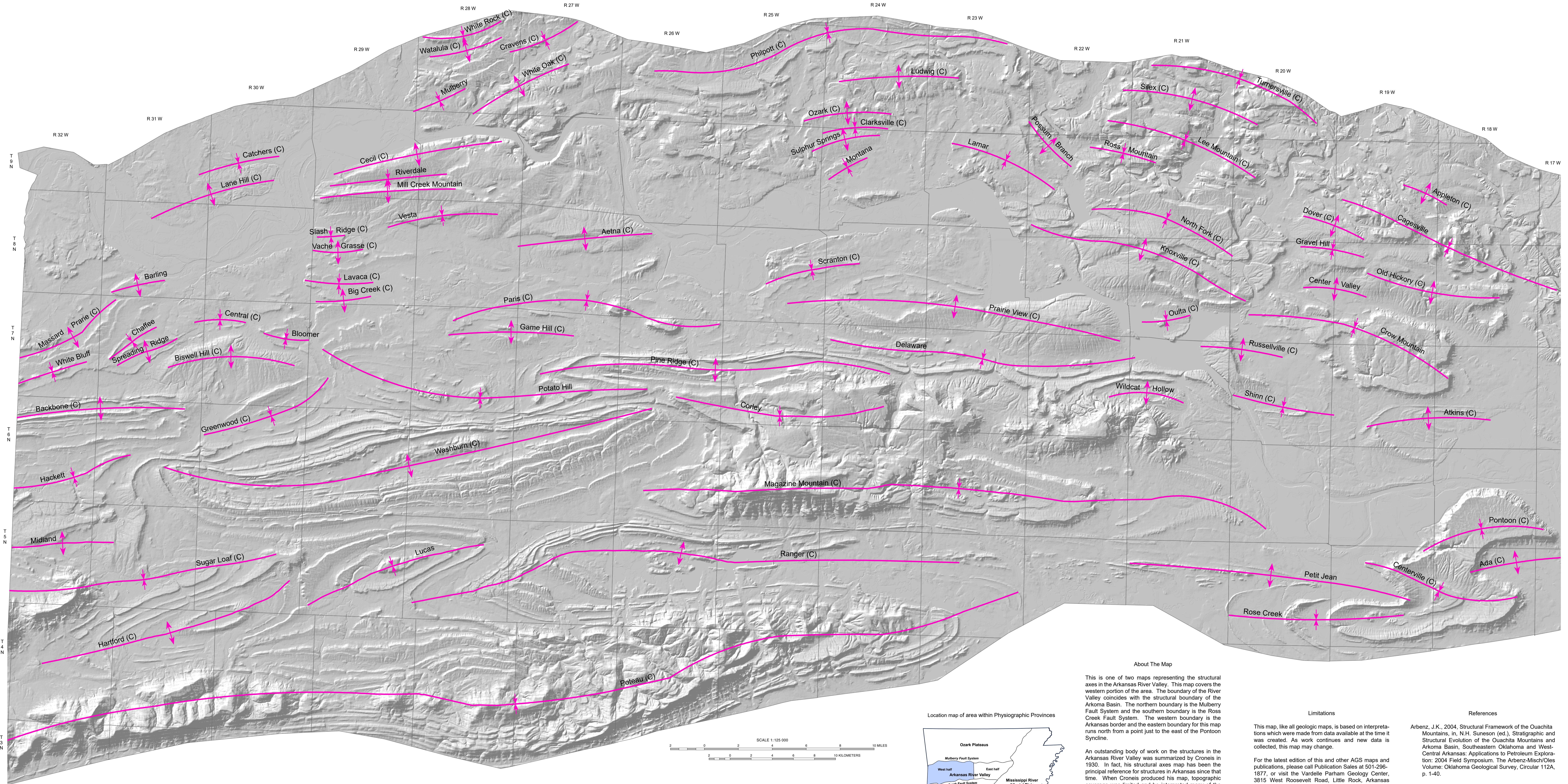


Structural Axes of the Western Arkansas River Valley

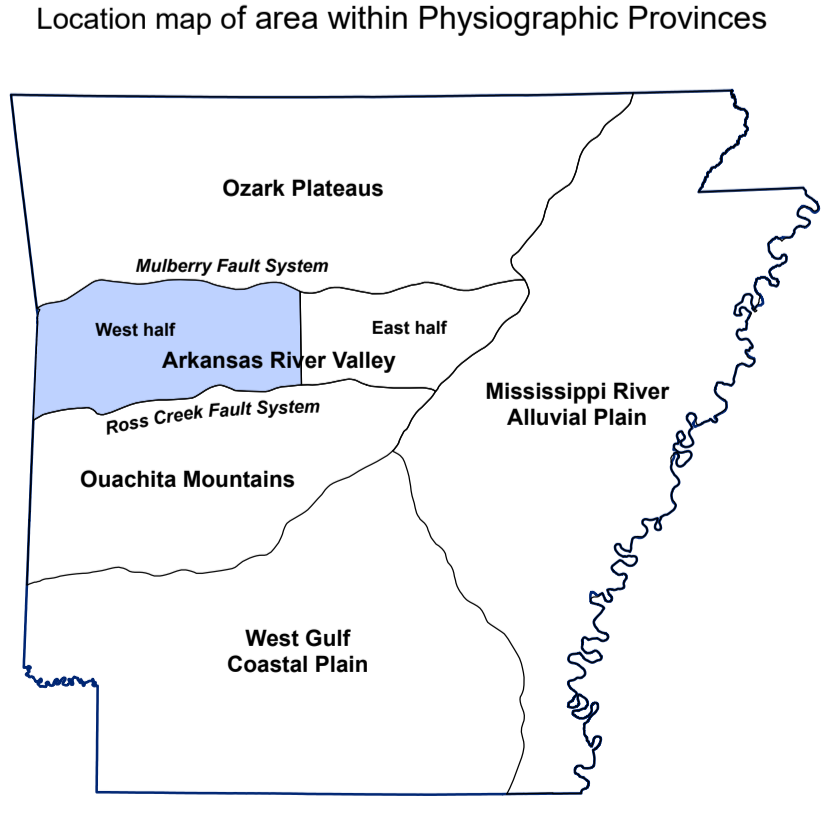
Corbin G. Cannon II and Angela K. Chandler
2016



Symbols

Ada (C) from Croneis Anticline

Corley Syncline



About The Map

This is one of two maps representing the structural axes in the Arkansas River Valley. This map covers the western portion of the area. The boundary of the River Valley coincides with the structural boundary of the Arkoma Basin. The northern boundary is the Mulberry Fault System and the southern boundary is the Ross Creek Fault System. The western boundary is the Arkansas border and the eastern boundary for this map runs north from a point just to the east of the Pontoon Syncline.

An outstanding body of work on the structures in the Arkansas River Valley was summarized by Croneis in 1930. In fact, his structural axes map has been the principal reference for structures in Arkansas since that time. When Croneis produced his map, topographic coverage was limited and he interpreted many of the structures to extend for tens and some over a hundred miles. Using modern hillshade and large-scale topographic maps, it can be now be determined that many of these structures can be shortened. Axial traces were compared to Croneis and named accordingly. These structures appear with a (C) after the structure name. This map also incorporates interpretations by Haley (1993) and Arbenz (2004), and their naming schemes were also used where applicable. Previously unknown structures were named for local geographic features. Structures were field checked when their trace was unclear from the map references.

Limitations

This map, like all geologic maps, is based on interpretations which were made from data available at the time it was created. As work continues and new data is collected, this map may change.

For the latest edition of this and other AGS maps and publications, please call Publication Sales at 501-296-1877, or visit the Vardelle Parham Geology Center, 3815 West Roosevelt Road, Little Rock, Arkansas 72204. This map is also available on our website in Portable Document Format at:

http://www.geology.ar.gov/geologic_maps/dgm-rvsm.htm

Suggested citation for this map:

Cannon II, C. G. and Chandler, A. K., 2016, Structural Axes of the Western Arkansas River Valley. Arkansas Geological Survey, Digital Geologic Map, DGM-RVSM-W, 1 sheet, 1:125,000

References

Arbenz, J.K., 2004, Structural Framework of the Ouachita Mountains, in: N.H. Suneson (ed.), Stratigraphic and Structural Evolution of the Ouachita Mountains and Arkoma Basin, Southeastern Oklahoma and West-Central Arkansas: Applications to Petroleum Exploration: 2004 Field Symposium. The Arbenz-Misch/Oles Volume: Oklahoma Geological Survey, Circular 112A, p. 1-40.

Croneis, C., 1930, Geology of the Arkansas Paleozoic Area with Especial Reference to Oil and Gas Possibilities, Arkansas Geological Survey, Bulletin 3, 475p., 2 plates.

Haley, B. R., et al. 1993, Geologic Map of Arkansas: Arkansas Geological Commission Open File Report, scale 1:500,000.

Arkansas GIS Office, 2007, 2006 Five Meter Resolution Hillshade Model (Raster), Geosoft
<https://gis.arkansas.gov/product/2006-five-meter-resolution-hillshade-model-raster/>