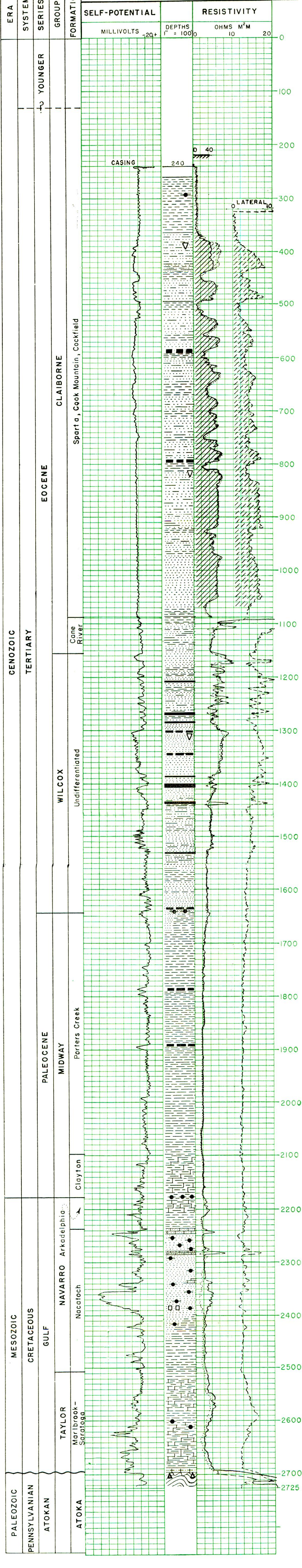


ARKANSAS RESOURCES AND DEVELOPMENT COMMISSION
 DIVISION OF GEOLOGY
 Harold B. Foxhall Director

443-447 State Capitol
 Little Rock, Arkansas
 1948

State of Arkansas	COMPANY Petroleum Products Company
County of St Francis	LEASE Engler (Caples)
	LOCATION IN SECTION SE-SE-SE
	TOTAL DEPTH - 2725 Feet
	COMMENCED June 1947
	COMPLETED August 24, 1947
D.F. Elevation 209RT	ELECTRIC LOG By SCHLUMBERGER
Production D & A.	GEOLOGY By C.A. Renfroe
	DRAWN By Albert J. Hess



—EXPLANATION—

- | | | | |
|--|--------------------|--|--------------------|
| | SANDSTONE | | LIGNITE |
| | SHALE | | SIDERITE |
| | SANDY SHALE | | PYRITE |
| | LIMESTONE OR CHALK | | GLAUCONITE |
| | SANDY LIMESTONE | | PHOSPHATIC NODULES |
| | LIMY SHALE | | CHERT (reworked) |
| | QUARTZITE | | |