

Mar. 14, 1961

B. R. Haby
T. A. Hendricks

Midwest well on backbone anticline
is 0.1 mi. N. of road 1.2 mi. west of
Cox's corner, Okla.

Barber quadrangle just
east of Huntington along county road
Two pictures were taken No. 4 + 5

No 4 was long range shot of
Atoka-Hartshorne contact. Hartshorne
is about 35' thick, lower lower
bed shown in picture is about
8' thick. Forset beds show
current from $S75^{\circ}E$

No 5 was close-up of contact between
Atoka-Hartshorne. Hartshorne bed shown
is about 2' thick. Spaly pebbles
in Hartshorne about $1/2$ " diameter
Forset beds up to 2" thick and
show current from $S75^{\circ}E$
Atoka is shale and the contact
is sharp.

Kodak Tri X

Photographs

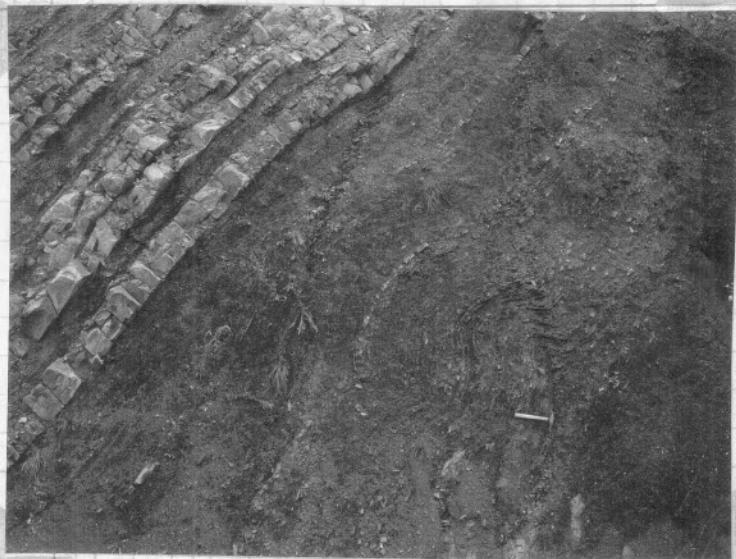
- #1 Blank
- #2 Hartshorne Atoka contact
west side of road north
of Hackett
- #3 bedding flow features
in basal Sandstone on
south side of Midland
Peak
- #4+5 Fault plane dipping north
Hartshorne sandstone
to the south of highway
from Cecil to Sabaccal
- #6+7 long shot of cross bedding
in Hartshorne quarry
near Meards Rock N
8. Close up of cross bedding
in the Hartshorne
quarry
- 9+10 Backbone fault zone
on east side of highway
H on west side of highway
pick on same fault line

Anasco Panero

- 1 Head on shot of McAhester fault on huerfano Moors rock road
- 2 Oblique shot of same fault pick up on fault
- 3-4-5 Pimples with Sassafras trees - trees about 20' tall.



Close-up of folded shale in
sec. 25, T. 24N, R. 25E, Okla.



Folded shale in lower Jackfork?
upper Stanley sec. 25, T. 6N., R. 25E.
Oklahoma



Atoka - Harts horned contact
SE NW sec. 30, T. 5N., R. 30W.
Barber quadrangle



Atoka - Harts home contact
Forset to the west
SE NW sec, 30, T. 5N. R. 30 W,
Barber quadrangle



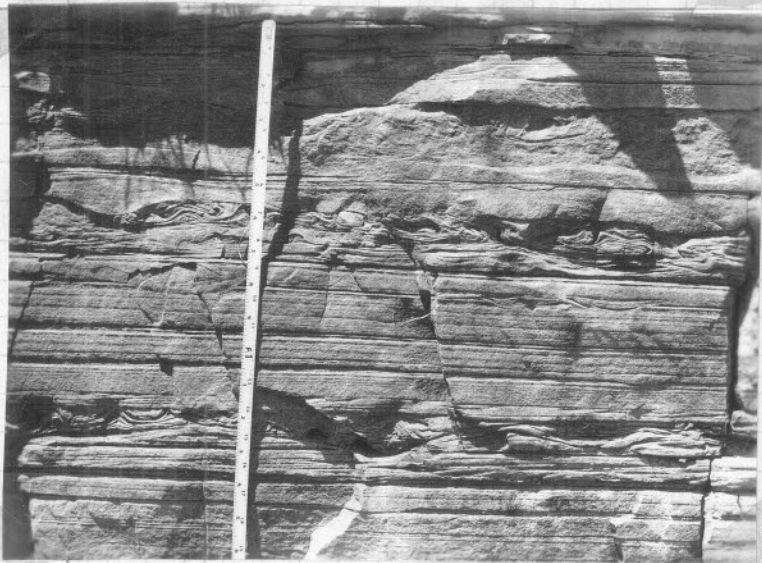
Cross section of a prehistoric mound
either sec 7. T. 8N., R. 28W. or
sec 12. T. 8N., R. 29W.
Kanawha quadrangle



Rollid sandstone in Staudly?
Johns Valley & Lower Atoka?
Sec. 5, T. 1 N., R. 25 W.



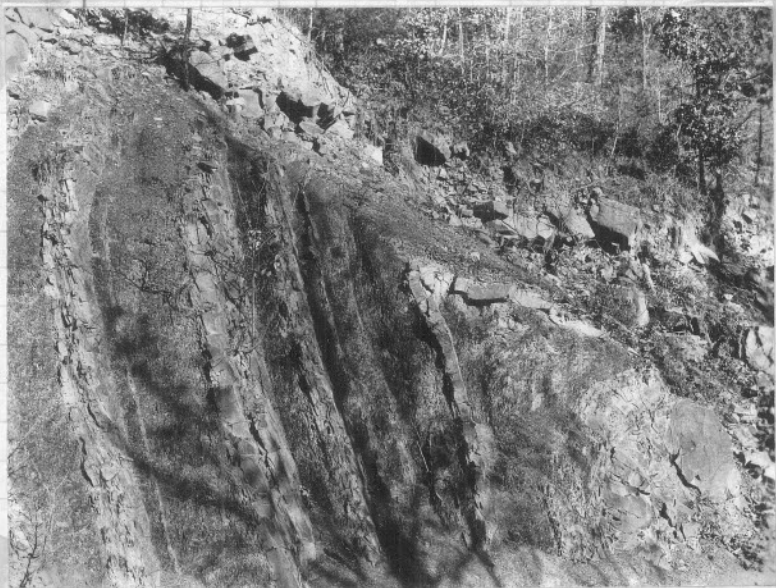
Close-up of rolled sandstone
(upper boulder) of previous
picture sec. 5, T. 11N., R. 25W.



Slump features in basal Gowanna
formation NW sec. 2, T.4N., R. 32W.
Greenwood quadrangle



Overturnd lower Alaska flysch
rock Chula road (overturnd)
fences show current from
east, folds by picks show
slumping & sediments to the
south sec. 8, T. 2N., R. 24W.



Folding and faulting of lower
Atoka Gypsum-rocked Chula road
sec. 8, 2N, 24W Arkansas



Folding and faulting of lower Dakota
flysch block, Cheate Road
Sec. 8, 2N, 24W. Ark

















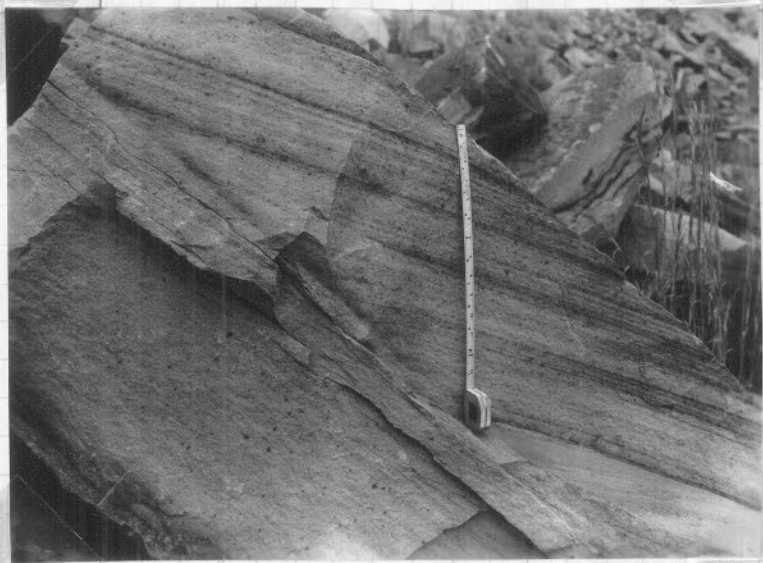




Forsyth bedding in
Hartshorne sandstone
S E NE sec. 6, T. 8N., R. 29W
Lanucea quadrangle



Forset bedding in
Hartshorne sandstone
SE NE sec 6 T. 8N. R. 29W
Print is reversed
Suwasa quadrangle



Forset bedding in Hartshorne
sandstone block is upside
down laminae or red or
reddish-purple or purple.
SENE sec. 6 T. 8N. R. 29W.
Lavaca quadrangle



Thrust faults west side
of Pekapasas 45 sec 4, T. 7N, R. 32W
Greenwood quadrangle



thrust faults east side
of Arkansas 45
sec. 4, T. 7N, R. 32W.
Greenwood quadrangle



thrust faults east side
of Arkansas 45
sec. 4 T. 7N, R. 32W.
Greenwood quackrange











