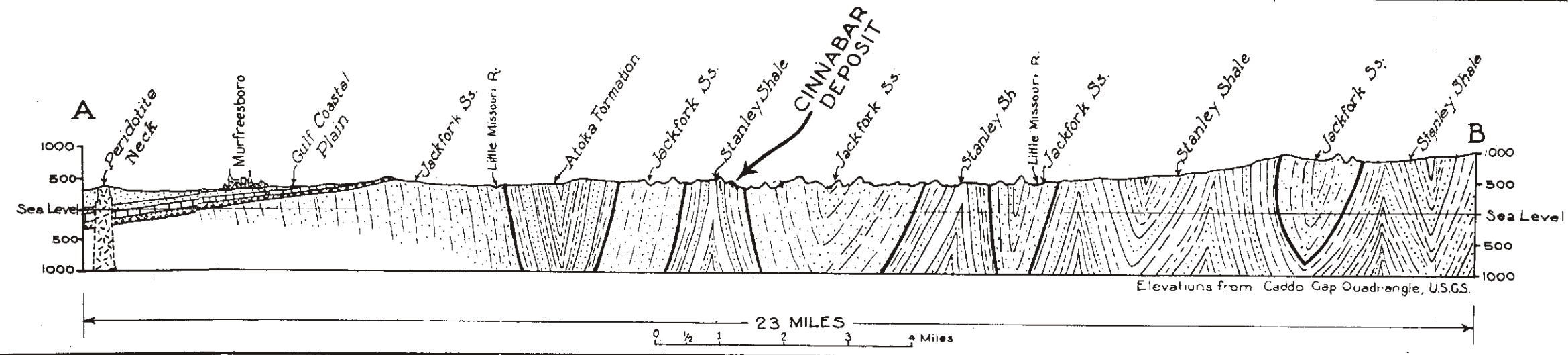


**LEGEND**

- Gulf Coastal Plain (Quaternary, Tertiary, Cretaceous, Pennsylvanian)
- Atoka Formation (Mississippian)
- Jackfork Sandstone (Mississippian)
- Stanley Shale (Mississippian)
- Peridotite Neck (Igneous)
- Area Containing Cinnabar Deposits
- Anticlinal Axes
- Synclinal Axes



Note: Geology According to U.S. Geological Sur. Bulletin 808, 1929 and Geological Map of Arkansas; Arkansas Geological Survey 1929.

PLATE 4. MAP AND SECTION SHOWING GEOLOGY OF SOUTHERN PORTION OF THE ATHENS PLATEAU.