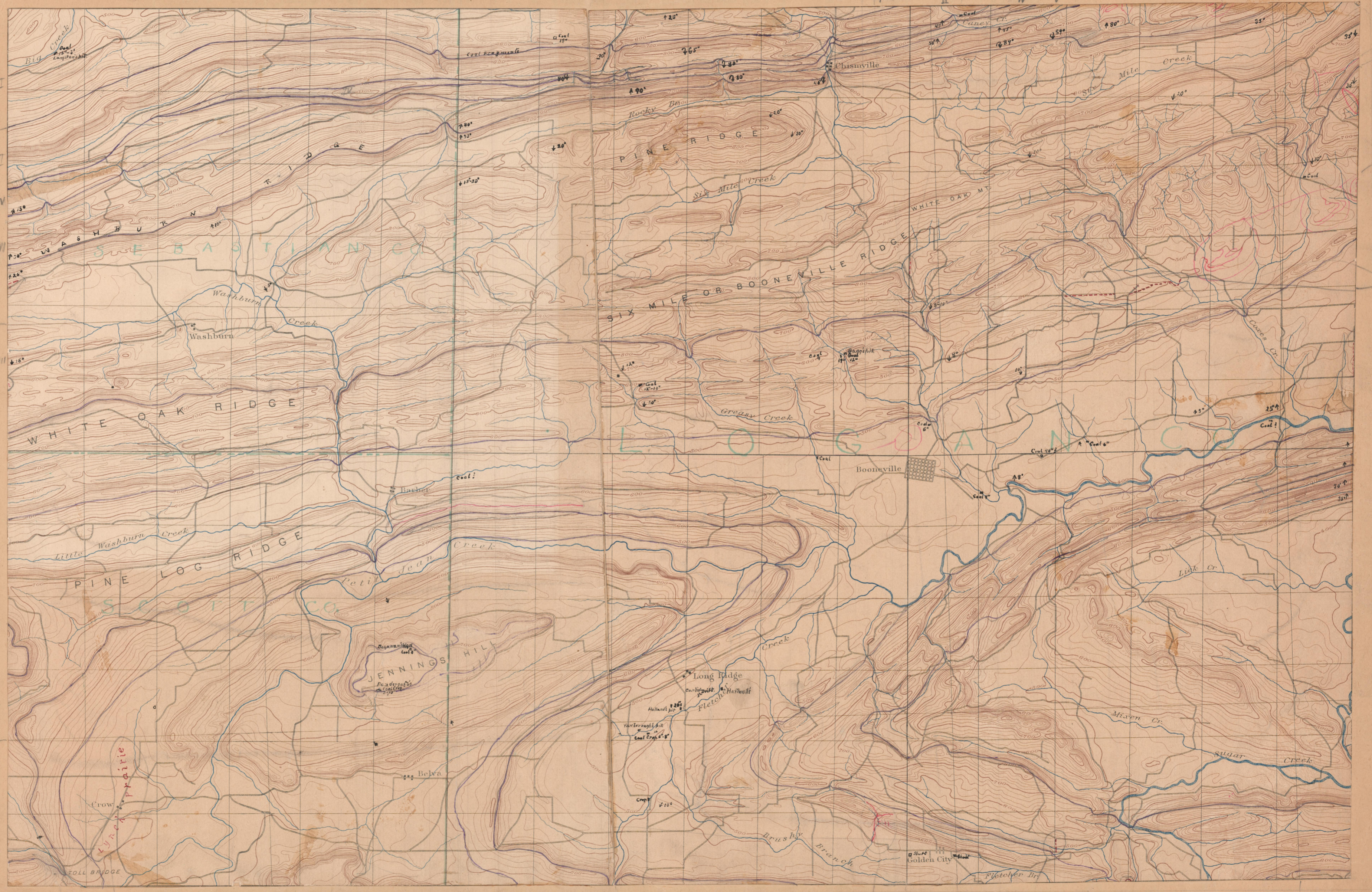


*Geological Survey of Arkansas - John C. Branner, State Geologist
 Coal Region Geologic and Topographic Map
 Surveyed in 1889*

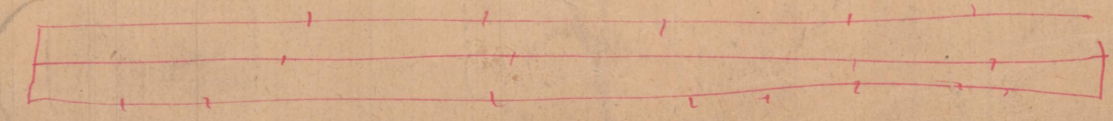
*Corps
 Arthur W. Simons, Asst. Geologist in Charge
 H. S. Williams, Assistant
 J. H. Means*

Boonville Sheet



*horizontal
 Purple lines
 are to be put
 in in fine black
 dots*

Scale about 1 inch = 1 mile - $\frac{1}{62,250}$ of Nature



*Names of pits to
 be added*

*Scale similar
 to connection
 sheet*

Credited Notes

*Change
 Sheet*