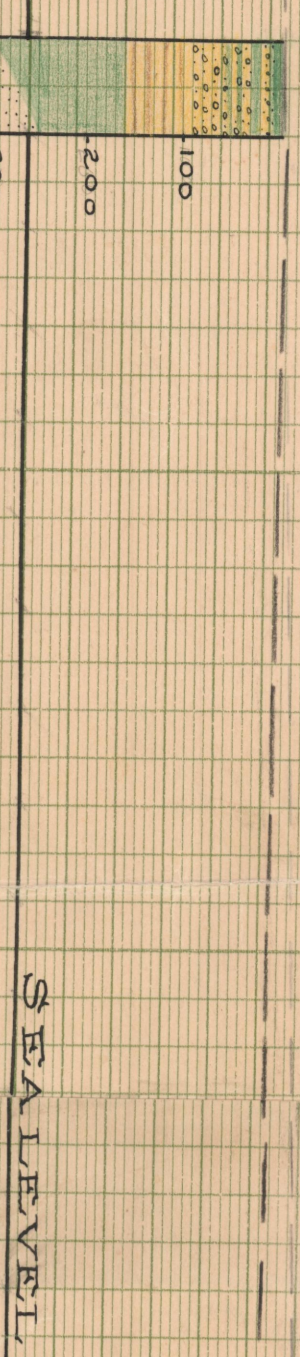
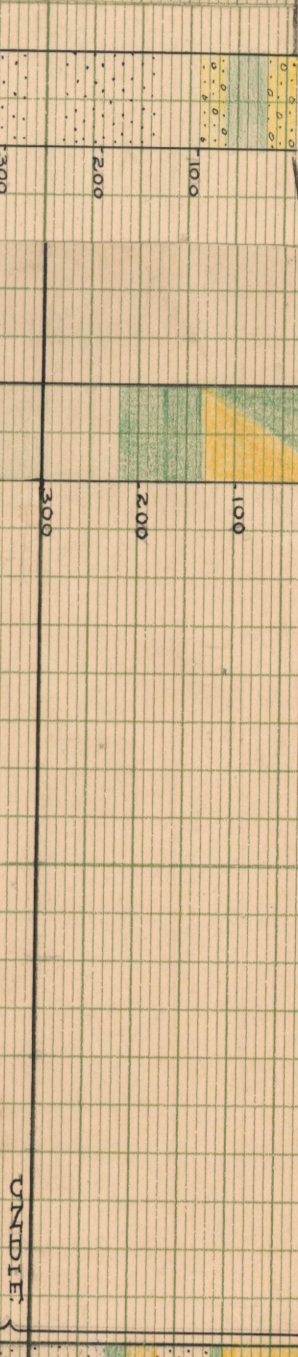


LEOLA NO. 1
NE 1/4 SEC 22, T. 2 S., R. 15 W.
ELEV. 2771 FT



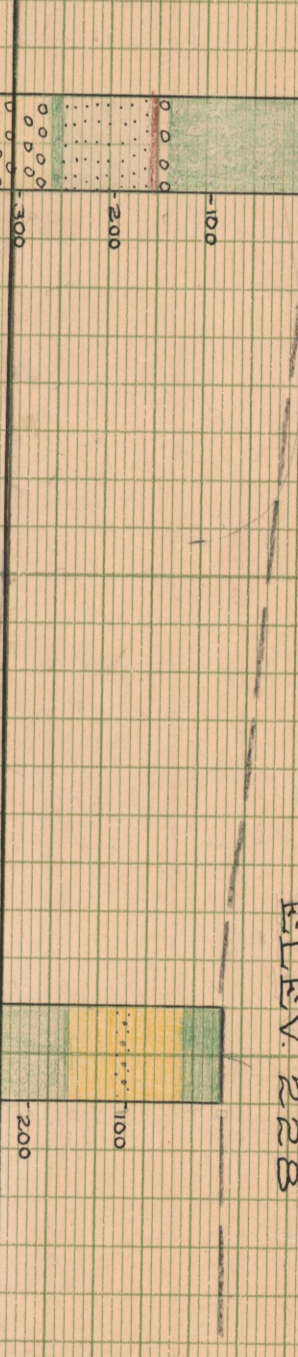
GLADYS BELL
SH. SEC. 23, T. 2 S., R. 15 W.
ELEV. 2771 FT



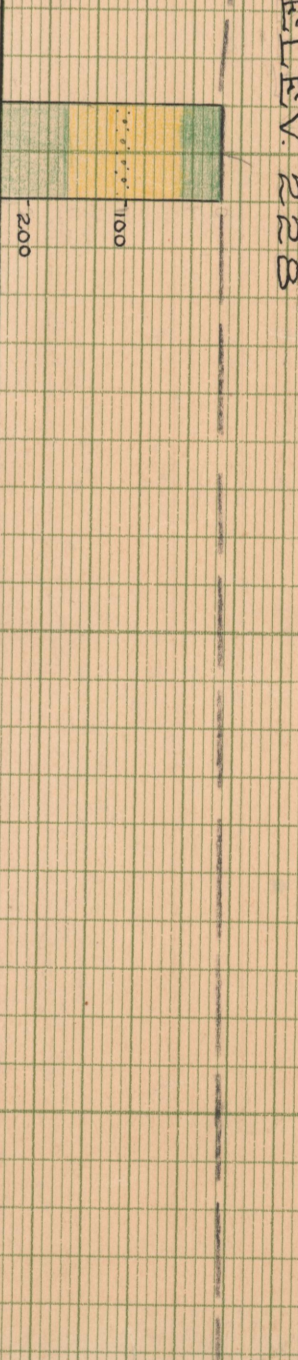
CAMERIAN TRUST NO. 4
E. 1/4 SEC. 22, T. 2 S., R. 15 W.
ELEV. 2771 FT



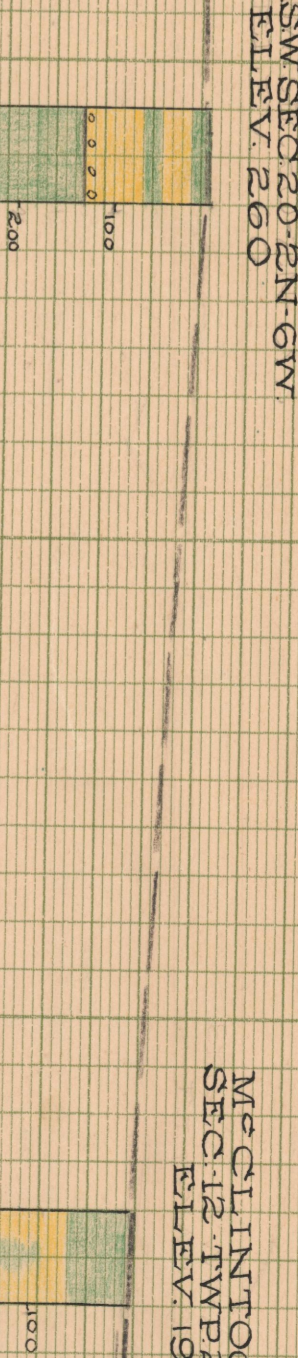
INDIVIDUAL
SH. SEC. 23, T. 2 S., R. 15 W.
ELEV. 2771 FT



ENOLA AND NO. 1
SW 1/4 SEC. 22, T. 2 S., R. 15 W.
ELEV. 2771 FT



SECRETION
NE 1/4 SEC. 22, T. 2 S., R. 15 W.
ELEV. 2771 FT



MCCLINTOCK NO. 1
SEC. 22, T. 2 S., R. 15 W.
ELEV. 2771 FT



CHALKY CLAY

CHALKY CLAY

CHALKY CLAY

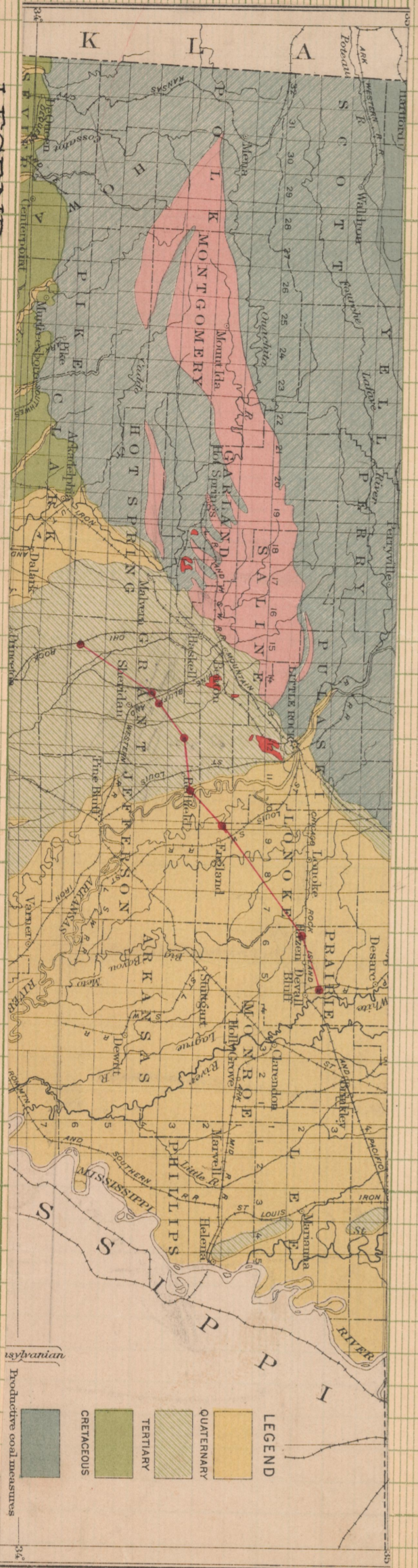
CHALKY CLAY

CHALKY CLAY

CHALKY CLAY

CHALKY CLAY

CHALKY CLAY



- LEGEND**
- 1. QUARTZITE
 - 2. SANDSTONE
 - 3. LIMESTONE
 - 4. CHALKY CLAY
 - 5. SHALE
 - 6. SLATE
 - 7. GRANITE
 - 8. GNEISS
 - 9. CONGLOMERATE
 - 10. SANDSTONE
 - 11. LIMESTONE
 - 12. CHALKY CLAY
 - 13. SHALE
 - 14. SLATE
 - 15. GRANITE
 - 16. GNEISS
 - 17. CONGLOMERATE
 - 18. SANDSTONE
 - 19. LIMESTONE
 - 20. CHALKY CLAY
 - 21. SHALE
 - 22. SLATE
 - 23. GRANITE
 - 24. GNEISS
 - 25. CONGLOMERATE