

Surveyed in 1889

Land Region Geological and Topographic Sheet
Return Wm. H. Holmes, Assistant Geologist in Charge
No. 2 Williams Part

FORT SMITH SHEET.

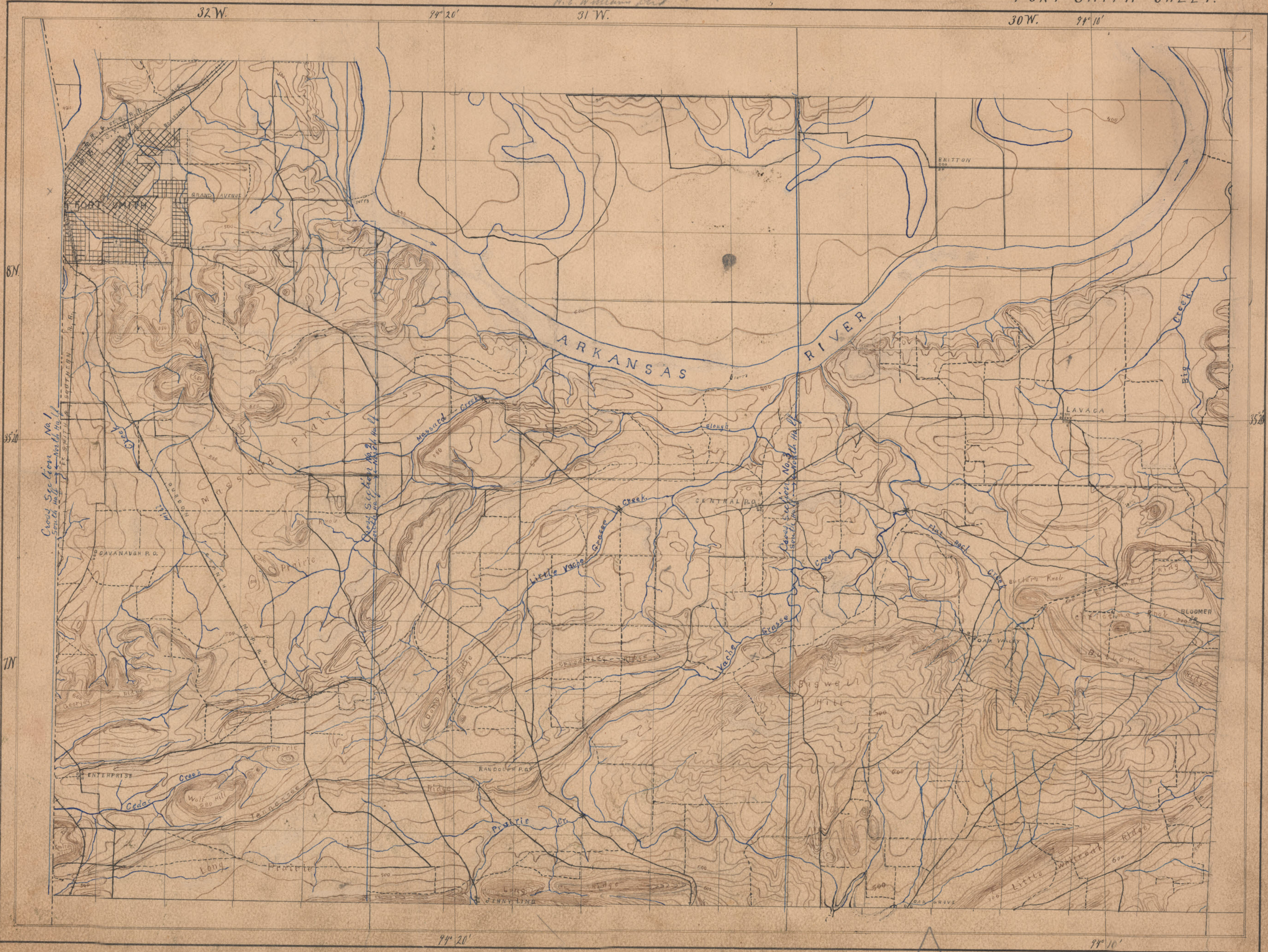
32 W.

94° 20'

31 W.

30 W.

94° 10'



Cross Section No. 1
Scale 1:10,000

Cross Section No. 2
Scale 1:10,000

Cross Section No. 3
Scale 1:10,000

Scale
10000

94° 20'

94° 10'