

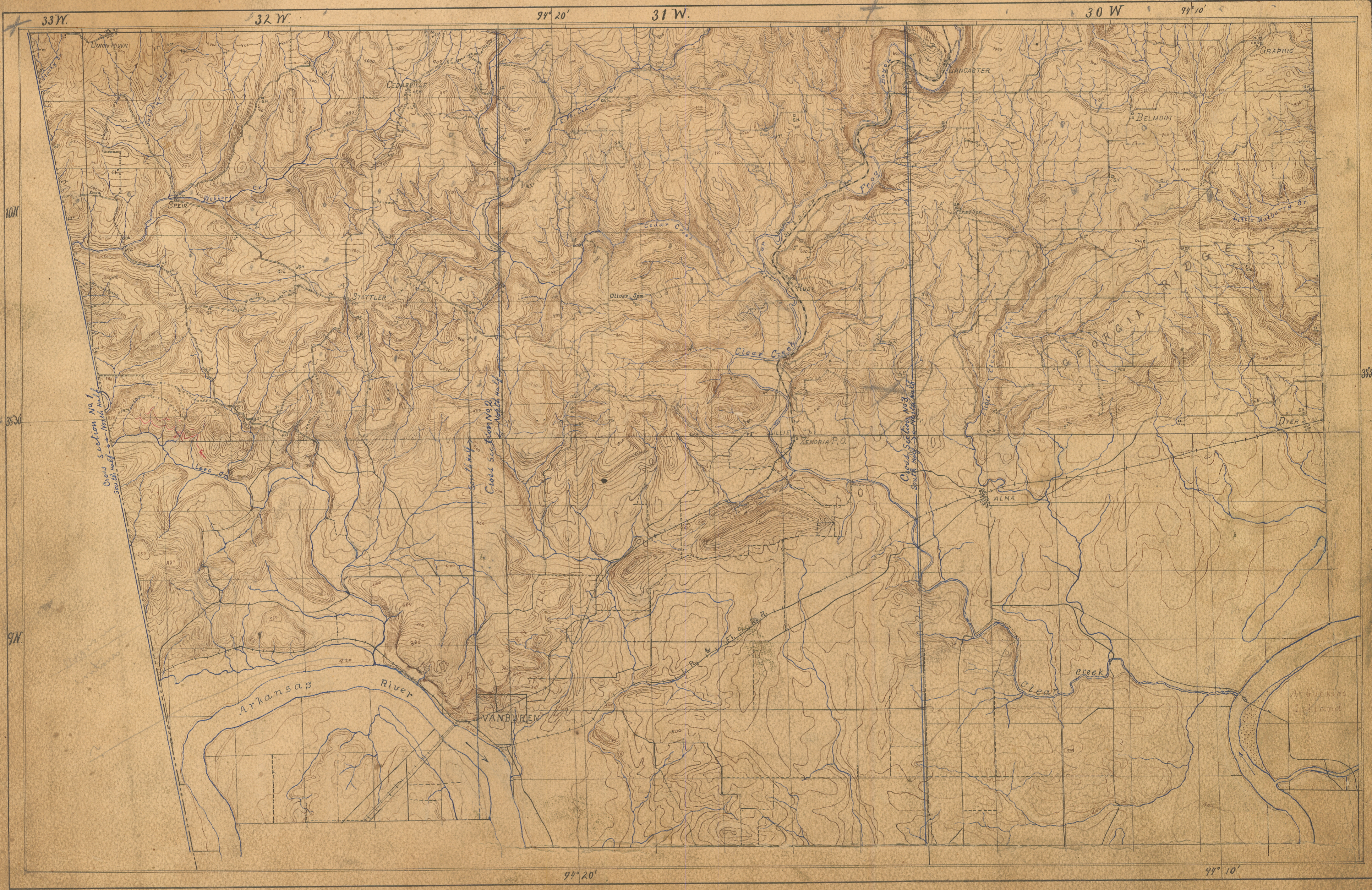
GEOLOGICAL SURVEY OF ARKANSAS JOHN C. BRANNER, STATE GEOLOGIST.

COAL REGION GEOLOGIC AND TOPOGRAPHIC SHEET

BY
ARTHUR WINSLOW, ASSISTANT GEOLOGIST IN CHARGE
H. E. WILLIAMS, C. E. SIEBENTHAL, AID.

SURVEYED IN 1888 AND 1889

VAN BUREN SHEET.



Stanford University (p. o.), California,

Aug 16 1894

Dear Mr Winalow:

I have yours of the 10th.

I send you today a copy of the engraving of the Ft Smith sheet & fractional sheet north of it. Proofs of these sheets were sent to Washington some time ago to be revised. When we did the field work as a part of Scott county and a strip in the Indian Territory to fill out the sheets along the western boundary of the state there were some changes made near the state line.

The changes however were principally north of Van Buren and consisted of the details of the topography. The same general character of topography remains on the revised sheet but the details are considerably changed near the state line. Some slight changes were made south of Fort Smith if I remember correctly but they may have been south of that sheet. Mr Williams stated to me that the topography near the state line had been rather roughly sketched and he did not think the work carefully done on the

Territory side would tie on to it. I told him
to go over the ground again near the state line
where it did not tie up well and revise it and
tie it all up correctly which he did very nicely.

The second proof has never been received here
I do not think that the changes made were of
a nature that would interfere with writing
up the Geology.

Yours very truly

J. H. Means.

P.S. I have not heard from Dr B for
some time. I expect him home some time
between the 5th & 15th of Sept.

J. H. M.

Van Buren Shells
(with letter from
Mason to Winslow
attached).