

Drilling Resumed in

Nevada County Well

Prescott—The Shepard-Purifoy well, located in township 11 south, 20 west, Nevada county, resumed drilling a week ago, after having been shut down for several weeks clearing up titles, and is picking up formations on an extreme high.

This well had a nice showing in the Nacatosh sand and it is expected to core the Meakin sand by the middle of this week. H. H. McBride, contractor, has purchased an off-setting 40 for \$40,000, for a cash consideration and the balance in oil.

Nevada County Field

Gets Another Oil Well

Camden—Another producer for the Nevada county oil field was reported today when Benedum and Trees completed their Fincher 1-A offset 600 feet north of the Fincher No. 1, for a 600-barrel well. The well was brought in at 2,150 feet in the Woodbine sand.

Benedum and Trees are continuing their efforts to widen this field and this new producer is one of the best to be completed in recent weeks.

Nevada Field Oil Test

In New Territory

Prescott—Machinery has been placed for the new oil test near Mt. Moriah, Nevada county. J. B. Yates procured the acreage for the well.

The location is on the R. W. Fuller tract, in the NE 1-4 of the SE 1-4 of section 6-13-21, and is only a short distance from Mt. Moriah. This test is south of Prescott and between this city and the Waterloo field.

Installation of the machinery is being made as the contract calls for the well to be spudded in before midnight, August 15. Operations are backed by Dr. L. J. Fincher and associates of El Dorado and the contract also calls for a deep test. This well brings the oil prospecting several miles nearer to Prescott.

Nevada Field Oil Test

In New Territory

Prescott—Machinery has been placed for the new oil test near Mt. Moriah, Nevada county. J. B. Yates procured the acreage for the well.

The location is on the R. W. Fuller tract, in the NE 1-4 of the SE 1-4 of section 6-13-21, and is only a short distance from Mt. Moriah. This test is south of Prescott and between this city and the Waterloo field.

Installation of the machinery is being made as the contract calls for the well to be spudded in before midnight, August 15. Operations are backed by Dr. L. J. Fincher and associates of El Dorado and the contract also calls for a deep test. This well brings the oil prospecting several miles nearer to Prescott.

New Nevada County Well Brought In

Special to the Gazette. 12-16-37

Prescott, Dec. 15.—After a cessation of several months, Benedum & Trees today drilled the plug and brought in their Mary Jackson No. 1, flowing 200 barrels of oil daily from the Tokio sand at a depth of 2,200 feet. The well is located in the northeast quarter of the northeast quarter of Section 9-14-20 in the new Nevada county field.

The rig was being dismantled this afternoon and will be placed in the south side of Section 4-14-20, where Benedum & Trees will begin their Mitchell No. 1. The new producer is being standardized and will be on the pump next week. The new field is producing 1,200 barrels of oil daily from the Tokio sand.

Benedum & Trees Set Casing In Mitchell No. 1 Well.

Special to the Gazette. 1-1-38

Prescott, Dec. 31.—Benedum & Trees Oil Company today set casing in the Tokio sand at 2,200 feet in its Mitchell No. 1 well, located in the northeast corner of the southwest quarter of the southeast quarter of section 4-14-20, after coring five feet of sand with good oil showing. The well will be brought in next week, it was said, and will extend the new field a quarter mile northwest. Drillers said they encountered 24 feet of Nacatosh sand at 1,200 feet with the best showing of oil in that sand in the new field. An off-set probably will be drilled to that sand.

Test Shows Rich Oil

Sand in Nevada Well

Prescott—Benedum Trees Mitchell No. 1, in section number four, has not been completed, but casing has been set at a depth of 2,200 feet and will be drilled in some time next week. A core was taken at this depth and pronounced rich in oil.

New Oil Well Extends Nevada County Field

Prescott—Interest in Nevada county's oil fields revived the swing upward Thursday when C. B. and F. (Byron Franks and associates) completed their Haynie No. 3 well, located in the SE 1-4 of the NE 1-4 of 5-14-20.

The well is flowing and has been estimated as a 200-barrel-per-day producer. The well was brought in from a level of 1,200 feet, which is in the Nacatosh sand. This well extends the field a mile northeast of the Nevark, or Benedum and Trees, field.

In the SW 1-4 of the NW 1-4, 4-15-20, Ben Webb and associates are rigging up their Boswell No. 1, which will probably be drilled to 2,200 feet in the Tokio sand.

New Nevada County Well Brought In

Special to the Gazette. 6-29-38

Prescott, June 28.—Benedum and Trees brought in an oil well on the Suckle and Blakely land, E 1-2 of SE 1-4 SE 1-4 S4 T4 R20, in Nevada county today.

Officials said it was the best well in the field. It was brought in at 2,100 feet in the Tokio sand. Four more locations are being cleared for offsets.

Standard's Warren No. 1 Hits Pay Dirt in Buckner Area.

Special to the Gazette. 8-1-38

Stamps, July 30.—Standard's Warren No. 1, Lafayette county, Buckner field, section 18-16-22, has reached pay formation at 7,213 feet. Six-inch casing has been set and cement poured. Operators are waiting for cement to set and the plug probably will be drilled tomorrow. Several cores were taken at the well, and indications are that it will be one of the best producers in the new field.

The company's McKean No. 3, section 7-16-22, has reached 7,200 feet in red shale and dolomite formations. Operations were at a standstill today, due to trouble with the rotary, but operators expect to resume drilling tomorrow.

The Standard has made another new location on the Warren land, in section 18-16-22. The well will be known as the Warren No. 2. John L. Warren, owner of land, was killed last Saturday.

The Texas-Canadian Oil Co. is erecting a rig on the Pelt lease in section

9-15-22 in Nevada county, and drilling will begin at once.

Abandon Plan For Deep Well Dowlen's No. 1 Stocks to Be Plugged Back to 1,200 Feet.

Stamps—Oil operators in charge of the Paul D. Dowlen No. 1 Stocks, in the center of the northwest quarter of the southwest quarter, section 9-15-22, Nevada county, have abandoned plans for deep exploration in the present hole, and will attempt to complete the well at approximately 1,200 feet. Thirty-six feet of saturated sand was encountered at the above depth but promoters set casing and drilled ahead, believing the lower levels would prove more productive or produce a higher grade of oil. All prospective depths, up to and including 3,500 feet, proved disappointing and it was decided to plug back and shoot casing at near 1,200 feet. There is little doubt that this area will yield oil in paying quantities.

After completion of this well operators will probably make a location for exploring the Permian lime which is found at 7,000 feet or better in this area.

It is expected that completion of the Stocks wildcat as a shallow producer will precipitate a sizeable drilling campaign in this community immediately southeast of the village of Falcon, in the extreme edge of

Nevada county.

In the Buckner field, activity just now is confined to drilling of one well, the J. L. Warren No. 2.

New Producer In Nevada Gazette County Field

9-7-38

Special to the Gazette.

Prescott, Sept. 6.—At a point along the southern Arkansas fault near Graben, 31 miles north of the discovery well of the Buckner field, the Texas-Canadian Oil Corporation, Ltd., has brought in its Stocks No. 1, in Section 9-15-22, Nevada county, opening a new producing area in the Nacatosh sand zone.

After coring 33 feet of unbroken saturation from 1,178 to 1,211 feet, which was further authenticated by the Schlumberger log, 9 5-8-inch casing was set through the Nacatosh formation. The casing then was perforated with 92 shots from 1,187 to 1,203 feet. Mud and considerable oil still were being baled from the well today while operators estimated production at from 100 to 150 barrels a day.

Heavy Saturation Encountered In Test in Magnolia Field.

Special to the Gazette. 10-7-38

Magnolia, Oct. 6.—Several feet of two saturation depths were encountered in the Grady Vaughn Levi Garrett No. 1 well, Magnolia area, last night and today. One saturation was from approximately 5,430 to 5,440 feet and the other from about 5,480 to 5,495 feet, with gas pressure and no salt or sulphur water. Operators said that either saturated depth would make good well but it is planned to go down to the contract depth in the producing lime of other wells in that area.

A. H. Boswell of Magnolia, who has interests in the new Nevada county field recently brought in by the Texas Canadian Oil Corporation's Stocks No. 1, reported that 15 new locations are being surveyed there by two engineers, thirteen of these are for the Texas Canadian company in the southern half of Section 9-15-22. Another location by Boswell, et al., is in NW NW SW 2-15-22. One for J. A. Spear, Waldo, et al., is in SE SW 18-14-21. Three rigs are expected in the area within a few days for immediate drilling of three of these wells.

Locations for 10 New Wells In Nevada Field Announced.

Special to the Gazette. 10-9-38

Prescott, Oct. 8.—Renewal of activities in the Nevada county oil fields was begun today when Texas-Canadian Oil Company and A. H. Boswell, who recently opened the new field in the Nacatosh sand by bringing in their J. M. Stocks No. 1 in the northeast quarter of the southeast quarter of section 9-15-22, announced locations for 10 additional wells on the 200-acre Stocks farm.

Derrick is up and machinery was being moved in today for the Stocks No. 2, and derrick is being erected for the Stocks No. 3. J. E. Speers et al are building derrick in the southeast corner of the southeast quarter of the southwest quarter of section 18-14-21 for a wildcat test, midway between the new field and the old Waterloo field.

A. H. Boswell and associates are clearing location in the northwest corner of the northwest quarter of the southwest quarter of section 2-15-22, about a mile northeast of the new discovery well.

O. F. Whittaker is trying to extend the Stephens trend by drilling a test in section 3-15-20 in Leake township and plans to drill the plug in the Nacatosh sand Monday.

Benedum & Trees Oil Company has derrick up for its Lelia Irby No. 1 in section 3-14-20, an extension of the Troy field.

Grady Vaughn Well Finds Oil Strata But Drills Ahead.

Special to the Gazette. 10-9-38

Magnolia, Oct. 7.—Although reporting saturation in cores at 5,430-40 and 5,485-95, operators of the Grady Vaughn Levi Garrett No. 1 in section 14-17-20 in Columbia county are drilling ahead for the better lime. If a lower level fails to produce, the operators will return to one of the pay zones already encountered and complete the well there.

The other Levi Garrett No. 1 well, that of the Atlantic Oil and Refining Co. in 13-17-20, is drilling around 4,000 feet.

Standard Oil Company's E. D. Harris No. 1 in 15-17-19 is moving in rig. This is an offset east of the Standard Oil Company's Phillips No. 1, discovery well, in the Village area.

Standard's Tena Crumpler No. 1 in 15-17-19, which has been having considerable trouble in completing, seems to have succeeded in making a well,

and now is flowing through a 3-16-inch choke and making about 200 barrels per day. At first, it was reported that it was producing one-fourth water and basic sediment, but it now is making much less water and basic sediment, and it is believed the well soon will clear itself.

Standard's Warren No. 2 in the center of the northeast quarter of the

northeast quarter of section 18-16-22 is nearly completed and is expected to become the eighth well in the Buckner area.

Tidewater Associated Oil Company's Benne No. 1 wildcat six miles south of the Village field, is down to 4,500 feet and reported nearing the Jones. It is being watched closely by oil men.

New Deep Test Well Planned In Nevada County.

Special to the Gazette. 1-10-40

El Dorado, Jan. 9.—A new deep test has been staked in Nevada county, near the Lafayette and Columbia line borders, by the Texas Canadian Oil Company, Ltd. The location is on the J. M. Stocks lease in the southeast quarter of section 9-15-22, just over the line in Nevada county, about a mile from the northwest corner of Columbia.

E. G. Bradham, of El Dorado, will drill the well, which operators plan to carry to the permian (Buckner) lime.

Test in Nevada County Field Drilling at 1,475 Feet.

Special to the Gazette. 1-25-40

Stamps, Jan. 24.—The Texas Canadian Oil Company is drilling at 1,475 feet at the Stocks No. 1, southwest southeast of Section 9-15-22, Falcon field, Nevada county, just across the Lafayette county line. The same company has drilled other wells in this vicinity and three produced for a while before a seepage of fresh water caused them to be abandoned. With drilling and completion methods much improved in the last few years, the company has faith in the area and expects to drill much deeper.

Falcon Field Well Drilling At 5,812 Feet.

Special to the Gazette. 2-18-40

Stamps, Feb. 17.—Texas Canadian Oil Company's Stocks No. 1, Falcon field, section 9-15-22, Nevada county just across the Lafayette county line, nine miles north of Stamps, is drilling ahead at 5,812. Operators cored this week for information on the various formations. The Buckner sand was topped at 5,746, which checks considerably higher than wells in the Buckner field, six miles south. Showings have been made in the Nacatosh and Travis Peak. Indications are said to be good for a producer in the Permian lime. Operators expect completion by the middle of next week.

No drilling has been done the past two months in Lafayette county's new shallow field between Stamps and Lewisville due to inclement weather. It is expected that operations will be resumed April 1. Daily production from the 10 wells in that field now is 750 barrels.

Stocks No. 1, Falcon Field Lime Wildcat, Abandoned.

Special to the Gazette. 2-25-40

Stamps, Feb. 24.—Texas Canadian's Stocks No. 1 lime wildcat in the Falcon field, Nevada county, just across the Lafayette county line, nine miles north of Stamps in section 9-15-22, was declared dry yesterday and preparations were under way for immediate abandonment. The well has kept interested oil operators guessing all week. Cores from 5,960-5,965 feet showed red shale and anhydrite, then a core taken from 5,983-5,999 showed sulphur and salt indication. A Schlumber picture was taken Thursday and the results were so favorable, operators decided to core another 20 feet in the lime section. Analysis of this core proved the lime not permeable, however, no further plans for the area have been announced by the company.

Drilling In Lafayette To Be Resumed

Special to the Gazette. 3-17-40

Stamps, March 16.—After three months of inactivity in Lafayette county's new oil field between Stamps and Lewisville, East Texas Refining Company announced yesterday a new location had been staked at 330 feet east, 990 feet south of the northwest corner of section 24-16-24, and will be known as the Warren A-3. Drilling probably will begin next week, pending word from contractors.

The company has drilled 12 wells in the new field, 10 of which are producing 750 barrels per day.

With this announcement, business activity is expected to be stimulated all over the county. It is expected that at least four wells will be drilled in different sections of the county by April 1.

Permits were obtained this week by A. H. Boswell et al to drill the C. H. Ellis No. 1 and No. 2 in section 19-16-23. The No. 1 will be drilled in the northwest corner of the southwest quarter of the northeast quarter, and the No. 2 in the northeast corner of the southwest quarter of the northeast quarter.

Oil Test Near Whelen Springs Deepened Eight Feet.

Special to the Gazette. 11-1-40

Gurdon, Oct. 31.—The Coker oil test on the Henry Guess farm, one and one-half miles south of Whelen Springs, has been deepened eight feet into the Nacatosh sand, making a total of nine feet of sand encountered since drilling began several days ago. Bailing started Tuesday and a good amount of oil is evident.

The Coker test in Nevada county across from the Little Missouri river is down more than 800 feet. Two good gas formations were encountered.

Two Tests Due In Nevada County

Special to the Gazette. 6-1-41

Stephens — Oil interest this week has centered largely around the Nevada County field, 10 miles north of Stephens, where Benedum and Trees are nearing pay sand in their P. C. Grayson No. 1, NW quarter of the SW quarter, section 11-14-20. This well is an offset to the Ritchie Grocery Company well completed last week as one of the best Tokio sand producers in the area. Depth of the sand is approximately 2,200 feet.

In the same area Berry Asphalt Company is completing the W. E. Meadows No. 2, NW quarter of the SW quarter, section 4-14-20. This well is in the Nacatosh sand at approximately 1,200 feet.

Two other tests in the Stephens area are waiting on orders after having drilled to contract depth. They are Lee Bergman's Cook No. 1, SW of the SW, section 27-15-18 Ouachita County, at depth of 1,628 feet, and the Arkansas Fuel Oil's McGaughey No. 1, NW of the NW, section 3-320 feet.

Three possible plans have been announced for this last test: To drill deeper for the deep formations, return to the Blossom sand at about 2,100 feet where it said a small producer can be made, or abandon the test.

J. T. Brodie has rigged up for an offset to his Ruth Hogue No. 1 on the outskirts of Stephens in section 21-15-19.

Seismograph tests were made this week on the Tidewater leases in this area.

Interesting Test Under Way In Nevada County.

Special to the Gazette. 5-17-42

Prescott, May 16.—M. E. Wakefield's Saunders-House No. 1, located near Sutton, south of Prescott, in the southeast northwest, Section 4-13-22, Nevada county, was drilling around 1,950 feet today and expects to reach the big lime around 5,000 feet the latter part of next week. Colonel Humphreys and Julius Fohes drilled shallow tests in this area about 20 years ago, one well being on an adjoining 40 to the new test. Atlantic Refining Company has a block of 2,000 acres adjoining the Wakefield test, while Tidewater, Lion, Magnolia, Grady Vaughn and other companies have acreage in the vicinity. This is the first lime test in Nevada county since lime oil was discovered in the Midway field, and is the most interesting test being made in southwest Arkansas.

Oil Well Cored at 3,715 Feet Near Prescott.

Special to the Gazette. 5-31-42

Prescott, May 30.—Wakefield's Sanders-Rouse No. 1, in Section 4-13-22, near Sutton, nine miles south of Prescott, topped the Buckner formation at 3,680 feet yesterday and cored to 3,715 feet and shut down to perfect titles. Drilling will be resumed Monday. The well apparently is running high structurally. The Buckner formation overlies the big lime which probably will be encountered in the next 50 feet. Leasing throughout the lower part of Nevada county has been brisk, all major companies adding to their blocks of leases.

KANARK WELL TEST HAS PRESCOTT ON EDGE

Heavy Gas Pressure Reported Forcing Mud and Water Over the Casing. 7-7-21

Prescott, Sept. 7.—The Kanark Oil Company, operating in section 16-13-21, is bailing today in an effort to get its test well to produce. The liner and packer were set yesterday, control valves were placed on the derrick floor, and everything made ready by ten o'clock this morning. The hole has been showing heavy gas pressure for several days, at times forcing mud and water over the top of the casing. Oil enthusiasts from Louisiana and towns nearby were at the well today and many leases and royalties exchanged hands.

Excitement is running high and every indication points to a real gusher. All who have seen the test say that many oil wells that came in as gushers had no better indications than this one. Each time the bailer comes back it brings come oil and gas.

BAILING IS DELAYED

Nevada County Well Must Wait Completion of Casing. 1921

Special to the Gazette. 1921
Prescott, Sept. 8.—Interest in tests for oil in Nevada county for several days has centered about the Kanark Oil Company's test in 16-13-21, directed in the center of the county. H. M. Straughan of West Virginia, in charge of the well, says that at a depth of 2,950 feet he has good showings of both oil and gas. Six-inch casing was set at about 2,850 feet, and four-inch casing was set just up into the six-inch and packed. Bailing began Tuesday, but water apparently enters as fast as removed

and it is probable no real test can be made until the four-inch casing is brought to the top.

Oil scouts from the Louisiana and Oklahoma fields are on the ground and acreage is bringing fancy prices.

The Humphrey Petroleum Company has apparently abandoned its Bluff City well at little over 3,000 feet in 16-12-30 and officials of the company are watching the outcome of the Kanark well.

Texas Oil Rigs Being Moved to Nevada County.

Special to the Gazette. 11-12-30
McNeill, Nov. 11.—There is a renewed activity in the Nevada county oil field, several rigs having been moved from Texas to Waterloo by Ed Perry for Charles Steele, representative of several oil concerns. Five truck loads of machinery have been placed on location and Perry has returned to Texas for five additional loads. When drilling will start has not been announced.

Good Showing of Oil Found in Nevada County Well.

Special to the Gazette. 12-7-31
Prescott, Jan. 26.—McDonald No. 1, being drilled on the Reed farm in northwest quarter of northwest quarter 16-17-22, near Falcon, Nevada county, at a depth of 1,192 feet struck good oil sand and gives promise of being a producer. It is said by L. L. McDonald, part owner and driller. This test is several miles southwest of the Waterloo field.

500-Barrel Well For Nevada County

Oct. 30, 1936

Special to the Gazette

El Dorado, Oct. 29.—A well that is expected to be a good producer in what may prove to be a new production area was completed in the southern end of Nevada county today for production estimated at from 400 to 500 barrels daily.

The well is the Groves No. 1 test of Benedum & Trees in Section 10-14-20, northwest of Stephens in the edge of the old Irma field.

Bailing was started in the test yesterday after plug was drilled early that morning. By this morning oil had risen in the tubing to within a few hundred feet of the top of the hole. There was little or no gas pressure and the well failed to flow.

Operators were rushing installation of pumping equipment on the well to night and it is expected that the test will be placed on the beam soon for an accurate gauge of the production. It is expected that the pumping equipment will be ready for operation about Saturday.

Test Down 2,287 Feet.

The well was bottomed at a depth of 2,287 feet at nine and three-eighths inch casing was cemented at 2,196 feet. Plug was drilled early yesterday and tubing run in the hole and bailing operations started.

Oil from the well is said to test 24.7 degrees gravity. The well is located on a 20,000 acre block about four miles southeast of the old Irma field. Four 500-barrel storage tanks have been erected on the lease.

Much Lease Activity.

Much interest in South Arkansas oil circles is attached to completion of the well. There has been much trading in leases and royalties since a good showing was obtained in drill stem tests several weeks ago.

It is expected that several other tests will be drilled if a good producer is developed. Permits have been issued for four new tests to be drilled on a south offset tract, and derrick has been erected for a test although rigging up has not been completed.

Water Filling Hole of Oil Test Near Stephens.

El Dorado, Ark., Oct. 31 (P).—Nevada county's hopes for oil production dimmed today as water was reported filling the hole of the Groves No. 1, Benedum & Trees wildcat test near Stephens. Previous reports indicated a good showing of oil. Operators said swabbing would continue in hopes of making a well. The location is section 10-14-20.

Oil Well Flow Is Half Salt Water

Democrat 11-3-36

El Dorado—Hopes for a new oil field for development in south Arkansas faded Saturday with the poor showing of the Benedum and Trees wildcat test in Nevada county.

Showing as a producer good for 400 to 500 barrels a day when first drilled in and bailed, the well in section 10-14-20, northwest of Stephens, was reported late Saturday to be turning to salt water.

The crew was swabbing and may continue this activity for a time. It was reported that between 300 and 400 barrels of fluid are being swabbed from the well but that about 50 per cent of it is salt water.

No announcement has been made of further plans. The oil sand was encountered at a depth of 2,200 feet.

May Build Pipe Line to New Nevada County Well

Camden—Construction of a pipe line to the new producer in the Stephens field by the Standard Oil Company is planned. The Groves No. 1 of Benedum and Trees, latest producer in south Arkansas, was being placed on the pump and it is estimated that the Nevada county test is good for 500 barrels per day.

This well in the southern tip of Nevada county near the old Irma field is just off highway 4, west of Camden. Storage tanks have been constructed at the Benedum and Trees producer. This well was brought in several days ago.

There is a small amount of water but the well continues to produce at a good rate. The oil tested 24 per cent gravity.

Other tests are planned in this area. The Lion Oil Company has secured several tracts in that vicinity and it is believed this company will sink some wells. Many leases have been sold and Circuit Clerk Carl Cathey reports filing of many deeds in his office here.

This is the newest producer in south Arkansas and may open up a new drilling campaign west of this city.

Nevada Well Is "Good Producer," Says Report

El Dorado — The Groves No. 1 wildcat of Benedum and Trees, in section 10-14-20, Nevada county, is a good producer, according to an official report made here Saturday by C. E. Harris, head of the Arkansas Department of Conservation.

"The well is making between 500 and 600 barrels of oil and around 450 barrels of salt water per day," Mr. Harris said. He reported the operators now have about 1,200 barrels of oil in two 500-barrel tanks and the gun barrel. One other tank is at the location but production was halted until more storage could be arranged.

Oil from the well tests 18.4 gravity, Harris said. He reported the operators now have about 1,200 barrels of oil in two 500-barrel tanks and the gun barrel. One other tank is at the location but production was halted until more storage could be arranged.

The bottom hole depth of the well is 2,186 feet and the casing seat depth is 2,170 feet.

Permits have been obtained for two other tests, Harris announced. One is a diagonal offset to the southeast and the other is to the west across a 40-acre tract.

Denied Salt Water in Well

Democrat 11-6-36
Nevada County Test Making Oil; Two New Locations Mapped.

Prescott — Nevada county's hopes for a producing oil field were bright today following a report that oil was flowing from the Benedum & Trees test well, located in the southeastern part of the county, on the North one-half of the Southeast one-half of section 10-14-20. Pumping machinery was being installed and the well is expected to produce about 500 barrels daily on the pump. Previous reports that the well showed salt water have been denied.

Today the Benedum and Trees Company began preparing ground and moving in machinery for two new tests located near the present well. The sites for the new wells are the Northeast one-half of the Southeast one-half of section 9-14-20, and Northwest one-fourth of the Northwest one-half of section 10-14-20.

Prescott business men have agreed to build a road to the scene of operations, and clearing of the right-of-way began today. Officials of the Benedum and Trees Company have announced that should a producing field develop they will open an office in Prescott.

Well Pumps 30 Barrels Oil Hourly

Nov. 6, 1936

Special to the Gazette.

El Dorado, Nov. 5.—Pumping equipment has been installed on the Groves No. 1 test of Benedum & Trees in southern Nevada county, and the well has been gauged at 30 barrels of oil an hour with about three per cent water, it was reported here today. The oil is said to test about 18.4 degrees gravity.

Production of the test will make total production of about 720 barrels a day. The test is located in section 10-14-20.

Following installation of the pumping equipment, Benedum & Trees made

locations for two additional wells to offset the newest producer. The Groves No. 2 will be located in the northeast corner of the southwest quarter of the northwest quarter of section 10-14-20, a west off-set to the discovery well. The Groves No. 3 will be a southwest off-set to the original well and will be located in the southwest corner of the southeast quarter of the northwest quarter of section 10-14-20.

Democrat 11-8-36

Benedum and Trees Oil Company continued efforts to standardize No. 1 Groves, section 10-14-20, Nevada county, which recently showed for a good pumper at total depth of 2,287.

Much Activity Follows Oil Producer

Nov. 8, 1936

Special to the Gazette.

El Dorado, Nov. 7.—The limelight of oil activities in South Arkansas this week continues to center in the southern end of Nevada county, where Benedum & Trees this week completed their Groves No. 1 test for a producer estimated at from 500 to 700 barrels a day.

The well was placed on the pump about the middle of the week and gauged 30 barrels an hour of 18.4 degree gravity oil, which is somewhat heavier than Smackover crude.

Following the good showing and production of the discovery well, Benedum & Trees staked locations and obtained permits for two additional wells to offset the discovery well. In addition, L. M. Glasco of Tyler, Tex., obtained permits for four tests in the vicinity of the discovery well. Other permits are expected to be obtained soon.

After plug was drilled on the discovery well last week and it failed to flow after being bailed for several days, decision was made to place it on the beam and pumping equipment was ordered, but was delayed in reaching the well and equipment was not installed until Wednesday.

The well made a showing of salt water, but crews kept bailing the well to prevent the water from permeating the oil sand.

Pumping operations were started early Thursday, and the well gauged approximately 30 barrels of 18.4 degree gravity oil an hour, indicating daily production of 720 barrels with about three per cent salt water. Field followers explained that that amount of salt water did not harm the well and often good producers make an even higher percentage of water.

Production Estimates Up.

Daily production of the well is expected to average from 500 to 700 barrels, which is considerably higher than the original estimates of the well at any time during the process of completion.

The test, which is the Groves Land and Timber Company No. 1 of Benedum & Trees, is located 170 feet north of the center of the north half of the southeast quarter of the northwest quarter of section 10-14-20, four miles southeast of the old Irma shallow field production. The test is northwest of Stephens and only a few miles north of the Columbia county line.

The well was completed at a total depth of 2,287 feet in the Tokio sand.

Started as a deep test, the well made a good showing of gas in the Nacatosh sand at 1,225 to 1,285 feet, but no oil, and after casing was set at 1,470 feet tested dry in the Ozane sand at 1,960 feet.

The producing sand was encountered

at 2,248 feet and after a drill stem test was made that indicated 500 barrels daily, nine-inch casing was set at about 2,221 feet. Three drill stem tests of the well were made before it was completed, all three indicating a good producer.

More Drilling Expected.

With the discovery well a proved producer, an intensive drilling campaign is expected to get under way soon. The operators of the discovery well, Benedum & Trees, have obtained permits for two offsets and have started work of erecting derricks on the site and drilling operations are expected to get under way soon.

The Groves Land and Timber Company No. 2, which is to be a west off-set to the discovery well, will be located 330 feet south and 330 feet west of the northeast corner of the southwest quarter of the northwest quarter of section 10-14-20. The other test of Benedum & Trees will be an offset to the southwest of the discovery well and will be the Groves Land and Timber Company No. 3, and is to be located 330 feet north and 330 feet east of the southwest corner of the southeast quarter of the northwest quarter of section 10-14-20.

With completion of the Groves No. 1 test, L. B. Glasco of Tyler, Tex., is expected to rush work of rigging up for his Ritchie No. 1 test in the vicinity of the new producer. Derrick has been erected on the site, but rigging up was delayed pending outcome of the Benedum & Trees test. The Ritchie No. 1 test is located in the center of the northwest quarter of the northwest quarter of section 10-14-20.

Glasco has permits for three other tests in the same area. They are the Ritchie No. 2, located in the center of the northeast quarter of the northwest quarter of the southeast quarter of section 10-14-20, the Ritchie No. 3 located in the center of the southwest quarter of the northwest quarter of the southeast quarter of section 10-14-20, and the Ritchie No. 4, located in the center of the southeast quarter of the northwest quarter of the southeast quarter of the same section.

Considerable trading in leases and royalties has been under way in Nevada county during the operations on the Groves well. The Lion Oil Refining Company is reported to have bought a lease in the southwest quarter of the southeast quarter of section 10-14-20. Ed Hollyfield, El Dorado operator, is also reported to have purchased leases in the new area.

Oil Officials Visiting New Nevada Field

Democrat 11-9-36

Prescott—A party of 14 officials of the Benedum and Trees Oil Company arrived in Prescott at mid-afternoon today by special car direct from the company's headquarters at Pittsburgh, Pa. to inspect the new Nevada county oil field, where the Groves No. 1 well of the Benedum and Trees Company is said to be good for 500 barrels of oil per day.

Mr. Benedum and Mr. Trees were members of the party, expected to be here four or five days. A thorough inspection of the territory would be made, it was said, with probability of new locations being made for drilling and the establishment of an office in Prescott.

Will Develop Oil Territory

Democrat 11-11-36

Benedum and Trees Officials Give Business Men Assurance.

Prescott—A group of officials of the Benedum & Trees Oil Company left here Tuesday after an inspection of the new oil field in the southeastern part of Nevada county. The officials spent two days going over the ground near the present test well and inspecting sites for two new tests soon to be under way. They expressed confidence that a good producing field would develop, and assured local business men that they would push the development as rapidly as possible.

Governor-elect Carl E. Bailey and several Prescott and Camden business men were guests of the oil company officials at an informal meeting during the visit of the group. Those attending as guests besides Mr. Bailey were T. J. Goughan, Camden attorney; Mayor R. P. Hamby, County Judge E. H. Weaver, W. V. Tompkins, Charles H. Tompkins, and D. L. McRae Jr.

1,000-Barrell Producer In Rainbow Field

Nov. 14, 1936

Special to the Gazette.

El Dorado, Nov. 13.—A good producer from a new deep sand in the Rainbow Field was indicated today after a drill stem test on the E. F. Gregory No. 2 well of the S. H. A. Oil Company, in section 10-17-14. After the drill stem test it was estimated that the well would be good for production of 1,000 barrels a day.

The Gregory test was deepened to the new sand from an old producing level. The new sand was encountered at 3,436 feet, and was called the Taylor B sand. The previous production of the well was obtained from the Taylor A sand at 3,360 feet.

The showing brought hopes of revived interest in the area, and may result in deepening of other small producers to the new level or may cause new drilling. Casing is being set in the well for final testing which is expected in about 10 days.

Wildcat Test Hold Attention

11-15-36
Gazette

Special to the Gazette.

El Dorado, Nov. 14.—Operations on several wildcat tests in scattered sections of South Arkansas this week shared the interest of the oil fraternity with the new production in the southern part of Nevada county but the Nevada county operations continue to be the center of the greatest interest.

Despite the increase in the amount of water produced by the Groves No. 1 test of Benedum & Trees in the edge of the old Irma field of Nevada county, the oil production of the well has been maintained at the high mark set when it was first placed on the beam. Production of the well has been maintained at around the 500 barrel per day level and reports from the test the last of the week were that the daily production of oil is about 512 barrels with about that amount of water.

The producer is located 170 feet north of the center of the north half of the southeast quarter of the north-west quarter of section 10-14-20 four miles south of the old Irma field production northwest of Stephens and is producing from the Tokio sand at 2,287 feet. A good showing of gas but no oil was obtained in the Nacatosh sand at 1,335 feet and after casing was

set at 1,470 feet the Ozane sand at 1,960 feet tested dry. The oil string of casing was set at 2,221 feet after a good showing of oil was obtained in a drill stem test at 2,248 feet.

Benedum & Trees are nearing completion of derricks for two more tests as off-sets to the producer and are expected to begin drilling operations soon. The Groves No. 2, a west off-set, is located in the northeast corner of the southwest quarter of the north-west quarter of section 10-14-20 and Groves No. 3 test, a southwest off-set, is located in the southwest corner of the southeast quarter of the north-west quarter of section 10-14-20.

L. B. Glasco of Tyler, Tex., is rigging up on his Ritchie No. 1 test for which derrick has been erected. He is expected to start drilling operations soon. The Ritchie No. 1 test is located in the center of the northwest quarter of the northwest quarter of the southeast quarter of section 10-14-20.

Glasco has obtained permits for three other tests in the same area and is expected to start operations on them in a short time.

Glasco's other permits are for the Ritchie No. 2 in the center of the northeast quarter of the northwest quarter of the southeast quarter; the Ritchie No. 3 in the center of the southwest quarter of the northwest quarter of the southeast quarter; and the Ritchie No. 4 in the center of the southeast quarter of the northwest quarter of the southeast quarter all in section 10-14-20.

Rainbow City In Spotlight

Democrat 11-15-36

Week May Determine Whether Oil Field to Stage Comeback.

El Dorado.—The next week or ten days probably will determine be staged by the Rainbow city field, about 12 miles northeast of El Dorado. Producing from a number of sands at the present time, the field has had a rather hectic history with good times and bad, and a comeback every now and then.

It is another sand now that is indicating more production for the area.

Casing has been set in the E. F. Gregory No. 2 well of the S. H. A. Oil Company, in section 10-17-14, following a good showing in a drill stem test at a new depth. The showing of the well in the test brought estimates ranging from 1,000 to 2,000 barrels daily.

The new stand, called the Taylor B-2 formation is below 3,000 feet. The original Taylor sand was hit at 3,360 feet and resulted in an active drilling campaign in the field. The Taylor sand was discovered by the same company. The Gregory No. 2 is an old producer that was deepened.

Otherwise, most interest among members of the El Dorado oil fraternity centers in the development in the Nevada county area. The Groves No. 1 of Benedum and Trees in section 10-14-20, completed recently from a depth of 2,200 feet, is flowing at the rate of 512 barrels of oil and over 600 barrels of salt water daily.

Derricks have been erected by Benedum and Trees for two other tests in the same section and Glasgow and Associates are moving on location after erection of a derrick for a third test near the new wildcat producer.

Four drilling permits, seven to plug and abandon and one to plug and perforate were issued this week by the state conservation department.

Two of the permits were issued to Benedum & Trees for their new tests in Nevada county. They were for the Groves Land and Timber company No. 2 and the Groves Land and Timber Company No. 3.

Democrat 11-15-36 Nevada county, 855 barrels, up 20 barrels; Stephens, 562 barrels, down 13 barrels;

Second Well In New Field Making Crude

Democrat 11-18-36

Benedum and Trees Believed to Have New Nevada Producer.

Camden.—Prospects of a second producer in the new Nevada county field, west of Camden, were bright today as the Groves No. 3 of the Benedum and Trees Company struck "pay dirt" at near the 1,200-foot level, with more than 500 feet of oil standing in the hole.

The Nacatosh sand was struck and coring will continue. Seven feet were cored last night and there was some gas, but no water. A drill stem test indicated that this well would become a good producer, but officials of the discovery well, the Groves Land and Timber Company No. 1, drilled by this same company, in the same section, 10-14-20, is making 500 barrels daily at 2,200 feet.

E. G. Kendall, superintendent for Benedum and Trees, said today that the Groves No. 3, off-set of the first producer, looked good and prospects were excellent. This test is southwest of the first well. The Groves No. 2 was spudded in today, Mr. Kendall said. It is a northwest off-set.

Two oil sands have been found by Benedum and Trees in this field. Locations for two other tests by this company have been made. The third well to be sunk by the company is the C. C. Fincher No. 1, also in section 10-14-20. It will be spudded in within a day or two.

The fourth well is the Lilly Block No. 1, a half mile southwest of the discovery well, in section 9. It is the most distant from production. The Fincher well is east of the producer.

Oil from the Groves No. 3 was running into the slush pit today. It assures a much larger "play" in the Nevada area and leasing and royalty activity is the greatest since the first well came in. Good prices are being paid for acreage.

Derrick for the Glasco test, in this same area, has been built and the crew is rigging up.

It was reported here today that J. D. Reynolds and H. L. Berg of Camden had been offered good prices for acreage in sections 17 and 18 in the Snow Hill deep sand sector of Ouachita county by a major oil company. Several wells are producing in that part of the county.

Another Oil Producer Near Camden

Gazette

11-19-36

Special to the Gazette.

Camden, Nov. 18.—The second producer in the new Nevada county field was assured today when two oil-soaked cores were taken from the Groves No. 3 of the Benedum & Trees well in Section 10-14-20, off-set to the Groves No. 1, discovery well that is making 500 barrels daily.

More than 500 feet of oil was standing in the drill stem today and oil was flowing into the slush pit. The well is at 1,200 feet. The oil was found in the Nacatosh sand. The discovery well is producing from the 2,200-foot level.

This well, with a second off-set, is on the land of the Groves Land and Timber Company, west of Camden.

The Groves No. 2 was spudded in today. E. G. Kendall of the Benedum & Trees Company, who is making headquarters in Camden, said that two additional wells would be drilled by his company in this sector. The fourth test will be the C. C. Fincher No. 1, east of the producer, in Section 10-14-20. The fifth well will be the Lilly Block No. 1, a half mile southwest of the Groves No. 1, and in section 9-14-20.

Lease and royalty activity increased today with news of another producer in this field. It is believed that Benedum & Trees will drill deeper seeking the second sand and not set casing at the 1,200-foot level in their Groves No. 3.

Nevada County Field Development Speeded Up

Camden.—Continuing to produce at the rate of 500 barrels of oil per day the Benedum and Trees Groves No. 1 well in Nevada county, west of Camden, has justified claims of its backers and drilling operations on other wells are going forward with renewed speed.

Leases around the well are about all taken up and circuit clerks in Nevada and Ouachita county report heavy business in the area of the old Irma field north of Stephens. Many oil men are making their headquarters in Camden and the Chamber of Commerce has started work on improving the highway to the well from highway No. 4, west of Camden.

Second Well In New Field Making Crude

Democrat 11-18-36

Benedum and Trees Believed to Have New Nevada Producer.

Camden.—Prospects of a second producer in the new Nevada county field, west of Camden, were bright today as the Groves No. 3 of the Benedum and Trees Company struck "pay dirt" at near the 1,200-foot level, with more than 500 feet of oil standing in the hole.

The Nacatosh sand was struck and coring will continue. Seven feet were cored last night and there was some gas, but no water. A drill stem test indicated that this well would become a good producer, but officials of the discovery well, the Groves Land and Timber Company No. 1, drilled by this same company, in the same section, 10-14-20, is making 500 barrels daily at 2,200 feet.

E. G. Kendall, superintendent for Benedum and Trees, said today that the Groves No. 3, off-set of the first producer, looked good and prospects were excellent. This test is southwest of the first well. The Groves No. 2 was spudded in today, Mr. Kendall said. It is a northwest off-set.

Two oil sands have been found by Benedum and Trees in this field. Locations for two other tests by this company have been made. The third well to be sunk by the company is the C. C. Fincher No. 1, also in section 10-14-20. It will be spudded in within a day or two.

The fourth well is the Lilly Block No. 1, a half mile southwest of the discovery well, in section 9. It is the most distant from production. The Fincher well is east of the producer.

Oil from the Groves No. 3 was running into the slush pit today. It assures a much larger "play" in the Nevada area and leasing and royalty activity is the greatest since the first well came in. Good prices are being paid for acreage.

Derrick for the Glasco test, in this same area, has been built and the crew is rigging up.

It was reported here today that J. D. Reynolds and H. L. Berg of Camden had been offered good prices for acreage in sections 17 and 18 in the Snow Hill deep sand sector of Ouachita county by a major oil company. Several wells are producing in that part of the county.

Another Oil Producer Near Camden

Gazette 11-19-36

Special to the Gazette.

Camden, Nov. 18.—The second producer in the new Nevada county field was assured today when two oil-soaked cores were taken from the Groves No. 3 of the Benedum & Trees well in Section 10-14-20, off-set to the Groves No. 1, discovery well that is making 500 barrels daily.

More than 500 feet of oil was standing in the drill stem today and oil was flowing into the slush pit. The well is at 1,200 feet. The oil was found in the Nacatosh sand. The discovery well is producing from the 2,200-foot level.

This well, with a second off-set, is on the land of the Groves Land and Timber Company, west of Camden.

The Groves No. 2 was spudded in today. E. G. Kendall of the Benedum & Trees Company, who is making headquarters in Camden, said that two additional wells would be drilled by his company in this sector. The fourth test will be the C. C. Fincher No. 1, east of the producer, in Section 10-14-20. The fifth well will be the Lilly Block No. 1, a half mile southwest of the Groves No. 1, and in section 9-14-20.

Lease and royalty activity increased today with news of another producer in this field. It is believed that Benedum & Trees will drill deeper seeking the second sand and not set casing at the 1,200-foot level in their Groves No. 3.

Sale of Flow From New Oil Well Reported

Dem. 11-20-36

Asphalt Company Said Buyer of Nevada Well's Production.

Prescott.—It was reported today that the Benedum & Trees Oil Co., owners of the Groves No. 1 discovery well in the southeastern part of Nevada county, has completed negotiations with the Berry Asphalt Company of Waterloo, Ark., and Chicago, Ill., whereby the asphalt company will take the production from the Groves No. 1 well and use it in the manufacture of roofing and road asphalt.

The Berry Asphalt Company has a plant at Waterloo, near the scene of the well. The Groves No. 1 well is maintaining a production level of 500 barrels daily on the pump. Several other tests in the same territory are under way.

A second producing well is reported, the Groves No. 3 of Benedum & Trees, and latest reports indicate that a good showing was made at the 1,200-foot level with 500 feet of oil standing in the hole. The oil coming from the new hole is said to be of the same grade as that coming in from other wells in the Waterloo district, a grade used extensively by the Berry Asphalt Co.

E. G. Kendall, superintendent for Benedum & Trees, said that the new well has excellent prospects.

Much Activity In Leases Near Stephens

Gazette 11-20-36

Special to the Gazette.

Camden, Nov. 19.—Because of the bringing in yesterday of the Benedum & Trees in the southern tip of Nevada county, leasing activity near Stephens increased to a new high pitch today. Record prices are being paid for wildcat acreage several miles from the two Groves wells. Two major companies paid \$10 and \$15 an acre for a 1,000-acre tract nine miles south of production. Both landowners were Stephens men.

It was decided today to set casing on the Groves No. 3 at 1,200 feet. Because of a heavy showing of gas that forced the heavy crude to flow out of the hole last night, Benedum & Trees officials decided to set casing. Several cores were taken and the drill stem test showed that this well will be a good producer. However, the oil is extremely heavy and is known as "road oil." It will make at least 500 barrels daily, and oil men say the gas pressure is strong enough to force the heavy crude out of the hole.

This is a different type oil from that found in the discovery well on the Grove Land and Timber Company in Section 10-14-20. That production of 500 barrels daily is at 2,200 feet. Two producing sands assure a great "play" in the Nevada and Stephens area.

Groves No. 2 Spudded In.

The Groves No. 2 was spudded in yesterday. It is an off-set of the discovery well, as is the No. 3 well. Derricks are up for the C. C. Fincher No. 1, in Section 10, and the Lilly Block No. 1, in Section 9, both tests to be drilled by Benedum & Trees.

Derrick is up for the W. Haynie No. 1, in Section 5, to be drilled by Cox and others. This test is two miles northwest of the proven area.

It is expected that other tests will be drilled at once. The Lion Oil Company has obtained a large block north of Stephens and will sink some tests.

Biggest problem facing the Benedum & Trees officials is lack of storage facilities. All tanks at the discovery well are filled and it was necessary to stop work until the oil could be removed. It is believed that earthen storage will be built for the Groves No. 3 output of heavy oil. There is little water in the second producer.

Big Increase In Drilling Operations

Gazette

Nov 22, 1936

Special to the Gazette.

El Dorado, Nov. 21.—Drilling operations in South Arkansas this week were the most active in several months with three widely separated sections sharing the limelight.

In contrast with the last several weeks in which the drilling activities of Benedum & Trees in the southern end of Nevada county was the center of activities, this week, operations on tests in Miller and Union counties shared interest with the Nevada tests.

Nevada county, however, continues to hold most of the attention with one producer already completed in the area, casing set for another test in a good oil sand, one other drilling and six others either drilling this week end or expected to start soon.

The Nevada county production is being obtained in a section of the county northwest of Stephens and only a few miles north of the Columbia county line. The discovery well producer is the Groves Land and Timber Company No. 1 of Benedum & Trees. The test is located 170 feet north of the center of the north half of the southeast quarter of the northwest quarter of section 10-14-20 and is producing about 500 barrels of low gravity oil per day from the Tokio sand at 2,287 feet with casing set at 2,248 feet.

Benedum & Trees have set casing at around 1,200 feet in the Groves Land and Timber Company No. 3 test, a southwest off-set to the discovery well.

A good showing of oil was obtained at that level in the Nacatosh sand. The discovery well made a good showing of gas in the Nacatosh sand but no showing of oil was obtained.

A drill stem test made this week on the No. 3 well indicated that the well would make as good if not better producer than the discovery well. After coring seven feet of the sand and making the drill test coring was continued but operators later decided to set casing in the Nacatosh sand for completion at that level.

The Groves No. 3 test is located in the southwest corner of the southeast quarter of the northwest quarter of section 10-14-20.

Surface casing has been set in the Groves Land and Timber Company No. 2 test of Benedum & Trees a west offset to the discovery well.

Permit was issued Friday for another test to be drilled northwest of the discovery well, to John R. Lewis for the William Haynie No. 1, 330 feet north and 330 feet east of the southwest corner of the southwest quarter of the northeast quarter of section 5-14-20. Derrick is being erected and drilling operations are expected to get under way in a few days.

Near Producing Sand.

It is expected that the No. 3 test will reach the Nacatosh sand in a few days. The well is located in the northeast corner of the southwest quarter of the northwest quarter of section 10-14-20.

Two additional permits were obtained Thursday by Benedum & Trees for two more tests in the area. One of the tests will be C. C. Fincher No. 1, east of the discovery well. It is located 330 feet south and 330 feet east of the northwest corner of the southwest quarter of section 10-14-20. Drilling operations are expected to get under way in a short time.

The other new test of Benedum & Trees is the Lilly Block No. 1, one-half mile southwest of the discovery well and is located 330 feet south and west of the northeast corner of the northeast quarter of the southeast quarter in section 9-14-20. Rigging up on the test is expected to be completed in a few days and drilling operations started.

L. M. Glasco of Tyler, Tex. is expected to start drilling operations in a short time on his Ritchie No. 1 test in the center of the northwest quarter of the northwest quarter of the southeast quarter of section 10-14-20.

Glasco also has permits for three more tests. The tests are the Ritchie No. 2 located in the center of the northeast quarter of the northwest quarter of the southeast quarter of section 10-14-20; the Ritchie No. 3 located in the center of the southwest quarter of the northwest quarter of the southeast quarter of section 10-14-20 and the Ritchie No. 4 located in the center of the southeast quarter of the northwest quarter of the southeast quarter of section 10-14-20.

Another large producer was indicated county east of El Dorado with a good showing obtained in a drill stem test of the F. F. Gregory No. 2 test of the S. H. A. Oil Company in section 10-14-17.

Several Sands Produce.

Producing from several sands at the present time, the field has had a rather hectic history with good times and bad with "comebacks" every now and then.

The showing is from still another sand called the Taylor B formation which was encountered at 3,800 feet. The original Taylor sand was hit at the 3,360 foot level.

The Gregory test was producing from the Taylor sand and operators decided to deepen the test. The new sand was encountered and cores showed good oil saturation. In a drill stem test, the well indicated that a producer of from 1,000 to 2,000 would be completed. Operators set casing early this week and the test is expected to be completed in about a week.

Good showing in the Gregory test is expected to result in new drilling operations in the Rainbow sector and the deepening of shallow wells to the new sand is expected to follow on completion of the S. H. A. test.

Nevada County Lease, Royalty Activities Increase.

Gazette 11-22-36
Special to the Gazette.

Prescott, Nov. 21.—Since the bringing in of Benedum & Trees Grover Land and Timer Company No. 1 in Section 10-14-20, Nevada county, which is making 500 barrels daily at a depth of 2,200 feet, lease and royalty activities have increased daily, and excitement here over new locations and developments is intense.

This well extended the Waterloo, or Irma Field in Nevada county approximately three miles, and gives hopes of production from two sands. The Waterloo Field has been producing 12 years from the Nacatosh sand with 85 wells now producing on the pump. The Waterloo oil is being used by Berry Asphalt Company and the Williams Roofing Company which have plants at Waterloo, and are operating at capacity.

Production from Benedum & Trees Grove Land and Timer No. 3, a southwest offset in the southwest corner of the southeast quarter of the northwest quarter of Section 10-14-20 from the Nacatosh sand, the oil being identical to that of the Waterloo Field, seems to confirm the belief of operators that the original field would be broadened. On a recent visit to Prescott Mr. Trees of Benedum & Trees predicted the early bringing in of a higher gravity oil than the present Nevada county production at a depth greater than the 2,200-foot Woodbine sand. Groves Land and Timber No. 3 has been spudded in in 10-14-20, and several new locations have been made.

Berry Asphalt Company today announced the closing of a contract with Benedum & Trees for the oil from their No. 1 well. Mid-West States Telephone Company of Prescott began the erec-

tion of a telephone line from the new field to Waterloo connecting with the Prescott office.

Highway 19 from Prescott to Waterloo is in good condition, and the road from Waterloo to the new wells has been graded and graveled.

All available leases near the new wells have been taken, and trading now is principally in royalty. Local abstract plants have been forced to employ additional abstractors, and the recorder's office, force has been working day and night to record oil lease transactions.

Two Wells of Wide Interest

Democrat 11-22-36
El Dorado Operators Are Watching Rainbow and Nevada Tests.

El Dorado—Members of the El Dorado oil fraternity will divide their attention between two tests during the coming week. One of these is in an old field and the other is in semiwildcat territory.

The test closest to El Dorado is the E. D. Gregory No. 2 of the S. H. A. Oil company in section 12-17-14, in the Rainbow City field, northeast of here. Testing of this well is expected to get under way about the middle of the week. Casing was set some time ago, following an excellent showing in a drill test.

The well is a small producer in the Taylor sand at 3,360 feet which was deepened to below 4,000 feet with another good formation encountered. The new sand will be known as the Taylor No. 2. In the drill stem test the well gave indications of making a producer good for 1,000 to 2,000 barrels daily. Much interest is being shown in the well and if a producer is obtained it may result in new activity in the field which already is producing a number of sands and has staged several "comebacks."

The other well of interest is the Groves No. 3 of Benedum and Trees, in section 10-14-20, Nevada county, in which casing was set for final testing after the Nacatosh sand had been encountered at 1,200 feet.

The Groves well is on the same tract as the No. 1 Groves which was completed recently as a good producer at 2,200 feet. Surface casing has been set in the No. 2 Groves by the same operators. In that area Glasgow and Associates have rigged up for the Ritchie No. 1, but drilling has not started.

Drilling operations on the Taylor No. 1 of B. F. Tomblin and Associates in the southern part of the county, near Caledonia, have been temporarily halted after the well was drilled to a depth of 2,351 feet, or below the Nacatosh sand. Operations were halted in sandy shale. Though no announcement has been made it is expected that the test will be drilled deeper.

The Nacatosh sand was encountered at 2,180 feet but tested dry. Elevation of the well is 260 feet. It is located in the northwest quarter of Section 27-19-15.

Drilling operations have been resumed on the Kitchens-Rhea and Fullenwider No. 1 test of the King Oil Corporation in section 13-17-22, six miles west of Magnolia, Columbia county, after the well was temporarily shut down at 2,900 feet.

The Kendrick No. 1 well of the Eastern Texas Production company, in the southeastern part of Columbia county, section 7-18-19, has been abandoned at 5,500 feet in salt water.

Nevada County Lease, Royalty Activities Increase.

Gazette 11-22-36
Special to the Gazette.

Prescott, Nov. 21.—Since the bringing in of Benedum & Trees Grover Land and Timer Company No. 1 in Section 10-14-20, Nevada county, which is making 500 barrels daily at a depth of 2,200 feet, lease and royalty activities have increased daily, and excitement here over new locations and developments is intense.

This well extended the Waterloo, or Irma Field in Nevada county approximately three miles, and gives hopes of production from two sands. The Waterloo Field has been producing 12 years from the Nacatosh sand with 85 wells now producing on the pump. The Waterloo oil is being used by Berry Asphalt Company and the Williams Roofing Company which have plants at Waterloo, and are operating at capacity.

Production from Benedum & Trees Grove Land and Timer No. 3, a southwest offset in the southwest corner of the southeast quarter of the northwest quarter of Section 10-14-20 from the Nacatosh sand, the oil being identical to that of the Waterloo Field, seems to confirm the belief of operators that the original field would be broadened. On a recent visit to Prescott Mr. Trees of Benedum & Trees predicted the early bringing in of a higher gravity oil than the present Nevada county production at a depth greater than the 2,200-foot Woodbine sand. Groves Land and Timber No. 3 has been spudded in in 10-14-20, and several new locations have been made.

Berry Asphalt Company today announced the closing of a contract with Benedum & Trees for the oil from their No. 1 well. Mid-West States Telephone Company of Prescott began the erec-

tion of a telephone line from the new field to Waterloo connecting with the Prescott office.

Highway 19 from Prescott to Waterloo is in good condition, and the road from Waterloo to the new wells has been graded and graveled.

All available leases near the new wells have been taken, and trading now is principally in royalty. Local abstract plants have been forced to employ additional abstractors, and the recorder's office force has been working day and night to record oil lease transactions.

Camden—A good oil showing, reported in the second well in the new southeast Nevada county field, led to the belief that there would be rapid developments in the new area and a drilling campaign of considerable proportions. *Dem. 11-22-36*

Big Increase In Drilling Operations

Gazette 11-22-36

Special to the Gazette:

El Dorado, Nov. 21.—Drilling operations in South Arkansas this week were the most active in several months with three widely separated sections sharing the limelight.

In contrast with the last several weeks in which the drilling activities of Benedum & Trees in the southern end of Nevada county was the center of activities, this week, operations on tests in Miller and Union counties shared interest with the Nevada tests.

Nevada county, however, continues to hold most of the attention with one producer already completed in the area, casing set for another test in a good oil sand, one other drilling and six others either drilling this week end or expected to start soon.

The Nevada county production is being obtained in a section of the county northwest of Stephens and only a few miles north of the Columbia county line. The discovery well producer is the Groves Land and Timber Company No. 1 of Benedum & Trees. The test is located 170 feet north of the center of the north half of the southeast quarter of the northwest quarter of section 10-14-20 and is producing about 500 barrels of low gravity oil per day from the Tokio sand at 2,287 feet with casing set at 2,248 feet.

Benedum & Trees have set casing at around 1,200 feet in the Groves Land and Timber Company No. 3 test, a southwest off-set to the discovery well.

Near Producing Sand.

It is expected that the No. 3 test will reach the Nacatosh sand in a few days. The well is located in the northeast corner of the southwest quarter of the northwest quarter of section 10-14-20.

Two additional permits were obtained Thursday by Benedum & Trees for two more tests in the area. One of the tests will be C. C. Fincher No. 1, east of the discovery well. It is located 330 feet south and 330 feet east of the northwest corner of the southwest quarter of section 10-14-20. Drilling operations are expected to get under way in a short time.

The other new test of Benedum & Trees is the Lilly Block No. 1, one-half mile southwest of the discovery well and is located 330 feet south and west of the northeast corner of the northeast quarter of the southeast quarter in section 9-14-20. Rigging up on the test is expected to be completed in a few days and drilling operations started.

L. M. Glasco of Tyler, Tex. is expected to start drilling operations in a short time on his Ritchie No. 1 test in the center of the northwest quarter of the northwest quarter of the southeast quarter of section 10-14-20.

Glasco also has permits for three more tests. The tests are the Ritchie No. 2 located in the center of the northeast quarter of the northwest quarter of the northwest quarter of the southeast quarter of section 10-14-20; the Ritchie No. 3 located in the center of the southwest quarter of the northwest quarter of the southeast quarter of section 10-14-20 and the Ritchie No. 4 located in the center of the southeast quarter of the northwest quarter of the southeast quarter of section 10-14-20.

Another large producer was indicated county east of El Dorado with a good showing obtained in a drill stem test of the F. F. Gregory No. 2 test of the S. H. A. Oil Company in section 10-14-17.

Several Sands Produce.

Producing from several sands at the present time, the field has had a rather hectic history with good times and bad with "comebacks" every now and then.

The showing is from still another sand called the Taylor B formation which was encountered at 3,800 feet. The original Taylor sand was hit at the 3,360 foot level.

The Gregory test was producing from the Taylor sand and operators decided to deepen the test. The new sand was encountered and cores showed good oil saturation. In a drill stem test, the well indicated that a producer of from 1,000 to 2,000 would be completed. Operators set casing early this week and the test is expected to be completed in about a week.

A good showing of oil was obtained at that level in the Nacatosh sand. The discovery well made a good showing of oil of gas in the Nacatosh sand but no showing of oil was obtained.

A drill stem test made this week on the No. 3 well indicated that the well would make as good if not better producer than the discovery well. After coring seven feet of the sand and making the drill test coring was continued but operators later decided to set casing in the Nacatosh sand for completion at that level.

The Groves No. 3 test is located in the southwest corner of the southeast quarter of the northwest quarter of section 10-14-20.

Surface casing has been set in the Groves Land and Timber Company No. 2 test of Benedum & Trees a west offset to the discovery well.

Permit was issued Friday for another test to be drilled northwest of the discovery well, to John R. Lewis for the William Haynie No. 1, 330 feet north and 330 feet east of the southwest corner of the southwest quarter of the northeast quarter of section 5-14-20. Derrick is being erected and drilling operations are expected to get under way in a few days.

Will Start New Test Well in Nevada County

Prescott—A contract was signed Wednesday for the drilling of another test well in the new oil field of southeastern Nevada county. L. M. Glasco granted the contract for the drilling to E. O. Olds, who began moving in machinery. Drilling was expected to get underway today. The location is the northwest quarter of the southeast quarter of section 10-14-20. It lies one-fourth of a mile southeast of the Benedum & Trees discovery well, the Groves No. 1.

The Benedum & Trees well has been producing steadily on the pump for several weeks, with a daily output of about 500 barrels. The Berry Asphalt Co. of Waterloo purchased the flow from this well and is using it in the manufacture of roofing and road asphalt at its Waterloo plant.

A second well of the Benedum & Trees Co., the Groves No. 3, came in as a producer last week at the 1,200-foot level. Casing was set at that level, but no disposition has yet been made of the output from this well.

Drilling has been in progress for several days on the Groves No. 2, also of the Benedum & Trees Co. Several other tests by different companies are under way in the same field. Trading in leases and royalties continues here at a furious pace, with evidence that the big oil companies expect the new field to develop large production.

Drilling in Nevada.

Dem. 11-29-36
A flurry of drilling has started southeast of the shallow Irma field, Nevada county, Arkansas, as a result of two recent developments by Benedum and Trees in section 10-14-20. Benedum and Trees' No. 1 Groves, in that section, recently completed, pumping 21 gravity oil from the 2,200-foot level, is still making about 500 barrels, net, in oil which will be sold to an asphalt company for 50 cents per barrel. The same company has set casing at 1,217 feet in No. 3 Groves, in the same section, that showed 13 gravity oil in a drill stem test at 1,200 to 1,231 feet in the Nacatosh. Four additional locations have been made nearby, three by Benedum and Trees.

New Producer Completed In Union County

Gazette 11-29-36

Special to the Gazette.

El Dorado, Nov. 28.—One new producer was completed in South Arkansas this week and another is expected to be completed this week-end to feature oil activities. The new producer is the E. F. Gregory No. 3 test of the S. H. A. Oil Company in the Rainbow field east of El Dorado in Union county and the expected completion is the Groves No. 3 test of Benedum & Trees in the new Nevada county field northwest of Stephens.

The Rainbow City test was completed at a depth of 3,455 feet for a producer of from 500 to 600 barrels of oil per day.

The test is the deepest producer in the field and is producing from the sixth sand discovered in the area. The present strata is known as the Taylor B sand.

The Gregory test, located in section 10-14-17, was producing from the original Taylor sand at about 3,360 feet and was deepened to the new level. The new sand was encountered at about 3,450 feet, and after a drill stem test two weeks ago, which showed for a good producer, casing was set.

Plug was drilled Tuesday and swabbing started. After a short time the well began flowing and production was estimated at about 500 barrels per day.

Completion of the well for a better producer at a new depth is expected to result in the deepening of several other tests in the area or the drilling of new tests.

The completion expected this week in the Nevada county field is the Groves Land and Timber Company No. 3 of Benedum & Trees located in the southwest corner of the southeast quarter of the northwest quarter of section 10-14-20, a southwest offset to the Groves No. 1 discovery well.

The well logged top of the Nacatosh sand at 1,217 feet and was bottomed at 1,231 feet. On a one-hour drill stem test the well showed 500 feet of 13 gravity oil. Operators set casing last week and plans were made to drill plug and complete the well this week-end.

West Off-set Due.

Another test in the same sector expected to reach the interesting stage

this week-end is the Groves Land and Timber Company No. 2 test, a west offset to the discovery well.

Operators are nearing the Nacatosh sand below 1,200 feet and are expected to begin coring in the sand in a few days. The test is located in the northeast corner of the southwest quarter of the northwest quarter of section 10-14-20.

The producing well in the area is the Groves No. 1 well of Benedum & Trees, located in the north half of the southeast quarter of the northwest quarter of section 10-14-20. The discovery well is producing about 500 barrels per day of low gravity oil from the Tokyo sand at 2,287 feet. The discovery well tested gas but no oil in the Nacatosh sand. Oil from the No. 1 well is being sold by the producers to the Berry Asphalt Company at Waterloo.

Drilling operations are expected to get under way soon on four other tests in the Nevada county area. Two of the tests are wells of Benedum & Trees, one of L. M. Glasco of Tyler, Tex., and the other a test of John R. Lewis of Fort Morgan, Col. Glasco has permits for three additional wells but has not yet started rigging-up operations.

The other two tests of Benedum & Trees are the L. Block No. 1 in the northeast corner of the northeast quarter of the southeast quarter of section 9-14-20 and the C. C. Fincher No. 1 in the northwest corner of the southwest quarter of the northeast quarter of section 10-14-20.

Rigging up has been completed on the Fincher test and drilling is expected to be started in a short time. Rigging up is nearing completion on the Block test and drilling is expected to be started this week.

Lewis has erected derrick on his William Haynie No. 1 test in the southwest corner of the southwest quarter of the northeast quarter of section 5-14-20 and rigging up is expected to be rushed to completion this week.

Glasco Operations.

Glasco is reported to have completed rigging up operations on his Ritchie No. 1 test in the center of the northwest quarter of the northwest quarter of the southeast quarter of section 10-14-20 and is expected to start drilling operations soon.

Glasco has permits for three other tests in the same area but has not started operations as yet.

His other three permits are for the Ritchie No. 2, located in the center of the northeast quarter of the northwest quarter of the southeast quarter of section 10-14-20; the Ritchie No. 3, located in the center of the southwest quarter of the northwest quarter of the southeast quarter of section 10-14-20 and the Ritchie No. 4 located in the center of the southeast quarter of the northwest quarter of the southeast quarter of section 10-14-20.

The completed producer in the Nevada county sector is from a different sand than production in the Waterloo field to the northwest. Production in the Waterloo area is from the Nacatosh sand. Completion of new wells in the Nacatosh sand in the new area will extend the production and the discovery well in the Tokyo sand gives production from two sands in the county.

With the new activity in Nevada county considerable lease trading has been under way and several major companies as well as some of the larger independent producers are reported to have purchased large blocks of leases and more drilling activity is expected to get under way.

Permits Issued.

Four drilling permits were issued by the state Conservation Department along with three permits to plug and abandon tests. Log of one well was filed.

Three of the drilling permits were for tests in Nevada county, two for Benedum & Trees and one for John R. Lewis and the other was to the Root Petroleum Company.

The Lewis permit was for the William Haynie No. 1 located 330 feet north and 330 feet east of the southwest corner of the northwest quarter of the northeast quarter of the southwest corner of the northwest quarter of the northeast quarter of section 5-14-20 in Nevada county. *Dem. 11-29-36*

The Benedum & Trees tests were for the Lilly Block No. 1 located 330 feet south and 330 feet west of the northeast corner of the northeast quarter of southeast quarter of section 9-14-20 in Nevada county and the C. C. Fincher No. 1 located 330 feet south and 330 feet east of the northwest corner of the southwest quarter of the northeast quarter of section 10-14-20 in Nevada county.

Big Gasser In Nevada County Field

Special to the Gazette. **12-1-36**

Camden, Nov. 30.—A huge gasser was added to the two producing oil wells in the Nevada field, west of Camden, today when a test on the Benedum & Trees Grove No. 2 came in with a flow estimated at 4,000,000 cubic feet a day.

Officials of the Arkansas Conservation Board checked the well. The flow was gauged this afternoon.

The well is down 1,218 feet. Gas was struck at about the same level as was oil in the Grove No. 3. This showing of gas together with the estimated production of 1,000 to 1,200 barrels of oil daily of the Grove No. 3 of the same company, made it certain that the Nevada field would get a big "play." The discovery well of this same company, the Grove No. 1, is making 500 barrels a day at the 2,200-foot level.

All these wells are in section 10-14-20. The second and third wells are in the Nacatosh sand while the discovery well is at the lower level in the Tokyo sand.

Little Oil In Hole.
The No. 2 on the Grove Land and Timber Company tract, offset to the discovery well, came in as a gasser yesterday, and in 15 minutes blew away an eight-inch elbow on the pipe leading from the well. Several feet of oil sand was found in the well. There is a little oil in the hole. This is the first time that gas in large quantities has been found in this new field, and this adds to the interest in the drilling campaign.

With two pay levels found, plus the gas pressure, a large field is expected to be developed, with several new locations being made for tests.

The Groves No. 3, offset of the discovery well, and the second producer, was bailed last week after casing had been set at 1,200 feet. The plug was drilled in and with each trip of the bailer, 56 barrels of oil was brought to the top. Pumping equipment was being installed today and an accurate gauge will be made as soon as it is completed. The oil is of heavy grade. Oil men believe the well will make at least 1,000 barrels daily. The rig on the No. 3 well was moved by the Benedum & Trees Company to the C. C. Fincher No. 1, in the northwest corner of the southwest quarter of section 10-14-20.

The Fincher No. 1 was spudded in a few days ago. Surface casing was set today.

Other Locations Made.
Locations for the Fincher Nos. 1 and 3 tests have been made in the same section. All are offsets of the discovery well. Locations also have been made for the Grove Nos. 4 and 5 of the Benedum & Trees Company in the same section. It was said today that the same company has planned a test in section 13 near the county line.

Rig from the Grove No. 2 will be moved to the Lilly Block No. 1, in section 9, and drilling will start immediately.

Mickey McDonald and associates have set surface casing in section 5 on their W. Haynie No. 1.

L. M. Glasco has set surface casing in his Ritchie No. 1, and has permits for three other wells, all in section 10-14-20.

Lease and royalty buying continued unabated in Nevada, Ouachita and Columbia counties today.

The greatest drilling campaign since the boom days is planned for this sector.

New Gasser to Mean Boom in Nevada Field

Democrat 12-1-36
Officially Gauged at 41 Million Feet; Leasing Active.

Camden — The new gas well of Benedum & Trees, the Grove No. 2, in the new field of southeast Nevada county, which blew in Sunday, was officially gauged today by the Arkansas Natural Gas Company as making gas at the rate of 41,000,000 cubic feet daily.

Already the effect of the new gasser, something of a surprise as no gas wells had been completed in that locality, was being felt, and trading in leases was flourishing even in southwest Ouachita county and around Stephens, nine or ten miles from the new well.

The depth of the wells is 1,218 feet and gas was struck at about the same level as the oil strike in the Grove No. 3 of the same company, the second oil well in the new field. The Grove No. 3 is estimated to be good for 1,000 barrels or more and the discovery well, the Grove No. 1 is producing 500 barrels daily.

The No. 2, on the Grove Land and Timber Co., tract came in suddenly and in 15 minutes blew away an eight-inch elbow on a pipe leading from the well. Several feet of oil sand also were encountered, it was reported.

Work is now under way on the C. C. Fincher No. 1 of Benedum & Trees and it may be the next producer. Locations have been made for the Fincher No. 2 and No. 3, and the Grove No. 4 and No. 5.

Coring Started on C. C. Fincher Well in Nevada County.

Special to the Gazette. **12-2-36**
Camden, Dec. 1.—Coring began today on the C. C. Fincher No. 1 of the Benedum & Trees Company in the new Nevada field. The Nacatosh sand level was reached yesterday. It is believed that the oil sand will be found at this depth, as in the Groves No. 3 nearby.

Interest now centers in this fourth well of the Benedum & Trees. Pumping equipment is being placed on the Groves No. 3 and it will be completed soon. Oil men say it will make at least 1,000 barrels.

The Groves No. 2 was gauged at 41,000,000 cubic feet of gas Monday. All these wells are in 10-14-20. It is the first gasser in this field.

Drilling continues in the Lilly Block No. 1 and the Mickey McDonald test. Locations for other wells have been made and drilling will start at once. Glasco is nearing the Nacatosh level in his test and coring is expected to start tomorrow.

Well in New Nevada County Field Cored

Camden (P)—Coring was under way today at the C. C. Fincher No. 1, Benedum & Trees Company, in the new Nevada county field. The coring was in the Nacatosh sand, where oil was found at the nearby Groves No. 3, where pumping equipment now is being erected.

The Groves No. 2 came in as a gasser Sunday, production being gauged yesterday at 41,000,000 cubic feet daily.

Coring Started on C. C. Fincher Well in Nevada County.

Special to the Gazette. **12-2-36**
Camden, Dec. 1.—Coring began today on the C. C. Fincher No. 1 of the Benedum & Trees Company in the new Nevada field. The Nacatosh sand level was reached yesterday. It is believed that the oil sand will be found at this depth, as in the Groves No. 3 nearby.

Interest now centers in this fourth well of the Benedum & Trees. Pumping equipment is being placed on the Groves No. 3 and it will be completed soon. Oil men say it will make at least 1,000 barrels.

The Groves No. 2 was gauged at 41,000,000 cubic feet of gas Monday. All these wells are in 10-14-20. It is the first gasser in this field.

Drilling continues in the Lilly Block No. 1 and the Mickey McDonald test. Locations for other wells have been made and drilling will start at once. Glasco is nearing the Nacatosh level in his test and coring is expected to start tomorrow.

Big Gasser In Nevada County Field

Special to the Gazette. **12-2-36**

Camden, Nov. 30.—A huge gasser was added to the two producing oil wells in the Nevada field, west of Camden, today when a test on the Benedum & Trees Grove No. 2 came in with a flow estimated at 4,000,000 cubic feet a day.

Officials of the Arkansas Conservation Board checked the well. The flow was gauged this afternoon.

The well is down 1,218 feet. Gas was struck at about the same level as was oil in the Grove No. 3. This showing of gas together with the estimated production of 1,000 to 1,200 barrels of oil daily of the Grove No. 3 of the same company, made it certain that the Nevada field would get a big "play." The discovery well of this same company, the Grove No. 1, is making 500 barrels a day at the 2,200-foot level.

All these wells are in section 10-14-20. The second and third wells are in the Nacatosh sand while the discovery well is at the lower level in the Tokyo sand.

Little Oil In Hole.
The No. 2 on the Grove Land and Timber Company tract, offset to the discovery well, came in as a gasser yesterday, and in 15 minutes blew away an eight-inch elbow on the pipe leading from the well. Several feet of oil sand was found in the well. There is a little oil in the hole. This is the first time that gas in large quantities has been found in this new field, and this adds to the interest in the drilling campaign.

With two pay levels found, plus the gas pressure, a large field is expected to be developed, with several new locations being made for tests.

The Groves No. 3, offset of the discovery well, and the second producer, was bailed last week after casing had been set at 1,200 feet. The plug was drilled in and with each trip of the bailer, 56 barrels of oil was brought to the top. Pumping equipment was being installed today and an accurate gauge will be made as soon as it is completed. The oil is of heavy grade. Oil men believe the well will make at least 1,000 barrels daily. The rig on the No. 3 well was moved by the Benedum & Trees Company to the C. C. Fincher No. 1, in the northwest corner of the southwest quarter of section 10-14-20.

The Fincher No. 1 was spudded in a few days ago. Surface casing was set today.

Other Locations Made.
Locations for the Fincher Nos. 1 and 3 tests have been made in the same section. All are offsets of the discovery well. Locations also have been made for the Groves Nos. 4 and 5 of the Benedum & Trees Company in the same section. It was said today that the same company has planned a test in section 13 near the county line.

Rig from the Grove No. 2 will be moved to the Lilly Block No. 1, in section 9, and drilling will start immediately.

Mickey McDonald and associates have set surface casing in section 5 on their W. Haynie No. 1.

L. M. Glasco has set surface casing in his Ritchie No. 1, and has permits for three other wells, all in section 10-14-20.

Lease and royalty buying continued unabated in Nevada, Ouachita and Columbia counties today.

The greatest drilling campaign since the boom days is planned for this sector.

Nevada County May Have More Wells

Special to the Gazette. **12-4-36**

El Dorado, Dec. 3.—Completion of two more producers in the new Nevada county field is expected in a short time following completion of a successful drill stem test on one well and good showings obtained in cores taken from the sand in another well.

A drill stem test was taken this morning on the Fincher No. 1 test in the northwest corner of the southwest quarter of section 10-14-20, and a showing of gas estimated at 50,000,000 cubic feet daily production capacity was obtained. A total of 19 feet of oil saturated sand was cored before the drill stem test was made. Operators are expected to set casing for final testing in a few days. The top of the Nacatosh sand was encountered at 1,218 feet.

The test is being drilled by Benedum and Trees, operators who have completed three other producers in the area.

L. M. Glasco of Tyler, Tex., also has cored the Nacatosh sand in his Ritchie No. 1 test, also in section 10-14-20. Glasco topped the oil sand at 1,232 feet and cored 14 feet of well saturated oil sand. No drill stem test has been made, but it is expected that casing will be set in a short time for final completion of the test.

Glasco has permits for three other wells on the same lease, but is not expected to begin operations on his other tests until the No. 1 well is completed.

Three Producers in Field.
There are at present three producers in the Nevada county field. The discovery well is the Grover No. 1 test of Benedum & Trees in section 10-14-20, which is producing about 500 barrels of low gravity oil daily on the beam from the Tokyo sand at a level of about 2,200 feet.

The other producers are the Groves No. 2 well, completed early this week for a giant gas well gauged at 41,000,000 cubic feet daily production in the Nacatosh sand at 1,226 feet. Gas from the well is used to operate rigs on other tests. The well is located in section 10-14-20. The other producer is the Groves No. 3 test of Benedum & Trees, also in section 10-14-20, which is being placed on the pump. Production of the well from a depth of 1,200 feet is expected to be from 800 to 1,000 barrels a day.

Mickey McDonald was reported today to be coring near the top of the Nacatosh sand in his William Haynie No. 1 test in section 9-14-20, and Benedum & Trees are drilling below 900 feet in their Lilly Block No. 1 test in section 9-14-20.

Though no permits have been issued by the state Conservation Department here, it is expected that others will be issued soon for additional tests in the Nevada county area.

Louisiana Test Watched.
A wildcat test in northern Louisiana that is causing considerable interest among members of the oil fraternity in El Dorado is the Patton No. 1 test being drilled by E. T. Oakes in section 1-20n-5w, Claiborne parish.

Reports from the well today were that six and five-eighths inch casing has been set at a depth of about 5,300 feet after a good oil sand was cored at that depth. The sand is believed to be the Glen Rose formation. The well is checking 150 feet higher than the Sugar Creek field.

The test is located near the northeast corner of the section, about 20 miles northeast of Homer and about 20 miles south of Junction City.

Development Is Speeded Up

Democrat 12-4-36
Nevada Field Comes to Front Rapidly; New Gasser Likely.

El Dorado — A drill stem test was taken yesterday on the Fincher No. 1 test in the southwest quarter of section 10-14-20, and a showing of gas, estimated at 50,000,000 cubic feet daily production, was obtained. Nineteen feet of oil saturated sand was cored before the test was made.

The test is being drilled by Benedum and Trees, operators, who have completed three other producers in this area.

L. M. Glasco of Tyler, Tex., had cored the Nacatosh sand in his Ritchie No. 1 test, also in section 10-14-20, where he cored 14 feet of well saturated oil sand and topped the oil sand at 1,232 feet.

The discovery well in the Nevada county field is the Grove's No. 1, test of Benedum and Trees, producing about 500 barrels of low gravity oil daily.

The other producers are the Groves No. 2 and the Groves No. 3. Production of No. 3, is expected to be from 800 to 1,000 barrels a day.

It was reported yesterday that Mickey McDonald is coring near the top of the Nacatosh sand in his William Haynie No. 1, in section 9-14-20. At Lilly Block No. 1 test, section 9-14-20, workers are drilling below 900 feet.

New Nevada County Field

Benedum and Trees made three more locations last week in their newly discovered heavy oil field in Nevada county, Ark., all being in section 10-14-20, and are Nos. 4, 5, and 6 Groves. This company has completed No. 2 Groves in that section as a four-million foot Gasser in the Nacatosh at 1,225 feet, and is standardizing No. 3 Groves in the same section which has total depth of 1,243 feet and is standing with 700 feet of oil in the hole. No. 1 has been completed at 2,190 feet and is pumping 125 barrels of oil and 150 barrels of salt water daily.

Possibility of Permian lime production in the Moro Bay district of Bradley county was eliminated last week when Phillips Petroleum Company and Joe Modisett abandoned No. 1 Brown, section 28-16-12, at total depth of 5,196 feet, after it cored salt water in the Permian lime topped at 4,880 feet. The first 20 feet carried salt water. It was on a geophysical high.

S. H. A. Oil Company has opened a new producing lense in the old Rainbow City field by completing No. 2 E. F. Gregory, section 10-17-14, at 3,436 feet, flowing 235 barrels of oil daily, free of water.

Joiner et al are curing titles around their No. 1 Montana Realty Co., section 3-17-28, Miller county, that showed oil and had seven-inch casing cemented at 5,270 feet, with total depth of 5,278 feet. H. L. Hunt has leased several thousand acres in townships 16 and 17, ranges 27 and 28 and reached over into Bowie county, Texas, with his block. J. K. Wadley is adding to his holdings in 16 and 17, ranges 27 and 28 near Fouke. C. A. Whittington and Al Sutton, the latter of Tyler, Tex., are leasing in this area.

H. L. Hunt has also taken about 1,000 acres near C. V. Lenz's No. 7 Dale, section 24-15-26, where seven-inch casing was cemented at 4,208 feet after a reported oil sand was logged from 4,210 to 4,216 feet. J. T. Parks et al have spudded and set 482 feet of ten-inch surface casing in No. 1 Dean in the same section, 1,800 feet south of Lenz's test.

Nevada Oil Field Rapidly Growing

Special to the Gazette. **12-6-36**

El Dorado, Dec. 5.—With two oil producers and one gasser completed and two more wells expected to be completed soon, Nevada county is rapidly assuming the proportions of an oil field.

In addition to the three wells expected to be completed soon, there are two more in the area that are nearing the producing sand and permits have been issued for three additional tests.

The newest producer in the field is the Groves Land and Timber Company No. 3 of Benedum & Trees in Section 10-14-20, that was completed last week-end.

The test, located in the southwest corner of the southeast quarter of the northwest quarter of Section 10-14-20, was bottomed at 1,237 feet and nine-inch casing set at 1,225 feet. Prior to the setting of casing operators made a drill stem test and obtained a showing of 500 feet of 13 gravity oil in a one-hour test.

When plug was drilled on the well early this week and bailing started, it was believed that the well would flow and would be good for production of about 1,000 to 1,200 barrels of oil per day. However, since that time the flow has stopped and the well is being standardized. The production on the beam, according to interested parties here, is expected to be from 800 to 1,000 barrels per day.

Big Gas Well Brought In.

Later this week, the Groves Land and Timber Company No. 2 test of Benedum & Trees was completed for a big gas well. The well tested dry on a drill stem test from 1,180 to 1,200 feet in the top of the Nacatosh sand, but later made a good test for gas. The well is located in the northeast corner of the southwest quarter of the northwest quarter of Section 10-14-20.

The well was completed for a giant gasser in the top of the Nacatosh sand. The flow has been gauged at 41,000,000 cubic feet of gas per day. The gas well is being used to operate other drilling rigs in the vicinity and it has been reported that the surplus gas production will be sold to the Arkansas-Louisiana Gas Company.

Both of the new producers are offsets to the discovery well, the Groves No. 2 being a west offset to the discovery well and the Groves No. 3 being a southwest offset to the discovery test.

Another test expected to be completed in a short time is the C. C. Fincher No. 1 of Benedum & Trees, also located in Section 10-14-20. The test encountered the top of the Nacatosh sand at 1,218 feet and 19 feet of oil-saturated sand were cored in the test.

A drill stem test was made Thursday and a showing of oil was obtained along with an estimated daily production of 50,000,000 cubic feet of gas. Operators were expected to set casing for final testing in a few days unless decision is made to core deeper in search for a better oil saturation.

The test is located in northwest corner of the southwest quarter of the northeast quarter of Section 10-14-20.

Glasco Operations.

L. M. Glasco of Tyler, Tex., cored 14 feet of well saturated oil sand at 1,232 feet in his Ritchie No. 1 test a quarter of a mile southeast of the discovery well in Section 10-14-20. The showing in the cores is said to be the best yet obtained in a well in the area and it is expected that casing will be set soon for final testing. The test is located in the center of the northwest quarter of the northwest quarter of the southeast quarter of Section 10-14-20.

Mickey McDonald and associates are nearing the Nacatosh sand in their William Haynie No. 1 test in Section 5-14-20, one and three-quarter miles northwest of the discovery well. The test is drilling around 1,200 feet and is expected to be coring in the Nacatosh sand area early this week. It is located in the southwest corner of the southwest quarter of the northeast quarter of Section 5-14-20.

Another test expected to reach the Nacatosh sand in a few days is the Lilly Block No. 1 test of Benedum & Trees, in Section 9-14-20. The test is drilling around 1,000 feet. The test is located in the northeast corner of the northeast quarter of the southeast quarter of Section 9-14-20.

With the exception of the discovery well, all of the tests thus far completed are producing from the Nacatosh sand below 1,200 feet. The discovery well, the Groves Land and Timber Company No. 1 of Benedum & Trees is producing from the Tokyo sand at the 2,200-foot level. The well is producing about 500 barrels of oil per day on the pump. The test is located in the north half of the southeast quarter of the northwest quarter of Section 10-14-20.

Permits have been issued for three additional tests in the area, all to L. M. Glasco of Tyler, Tex. The permits are for the Ritchie No. 2, located in the center of the northeast quarter of the northwest quarter of the southeast quarter of Section 10-14-20; the Ritchie No. 3, located in the center of the southwest quarter of the northwest quarter of the southeast quarter of Section 10-14-20, and the Ritchie No. 4, located in the center of the southeast quarter of the northwest quarter of the southeast quarter of Section 10-14-20. Glasco is not expected to start operations on any of his other tests until the Ritchie No. 1 test is completed.

Fincher Well May Be Best In New Field

Delusoriat 12-8-36
Rapid Development in Nevada and Southwest Ouachita Likely.

Camden — Following a drill stem test of the C. C. Fincher No. 1 of Benedum and Trees, in the Nevada field today, casing was ordered set at 2,147 feet and indications point to the best producer in this field, making the third since the field came in.

A rich oil sand was struck at 2,100 feet. This is the Tokyo sand, production level of the Groves No. 1, of this same company. It was penetrated for several feet. When the drill stem test was made, it was said that 1,300 feet of oil was standing in the hole.

A complete test will be made within a few days when the plug is drilled.

The Groves No. 3, in section 10-14-20, the same as the Fincher and other Groves Land and Timber Company wells of the Benedum and Trees Company, was making 1,000 barrels a day on the pump. This well was placed on the beam this week and pumping equipment installed. The oil, a heavy crude known as "road oil" is being pumped into earthen storage.

The Groves No. 2, continues to make gas at the rate of over 40,000,000 cubic feet a day.

Oil men say that the Fincher well will make a better producer than the discovery well, the Groves No. 1. The discovery well was brought in at about 2,000 feet in the Tokyo sand whereas the Groves No. 3 and also the gasser, are both in the Nacatosh sand at 1,200 feet.

Col. Glasco has set casing in his Ritchie No. 1, in this same section, and 19 feet of oil sand was cored at 1,200 feet in the Nacatosh formation. The plug will be drilled within a few days.

Locations have been made for the Groves Nos. 4, 5 and 6, of Benedum and Trees, all in section 10. Derricks are up for tests Nos. 4, and 5, and these will be spudded in within a few days.

Coring will start soon in the Lilly Block No. 1, in section 9, of Benedum and Trees. This well is nearing the Nacatosh sand.

Work on the Mickey McDonald et al. W. Haynie No. 1, in section 5-14-20, has been held up, pending clearing of titles.

The Standard Oil Company has purchased 1,100 acres in section 5, north of the discovery well, according to reliable information here today. Other major companies have secured acreage northeast of the Nevada field in sections 14-20, Nevada county and 14-19, Ouachita county. An intensive drilling campaign is contemplated in this area. Seismograph crews are busy "shooting" this territory and many new locations are expected soon.

Another Oil Producer In Nevada Field

12-9-36

Special to the Gazette.

Camden, Dec. 8.—Another producer for the growing Nevada field was assured today when a drill stem test in the C. C. Fincher No. 1 of the Benedum & Trees in section 10-14-20 showed 1,300-feet of oil in the hole. Casing was ordered set. The well is the fourth of the Benedum & Trees to become either an oil producer or a gasser.

Oil sand was struck at 2,147 feet and after coring in several feet of pay dirt, a drill stem test was ordered. This is the Tokyo sand, same level as the discovery well, the Groves Land and Timber Company No. 1, which is producing at the rate of 500 barrels daily on the pump.

Two Producing Sands.

The second producer is the Groves No. 3 which is producing 1,000 barrels of heavy crude a day on the pump. It is at a lower level of 1,200 feet in the Nacatosh sand, giving this field two producing sands, an unusual feature.

Pumping equipment was installed this week.

The third well is the Groves No. 2, 40,000,000 cubic feet gasser. It is producing from Nacatosh sand at 1,200 feet. Benedum & Trees own both these wells as well as the discovery well. Derricks have been built by the company for the Groves No. 4 and 5, and location has been made for Groves No. 6.

Casing has been set in the Ritchie No. 1 of Col Glasco in 10-14-20. Favorable structure was found at 1,200 feet, coring will start soon in the Lilly Block No. 1 in section 9 of the Benedum & Trees. Mickey McDonald et al. have held up work on the W. Haynie No. 1 in section 5 because of land titles.

It was reported here today that the Standard Oil Company had purchased 1,100 acres north of the discovery well, and other major companies were seeking locations in Nevada and Ouachita counties.

Another Producer Seems Assured In Nevada Field.

Special to the Gazette. *12-12-36*

Camden, Dec. 11.—Another producer for the fast growing Nevada county field seems assured with the favorable showing of the Ritchie No. 1, drilled by Colonel Glasco in section 10-14-20.

The plug was drilled yesterday after casing had been set at 1,217 feet. Nineteen feet of oil sand was penetrated, and when the well is completed, it will be placed on the pump. Installation of pumping equipment was started today. This is a heavy crude similar to that in the Groves No. 3.

Oil men say the Glasco test seems destined to be as good if not better than any well in the new field. Glasco plans to move the derrick over and sink an offset test to his Ritchie No. 1. The second test will be deeper, and an effort will be made to pick up the Tokyo sand at the 2,200-foot level. The Ritchie No. 1 is producing in the Nacatosh sand at the shallow level where the Groves No. 3 and the Groves No. 3 gasser are producing.

The Benedum & Trees plan to sink three more wells and several major companies are said to be planning an extensive drilling campaign. The Lilly Block No. 1 of Benedum & Trees is near the coring stage in the Nacatosh sand.

The shallow Troy field of Nevada county, four miles southeast of the old Irma field, continues to be the most active area in Arkansas at present, and last week added its second oil well when Benedum and Trees Oil Company's No. 3 Groves, section 10-14-20, showed over 175 barrels daily, pumping at 1,243 feet, free of water. The gravity is 14.8 Beaume No. 1, Fincher of Benedum and Trees has hit the Nacatosh just below 1,200 feet and is waiting for cement to set in casing after a satisfactory drill test.

Correction of location was filed by Benedum & Trees for the Groves Land and Timber Company No. 2. The new location is 330 feet north and 330 feet west of the southeast corner of the northwest quarter of the northwest quarter of section 10-14-20 in Nevada county. *12-11-36*

Much Activity in Progress In New Nevada County Oil Field.

12-16-36

Special to the Gazette.

El Dorado, Dec. 15.—With four producing wells completed, two others being drilled and rigging nearing completion on a seventh, Benedum and Trees, drillers of the discovery well in the new Nevada county field near Troy, have obtained permits for five additional wells in the area.

Another operator in the area has completed a producer and has permits for three additional tests. Still another operator is nearing the Nacatosh sand in another test.

Two of the Benedum and Trees producers are from the Tokyo sand at the 2,200-foot level. Two, one of them a gasser, are from the Nacatosh sand at the 1,200-foot level. The Groves No. 1 and the Fincher No. 1 of Benedum and Trees are producing 500 and 800 barrels of oil, respectively, from the Tokyo sand. The Groves No. 2 test is producing 800 barrels of oil per day from the Nacatosh sand. The Groves No. 3 test is producing about 40,000,000 cubic feet of gas daily from the Nacatosh sand.

L. M. Glasco of Tyler, Tex., has completed his Ritchie No. 1 test for a 1,000-barrel producer in the Nacatosh sand and has permits for the Ritchie No. 2, No. 3 and No. 4. He plans to start operations on the Ritchie No. 2 soon.

Mickey McDonald and associates are drilling near the Nacatosh sand in their William Haynie No. 1 test in Section 5-14-20. Benedum and Trees are nearing the sand in their Lilly block No. 1 test in Section 9-14-20. These two tests are the only ones in the new area not in Section 10-14-20. Benedum and Trees are reported to be drilling on their Groves No. 4 test. Rigging-up is in progress on the Groves No. 5.

The five new permits issued this week to Benedum and Trees were for the Groves No. 6, Groves No. 7, Groves No. 8, Groves No. 9 and the Fincher No. 2.

Another Oil Producer In Nevada Field

Special to the Gazette. *12-9-36*

Camden, Dec. 8.—Another producer for the growing Nevada field was assured today when a drill stem test in the C. C. Fincher No. 1 of the Benedum & Trees in section 10-14-20 showed 1,300-feet of oil in the hole. Casing was ordered set. The well is the fourth of the Benedum & Trees to become either an oil producer or a gasser.

Oil sand was struck at 2,147 feet and after coring in several feet of pay dirt, a drill stem test was ordered. This is the Tokyo sand, same level as the discovery well, the Groves Land and Timber Company No. 1, which is producing at the rate of 500 barrels daily on the pump.

Two Producing Sands.

The second producer is the Groves No. 3 which is producing 1,000 barrels of heavy crude a day on the pump. It is at a lower level of 1,200 feet in the Nacatosh sand, giving this field two producing sands, an unusual feature. Pumping equipment was installed this week.

The third well is the Groves No. 2, 40,000,000 cubic feet gasser. It is producing from Nacatosh sand at 1,200 feet. Benedum & Trees own both these wells as well as the discovery well. Derricks have been built by the company for the Groves No. 4 and 5, and location has been made for Groves No. 6.

Casing has been set in the Ritchie No. 1 of Col Glasco in 10-14-20. Favorable structure was found at 1,200 feet, coring will start soon in the Lilly Block No. 1 in section 9 of the Benedum & Trees. Mickey McDonald et al. have held up work on the W. Haynie No. 1 in section 5 because of land titles.

It was reported here today that the Standard Oil Company had purchased 1,100 acres north of the discovery well, and other major companies were seeking locations in Nevada and Ouachita counties.

Another Producer Seems Assured In Nevada Field.

Special to the Gazette. *12-12-36*

Camden, Dec. 11.—Another producer for the fast growing Nevada county field seems assured with the favorable showing of the Ritchie No. 1, drilled by Colonel Glasco in section 10-14-20.

The plug was drilled yesterday after casing had been set at 1,217 feet. Nineteen feet of oil sand was penetrated, and when the well is completed, it will be placed on the pump. Installation of pumping equipment was started today. This is a heavy crude similar to that in the Groves No. 3.

Oil men say the Glasco test seems destined to be as good if not better than any well in the new field. Glasco plans to move the derrick over and sink an offset test to his Ritchie No. 1. The second test will be deeper, and an effort will be made to pick up the Tokyo sand at the 2,200-foot level. The Ritchie No. 1 is producing in the Nacatosh sand at the shallow level where the Groves No. 3 and the Groves No. 3 gasser are producing.

The Benedum & Trees plan to sink three more wells and several major companies are said to be planning an extensive drilling campaign. The Lilly Block No. 1 of Benedum & Trees is near the coring stage in the Nacatosh sand.

New Nevada Well Making 500 Barrels

12-17-36

Special to the Gazette.

Camden, Dec. 16.—The C. C. Fincher No. 1 of the Benedum-Trees, in Section 10-14-20, Nevada county, began to flow today. The well was making 500 barrels daily of 20 gravity oil under its own pressure. Pumping equipment has arrived and will be installed. The well should be good for at least 1,000 barrels on the beam, oil men say. The new gas pressure which caused the 2,200-foot level producer to flow will mean more drilling, it is believed.

The well is producing from the deep sand, or Tokyo level. It is the same level as the discovery well of this company, the Groves No. 1. The Groves No. 3 is producing from the Nacatosh sand at 1,200 feet while the Groves No. 3 is a gasser. Drilling is under way on the Groves 4 and 5, and permits have been issued for four more tests on the Groves Land and Timber Company tract and one for this same company on the Fincher lease.

To Seek Deep Sand.

The Lilly Block No. 1 of this company was spudded in last night, and the deep sand will be sought. It is in Section 9-14-20. Mickey McDonald will be ready to test his W. Haynie No. 1 in Section 4-14-20 soon.

Colonel Glasco, after getting a producer in his Ritchie No. 1, said today he would sink a deep test as an offset and would use a 120-foot derrick and

rig. He plans two tests on each of his four locations on the Ritchie tract.

It was said today that the Lion Oil Company planned to drill in Section 6-14-19, Ouachita county. Other major companies are checking seismograph crews and tests in this area, and much "shooting" is being done from the old Gaughan well, five miles west of Camden, to the Nevada county line.

To date the wells either drilled or being drilled in the Nevada field are as follows:

Nine on the Groves Land and Timber Company tract, three on the Fincher tract, four on the Ritchie lease, one on Lilly Block land, and one on the William Haynie block. Of this number, five are producers.

Two sands are producing oil, one at the shallow depth of 1,200 feet in the Nacatosh and the other at 2,200 feet in the Tokyo.

Four Oil Producers In Nevada Field

Dec 20, 1936 yag

Special to the Gazette.

El Dorado, Dec. 19.—The first flowing well in the new Nevada county field was completed this week when the Fincher No. 1 test of Benedum & Trees, began flowing approximately 500 barrels of oil per day through nine and five-eighths inch tubing. The well, located in section 19-14-20 is the third oil producer completed by Benedum & Trees in that section. Another well has been completed by the same producers for a giant gasser, and L. M. Glasco of Tyler, Tex., has completed one well for an oil producer.

Of the four oil producers completed, two are producing from the Nacatosh sand at 1,200 feet and two from the Tokyo sand at 2,200 feet. The gas well was completed from the Nacatosh sand. The Fincher producer of Benedum & Trees was completed from a depth of around 2,200 feet, with casing set at 2,142 feet. Plug was drilled last week and tubing run in the hole. The well started flowing Wednesday. It has been estimated that the well would produce about 1,000 to 1,200 barrels per day on the beam. The test made a good gas showing in the Nacatosh sand.

The other producer of Benedum & Trees in the Tokyo sand is the Groves Land and Timber Company No. 1, the discovery well in the new area, which is producing about 350 to 400 barrels of oil per day on the beam. The well is located in the north half of the southeast quarter of the northwest quarter of section 10-14-20.

Nacatosh Producers.

One of the two producers in the Nacatosh sand is the Groves Land and Timber Company No. 3 of Benedum & Trees, located in the southwest quarter of the southeast quarter of the northwest quarter of section 10-14-20. The well is producing 350 to 400 barrels of oil per day on the beam from a depth of 1,225 feet.

The other Nacatosh sand producer is the Ritchie No. 1 of L. M. Glasco of Tyler, Tex., which is producing about 300 barrels of oil per day on the beam from a depth of 1,271 feet. The test is located in the center of the northwest quarter of the northwest quarter of the southeast quarter of section 10-14-20.

The gas well is the Groves Land and Timber Company No. 2 of Benedum & Trees, which is producing about 40,000,000 cubic feet per day from the Nacatosh sand. The test is located in northeast corner of the southwest quarter of the northwest quarter of section 10-14-20.

Benedum & Trees are drilling ahead on the Groves Land and Timber Company No. 4 test located in the southeast corner of the southwest quarter of the northwest quarter of section 10-14-20. Derrick is being erected for the Groves Land and Timber Company No. 5, located in the northeast corner of the southwest quarter of the northwest quarter of section 10-14-20.

The same company is also rigging up for the C. C. Fincher No. 2 test in the southwest corner of the southwest quarter of the northeast quarter of section 10-14-20, for which permit was issued this week.

Benedum & Trees are drilling ahead on the Lilly Block No. 1 test in section 9-14-20, which is to be drilled to the deeper sand. The test is located in the northeast corner of the northeast quarter of the southeast quarter of the section.

New Glasco Operations.

Glasco is preparing to start drilling operations on his Ritchie No. 2 test in the center of the northeast quarter of the northwest quarter of the southeast quarter of section 10-14-20. He is reported to be planning a deep test and has erected a 120-foot derrick.

Mickey McDonald and associates are drilling ahead below surface casing in their William Haynie No. 1, after skidding derrick to a new location. The test is located in the southwest corner of the southwest quarter of the northeast quarter of section 5-14-20.

The Haynie test and the Block test are the only ones in the new area not located in section 10-14-20.

Glasco has permits for two more tests on his lease and is expected to start work on them soon. They are the Ritchie No. 3, located in the center of the southwest quarter of the northwest quarter of the southeast quarter of section 10-14-20 and the Ritchie No. 4, located in the center of the southeast quarter of the southeast quarter of section 10-14-20.

Benedum & Trees this week obtained permits for four additional tests to be drilled on the Groves Land and Timber Company lease.

NEVADA COUNTY SEEMS TO HAVE REAL OIL FIELD

Prescott Flourishes as Result.

By WILLIAM A. WILSON.

(State News Editor of the Gazette.)

Prescott, Dec. 19.—If there isn't a Santa Claus, then the people of Prescott and Nevada county are badly fooled.

Less than a month before Christmas there has been discovered in the southeastern section of the county what appears to be a great oil field. Already five or six wells are producing oil and another is producing gas sufficient to supply the entire oil field.

Drillers, lease owners and others connected with the drilling operations first will call your attention to the fact that already two distinct oil-producing sands have been found and a third is expected to be "unearthed" before the year ends.

These sands are at a shallow depth, making drilling less expensive. The Nacatosh sand is found at an average depth of 1,150 feet, while the Woodbine or Tokio sand is at a depth of about 2,240 feet. The Nacatosh sand produces oil of 14 gravity, while the Tokio sand produces oil of 20.4 gravity.

The mere fact that oil has been found in Nevada county to some people isn't news, because they have been pumping the liquid gold for more than 15 years. There are 85 wells producing oil in the old Irma field, also known as the "Waterloo field." But the production is not sufficient to cause excitement. Those wells are making from 10 to 25 barrels daily. However, the cost of production is so great that "big time" operators have passed up the field.

Prescott and Nevada County Enjoying Prosperity.

But now that the new field has been discovered, where wells are producing from 500 barrels upward every 24 hours, there is real excitement in Prescott and Nevada county. If you will spend a few hours in this town, you will sense a revolution among business men, bankers and the "common folks." While President Roosevelt's New Deal undoubtedly had considerable to do with the feeling of prosperity here, still the new discovery is getting the credit right now.

If you want a ditch dug, or a fence repaired or even a home built, you will have to start out early to find laborers to do the work. They are all out at the oil field "making big money." Presidents of the two Prescott banks and the one at Emmett told your correspondent that deposits have increased appreciably since the new field was discovered three weeks ago.

The old Prescott Chamber of Commerce has been reorganized, with leading business and professional men as officers and directors, in anticipation of an oil boom which they believe will attract attention of the entire nation. Officers of the Prescott Chamber of Commerce requested us to announce that they were looking for a "wide awake" secretary. Practically every business and professional man in Prescott is a member of the organization.

Officers of the new organization are: President, Dan Pittman, president of the Prescott Hardware Co.; vice president, William F. Denman; directors, Thomas J. Compton; Thomas C. McRae, president of the Bank of Prescott; J. M. Stripling, merchant; L. L. Mitchell, lawyer; C. G. Gordon, druggist, and T. M. Bemis, capitalist.

Another indication of a revival of

business here will be found at the courthouse. The circuit clerk's office is a beehive of activity. That's due to the recording of leases, royalties and other documents which has increased to such an extent that more than a dozen extra clerks have been required to keep up with the work. Lawyers who have been in desperate need of clients, now have about all they can take care of. The two abstract officers in Prescott are far behind with their work, although they have employed extra help. Hotels are crowded to capacity.

New Oil Field Humming With Activity.

But let's return to the new oil field.

Your correspondent was present when L. M. Glasco, a young oil operator with wells in Texas and Oklahoma, completed his Ritchie No. 1 well at 1,271 feet. It is in section 10-14-20. He immediately started preparations for an off-set, and plans to drill two others.

William F. Denman, Prescott lawyer and bank president, who perhaps has more acreage under lease than any other individual in the new field, said that he would spud in his first well Monday. He owns five producing wells in the old Waterloo field.

The Mickey McDonald well, reported several weeks ago to be in the sand, set surface casing only yesterday and drilling will be started tomorrow. It is in Section 5-12-20. The Lilly Block well, in 9-14-20, was coring the Nacatosh sand today.

Several other wells are drilling, and everywhere you see rigs going up in preparation for further tests. Everybody expects to strike oil—you won't find a single pessimist in the field. Since the discovery well was brought in, there have been no dry holes, we were told.

Great Things Expected Of The New Year.

"Just wait until after the first of the year," a business man told your correspondent, "and you'll see the greatest drilling activity in the history of the oil business. There's a difference in getting a big oil well in Arkansas and in some other state, particularly Texas. For instance, in Texas they put you on a porata basis—that is, they limit your production. If you bring in a thousand-barrel well, that doesn't mean that you are going to produce a thousand barrels of oil every day. You are limited to 20 or 30 barrels or the amount specified by the state's Conservation Department. In Arkansas, when you bring in a thousand-barreler, you've got a thousand barrels of oil every 24 hours, because there's no limit in production in this state.

"Nearly every big oil company in the country has holdings in Nevada county, and we expect all of them to come here early next year and start drilling. The fact that our sands are at a shallow depth is unusually attractive to them. That makes the cost of drilling much less than in the deep sand fields. We can drill wells more quickly and the

cost of casing and other necessities is much less."

Correspondent Convinced As He Tours the Field.

With a party of Prescott business men, your correspondent drove over much of the new field. To a layman, we must admit that it looks like Nevada county is all set for a prosperous New Year. Great earthen tanks have been thrown up everywhere to catch the flowing oil. There are a few steel tanks or reservoirs. But it requires time to erect steel reservoirs, and the new field still is in its infancy.

Another thing your correspondent observed which reminded him of the early boom days of the El Dorado and Stephens oil fields, was the many shacks going up. Most of them are for use as bunk houses, tool sheds and the like, but two or three "stores" were going up. The field is full of roustabouts and roughnecks, but the camp followers—women who always are to be found at such places when "things get going good," haven't arrived yet.

Speaking of shacks, your correspondent was invited to have luncheon at the shack of L. M. Glasco and his brother, Byron Glasco, his production superintendent. It was a sort of two-by-four building thrown together hurriedly. The menu included squirrel, sausage, pork chops, "sow belly," beans, macaroni, sweet potatoes, cream gravy, sorghum molasses, light bread, hot rolls, corn bread and coffee. Bobo, the cook, told us there was "plenty left" after the dozen or more guests had left the table. And he apologized for

ing quail, which he said was an almost daily item on the menu!

Nevada County Has Other Things of Which to Be Proud.

Returning to Prescott, which is only about 15 miles from the new field—as the crow flies—your correspondent stopped at two manufacturing plants of which all Prescott and Nevada county are proud. They were those of the Bird & Son, Inc., manufacturers of asphalt and other articles made from crude oil, and the Williams Roofing Co., makers of composition roofing. Headquarters of the Williams company is in Little Rock.

Both plants are running full time and with full crews. They have large pay rolls, and officials of the two companies said that most of the money is spent in Prescott.

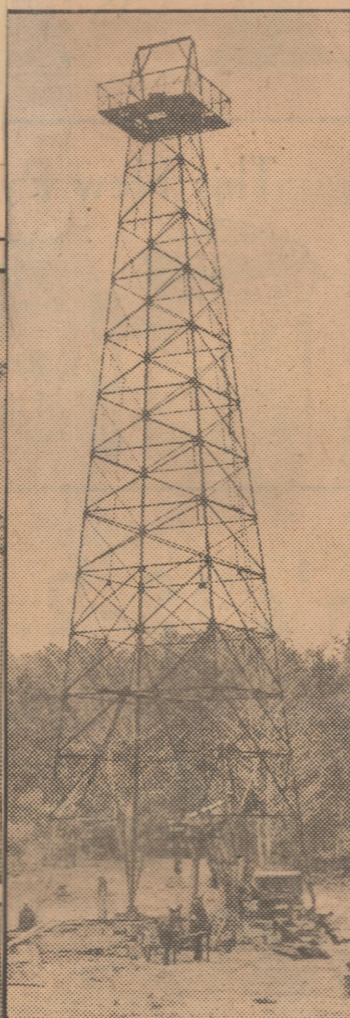
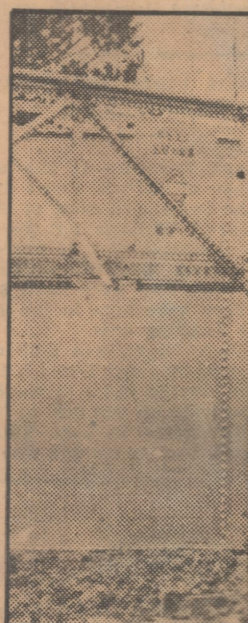
Business men of Prescott are jealous of their oil fields. They don't like to read articles about "our oil fields" in the newspapers with date lines from other cities. They expect soon to have a central agency established to which all drilling activities will be reported daily, and this information will be given to the newspapers—with Prescott date lines.

BUSINESS AND PLEASURE



Here's a group of happy warriors, having just partaken of a sumptuous repast prepared by the darker figure in the photograph, known as Bobo, in the new Prescott oil field. From left to right are the Gazette's correspondent, L. M. Glasco, who brought in a well Friday afternoon; William F. Denman Jr., George R. Gordon, Ouachita county judge; William F. Denman, lawyer and president of a Prescott bank and owner of several blocks of acreage in the oil field; Byron Glasco, production superintendent for his brother, L. M. Glasco, and Thomas J. Corbett, Prescott manager of the Arkansas Louisiana Gas Co. and a director of the Prescott Chamber of Commerce.

IMING NEW OIL DISTRICT



—Gazette Staff Photo.
Here is the C. C. Fincher No. 1 well on the Benedum & Trees lease. It is pumping about 1,200 barrels daily.



Top—These steel reservoirs on the Benedum & Trees lease are receiving oil from the C. C. Fincher No. 1 well, completed the past week. The well is making about 1,200 barrels daily from the Tokio sand at 2,248 feet. Until pipe lines have been laid to the field, the oil will be trucked to Prescott.

Below is a group unique in oil drilling history—a drilling crew composed of father and sons. The father in this instance is the contractor, who doesn't receive a salary. The crew is composed of five men—the driller, pot fireman, pipe racker, derricks worker and "roughneck." The crew works on an eight-hour basis and receives \$85 a day. There are three crews to a well, keeping the operations going 24 hours a day. In this picture are E. O. Olds, contractor; C. W. Olds, "roughneck"; B. G. Olds, pipe racker; J. E. Olds, pot fireman; G. G. Olds, derrick worker, and R. M. Olds, driller. Three other Olds brothers are serving apprenticeships as "roughnecks," W. H., B. O. and J. L. Olds.

Jan 12-20-36
Permits Issued. 11-29-35
 Four drilling permits were issued by the state Conservation Department along with three permits to plug and abandon tests. Log of one well was filed. Three of the drilling permits were for tests in Nevada county, two for Benedum & Trees and one for John R. Lewis and the other was to the Root Petroleum Company.

The Lewis permit was for the William Haynie No. 1 located 330 feet north and 330 feet east of the southwest corner of the northwest quarter of the northeast quarter of section 5-14-20 in Nevada county.

The Benedum & Trees tests were for the Lilly Block No. 1 located 330 feet south and 330 feet west of the northeast corner of the southeast quarter of section 9-14-20 in Nevada county and the C. C. Fincher No. 1 located 330 feet south and 330 feet east of the northwest corner of the southwest quarter of the northeast quarter of section 5-14-20 in Nevada county.

The completion expected this week in the Nevada county field is the Groves Land and Timber Company No. 3 of Benedum & Trees located in the southwest corner of the southeast quarter of the northwest quarter of section 10-14-20, a southwest offset to the Groves No. 1 discovery well.

The well logged top of the Nacatosh sand at 1,217 feet and was bottomed at 1,231 feet. On a one-hour drill stem test the well showed 500 feet of 13 gravity oil. Operators set casing last week and plans were made to drill plug and complete the well this week-end.

West Off-set Due.

Another test in the same sector expected to reach the interesting stage

this week-end is the Groves Land and Timber Company No. 2 test, a west off-set to the discovery well.

Operators are nearing the Nacatosh sand below 1,200 feet and are expected to begin coring in the sand in a few days. The test is located in the northeast corner of the southwest quarter of the northwest quarter of section 10-14-20.

The producing well in the area is the Groves No. 1 well of Benedum & Trees, located in the north half of the southeast quarter of the northwest quarter of section 10-14-20. The discovery well is producing about 500 barrels per day of low gravity oil from the Tokyo sand at 2,287 feet. The discovery well tested gas but no oil in the Nacatosh sand. Oil from the No. 1 well is being sold by the producers to the Berry Asphalt Company at Waterloo.

Drilling operations are expected to get under way soon on four other tests in the Nevada county area. Two of the tests are wells of Benedum & Trees, one of L. M. Glasco of Tyler, Tex., and the other a test of John R. Lewis of Fort Morgan. Col. Glasco has permits for three additional wells but has not yet started rigging-up operations. The other two tests of Benedum & Trees are the L. Block No. 1 in the northeast corner of the northeast quarter of the southeast quarter of section 9-14-20 and the C. C. Fincher No. 1 in the northwest corner of the southwest quarter of the northeast quarter of section 10-14-20.

Rigging up has been completed on the Fincher test and drilling is expected to be started in a short time. Rigging up is nearing completion on the Block test and drilling is expected to be started this week.

Lewis has erected derrick on his William Haynie No. 1 test in the southwest corner of the southwest quarter of the northeast quarter of section 5-14-20 and rigging up is expected to be rushed to completion this week.

Glasco Operations.

Glasco is reported to have completed rigging up operations on his Ritchie No. 1 test in the center of the northwest quarter of the northwest quarter of the southeast quarter of section 10-14-20 and is expected to start drilling operations soon.

Glasco has permits for three other tests in the same area but has not started operations as yet.

His other three permits are for the Ritchie No. 2, located in the center of the northeast quarter of the northwest quarter of the southeast quarter of section 10-14-20; the Ritchie No. 3, located in the center of the southwest quarter of the northwest quarter of the southeast quarter of section 10-14-20; and the Ritchie No. 4 located in the center of the southeast quarter of the northwest quarter of the southeast quarter of section 10-14-20.

The completed producer in the Nevada county sector is from a different sand than production in the Waterloo field to the northwest. Production in the Waterloo area is from the Nacatosh sand. Completion of new wells in the Nacatosh sand in the new area will extend the production and the discovery well in the Tokyo sand gives production from two sands in the county.

With the new activity in Nevada county considerable lease trading has been under way and several major companies as well as some of the larger independent producers are reported to have purchased large blocks of leases and more drilling activity is expected to get under way.

New Glasco Test Started.

L. M. Glasco of Tyler, Tex., is erecting derrick on his Ritchie No. 2 test in the center of the northeast quarter of the northwest quarter of the southeast quarter of section 10-14-20, and will begin drilling next week. It is reported this test also will pass up the Nacatosh sand for a larger producer in the Tokio. Glasco has obtained permits for his Nos. 3 and 4 tests on the Ritchie lease in the same section.

A test of unusual interest to speculators and producers is that of the C. B. & F. Petroleum Company, a local corporation, drilling its William Haynie No. 1 on the John R. Lewis lease in the southwest corner of the southwest quarter of the northeast quarter of section 5-14-20, a half mile east of production in the old Irma, or Waterloo, field, and 1 3-4 miles northwest from the Benedum & Trees discovery well in the north half of the southeast quarter of the

northwest quarter of section 10-14-20. If this test is a producer it means the widening of the Waterloo field and indications of the truth of the assertion that the new field is merely a continuation of the old.

On Christmas Eve 80 feet of drill stem was broken off in the hole but the fishing job was easy and on Christmas Day the cap rock was punctured and a core of the Nacatosh sand removed with excellent showings of oil. The test will be bottomed at about 1,180 feet, the average for the Waterloo field, and the test will be drilled in next week.

The new field's big gasser, Groves Land and Timber Company No. 2 of Benedum & Trees, located in the northeast corner of the southwest quarter of the northwest quarter of section 10-14-20, continues to produce about 40,000,000 cubic feet a day, and furnishes fuel for operations of that company.

John G. Wooten was setting casing today in his Z. T. Sparkman No. 1 test just across Little Missouri river from Nevada county, two miles south of Whelen Springs. This test is bottomed at 560 feet, just four feet in the Nacatosh sand. A core from the test this week, the driller and scouts said, contained rich oil showings. The test will be drilled in about New Year's. The hole is in the northwest quarter of the northwest quarter of the northwest quarter of section 1-11-20, and is 18 miles due north of the Waterloo field.

To Drill Near Rosston.

E. C. Holmes, trustee, practically has completed his block for a test to be drilled near Rosston, in the center of Nevada county, either in Section 29 or 30-13-21, about three miles northwest of production in the Waterloo field.

Shooting crews have been active making shots in this territory, and it is reported two major companies soon will make locations for tests. Anderson and associates are making progress in their block for a test in the Sutton community, in Township 13, range 22, approximately eight miles northwest of production. J. B. Yates and associates are blocking acreage for a test to be drilled in the old Mt. Moriah territory, in Township 13, range 21, approximately seven miles northwest of production. Root Refining Company test in Section 16-13-23, just over the line in Hempstead county, is drilling around 2,500 feet in a deep test, and the largest traffic in leases and royalty in Nevada county at this time is in the neighborhood of this test.

Mid-West Telephone Company of Prescott has completed the installation of a first class telephone line into the new Nevada county field, and county and city forces this week have spread gravel in the worst parts of the road from the new field to Waterloo. The road is in good condition to meet the demand of heavy traffic.

Dem 12-20-36
 Benedum and Trees Oil Company announced five new locations for the new Troy Shallow field. Nevada county, the new tests being Nos. 7 to 10, inclusive. Groves Land and Timber Company, and No. 2 C. C. Fincher, all in section 10-14-20, where this company now has two shallow oil wells, a gasser and another ready to pump.

Nevada County Test Makes Good Showing

Dem 12-27-36
 Prescott—John R. Lewis and associates drilling on the Haynie tract, in section 5-14-20, Nevada county, took a core Friday with a reported showing of oil. The oil showing was made in a core taken from the Nacatosh sand at a depth of 1,170 feet. This well is about 17 miles from Prescott and, if brought in, will give the new field another extension of several miles.

Two Nevada Field Wells On Pumps

Gazette 12-27-36

Special to the Gazette.

Prescott, Dec. 26.—Two new oil producers in the Nevada county field were placed on the pumps this week.

The Glasco No. 1, on the Ritchie lease, located in the center of the northwest quarter of the northwest quarter of the southeast quarter of section 10-14-20, completed last week at a depth of 1,271 feet, was placed on the beam Sunday and is producing 250 barrels of oil a day from the Nacatosh sand.

The Fincher No. 1 of Benedum & Trees, in Section 19-14-20, the first well to flow in the field, has been on the pump a week and is producing 1,040 barrels of oil a day from the Tokio sand at a depth of 2,200 feet, the oil from the well being pumped into huge earthen tanks and hauled by trucks to the Berry asphalt plant at Waterloo.

Benedum & Trees, in their Lilly Block No. 1 test in the northeast corner of the northeast quarter of the southeast quarter of section 9-14-20, have passed up the Nacatosh sand at 1,270 feet and are drilling to the Tokio sand, although it is reported oil from the Nacatosh stood 500 feet in the hole.

Nevada County Electrified by Oil Discovery

Democrat 1-29-36

Prescott Has Boom; Residents Feel Era of Prosperity Here.

Prescott — People of Nevada county no longer are in doubt as to whether Lady Luck is smiling on them. They know she is.

Just as the excitement caused by the finding of oil in the old Waterloo field a few years back had died out, and residents had settled back in the same niche they had occupied before oil was found so close to them what appears to be a great oil field has been discovered almost at their door.

Already two producing sands have been found and drillers, lease owners and men who are familiar with oil field operations, say they feel sure another will be encountered soon.

The two sands now producing are at a shallow depth. The Nacatosh sand is found at 1,150 feet on the average, and the Woodbine, or Tokio, at about 2,240 feet. The Woodbine produces oil of 20.4 gravity and the Nacatosh produces oil of 14 gravity.

Prescott has gone through a period of awakening and re-organization, blossoming out with a new Chamber of Commerce composed of practically all the alert business and professional men of the city. The two hotels have capacity crowds every day.

Heretofore when a Prescott resident walked down the street he hailed every one he met by name. Now he is stopped by strangers who inquire the way to the postoffice, the abstract office, the courthouse and how far it is to the new oil field. Houses and apartments for rent in Prescott are as scarce as the proverbial hen's teeth. They are not to be found.

A Prescott resident who drove over a portion of Nevada county's new oil field was agreeably surprised at the activity found there. Numbers of buildings have "mushroomed" almost overnight. At the discovery well, owned by the Benedum and Trees Oil Company, eight new buildings had gone up. One was a powerhouse, another a warehouse, and the others were temporary quarters for the employees till a hotel and boarding house can be built in the new town they feel sure is coming.

Engines were running and a huge pump was working as the oil was being pumped into steel storage tanks.

The C. C. Fincher No. 1, on the Benedum & Trees lease, is pumping 1,200 barrels daily. The Glasco No. 1 was flowing into an earthen pit. Spaces were being cleared for new derricks to be erected. Carpenters were busy building tool sheds and small shacks that are typical of all oil fields.

Excitement and interest centered around the John R. Lewis and associates well, on the Haynie tract in section 5-14-20. This well is not completed. The crew had cored at a depth of 1,170 feet and reported a good oil showing in the Nacatosh sand.

All highways leading into the field were seething with traffic, including cars from many states. Faces peeped from tents erected by the side of the road. Heavy trucks loaded with oil field equipment lumbered by to new locations.

Several wells in the new field are now producing oil and another is producing gas sufficient to supply the entire field with fuel.

Fincher Is Best Well.

Camden — With two new wells placed on the pump in the Nevada county field, Christmas Week, activity in that area held the spotlight.

Producing 250 barrels of oil per day the Ritchie No. 1, of L. M. Glasco was added to the production list. The well was completed some days ago but was placed on the beam only recently. It is in section 10-14-20 and it is producing from the Nacatosh sand at the shallow level of 1,271 feet.

The best well in the field to date is the C. C. Fincher, No. 1, of Benedum and Trees. It is the first well to flow and was making 1,040 barrels a day from 2,200 feet producing in the second, or Tokio sand. This oil is being pumped into earthen storage tanks. Later it is hauled by trucks to an asphalt plant at Waterloo.

Seeking the second sand Benedum and Trees passed up the Nacatosh level in the Lilly block No. 1, section 9-14-20, and are going deeper. A good showing of the heavier oil was found at 1,200 feet.

Glasco plans a second Ritchie test in section 10-14-20. This will be a deep test. Glasco has permits for Ritchie No. 2, 3 and 4, in this same section and it is reported he plans two wells on each of his four locations.

Oil men are watching the William Haynie No. 1, in section 5-14-20, being drilled by the C. B. & F. Petroleum Corporation. This is on the John R. Lewis lease and it is a half mile east of production in the old Irma, or Waterloo field, and one and three-fourths miles northwest of the discovery well in the new field. If this becomes a producer the Waterloo field will be extended. A core was taken in the Nacatosh sand and there was a good showing of oil. A test will be made at 1,180 feet.

Other tests in this area holding interest are the Z. T. Sparkman No. 1, drilled by John G. Wooten, near the Little Missouri river, two miles south of Whelen Springs. The test is at 560 feet in the Nacatosh sand, and a core revealed a rich oil sand, according to the driller. The test will be drilled in this week. This well is in section 1-11-20 and is 18 miles north of the Waterloo field. E. C. Holmes, trustee, plans a test at Rosston, Nevada county, either in section 29 or 30-13-21, about three miles northwest of production in the Waterloo area.

Shooting crews continue active and seismograph tests are favorable. It is said two major companies plan to make locations in Ouachita and Nevada counties soon.

New Well In Waterloo Oil Field

Gazette 1-1-37

Special to the Gazette.

Prescott, Dec. 31.—Steele & Warrack's William Haynie No. 1, in the southeast quarter of southeast quarter of northwest quarter of section 6-14-20, in the Waterloo Field, Nevada county, was bailed in tonight, good for 200 barrels of oil a day on the pump. Casing was set at 1,178 feet. The hole is six feet in the Nacatosh sand.

This well is three miles from the Benedum & Trees discovery well in the new Nevada county field. Charles Steele, one of the owners, said tonight the well will be placed on the pump at once. Oil is standing 700 feet in the hole free of water.

New Well In Waterloo Oil Field

Jan 1, 1936
 Special to the Gazette.

Prescott, Dec. 31.—Steele & Warrack's William Haynie No. 1, in the southeast quarter of southeast quarter of northwest quarter of section 6-14-20, in the Waterloo Field, Nevada county, was bailed in tonight, good for 200 barrels of oil a day on the pump. Casing was set at 1,178 feet. The hole is six feet in the Nacatosh sand.

This well is three miles from the Benedum & Trees discovery well in the new Nevada county field. Charles Steele, one of the owners, said tonight the well will be placed on the pump at once. Oil is standing 700 feet in the hole free of water.

Crew Ready To Drill Plug Nevada Well Ready for Test; Weather Gives Field Setback.

Democrat 1-3-36
 Camden—Activity in the new Nevada county field, west of Camden, was resumed this week-end after a holiday lay-off of a few days, but pumping wells were ordered shut down until the rain slackened and highways became passable. Oil trucks have been unable to reach the wells and all storage facilities have been exhausted.

Earthen tanks, as well as steel tanks, are full of oil from the producers in this field and the eight trucks operating daily to the field were taken off.

It was reported today that eight new steel derricks were sent to the field for new locations.

The Groves No. 5 of the Benedum and Trees Corporation has delayed drilling of plug because of lack of storage space. This test is ready to be brought in.

The highlight of the past week was the completion of the William Haynie No. 1, section 5. This is in the old Waterloo field and is some distance from the new Nevada producing area. Greater drilling activity is expected in this section.

Nevada Well Estimated At 2,000 Barrels

Special to the Gazette.

Prescott, Jan. 4.—Blowing in just at dusk, the C. B. and F. Petroleum Company's William Haynie No. 1 on the John R. Lewis lease, in the southwest corner of southwest quarter of northeast quarter of section 5-14-20, in Nevada county, was running wild tonight with estimated 40,000,000 cubic foot gas pressure and forcing oil over the top of the 100-foot derrick.

Scouts estimated the oil flow at 2,000 barrels a day, by far the largest producer in the county. Operators will be unable to get the well under control before morning. Fear of explosions caused the extinguishing of all lights and fires near the well.

This test extends the old Waterloo field a half mile. It is two miles west of Benedum & Trees Oil Company discovery well in the new Nevada county field.

The bailer had made only three trips into the hole when strong gas pressure began blowing oil, water and mud from the well, and within an hour the hole was cleared of water and mud and the well tonight is the only one in the Nevada field to take on aspects of a gusher.

Clyde Cox, president of the company, estimated the well will be under control by noon tomorrow.

New Well Still Flowing Wild; Oil Flow Lessening.

Gazette 1-6-37

Special to the Gazette.

Prescott, Jan. 5.—The William Haynie No. 1 well of the C. F. and B. Petroleum Company, which blew in last night with heavy gas pressure and an estimated flow of 2,000 barrels of oil a day, still was running wild tonight. Operators are making every effort to cap the flow.

The flow is shooting above the 100-foot derrick, was said to consist principally of water with a small amount of oil. Many scouts and operators in the Nevada county field who have watched the well fear that the gas has dug the well so deep below the oil sand and into water sand that it cannot be made a profitable oil producer. They said that chances still are good for a large gasser. Failure of operators to place a safety or gate valve on the top of the casing was said to be the cause for the well flowing wild.

The well is located on the John Lewis lease in the southwest corner of the southwest quarter of the northeast quarter of section 5-15-20.

Will Lay Pipeline To New Nevada Field

Dem 1-10-37
 Prescott—The Berry Asphalt company of the Waterloo field in Nevada county has purchased a right-of-way for a pipe line from its refinery at Waterloo to the Benedum-Trees leases in the new field. This pipe line will be five miles in length. An eight-inch pipe will be used, buried 15 inches below the surface. The approximate cost will be \$40,000.

Operations Hampered by Bad Weather

Thorough Check of South Union County Prospects Under Way.

El Dorado—Heavy rains which made a number of roads almost impassable seriously hampered activities in the new Nevada county oil field and caused some delay in operations in the vicinity of El Dorado.

Chief interest centers in the Snow Hill sector where work is scheduled to start on two wells. Despite the bad weather the Lion Oil Refining Company is reported to have advanced to the rigging up stage on a new test to be drilled north of the first wells put down in that area, and the Phillips Petroleum Company is reported to have resumed work on the Rose well in section 28-15-15. The Rose well was drilled down almost to the lime formation below 4,000 feet, and it is understood that the company now plans a much deeper test.

The Lion Company also is reported going ahead with plans to drill deeper on the old Phillips test in the vicinity of Shuler, to the southwest of El Dorado. This well was drilled to around 5,000 feet and then abandoned.

The start of what is expected to be another extensive exploration program in search of new fields in Arkansas during the coming year was announced this week. This came with the possibility of oil play in the southeastern part of Union county and northern Union parish, La.

The Phillips Petroleum Company, with offices here, sent a seismograph crew into Huttig to start operations. Information from Huttig is that the crew, numbering 16 men, arrived with members of their families the first of the week. Operations were started at once and it is expected that they will continue for several months. The crew will "hoot" all of that part of Union county and also go across the Louisiana line into Union parish.

Much "shooting" work was carried on during 1936 by the Phillips, Lion, Root and other companies and indications are that such operations will be continued on a large scale.

Bad Weather Halts Oil Operations

Gazette, 1-24-37

Special to the Gazette.

Prescott, Jan. 23.—Continuous rain throughout the week not only halted work in the Nevada county oil field but made all roads in that section impassable. All wells ceased pumping as storage tanks and pits are full of oil and it has been impossible to haul oil to the refinery at Waterloo.

A crew of 40 men worked two days muddying in the eight inch pipe line for Berry Asphalt Company from their plant at Waterloo to the new field but high water forced a halt. Dewey T. Ross Engineering Company of Tyler, Tex., has the contract to lay this line which will be five miles long and will convey production of Benedum & Trees Company wells to the asphalt plant.

Lilly Block Well.

While no official announcement has been made of the result of drilling in Benedum & Trees Lilly Block No. 1 in the northeast corner of the northeast quarter of the southeast quarter of Section 9-14-20, rumor is persistent the bit has reached the Permian lime sand in the Travis Peak at a depth of 3,600 feet and that salt water has been encountered. This rumor has placed as great a damper on the spirits of scouts and speculators as has the unprecedented rainfall. The rumor is true, means tests will have to be drilled several hundred feet deeper if high gravity oil is to be found.

Casing was set last week in Benedum & Trees C. C. Fincher No. 2 located in the southwest quarter of the northeast quarter of Section 10-14-20 in the Nacatosh sand at a depth of 1,200 feet. Operators are confident of this test being an average producer for the new field as cores taken contained excellent oil showings. No effort will be made to bring the well in until better weather.

Charley Steel and Bryan Warmack have been unable to mix concrete for foundation for the pump for their William Haynie No. 1 in the southeast northwest quarter of Section 6-14-20, quarter of the southwest quarter of the on account of rainfall. This test was bailed in two weeks ago and it is estimated fluid stands 900 feet in the hole.

Benedum & Trees have obtained permit and announced location for their C. C. Fincher No. 3 test located in the center of the northeast quarter of the southwest quarter of the northeast quarter of Section 10-14-20. Derrick will be erected and drilling started as soon as weather permits.

Former county judge E. H. Weaver has sublet several lots of a ground lease obtained from Benedum & Trees in the new field for the construction of warehouses and stores. As soon as roads are passable he will begin hauling in lumber for the construction of houses and workmen.

Wildcat Spudded In.

Axel Larson of Minneapolis, as trustee, spudded in his test in wildcat territory three miles northwest of production in the Waterloo field, on the James T. Wortham tract in the southwest corner of the southwest quarter of the northwest quarter of Section 29-13-21. When rain halted operations the test was down about 1,000 feet. This test is one and a quarter miles due west of Rosston, former Nevada county seat. Robert S. Holmes has charge of operations and drilling there is causing considerable interest as the bit is close to the Nacatosh sand from which oil is produced in the proven territory.

John G. Wooten and associates were unable to reach their Z. T. Sparkman No. 1 test in the northwest quarter of northwest quarter of Section 1-11-20 in Clark county south of Whelen Springs just across the Nevada county line. It will be a week after the rainfall ceases before operations there can be continued. The hole is 560 feet deep with oil showing after several hours bailing not sufficient to warrant a producer. The operators intend drilling this test deeper as well as drilling two tests in Nevada county.

J. B. Yates has about completed blocking of acreage for a test in the Mt. Moriah-Laneburg community and expects to announce location next week.

Nevada Field Operations Are Resumed

One-Time Wild Gasser Is Released, Makes 200 Barrels Oil.

Prescott—Traffic is again possible into the oil fields of Nevada county. Bridges that were washed away have been replaced, roadworkers are busy, and operations that have been shut down because of rain and floods have been resumed.

With flood water receding, the pipe-line gang again took up the work of completing the eight-inch line to the Berry Asphalt Company from its plants at Waterloo to the new field. This line will be five miles in length and is being laid by D. T. Ross Engineering Company of Tyler, Texas. Work is being rushed as pumps on all producing wells are idle with storage tank and pits full.

Charlie Steele and Bryan Warmack expect to place their William Haynie No. 1, section 6-14-20, on the pump early next week. This well was brought in during the "rain era" and oil is standing 900 feet in the casing. Pits for the storage of oil have been completed.

The huge gasser of the C. B. & F. Petroleum Company, on the John R. Lewis lease, which blew in wild three weeks ago, is again the center of interest. The well was capped after a 48-hour rampage, and had been thought of as ruined as a Nacatosh producer. Plans for casing back to that sand and trying to go to the Tokio had been discussed, also plans for abandonment had been talked but no decision had been reached Monday, so it was decided to free the well again to see what would happen. It was released and oil, practically free from water, flowed at the rate of 200 barrels a day.

The Lilly Block well of Benedum & Trees, in section 9-14-20, is the "Mystery Well," of the new field. Information concerning it is scarce. The only thing obtainable is that a drill stem was dropped some 1,700 feet and all efforts to dislodge it have been unsuccessful.

The C. C. Fincher No. 2 of Benedum & Trees, in section 10-14-20, which was drilled in early last week, is estimated at 500 barrels daily.

Wildcaters are busy in Nevada county and it is reported that several new wells will be started within the next few days.

Two Snow Hill Wells Drilling

Deep Field Again in Limelight—Phillips Co. Testing.

Camden—Main interest of members of the El Dorado oil fraternity continues to center in the Snow Hill area of the Smackover field, where work is under way in search of production in the deep Permian lime formation.

Two wells are drilling in the resumption of activities in that area. One reached the testing stage during the past few days and the other is now approaching an interesting depth.

A test was made by the Phillips Petroleum Company on the E. T. Gette (Rose) No. 1, in Section 28-15-15, near the first wells that were drilled in that area about a year ago. After a showing of salt water was obtained it is understood that the crew will proceed with plugging back operations.

Testing of the well was at a depth of 4,957 feet, slightly below where casing had been set. It is reported that a good showing of oil was obtained in the lime formation at a depth of 4,830 feet, and the well will be plugged back for a test at that depth.

The other well which is well under way is the Levy No. 1 of the Lion Oil Refining Company, in Section 21-15-15. Drilling is reported in progress at a depth of 3,706 feet.

The Lion test is some distance from the first wells in that sector and will be closely watched as it moves on toward the coring stage in drilling operations.

Nevada Field Again Active

Roads Repaired, Operations Speeded, New Locations Made.

Prescott—Return of fair weather has brought a renewal of activity in the Nevada county oil fields. Roads have been put in condition, bridges have been replaced, and trucks are hauling materials to the field.

The eight-inch pipe line being put in from Waterloo to the Benedum-Trees leases in the new field has been completed and has been tested for leaks. Oil will be turned into the pipe some time this week.

The Groves No. 3, in section 10-14-20, was drilled in last week and is estimated at 300 barrels a day. This well is a Nacatosh sand producer.

A derrick is up for Groves No. 4, section 10-14-20, for a Nacatosh producer. Groves No. 5, which was drilled in last week in the northeast corner of the southwest quarter of the northwest quarter of section 10-14-20, is estimated at 500 barrels daily from the Woodbine, or Tokio, sand at 2,200 feet. Machinery for placing this well on the beam is now being set and will be completed this week.

Reports from the field are that Groves No. 6, section 10-14-20, was drilled in Tuesday in the Nacatosh sand, and is estimated at 300 barrels daily.

A derrick is up for Groves No. 7 and location has been made for Groves No. 8, in section 10-14-20, for Woodbine tests at the 2,200-foot level. Drilling will be under way in a few days.

The derrick is up and equipment is being placed for Groves No. 9, section 10-14-20, for a Nacatosh producer to offset the Glasco No. 1 in this section.

The Fincher No. 1 is pumping 460 barrels daily. Fincher No. 2 has not yet been placed on the beam but is estimated at being good for 300 barrels daily. Drilling equipment is being brought in for Fincher No. 3, and location has been made and work started on the derrick for Fincher No. 4, section 10-14-20.

The drill stem has at last been removed from the Lilly Block well of Benedum-Trees, and drilling has been resumed at a depth of 3,675 feet. Operators say this well will be drilled to the Trinity sand at a depth of from 4,500 to 5,000 feet. Benedum and Trees have derrick up for the Jackson No. 1, to the Woodbine sand, section 9-14-20.

Material is on the ground for the erection of a hotel and store building at the intersection of the highway and the road to the field. Claude Garner of Hope is the owner of this land and will also be owner of the hotel and store.

Tests to Be Drilled in Unproven Nevada Area

El Dorado—Permits for two new wildcat tests to be drilled out of the proven area in Nevada county were issued by the Arkansas state board of conservation.

One permit was issued to the Berry Asphalt Company of Waterloo to drill the Junious Haynie No. 1, about three miles northwest of the Benedum and Trees field. The other permit was to W. S. King of Texarkana to drill the Wren No. 1 about 11 miles south of Prescott.

There are eight oil and gas producers completed in the new Nevada county area with several tests being drilled. No report on daily production is available because of the lack of storage space. It is estimated, however, that daily production exceeds 3,000 barrels.

New Producer Reported In Nevada County Field

Prescott—The Benedum and Trees well, in section 10-14-20, Nevada county, known as the Fincher No. 3, was brought in late Monday at a depth of 2,200 feet, in the Woodbine, or Tokio sand. No estimate on the daily production could be obtained but operators and owners are well pleased with the findings at this level.

The Lilly Block well continues to hold the spotlight. Reports from the field Tuesday state that drilling has been resumed after a hold up of a few hours. Plans are being made for a drill stem test at 4,600 feet, which had been reached at noon Tuesday.

New Nevada County Well Good Producer

Prescott—The Benedum Trees Jackson well No. 1, in section 9-14-20 came in Saturday in the Tokio sand at a depth of 2,200 feet.

It was reported that the well might easily be the best in the new Nevada county field.

New Well Extends Nevada Field

Gazette

Special to the Gazette.

Prescott, March 1.—The Mary Jackson No. 1 was bailed in for an estimated 1,000-barrel oil producer today by Benedum & Trees Oil Company. The well extends the new Nevada county field from the Tokio sand a mile northeast. It is located in the northeast corner of the northwest quarter of the northeast quarter, Section 9-14-20.

The well was bottomed at 2,200 feet. Oil was standing to the top of the hole tonight and the well will be placed on the pump immediately.

Big New Oil Producer In Nevada Field

Gazette

Special to the Gazette.

Prescott, March 5.—Benedum and Trees Oil Company's Fincher No. 3 test, located in the northeast corner of southwest quarter of northeast quarter of Section 10-14-20 in the new Nevada county oil field was bailed in today after the plug had been drilled. Tonight oil stands to the top of the hole. It was pronounced good for 1,000 barrels on a pump. It is the best produced in the field from the Tokio sand at a 2,200-foot depth. The oil is practically free of water.

Nevada County Has New Town In Oil Field

Gazette 3-7-37

"Nevark" Springs Up—Two New Wells Give Field Prestige.

Prescott—Nevada county is the scene of much activity in buying and selling of leases and royalties. Wildcaters are busy blocking land in several sections of the county and a number of wells are to be spudded in within the next few days. Reports are that locations will be made near Mt. Moriah, Laneburg and Bluff City.

The bringing in of two good producers the last week, the Mary Jackson No. 1 and Fincher No. 3 of Benedum & Trees, has tended to give the Nevada field a greater impetus and new prestige.

The Mary Jackson is reported good for 1,000 barrels. The Fincher No. 1, bailed in Friday, is declared the best well in the field, free of water, and estimated to also be good for 1,000 barrels daily.

W. E. Stewart has been active for the past few days acquiring acreage. Drilling on his Waller No. 1, in the northeast corner of the northeast quarter of the northeast quarter of section 1-14-20, was suspended this week but is to be resumed early next week.

Location has been made for the Christopher No. 1, section 3-14-20, by G. H. Vaughn of Dallas, Texas, and the test is to be spudded in some time next week.

Location for a Woodbine test north of the Mary Jackson No. 1 has been announced by Benedum & Trees and it will be known as the Mitchell No. 1. This is in section 4-14-20.

Since the Mary Jackson well has been brought in, the spot-light has again shifted to the Lilly Block well, the deep test that is known as the "mystery well" of the field. There are rumors concerning this test but officials and employees of the company refuse to give out information. The only thing any one knows and will vouch for is that they are still drilling. The well is fenced in.

The 55,000-barrel steel storage tank of Benedum & Trees is three-fourths finished and workmen are to complete it the coming week so

oil will not have to be stored in earthen pits.

Drilling on the King No. 1, section 6-13-22, near Sutton, has reached 2,100 feet and has been cored, but to date there is no report.

Lumber companies in Nevada county are doing a rushing business as the work progresses on the new town, Nevark, name of the oil field town which has sprung into existence as a result of the discovery of oil southeast of the old Waterloo field. Building activity which was halted by rain has been resumed.

Drilling Cessation in Nevada Field Unexplained.

Gazette, 3-20-37

Special to the Gazette. Prescott, March 20.—The unexplained cessation of drilling operations by Benedum & Trees Oil Company in the new Nevada county field Thursday, except at their Lilly block deep test, was the highlight in the week's oil news, overshadowing the abandonment of C. B. & F. Petroleum Company's William Haynie No. 1 in the Tokio sand where salt water was encountered, blasting the hopes of operators that this sand would produce in the old Waterloo or Irma field.

No official of the Benedum & Trees company could be located in the county today to explain shutting down drilling rigs and laying off drillers indefinitely. One rumor was that the market for the Tokio sand production is glutted, another that litigation now in appeal to the Arkansas Supreme Court affecting the title to leases in the new field caused the shutdown, and another that the present market price for the lighter oil of the field is too low now to justify more production.

Berry Asphalt Company completed its William Haynie No. 1, in the northeast corner of the northeast quarter of the southwest quarter of Section 6-14-20, in the Waterloo field, for a producer from the Nacatosh sand at 1,200 feet. Drill stem test showed a saturated sand. The plug is being drilled and the hole bailed today for what the owners say is an average well for the old field, good for 250 barrels of oil on the pump a day.

G. H. Vaughan of Dallas, Tex., was drilling at 2,450 feet today, nearing the Woodbine sand, in his Christopher Estate No. 1, in the southwest corner of the southwest quarter of the southeast quarter of Section 3-14-20. The Nacatosh sand in this test contained little oil showing. This test is not quite a half-mile north of Benedum & Trees Oil Company's discovery well in the new field.

Bruce Wallace and Charley Steele are nearing the Tokio sand at 2,200 feet in their William Haynie No. 2, in the northeast corner of the southeast quarter of the northwest quarter of Section 6-14-20, and will set casing tomorrow and drill in early next week.

Hard Formation Reached.

Drilling slowly in very hard formation at 5,100 feet in their Lilly Block No. 1, the field's deep test, in the northeast corner of the northeast quarter of the southeast quarter of Section 9-14-20, Benedum & Trees Oil Company officials continue to guard closely all information as to findings, but rumor in the field is that whatever is found in this test will be just under the rock formation now being drilled.

C. B. & F. Petroleum Company has abandoned its William Haynie No. 1, the field's most spectacular test, in the southwest corner of the northwest quarter of the northeast quarter of Section 5-14-20, the plug being drilled Wednesday and the Tokio at 2,200 feet producing only salt water. The derrick will be skidded 330 feet north and another test drilled to the Nacatosh at 1,200 feet. In the original test a huge gasser came in from the Nacatosh and gave the operators more trouble than has been experienced from any other well in the Nevada field. At one time

it was estimated the well in the Nacatosh was producing as high as 1,000 barrels of fluid a day, but the gas was permitted to escape so long before the well was brought under control that the Conservation Department advised casing off the Nacatosh and drilling to the Tokio.

In wildcat territory the W. S. King No. 1, being drilled by W. E. Stewart and associates near the town of Sutton, in the northeast corner of the southwest quarter of the northeast quarter of Section 6-13-22, caused much excitement when considerable oil showings were encountered in the Woodbine sand at a depth of 2,450 feet. The operators ceased drilling and are curing titles which is evidence to scouts the owners feel they will have a producer.

Nevada Oil Field Active

Democrat 3-20-37

New Locations Made and Town of Nevark Continues to Grow.

Prescott—Cold weather did not halt operations in Nevada county's oil fields the past week. Buildings continue to go up in the new town of Nevark and the place is fast taking on the appearance of a typical oil field town.

Drilling has been resumed in the William Haynie No. 2 well, in section 6-14-20. This test will be drilled to the Tokio, or Woodbine, sand at 2,200 feet. Location for a well in this same acreage will be announced within a few days.

Lillie Block No. 1, Benedum & Trees Oil Company's deep test and "mystery well" of the field continues to hold the spotlight and interest of the oil scouts and operators. The test is down some 5,000 feet, said to be drilling in a formation the same as in the Rodessa field, above production.

The Junious Haynie No. 1, which was drilled in section 6-14-20 by the Berry Asphalt company, has been abandoned. The test was only made to the Nacatosh sand as the contract called only for a Nacatosh test.

The Christopher No. 1 was spudded in several days ago in section 3-14-20, and will be drilled to the Tokio sand if sufficient production is not found in the Nacatosh sand. This will be an extension to the field if a producing well is made.

Benedum & Trees have steel storage tanks on the ground for the production from the Mary Jackson well in section 9-14-20, which is said to be one of the best producers in the field.

The wild well of the field, the C. B. & F. Petroleum company's test in section 5-14-20, has been abandoned. The gas pressure was finally cased back and drilling was continued from the Nacatosh sand to the Tokio, or Woodbine sand, but operations ceased Tuesday. Rumor has it that the derrick will be skidded to a new location on the same acreage and another well will be spudded in at an early date.

Drilling began this week in the Mitchell No. 1 of Benedum-Trees in section 9-14-20.

One New Producer, Dry Hole In Nevada County Field.

Gaz. 3-28-37

Special to the Gazette.
Prescott, March 27.—A producer in the Waterloo field and a dry hole in nearby territory were the net results of activities in the Nevada county oil field the past week, with rigs up and ready to spud in in three other tests in the new field.

Berry Asphalt Company had a fishing job which delayed the bringing in of its William Haynie No. 1, in the northeast corner of the northeast quarter of the southwest quarter of section 6-14-20, in the Irma, or Waterloo field when the bailer broke loose, but today the well was pronounced good for 250 barrels of oil a day on the pump, which will be installed next week. This well is from the Nacatosh sand at 1,200 feet.

The Sid Collins test in the southwest corner of the southwest quarter of the southeast quarter of section 12-14-20, drilled by Walter Lown, is a failure in both the Nacatosh and Tokio sands, and will be abandoned.

Glasco trustees have erected steel derrick and rigging is up and ready to spud in a test in the northeast corner of the northwest quarter of the southeast quarter of section 10-14-20, an offset to the Glasco producer, one of the first in the new field, and will be drilled to the Tokio sand at 2,200 feet.

G. H. Vaughan of Dallas, Tex., is drilling at 2,872 feet in the Christopher estate test, in the southwest corner of the southwest quarter of the southeast quarter of section 3-14-20, having passed both the Nacatosh and Tokio sands without production, both sands being low for the new field. Operators say they intend to make a deep test and expect production when they cut the fault next week. This test is nearly a half mile from the Benedum & Trees Oil Company's discovery well in the new field.

New Test Spudded In
Benedum & Trees Oil Company today spudded in its Mitchell No. 1 test, 330 feet north of its Mary Jackson No. 1 in the northwest quarter of the northeast quarter of section 9-14-20.

Benedum & Trees also has rigging up to spud in its Groves Timber and Land Company No. 9 for a Nacatosh test, in the northeast corner of the northeast quarter of the southwest quarter of section 10-14-20.

C. B. & F. Petroleum Company has announced location for its William Haynie No. 2 test, in the center of the southeast quarter of the northeast quarter of section 5-14-20, and derrick is being erected.

Benedum & Trees' Lily Block No. 1, in the northeast corner of the northeast quarter of the southeast quarter of section 9-14-20, the field's deep test, continues the center of attraction with no information available as to depth or findings. It is known that only from eight to 10 feet is drilled each day, and drillers are taking frequent cores, while observers claim the hole is approximately a mile deep.

Benedum & Trees' sudden cessation of drilling activities last week is attributed to the high cost of standardizing wells in the Nacatosh and Tokio sands, and drillers this week are experimenting with bailers instead of pumps on the Mary Jackson and other producers. Operators say it costs \$4,000 to standardize one of these wells, and by the use of a bailer from two to four barrels of oil can be drawn from a well each 10 minutes, while on account of the heaviness of the oil, not more than 50 per cent of that amount of oil is being produced with pumping equipment and the cost of bailing is considerably less than pumping.

Rumor is rife that Benedum & Trees is seriously considering the installation of its own refineries in the field to take care of production from the Tokio sand. All production of this company from the Nacatosh sand has been contracted by Berry Asphalt Company of Waterloo, this oil being carried from the field in the new pipe line installed by the Asphalt company.

Drilling and building operations in the field was stopped yesterday by heavy rain and sleet.

Claude Garner's two-story hotel in the oil field town of Nevark is nearing completion, and will be ready for occupancy next week.

The 55,000-barrel oil storage tank of Benedum & Trees in the new field is completed and will be receiving oil for storage next week when it has received a coat of paint.

To Spud In Nevada County Oil Test Well

A well of considerable interest is being spudded in today in the northeast quarter of the northeast quarter of section 17, township 11 south, range 20 west, Nevada county, Ark. to be known as the Shepard-Purifoy No. 1.

The well is located on Route 24, 14 miles southeast of Prescott, and about four miles southwest of Whelen Springs, where the Guest Oil Company some time ago was reported to have cored a rich sand both of oil and gas and was reported to have ruined their well in an attempt to smother their gas to prevent a blowout.

A turn-key contract for this well to 3,000 feet has been let to H. H. McBride, drilling contractor of Texarkana.

The well will be drilled to take in all the known sands in that territory which includes the Nacatosh, Ozan, Tokio-Woodbine and Travis Peak series.

New Test Well to Be Drilled In Nevada County.

4-15-37

Special to the Gazette.
Prescott, April 14.—A test well to be known as the Shepard-Purifoy No. 1, 14 miles southeast of Prescott, was spudded in today. H. H. McBride, Texarkana, has a contract to drill 3,000 feet. The well is in Section 17-11-20, Nevada county.

Impetus Given Drilling in Field Near Prescott.

Gazette 4-26-37

Special to the Gazette.
Prescott, April 24.—The gloom which settled over the new Nevada county oil field three weeks ago when Benedum & Trees Oil Company abandoned its Lily Block No. 1, in the northeast corner of the northeast quarter of the southeast quarter of Section 9-14-20, at the 5,300-foot level, and called a halt on further drilling operations in the field, was dissipated today when that company began casing off its Groves Land and Timber Company No. 1, the discovery well, on the north side of the northeast quarter of the northeast quarter of Section 10-14-20, with the announced intention of drilling it as a deep test. This well was a 200-barrel producer from the Tokio sand at a depth of 2,200 feet. Actual deepening of this well will begin next week, as soon as the sand is cased off and cemented.

Practically all arrangements have been made for another deep test, in the Grady Vaughan Christopher estate No. 1, in the southwest corner of the southwest quarter of the southeast quarter of Section 3-14-20, in which operations ceased a week ago at a depth of approximately 4,300 feet. It is said this test will be drilled to a depth of 6,000 feet.

Impetus to deeper drilling for a higher gravity oil in the new field is given by the information of drillers of the Lily Block No. 1 test that a 75-foot sand was encountered at a depth of 4,200 feet which was practically saturated.

Sheppard Bros., who spudded in a wildcat test in the northeast corner of the southeast quarter of the northeast quarter of Section 17-11-20, last week, have done little drilling, being down only 50 feet today. Drillers say operations in earnest will begin next week in this test.

Drilling has continued throughout the week in the Stewart-King wildcat test near Sutton, in the southeast corner of the southwest quarter of the southwest quarter of Section 6-13-22, but drillers have made no announcement of depth. Drilling was resumed in this test after several weeks delay, at the 2,300-foot level.

In the Waterloo field, Charley Steele and Bruce Wallace expect to drill the plug in their Haynie No. 2 Monday, in the northeast corner of the southeast quarter of the northwest quarter of Section 6-14-20, in the Nacatosh sand.

Nevada's Discovery Well to Be Deepened

Democrat 4-25-37

Prescott—Wildcatting continues to hold the spotlight in the Nevada county oil activities. Drilling was resumed in the Stewart-King well, one-half mile west of Sutton, in the southwest quarter of section 6-13-22, the past week after a fishing job of several days.

This well was stopped several weeks ago at the 2,300-foot level but operators say they will now drill to 4,000 feet unless oil in paying quantities should be encountered before reaching that depth.

Benedum & Trees are ready to begin drilling in their discovery well again. This well was drilled to a depth of 2,200 feet, and brought in as a Woodbine or Tokio sand producer. It was placed on the pump and has been one of the best producers in the new field. Operators say they will drill this test to a depth of 7,000 feet if oil is not encountered above this level.

Clyde Cox, president of the C. B. & F. Petroleum Company, has up a new derrick and is moving machinery to his new location east of the company's old well in the southwest quarter of the southeast quarter of section 5-14-20. Mr. Cox was rushing preparations to spud in his well Saturday. This test is known as the William Haynie No. 2.

Nevada County Field Reports New Producer

Democrat 4-26-37

Prescott—Charlie Steele and Bruce Wallace brought in their Haynie No. 2 oil test, in section 6-14-20 Sunday. The well was drilled in at a depth of 1,152 feet, a Nacatosh producer.

Mr. Steele says that two more locations have been made for Haynie No. 3 and Haynie No. 4, all in section 6-14-20. An exact estimate was not placed on production of the well just brought in.

Benedum and Trees Deepen Discovery Well

Democrat 5-2-37

Prescott—Benedum and Trees continue to drill in their discovery well in the new field of Nevada county. This well was a Woodbine or Tokio producer at 2,200 feet but the well has been cased back and drilling was resumed for a deep test.

Drilling operations have been stopped in the wildcat test of Stewart-King near Sutton. No work has been done on this test since Tuesday. No information is obtainable as to the delay.

Drilling Operations Limited In Nevada Field.

5-9-37

Special to the Gazette.
Prescott, May 8.—Drilling operations in the Nevada county oil field during the week were confined to the Benedum & Trees discovery well, the Groves Land and Timber Company No. 1 on the north side of the northeast quarter of the northeast quarter of section 10-14-20, the field's second deep test. Drillers are taking frequent cores around the 3,600-foot level in this test which is being deepened from its production level of 2,200 feet.

C. B. & F. Petroleum Company set casing early in the week in its William Haynie No. 2, in the center of the southeast quarter of the northeast quarter of section 5-14-20, in the Nacatosh sand, at a depth of slightly less than 1,200 feet, the sand being encountered in this test about 10 feet higher than that in the Waterloo or Irma field a half mile west. Operators say the sand in this test is thoroughly saturated with heavy oil and there is considerable gas pressure present, similar to that of their William Haynie No. 1, the field's wild well, which had to be abandoned after running wild several days. The plug will be drilled tomorrow and indications are they will have a producer which probably will flow for a while.

Operations in the wildcat territory also were at a standstill during the week. It is expected that operations will be resumed in the Stewart-King wildcat test near Sutton next week. This test was shut down last week at a depth of 3,500 feet. It is located in the southeast corner of the southwest quarter of the southwest quarter of section 6-13-22. Sheppard Bros., after setting surface casing last week, are

delaying resumption of drilling until titles are perfected near their test, in the northeast corner of the southeast quarter of the northeast quarter of section 17-11-20.

Resumption of drilling in Grady Vaughan's Christopher estate No. 1 will not begin until next week. This test was drilled to a depth of 4,300 feet when operations ceased several weeks ago. The test is in the southeast corner of the southwest quarter of the southeast quarter of section 3-14-20, and it is reported that arrangements have been made to carry on to the 6,000-foot level as the new field's third deep test.

Big Gas Well Completed In Nevada County

May 10, 1937

Special to the Gazette.

Prescott, May 9.—The C. B. and F. Petroleum Company's William Haynie No. 2 well, in the center of the southeast quarter of the northeast quarter of section 5-14-20, came in this afternoon as a gasser, good for about 40,000,000 cubic feet, according to Byron Franks, secretary of the company.

The test was drilled through three feet of gas sand and six feet of oil sand with little oil showing.

This well extends old Waterloo field a half mile east, and is a quarter mile from the company's gasser which blew in last February and after running wild several days, was condemned and abandoned. The new well is under control and the Conservation Department will gauge it tomorrow.

William Haynie No. 2 Well Seen As 500-Barrel Producer.

Gazette 5-16-37

Special to the Gazette.
Prescott, May 15.—The C. B. & F. Petroleum Company's William Haynie No. 2, located in the center of the southeast quarter of the northeast quarter of section 5-14-20, which was bailed in Sunday as a gasser estimated at producing 40,000,000 cubic feet, began blowing considerable oil Monday and when closed down Wednesday was producing 500 barrels of oil a day.

A split in the inner casing at the 300 foot level necessitated plugging the well at that depth and the pouring of 150 sacks of cement to plug the hole. The plug will be drilled tomorrow and operators expect the well to continue flowing. The gas pressure is gradually diminishing in this well, which extends the old Waterloo field a half mile and is just one-fourth of a mile east of the company's wild gasser brought in in February. It was condemned and abandoned.

Benedum & Trees are coring at 4,100 feet in their discovery well, Groves Land & Timber Company No. 1 on the north side of the northeast quarter of the northeast quarter of section 10-14-20. While drillers and owners are giving out no information as to prospects and findings, scouts and other operators in the field are optimistic over the test. Several officials of the company from Pittsburgh are watching developments. Cores are being taken from a sand at 75 feet in the new field's first deep test, the Lily Block, in which excellent oil showings were found. The test which was abandoned at 5,300 feet. Since C. B. & F. Petroleum Com-

pany's William Haynie No. 2 came in with heavy gas pressure, Benedum & Trees Fincher No. 3 which has been producing around 150 barrels of oil a day on the pump for three months, showed increased production and has been flowing this week by heads of several minute intervals. Operators say the action of the William Haynie has caused this change in the Fincher well as both are from the Nacatosh sand at the 1,200 foot level.

In the wildcat territory, drilling operations were at a standstill during the week except Shepard Brothers' Purifoy No. 1 located in the northeast corner of the southeast quarter of the northeast quarter of Section 17-11-29 11 miles due east of Prescott. The well is in the Nacatosh sand at a depth of 495 feet. Drillers are coring this sand which is about 40 feet in depth and the finding of considerable oil saturation has placed this test in the spotlight. Operators doubt that a producer will be made in the Nacatosh but said the high elevation at which the sand was encountered proves that structural conditions are good. They expect to reach the Travis peak at about 2,500 feet in this test, which is reached in the proven fields of Nevada county at a depth of 4,200 feet.

Benedum and Trees Deepen Discovery Well

Dem 5-30-37

Prescott—Benedum and Trees are still drilling in their discovery well, the Groves No. 1 in Nevada county's new oil field but no information is available as to the depth or what formation they are in. Oil scouts are intensely interested as to the outcome of this well and are watching it closely.

Shepard Bros. have stopped operations in their Purifoy No. 1, section 17-11-22, for the purpose of clearing up titles to acreage.

Nevada Well Checked While Casing Repaired

Democrat 5-17-37

Prescott—The C. B. & F. Petroleum Company's William Haynie No. 2, in the northeast quarter of section 5-14-20, which blew in last Sunday as a gasser, estimated at 40,000,000 cubic feet started flowing oil Monday and continued to flow until a break occurred in the casing and the well was shut down till this could be mended. The breaking being mended with cement which will be allowed to set until Monday, when the plug will be drilled and the well allowed to flow again.

This test is about a quarter of a mile from the William Haynie No. 1, which blew in as a gasser some time ago and ran wild for several days before it could be brought under control. This new test extends the old Waterloo field a half mile east.

Benedum and Trees, drilling in their discovery well in the northeast quarter of section 10-14-20, known as the Groves No. 1, are coring at the 4,100 foot level. No information as to findings were available. This is Benedum & Trees second deep test for the new field and much interest is being shown.

Wildcat operations in the county hit a low when the Stewart-King test in the southwest quarter of the southwest quarter of section 6-13-22 shut down at a depth of 3,500 feet. No information as to when operations will be resumed is available.

Shepard Bros., drilling the Purifoy No. 1, in the southeast quarter of the northeast quarter of section 17-11-20, at last report were still in the Nacatosh sand. This sand was encountered at a depth of 490 feet and is approximately 40 feet deep. A core was taken and one will be taken every few feet as long as this formation is encountered.

Nevada Interest Centered On Benedum and Trees Test.

Gazette 5-23-37

Prescott, May 22.—Interest this week in the Nevada county oil field has centered upon Benedum & Trees Oil Company's deep test, the Groves Land & Timber Company No. 1, discovery well which produced from the Tokio sand at 2,200 feet. The test is located on the north side of the northeast quarter of the northeast quarter of Section 10-14-20. While drillers and owners have been secretive about progress, scouts and others watching operations said that a sand more than 200 feet thick was encountered at the 4,200-foot level and repeated cores failed to insure a producer. The bit is down 4,600 feet and drilling is continuing.

C. B. & F. Petroleum Company drilled the plugs in its William Haynie No. 2, located in the center of the southeast quarter of the northeast quarter of Section 5-14-20, but has delayed bringing in the well from the Nacatosh sand at 2,200 feet until next week. Rumor is that Hot Springs interests have secured a 10-day option on this well and nothing will be done toward bringing it in until that period expires. The well came in last week as a gasser good for 40,000,000 cubic feet. Later it began flowing oil and a split inner casing made it necessary for additional concrete to be poured. When the plug was drilled this week strong gas pressure was in evidence and considerable oil flowed when the valves were opened. Oil operators predict that this will be the best producer in the Waterloo field.

Benedum & Trees Oil Company is fishing for a drill bit in its Mary Jackson No. 1 located in the northeast corner of the northwest quarter of the northeast quarter of Section 9-14-20. This producer came in several months ago from the Tokio sand at 2,200 feet.

In wildcat territory, Shepard Brothers were idle in their Purifoy No. 1 after coring was completed in the Nacatosh sand at 500 feet. Drilling will be resumed next week. This test is located in the northeast corner of the southeast quarter of the northeast quarter of Section 17-11-20, 11 miles due east of Prescott. Good oil showings were found in the Nacatosh but not sufficient to make a producer. Drillers said this test will be drilled to the Travis peak at about 2,500 feet.

Two Wells in Nevada Gazette Field Being Cored

Gazette 5-24-37

Prescott—Benedum and Trees are coring in their discovery well in Nevada county's new field, the Groves Land & Timber Co. No. 1, on the north side of the northeast quarter of the northeast quarter of section 10-14-20. Drillers and owners of the well refuse to give out information as to findings but oil men are watching it closely.

Shepard Brothers are coring in their Purifoy No. 1 in section 17-11-20, 12 miles east of Prescott. No information as to findings was available here.

William Haynie No. 1 in Nevada Brought In as Producer.

Gaz 6-2-37

Special to the Gazette.
Prescott, June 1.—Estimated as capable of producing 200 to 300 barrels of oil a day and several million cubic feet of gas, the C. B. and F. Petroleum Company's William Haynie No. 1 was swabbed in last night.

The well is located in the center of the southeast quarter of the northeast quarter of section 5-14-17. It is producing from the shallow Nacatosh sand at about 1,200 feet. The well extends the Waterloo field a mile and a half.