

NEW MARINE WELL FLOWING BY HEADS

Preparation for New Test and Resumption of Drilling on Another Holds Interest.

8-17-30

Special to the Gazette.

El Dorado, Aug. 16.—Performance of the latest producing well in the Urbana deep oil pool, the Marine Oil Company's No. A-4 Thompson, located in section 10-18-13, preparation of the Marine to start another test nearby and resumption of operations on another deep test in Ouachita county featured developments in the El Dorado oil district during the past week.

The Marine Company's A-4, in the southeast corner of southwest of northeast of section 10-18-13, completed 10 days ago from a depth of 3,556 feet is flowing 500 barrels a day by heads. The lack of water is especially encouraging, in view of the fact that salt water ruined several wells in this sector, oil men point out.

The Marine is rigging up on its Winn F-3, located in the northwest corner of northeast of southeast of section 10-18-13, a diagonal southeast offset to the Thompson A-4. Derrick has been built and it is expected that drilling will get under way within 10 days. This test is directly east of the Winn F-2, which was completed early this summer, and has been producing about 100 barrels daily until recently. An air machine was installed to boost production, but when this failed the crew lowered the tubing several hundred feet. This is expected to result in increased output.

The Thompson B-3, a quarter east of these three, which is now seven months old, has produced 150,000 barrels of oil and is flowing and pumping about 750 barrels a day.

H. B. Bellmont and others have resumed drilling on their Georgia Dean No. 1 in section 16-15-17, Ouachita county, which has been closed down for several weeks due to lack of water. Water and gas lines were completed and drilling started below surface casing. This test will be drilled 3,200 feet deep. It is between the Louann field and the McDonald area, where a few small wells were completed in 1929.

Ohio Oil Company has started on one of three tests to be drilled in the Rainbow area. The well is on the Furlow land in section 12-17-12, southeast edge of the field. This is the first new test to be started in the Rainbow field in several months.

Tidal Oil Company is drilling below 3,000 feet on its Arkansas Trim No. 1 in section 3-16-14, near Callon on the Ouachita river. Oil showings have been found in this well at several places, but drill stem tests failed to indicate production.

Several local oil men have purchased outlying acreage in Miller county on the strength of the Lenz well, but no drilling operations have been started by El Dorado interests yet.

THREE NEW WELLS IN URBANA AREA

Drilling Started on Fourth; Old Wells Being Work- ed Over.

Special to the Gazette. 8-24-30

El Dorado, Aug. 23.—With three wells in the Urbana deep sand area already completed and producing about 1,100 barrels of oil a day, the Marine Oil Company is drilling on a fourth, having set surface casing at 310 feet the middle of this week.

The newest deep test in the Urbana field is the Winn F-1 and is located in the northwest corner of northeast of southeast of section 10-18-13, near two other producers.

The Marine has recently completed working over its Winn B well in the northeast corner of northwest of south-

east of section 10-18-13, which was completed about three months ago. Placed on the pump again after the tubing was lowered several hundred feet, the well is now making around 150 barrels a day. The Thompson A-4, which was brought in three weeks ago, is making 250 barrels of pipe line oil. Oil men are optimistic over the fact that this well is showing no salt water, a menace which has ruined a number of wells in the Urbana district. The Thompson discovery well, a quarter to the west, is making about 750 barrels a day, with a large amount of water.

The Tremont Oil and Royalty Company is drilling at around 700 feet on its Georgia Dean No. 1 wildcat test in section 16-15-17, Ouachita county near Louann. The well is located in the northeast corner of southeast of northwest of section 16. It will be taken to 3,500 feet unless production is found. Another well is being started by a group of local people in section 23-15-18, northwest of the McDonald area.

The Tidal Oil Company is working on its Arkansas Trim No. 1 well in section 4-16-14, near Callon, in which several good showings have been encountered.

It is expected that one of the two deep wells to be drilled in township 16, range 16, southwest of Smackover

will be started soon. Two blocks aggregating about 2,000 acres have recently been obtained for the tests. One well will be 3,200 feet, the other 4,500. The Ohio Oil Company is drilling on its Furlow test in section 12-17-14, Rainbow field. This is the first new operation in Rainbow field for some time. Many of the old wells are holding up exceptionally well. One of the most prolific leases in the El Dorado district is the Gregory lease of Dr. J. S. Rushing and associates, a tract of 20 acres from which four wells have produced more than 750,000 barrels of oil, worth approximately \$1,000,000.

The wells drilled near Hillsboro during the early part of this year are holding up their production, but new tests have been started recently. The Phillips Petroleum Company now owns half interest with the Modisett Drilling Company, which drilled the first wells.

DRY GASSER CAPPED IN RAINBOW FIELD

Completion Features Week's Development in South Arkansas.

Special to the Gazette. 8-31-30

El Dorado, Aug. 30.—Completion of a 25,000,000-foot dry gasser in the oldest part of the Rainbow field, 11 miles northeast of El Dorado, featured the week's developments in the South Arkansas oil fields.

The well was a perforation job on the No. 3 E. F. Gregory of Dr. J. S. Rushing and associates in section 11-17-14, brought in from a depth of 3,150 feet. After being allowed to flow about four hours the test was closed in and preparations started to turning the gas into commercial lines in the field.

The Rushing well, brought in two years ago as a fair oil producer, from a depth of 3,322 feet, is located in the southeast corner of west half northwest southwest of section 11, on a 20-acre tract. It became unprofitable as an oil producer a short time ago and the perforation process was decided upon. The casing was split about a foot and the well came in as a gasser from the higher level.

The Rushing lease of 20 acres has been one of the most prolific in the Rainbow field, and has already produced in round figures \$1,000,000 worth of oil, approximately 750,000 barrels. There now are three other producing wells, making 370 barrels daily, with but little decrease in output. It is a popular saying in El Dorado that Dr. Rushing, a local dentist, staked his last dollar in drilling the first well, which came in early in April, 1923, making 5,000 barrels per day. At the height of production the lease was making 10,000 barrels per day, and Dr. Rushing was said to have refused an offer of \$400,000 for it. The landowner, E. F. Gregory, has become wealthy from this and other leases on his farm.

The Marine Oil Company is drilling ahead on its Winn F-1 deep well in the northwest corner of northeast of southeast of section 10-18-13, Urbana field. The company has three producing wells in this area, all in the 3,500-foot sand.

Plans still are going forward for the drilling of two deep wells in township 16, range 16, southwest of the Smackover field, where about 2,000 acres has been leased. One of the wells will be 3,200 feet, the other 4,500.

The Tremont Oil and Royalty Company is drilling on its Georgia Dean No. 1 test in the northeast corner of southeast of northwest of section 16-15-17, near Louann.

W. D. Wingfield is reported to be planning a deep test in section 16-19-15, near the south edge of the South El Dorado field. The well is making a small amount of oil. It was completed several weeks ago.

New Oil Well Brought In North of El Dorado.

El Dorado, Sept. 12.—(P)—The Ohio Oil Company reported today it had brought in a 600-barrel oil well in the Rainbow City field, north of here. The well was said to be flowing at the rate of 25 barrels an hour, or approximately 600 barrels daily.

750-Barrel Well Completed as Producer in Urbana Field.

10-6-30

Special to the Gazette.

El Dorado, Oct. 5.—Seven hundred barrels were added to the daily oil output of the Urbana field Saturday when the Marine Oil Company completed the Winn F-1 as a producer.

The completion, in section 10-18-13, was made following a day of swabbing and bailing. A slight presence of water was noted in the oil analysis, it was reported.

The well is a diagonal offset to the Thompson A-4 in the same section, a continual 400-barrel pumper of pipe line oil.

The oil fraternity tonight maintained an interested watch on the Georgia Dean No. 1, a wildcat in the southeast of the northwest of section 16-15-17, Ouachita county. The test, conducted by Tremont Oil and Royalty Co., is said to have penetrated a promising sand strata at 2,700 feet. A drill stem test on the site is rumored.

The well is about two miles northwest of production in the Louann area and three miles northeast of the producing area in the MacDonald field near Stephens. Production there would open a wide territorial development, it was said.

Tremont officials said tonight that the test would be drilled 3,500 feet deep if oil or gas showings were not found in paying quantities sooner.

El Dorado Oil Group Enthused Over Test at New Well.

Special to the Gazette. 10-16-30

El Dorado, Oct. 15.—Members of the El Dorado oil fraternity are enthused over the showing in a drill stem test of the J. E. Crosbie, Murphy No. 1 in section 13-16-16, Sandyland area, which originally was planned as a 4,500-foot test.

A rich oil sand was encountered at 2,735-40 feet and an excellent showing was obtained in a drill stem test. The well showed about seven joints of oil in 20 minutes and was free of salt water.

Casing was taken to the location today and will be set at once for a final test. The well is believed to have the same sand as was found in the Norphlet area of the Smackover field.

The well is about a mile west of production and is an area which failed to prove productive during the Smackover boom. Some gas showings were found but little oil was encountered.

NEW PRODUCER IN RAINBOW CITY FIELD

Well Producing 1,750 Barrels Daily for Ohio Oil Company.

10-25-30

Special to the Gazette.

El Dorado, Oct. 24.—The Rainbow City field, northeast of El Dorado, which has been more or less in the background for more than a year came to the fore with a big producing well this morning.

The well is the Richard Pumphrey No. 4 of the Ohio Oil Company in section 12-17-14 and is estimated to be good for 1,750 barrels per day.

Shortly after being bailed in at 9:30 a. m. the well was placed on an inch and a half choke and was flowing steadily tonight.

The well is making pipe line oil and a test revealed it to be of 27 gravity. Completion of the well was from the Crain sand at about 3,000 feet.

The Ohio well is the first large producer at Rainbow City in more than a year. Recently the Ohio brought in the Furlow well in another part of the same section, but it was placed on the pump and is producing about 100 barrels daily.

Location of the new producer is in a section that was ignored during the drilling campaign in that area.

Ohio officials said that the rig would be moved soon from this location for the drilling of the Crain No. 10 in section 1-17-14.

The Lion Oil Refining Company is reported to have made a location recently for a well in the vicinity of the Ohio producers.

Sandyland Test Well Has Good Showing of Oil.

Special to the Gazette. 10-25-30

El Dorado, Oct. 24.—Interest was high tonight at Sandyland, where hundreds watched in apparently successful bailing process throughout the afternoon on the J. E. Crosbie, Inc., Murphy No. 1 well, an important deep test at 2,735 feet in the SE of SW of NW of section 13-16-16.

Reports here are that considerable oil is being lifted by the bailer from a depth of 1,700 feet, with no showing of water. Fluid now stands in the hole for 1,000 feet, advices said. The bailer was dropped to the hole's base several times and even better showings were encountered, it is understood.

There is no gas showing, the reports said, but speculators believe a flowing producer will result if gas is found.

RAINBOW FIELD GETS GIANT GAS WELL

Lion Oil Company Producer Making About 50,000,000 Feet Daily.

Special to the Gazette. 12-2-30

El Dorado, Dec. 1.—A monster gas well blew in late today in the Rainbow city field, 12 miles northeast of El Dorado. The gasser, first dry producer of its type in that field, is the Sullivant No. 2 of the Lion Oil Refining Company in section 12-17-14, and is blowing at the rate of 50,000,000 cubic feet a day.

The well will be allowed to blow during the night, with plans to be taken to close the well in tomorrow.

The well was completed from a depth of 2,995 feet. An oil sand also was encountered, but the gas pressure was believed so strong as to keep the oil from making a showing.

The Lion Company will bail tomorrow on the Sullivant No. 1, on the same lease, and the Ohio Oil Company is also ready to bail on the Crain No. 10, in section 1-17-14.

Marine Oil Company Well Good for 600 Barrels.

Gazette 12-9-30

El Dorado, Ark., Dec. 8.—(P)—The Marine Oil Company today reported the Thompson A-1 well, section 10-18-13, was making 600 barrels on a pumper. The Lion Oil Company well at Rainbow City was reported good for 1,250 barrels after showing originally as a 1,000-barrel producer. The Lion well is Sullivant No. 2.

Two Rainbow City Oil Wells Stage Comeback.

12-9-31

El Dorado, Ark., Jan. 2.—(P)—Two Rainbow City wells, which have been small pumpers, have staged a comeback and are now flowing more than 1,000 barrels, it was reported today. The Pumphrey No. 4, in 12-17-14, is flowing 1,000 barrels and the Crain No. 9 in 1-17-14 is flowing 1,400 barrels, company officials said. The Pumphrey well had been making around 200 barrels.

EL DORADO FIELD HAS NEW GUSHER

Ohio Oil Company Brings In Well Producing More Than 1,000 Barrels Daily.

Special to the Gazette. 4-9-31

El Dorado, April 8.—Another big producing well for the Rainbow City field has been completed by the Ohio Oil Company. The well is the Furlough No. 3, in section 12-17-14, near where other good producers have been brought in. The well is yielding more than 1,000 barrels daily.

The Ohio has been drilling one well at a time in the Rainbow City field for many months, and it is believed the single operation program will be continued.

Derrick Erected for Deep Test Well at Smackover.

4-19-31

Smackover, April 18.—A derrick has been erected and a rig put in place for a deep test well to be drilled in the Smackover field.

The well, to be drilled to a depth of 5,000 feet, was spudded in Wednesday. The test will be made on the Hays land of section 4-16-15, in the heart of the Smackover-Norphlet field.

When this test is completed, it will be the deepest well ever drilled in this field, it was said.

Hope of Deep Sand Production In Smackover Field Bolstered.

Special to the Gazette. 6-13-31

El Dorado, June 12.—Hopes for deep sand production in the Smackover field were bolstered today by the showing in test being drilled by the Lion Oil Refining Company in cooperation with the El Dorado Chamber of Commerce. An oil sand has been encountered at 4,000 feet in the Hays No. 1 in section 4-16-15.

Cores were taken from the well down to a total depth of 4,005 feet, revealing about six feet of an oilbearing formation. The cores were said to be well saturated with oil. A thorough test will be made.

Plans already had been made for setting another string of pipe for protection of the hole and this casing will be used for testing of the sand encountered Friday. Setting the pipe started late last night and will be completed in about 20 hours. The pipe will be allowed to set for about a week before the well will be drilled in.

New Well in Urbana Oil Field Yields 800 Barrels Daily.

El Dorado, Ark., July 7.—(P)—The Atkins well, second producer north of the original Urbana oil field, tonight was flowing by heads and estimated by oil men to be good for 800 barrels daily. They said there was no water.

Oil Refineries Enjoined From Dumping Waste Into Creek.

Special to the Gazette. 9-18-31

El Dorado, Sept. 17.—A permanent injunction against the Lion Oil Refining Company and the Root Refining Company, enjoining them against dumping caustic soda and sulphuric acid in Loutre creek or any of its tributaries, was granted yesterday by Judge Frank A. Youmans in United States District Court at the conclusion of trial of the Loutre creek mosquito case.

Jurisdiction of the case was retained by the court in order to make any modifications necessary. Attorneys for the plaintiff were ordered to draw up the judgment.

The injunction suit has attracted attention throughout the southern part of the state. It originally was filed in Chancery Court against eight oil companies operating in the southern part of Union county, near the Loutre creek bottoms. An injunction against the eight was sought to prevent their dumping waste matter that killed fish and caused the breeding of mosquitoes.

On motion of the defendant companies, the case was transferred to federal court and the eight cases consolidated.

Cases against the Lion and the Root companies were tried and cases against the Standard Oil Company, Gulf Refining Company, Arkansas Fuel Oil Company, Arkansas Natural, the Henderson Company and the Kettle Creek Refinery were continued.

This was done, Joe Joiner, prosecuting attorney said, because it was found that only the soda and the acid discharged by the two refineries were killing the fish. Joiner said that as long as fish were in the creek they would eat the mosquito larvae and prevent breeding.

New Gusher Expected in Urbana Oil Field.

Special to the Gazette. 9-11-31

El Dorado, Sept. 10.—A gusher for the Urbana field was indicated today by the excellent showing obtained in the drill stem test on the Norman No. 1 well of Wilson & Co., in section 3-18-13.

The test developed 26 90-foot thimbles and two doubles of pipeline oil in 15 minutes. The showing was hailed as the best obtained in the Urbana area and the best indication of a gusher-type producer since the Graves sand boom of several years ago.

No water appeared with the oil that came from a rich sand, which has been penetrated 22 feet. Top of the sand is 3,560 feet.

Sam E. Wilson, one of the owners, refused to estimate the possible producing, but said "we are confident of a big producer."

Preparations will be started at once for setting of casing for final testing. Mr. Wilson said that running of casing probably would be delayed until Saturday as every joint of the casing will be tested thoroughly before being placed in the well.

The Norman well is located in the southwest corner of the southeast quarter of the northwest quarter of section 3-18-13. The well is due east of the Adkins No. 1 in the same section, which is flowing 400 barrels, and northeast of the Parker No. 1, making 700 barrels. The Adkins well was completed from eight feet of sand while the Parker well had only four feet of oil formation. The 22 feet of sand in the Norman well is the largest amount of oil formation encountered in any well in the Urbana area.

Flow of Norman No. 1 Well Now 1,000 Barrels Daily.

Special to the Gazette. 10-15-31
El Dorado, Oct. 14.—Daily flow of the Norman No. 1, Wilson and Chapman well in section 3-18-13, Urbana area, was reported by officials today to have increased from 700 to 1,000 barrels daily. The well was drilled in last week with an estimated production of around 700 barrels, but officials had hoped the flow would increase as the hole cleaned itself.

Construction of a six-inch pipe line from the well to the Missouri Pacific railroad at Urbana and erection of a 10-car loading rack at the crossing will be completed this month.

Casing has been set in the Roy Fullenwider No. 1, in section 13-17-22, Columbia county. The pipe was set and cemented at a total depth of 800 feet. A good showing of high gravity oil sand, was encountered at that depth several weeks ago.

Smackover Deep Test Well May Be Drilled 7,500 Feet.

Special to the Gazette. 10-21-31
El Dorado, Oct. 20.—Officials of the Lion Oil Refining Company announce that the Smackover deep test well will be carried to a depth of 7,500 feet unless production is encountered above that point. Contract called first for a test to 5,000 feet, but the work was continued from that point and the well now is at 5,974 feet, and cores are being taken frequently. A six and a quarter-inch casing will be set at 6,000 feet, and the well continued. Drilling equipment on hand will take the well to about 7,000 feet.

Oil Drillers Encounter Thick Strata of Rock Salt.

Special to the Gazette. 10-31-31
El Dorado, Oct. 30.—Operations at the Lion Oil Refining Company's Smackover deep test well have been discontinued until drillers are able to dislodge the stem from a bed of rock salt 6,071 feet below the surface. The bit is stuck in a bed of solid rock salt which geologists say is unique in its thickness of 111 feet already penetrated.

The formations, believed to be of the Permian series age strata, have not been identified and geologists say they do not conform with any other cores taken in this country. The well will be carried to a total depth of 7,500 feet. If drillers are unable to recover the bit the drill stem will be hauled back to the 5,200 foot level where a slight deviation occurred in the hole and drilling will begin again at that point.

Lion Oil Deep Test Well Down 6,345 Feet.

Special to the Gazette. 11-14-31
El Dorado, Nov. 13.—Still cutting in pure rock salt, the Lion Oil deep test well in the Smackover area was drilling at 6,345 feet today, while drillers at Urbana and Lawson are preparing for completing two wells in the eastern sector of the Union county oil field.

M. E. Wilson, vice president of the Lion Oil Refining Company said today that 385 feet of salt has been penetrated during the past week. A cave-in shortly after the salt bed was encountered delayed drilling for nine days until the bit and stem were dislodged but no further mishaps have occurred in the formation. Geologists have not identified the salt bed as peculiar to any recognized strata, but the enormous quantity of the salt is not unique as wells in west Texas have drilled through as much as 1,400 feet of solid rock salt. The Smackover well will be carried to 7,500 feet or until oil in paying quantities is struck.

The Modisette-Ouachita Refinery well in the Lawson area is drilling below 2,984 feet in a salt water sand which is believed to tap the Cordell sand. Corings are being taken now. Oil in paying quantities was discovered in the Cordell sand five years ago but the field has not been developed. The well will be carried to 3,600 feet if the Cordell sand is not found.

Wilson & Chapman are pushing drilling on the Hadley No. 2 in sections 3-18-13 of the Urbana district. The well now is at 3,150 feet and Sam Wilson, official of the company, said today that the well will be completed on "four or five" days. Four other wells in the immediate vicinity are yielding a total of about 2,000 barrels a day now.

Urbana Oil Test to Be Cored at 6,652 Feet.

Special to the Gazette. Nov. 19
El Dorado, Nov. 18.—Drillers on the Smackover deep test well of the Lion Oil Refining Company are preparing to core at 6,652 feet after operators reported encountering a hard formation at that level. The well has been cutting through a thick bed of rock salt and the harder formation is believed to indicate a change in structure. Officials of the company were encouraged by the change in formation, as it was feared the rock salt structure would prove too deep for completion of a well.

The Wilson and Chapman Hadley No. 2 in section 3-18-13 of the Urbana area is being cored at 3,500 feet, where drillers are confident of striking the Urbana sand from which four nearby wells are producing 2,000 barrels daily.

Smackover Oil Field Showing Signs of Recovery.

Special to the Gazette. 11-22-31
Smackover, Nov. 21.—Showing signs of recovery from the general depression and slump in oil prices, the Smackover oil district faces the end of 1931 with brighter prospects than at any time within a year.

Many operators who deserted south Arkansas fields for the East Texas field have returned.

The advance in crude oil prices in this territory is credited with lending a tone of optimism to the petroleum fraternity.

Supply houses here and at El Dorado report an increase in business during the past few weeks.

Interest in Deep Test.
The oil fraternity is keeping a close watch on the now celebrated deep test in the Smackover field, the Hays well in section 3-16-15, being drilled by the Lion Oil Refining Company. The crew is drilling at approximately 7,010 feet in a rock salt formation. This well is the deepest ever drilled in Arkansas and will be taken to 7,500 feet if necessary. The rock salt formation shows indications of giving out after the bit has gone through 600 feet. The test is in the center of a great producing sector.

In the Urbana field Wilson & Chapman are below 3,500 feet on their Hadley No. 2 well in section 3-18-13. The firm has several good producers in this section. Modisette Drilling Company is at work on a test in section 6-18-13, near Lawson, where excellent showings were encountered four years ago. An Eastern company is at work on a test in section 1-17-16, northwest of El Dorado. Local interests are preparing to drill on a tract in the southwest part of the county. An El Dorado group is said to be planning to deepen the Coats well in section 32-19-16, about six miles west of Junction City on the Louisiana line. A fine showing was found in this test at below 4,000 feet.

One of the largest construction jobs in the oil fields recently was the building of a pipe line by Wilson & Chapman, local operators, from the Urbana field to the old port of Wilmington on the Ouachita river. The line is four-inch and about seven miles long, and will carry oil from the Wilson & Chapman wells at Urbana to be loaded on barges at Wilmington for New Orleans. The company has purchased a small refinery at New Orleans.

Smackover Deep Test Well Down 6,700 Feet.

Special to the Gazette. 11-28-31
Smackover, Nov. 28.—The Lion Oil Refining Company's deep test in the Smackover field, section 3-16-15, is drilling ahead with little change in formation. The test is now below 6,500 feet. The company plans to drill 7,500 feet if necessary to find a producing sand.

ROCK SALT FOUND IN HUGE QUANTITY

Veritable Underground World Discovered in Well Near Smackover.

Special to the Gazette. 12-13-31
Smackover, Dec. 12.—A vast store of rock salt in an almost pure state is the latest discovery in the search for deep oil production in the south Arkansas fields.

The salt bed was penetrated at the Hays deep well of the Lion Oil Refining Company in section 4-16-15, four miles east of Smackover, in the heart of the producing field. The crew has drilled through more than 1,200 feet of the salt formation and there is little indication of a change. The well now stands at 7,255 feet, the deepest ever drilled in Arkansas, and one of the deepest in the Mid-West or South. The salt was struck at around 6,000 feet, and for weeks the drill ground its way through hard formation, which in laboratory tests made by geologists showed approximately 97 per cent salt.

The drill stem is now stuck at the bottom and Lion officials say it may be several weeks before drilling can be resumed. Many oil men believe the salt bed lies above an oil sand.

The Pickering well in section 1-17-16, near Goodwin station, is approximately 2,150 feet deep and a promising oil sand has been found. The well was tested several weeks ago but failed to produce. It is drilled by Eastern interests. The test is between the northwest El Dorado field and the Saxon City district.

To Test "Wildcat" Territory.
In the south end of Union county near the Louisiana line two groups are preparing to drill in wildcat territory. Robert C. Wallingford and associates will drill in the vicinity of the W. M. Coats well, which in 1929 caused considerable speculation when it was tested at below 3,600 feet. An excellent oil sand was found but the well failed to produce, and never was completed because of financial difficulties. The new test will be in the vicinity of the old one, in township 19, range 16, about two miles from the Louisiana line and six miles west of Junction City. The second group is preparing for a well farther north.

In the Urbana field, Wilson & Chapman are working on their Hadley well in section 3-18-13, where they have several good producers. This company is preparing to ship oil by barge from Wilmington, Ouachita river port, to New Orleans. The crude will be pumped from the Urbana field to the river terminal through a four-inch line built by Wilson & Chapman.

SMACKOVER TEST MAY BE DEEPEINED

Lion Oil Refining Well Now Below 7,000-Foot Mark.

12-5-31

Special to the Gazette.
Smackover, Dec. 4.—Possibility that the Hays well of the Lion Oil Refining Company in section 3-16-15, four miles east of Smackover, may become one of the deepest oil tests in the country loomed this week as a move was started to raise money for continuing the drilling indefinitely or until oil is found.

The Lion well is slightly below 7,000 feet, by far the deepest test ever drilled in this territory. For several hundred feet the formation has been a solid rock salt bed. Oil men hope that an oil sand will be found below the salt. Rumors that the Lion is considering quitting the project soon were met with proposals to raise money among oil men by public subscription. James H. Dugan, royalty broker and operator, offered \$1,000 toward a \$25,000 fund, and others have signified they will assist.

Considerable interest is being manifested in plans of two groups of local business interests for wildcat wells in township 19, range 16, west of Junction City, and near the Louisiana line. Robert C. Wallingford and others are planning a block in the vicinity of the W. M. Coats well in section 31-19-16, and another test is planned north of this. The Coats well was drilled below 3,500 feet and an excellent oil sand found, but the well failed to produce.

Principal drilling operations in the south Arkansas area is confined to the Urbana field, where Wilson & Chapman have brought in several good producers recently. This firm is building

a pipe line from the field in section 3-18-13 to Wilmington, Ouachita river port, and will ship Urbana oil by barge to New Orleans, where a small refinery has been leased by the company.

Despite the low price of refined products, none of the plants in Union county has closed, and most of the refineries are running full time. The Simms plant here, MacMillan at Norphlet, the Cross plant south of Smackover and the Standard Oil station at Kenova are operating normally. At El Dorado the Lion Oil, the Root Refining Company, Kettle Creek and Ouachita Valley are operating daily, with some reduction in force.

Oil men in this section look for an upward trend in crude prices by the first of the year, with a consequent revival of drilling activities.

Considerable Drilling Under Way in Union County.

Special to the Gazette. 1-13-31
Smackover, Jan. 12.—Widely separated sections of Union county are gaining attention of the oil fraternity, with interest centered about a record deep test in the north end of the county and several shallow wells in scattered areas.

The latest test to be spudded in is the Davis No. 1 of H. L. Helms et al., located in the northeast quarter of northwest quarter of northeast quarter of section 31-16-14, near Quinn. The well is drilling around 800 feet, and the owners expect to go 4,500 feet if necessary. The test is about three miles north of the old Rainbow field and south of the Smackover area.

Blocking of leases for a second test near the W. M. Coats well in section 32-19-16, six miles west of Junction City, is under way. A good oil sand was found in the first well there.

Wilson & Chapman are working on their Hadley property in section 3-18-13, Urbana sector. This company plans to ship its Urbana production by barge from Wilmington on the Ouachita river to New Orleans.

Section 31 Oil Syndicate, one of the first companies organized at El Dorado during the early boom days, has drilled recently on its property southwest of El Dorado. The well is promising.

Lion Oil Refining Company shut down for a time at the Hays deep test in section 4-16-15, three miles west of here, on account of high water. The drill stem has been stuck at 7,255 feet in rock salt. The well is Arkansas' deepest.

Camden Oil Operator Invents Perforator Gun.

Special to the Gazette. 1-23-32
Camden, Jan. 22.—W. E. Rembert, local oil operator, has obtained a patent on his casing perforator gun for oil wells. His patent gives him exclusive rights on the perforation of oil wells by means of a projectile fired by an explosive. It has been found 100 per cent perfect, it is said. Two are in use, one in the California field and another in Texas.

The perforating gun is 72 inches long and fires four cartridges or projectiles especially constructed. The cartridges have steel jackets and weigh several pounds. They make a hole five eighths of an inch in diameter and will penetrate the thickest oil well casing in addition to the concrete casing, and will burrow several feet into the oil sand, Mr. Rembert said.

The bullets are placed one foot apart and are fired by a spring trigger which is released by dropping a weight upon the trigger cap at the top of the gun. The perforating gun can be loaded in to the well by means of a line or through the tubing. A lead ball weighing 1 1-2 pounds is dropped onto the gun to fire it.

Mr. Rembert said that he had perforated casings as deep as 3,000 feet, but that the gun could be lowered to any depth and fired with ease. It can be fired in any direction.

Renewed Drilling Activity in Union County.

Special to the Gazette. 3-22-32
Smackover, March 21.—Drilling operations are under way on two important wells in the Union county oil territory, and work has started on several old tests.

After being stuck for two months the drill stem in the Lion Oil Refining Company's Hays well in section 4-16-15, east of Smackover, has been dislodged and drilling has started. This well was shut down soon after Christmas at 7,255 feet in a bed of rock salt.

W. D. Wingfield and associates have resumed work on their test in township 19, range 16, near Caledonia, where a deep test is planned. Helms et al are working on their test in the vicinity of Quinn. Several old wells have recently been cleaned out and deepened. South Arkansas production averaged 32,248 barrels daily last week, Smackover leading with 21,000.

Deep Test Well in El Dorado May Be Deepened.

Special to the Gazette. 6-2-32
El Dorado, June 1.—The Wingfield No. 1 well in section 16-19-15, just outside the producing area in the old El Dorado field, has been taken to 4,500 feet, the contract depth, but a movement is on foot for deepening it. W. D. Wingfield, El Dorado, is operator.

Despite the deep level, the hole is in excellent condition and a large body of sand was encountered below 4,300 feet. It is said to be encouraging.

Wingfield Deep Test Well To Be Abandoned.

Special to the Gazette.
El Dorado, June 2.—The Wingfield deep test in section 16-19-15 immediately outside production in the El Dorado south field will be abandoned, officials of the company backing the project have announced. The well had reached 4,511 feet. Backers failed to raise funds to continue drilling.

Pipe Line May Be Built From El Dorado to Calion.

Special to the Gazette. Aug. 18, 1932
El Dorado, Aug. 17.—Possibility of laying of pipeline from El Dorado to the El Dorado landing near Calion for barging of gasoline and other petroleum products down the Ouachita river and up the Mississippi river to Eastern points is being studied by local interests following inquiries from Eastern interests.

Several letters have been exchanged between the Chamber of Commerce and concerns in Eastern states that are looking toward El Dorado for gasoline and other petroleum products. The markets in the East have been using oil from Venezuela and Roumania, but are turning toward Arkansas, Texas and Louisiana.

Drilling Resumed on Test Well in Smackover Field.

Special to the Gazette. Sept. 6-1932
Smackover, Sept. 5.—With drilling and other production activities at the lowest ebb since boom days, the south Arkansas oil fraternity finds considerable encouragement in reports of developments in this and other sectors during the past week or two. One wildcat in the Smackover area is being given attention, a test in Columbia county is reported to have struck an oil sand and many local oil men are watching the outcome of a well in Miller county.

Hope of finding another pool in the Smackover territory has been revived with resumption of drilling on the Helm et al. Berry Davis well No. 1 in the northeast of northwest of Section 31-16-16, seven miles southeast of here. The well was started in the early spring of 1932, but was shut down last May because of financial difficulties. The crew has cleaned out the hole and drill-

ing again is in progress at around 2,400 feet. The well is half way between the Smackover and Rainbow pools and the area is looked upon favorably.

Producers in the Urbana field have been cheered by action of the Standard Oil Company in resuming purchase of Urbana crude after a lapse of a year. The Standard is taking approximately 1,500 barrels a day from the Marine and Wilson & Chapman leases. For several months there was hardly a market for this field, and much oil was stored.

Of less cheerful note is announcement that the Bradley field in Lafayette county will be abandoned after having produced 268,000 barrels of oil since it was discovered in 1926. The Arkansas Fuel Company, which owns the field, has contracted with Earl Patterson to pull casing on the seven wells in the area. Salt water is said to have encroached and ruined the oil.

Wildcat wells in two other sections of south Arkansas are attracting attention. The Fullenwider test in Section 13-17-23, Columbia county, is reported to be showing oil at 2,300 feet, and a test is planned in a short time.

Drilling Resumed in Pigeon Hill Test Near El Dorado.

Special to the Gazette. 12-29-32
El Dorado, Dec. 28.—Joe Hurley resumed drilling on his Pigeon Hill test well in section 9-17-12 yesterday, while Wong Hing, trustee, in Union parish, Louisiana, was awaiting arrival of fuel oil for a drill stem test. Surface casing has been set on the Hurley test, which is in wildcat territory. There have been few recent developments in the Junction City territory, where several wells are going down. Operators were forced to shut down because of bad weather and are now awaiting fuel oil.

Well Will Be Drilled in Old West El Dorado Field.

Special to the Gazette. 1-11-33
El Dorado, Jan. 10.—The Henderson Oil Company has located in the northwest corner of the northwest corner of section 1-18-16 for a 3-600-foot well in the corner of the old West El Dorado field. The well will probe strata under that in which the Busey-Armstrong discovery well was brought in 11 years ago. The old El Dorado sand was found at the 2,900 to 3,000 foot level. Derrick will be set up this week, and drilling probably will get under way early next week. The location was made by Frank Burnside, local engineer. The acreage was blocked by Dr. J. R. Rowland. Joe Modisette will drill the well.

Wadley and Evans have shut down their well in section 35-19-17 at a depth of 3,500 although it was announced last week that the well would be taken to the trinity level.

The W. A. Graves-Patterson well in 31-19-16 is being held up temporarily while operators are negotiating for a heavier rig.

Oil Activity in El Dorado And Strong Areas Continues.

Special to the Gazette. 3-9-33
El Dorado, March 8.—Oil activities in this locality continue regardless of financial ills. Greatest interest is in the vicinity of Strong.

Surface casing has been set by Beard et al on the Bennett No. 1 in the NW-SW of 13-19-13 southwest of Strong and in the Tom Nash et al., east of Strong in section 19-18-11.

Rig is now being moved onto the location of the Henderson Company in the NE-NW-NW of 1-18-16 just west of El Dorado. Wingfield et al., has a derrick up near Bolding on location in 9-19-11, but the rig has not yet been set up. To the north between the Louann and Stephens fields surface casing has been set in the 3,000-foot test of Bilberry et al., in 5-16-18.

According to information received here, Sam Richardson is preparing to drill on a location centering in 23-16-14 between the Smackover and Rainbow fields.

Casing Collapses, Bailing Of Ogden No. 1 Halted.

Special to the Gazette. 10-20-33
El Dorado, Oct. 19.—Bailing on the Henderson and associates' Ogden No. 1 wildcat well in section 32-18-14, east of the El Dorado South Field, was temporarily halted early yesterday when the casing collapsed while the crew was at work. The well had been bailed down until about 1,800 feet of fluid stood in the hole. Considerable oil was being brought up, and the gas showing was strong, it was reported. The casing collapsed at 1,430 feet. A new string, probably four and a half inch, will be set and operations resumed by the latter part of the week. The Ogden well, drilled by Col. E. R. Henderson of Memphis and local associates, is located in the northwest corner of southwest of southeast of section 32, and is about five miles east of the El Dorado field and about the same distance southeast of the Jones & Grimes field. Bailing was commenced at 2,168.85 feet.

Casing Collapses, Location Of Oil Test Changed.

Special to the Gazette. *Dec 25, 1933*
El Dorado, Oct. 24.—A difficult fishing job on the Ogden No. 1 well of Col. E. R. Henderson and associates in section 32-18-14, east of the El Dorado south field, has resulted in skidding over the derrick a short distance and the starting of a new hole.

Drilling on the new hole was started late Saturday, and surface casing has been set.

The fishing job developed when the casing collapsed while bailing was in progress at a depth of approximately 2,175 feet. For a time it was believed the parted casing and other equipment could be removed from the well, but the task proved too expensive.

Crew on the Alworth well in Columbia county, between Village and Magnolia, is reported preparing to deepen. The test is approximately 1,875 feet deep.

Frank G. Harrell is reported drilling on his test west of the McDonald field near the intersection of Ouachita, Union and Columbia counties. The well is in Ouachita county, section 35-14-18, and Harrell is reported to have a block of about 2,000 acres assembled.

Considerable Activity in Oil Field Near El Dorado.

Special to the Gazette. *10-31-33*
El Dorado, Oct. 30.—Along with word that casing had been set on the Ogden No. 1 test of Col. E. R. Henderson and associates in section 32-18-14, east of the El Dorado south field, came news of a new well to be drilled in the Urbana field.

The Henderson crew set six-inch casing at approximately 2,165 feet, and probably will test in the next few days. The well is only 24 feet from a first test drilled several months ago. The derrick was skidded over and a new hole started 10 days ago when the casing parted during bailing operations and the fishing job proved too slow and expensive.

Marine Oil Company has about finished rigging up on its Union Sawmill Company No. 2 in the northwest corner of southeast of southeast of section 3-18-13, Urbana field. Marine has several good producers in that vicinity.

F. G. Harrell is going ahead with his well in the southwestern part of Ouachita county. The well is near the McDonald field.

Much Activity In El Dorado Oil Field.

Special to the Gazette. *11-21-33*
El Dorado, Nov. 20.—Developments in the South Arkansas oil territory moved swiftly during the past few days, and a resume today of the past week's activities showed two new wells about to be started, standard rig almost completed on a promising test and the reported finding of oil sand in two semi-wildcat locations, while good progress was being made on an offset in proven territory.

Frank Harrell, drilling on the Poinddexter No. 1 in the northwest quarter of section 35-15-18, southwestern part of Ouachita county, reported yesterday that he has struck a good sand at 2,308 feet, and will set casing. The bottom of the hole is 2,340 feet, the depth from which oil is being produced in the Louann field.

A few miles west of Harrell, in the Stephens area, O. F. Whitaker is reported to have found a rich oil sand on the Guttery No. 1 well in section 11-15-20. Casing has been set at 2,210 feet, and the test will be drilled in within a week or 10 days.

Henderson and associates' Ogden No. 1 in section 32-18-14, west of Hillsboro, is being rigged up for pumping and reports were last night that the pump will be started in the next three or four days. Henderson is planning another well in the vicinity of the Ogden, but location has not been announced.

Marine Oil Company is around 3,000 feet on the Union Sawmill No. 2 in section 3-18-13, Urbana field, and probably will be in the pay sand within a week or 10 days.

Dan Brooks is reported preparing to move rig in on his wildcat test in section 34-19-18, in the Three Creeks vicinity near the Louisiana line in the southwestern part of Union county.

Sam Richardson is said to be about ready to start operations on a block just outside the El Dorado city limits on the northwest side.

Casing in Poinddexter No. 1 Well May Be Set Today.

Special to the Gazette. *Nov 19, 1933*
El Dorado, Nov. 18.—Frank G. Harrell is preparing to set casing in his Poinddexter No. 1 well in the northwest quarter of section 35-15-18, he announced in El Dorado today. Setting of casing will get under way tomorrow or Monday. The pipe will be allowed to set for about a week before testing operations are started.

Harrell reported a good sand was encountered in the well from 2,308 to 2,315 feet. Bottom of the hole is 2,340 feet, the depth of the sand from which production is obtained in Louann field.

The Whitaker well in the Stephens area has reached the sand and the crew is now engaged in setting casing, according to reports. A good sand is said to have been encountered at 2,210 feet. The well is located about half a mile east of the discovery well in the Stephens field.

Deep Oil Test to Be Started In Union County.

Special to the Gazette. *Nov 23, 1933*
El Dorado, Nov. 22.—Assurance of another deep oil test for Union county within the next several weeks, was given with the filing of a lease and drilling contract involving the transfer of oil and gas drilling rights for the Stout Lumber Company to William A. Graves of El Dorado.

The lease contract was filed at the circuit clerk's office and specifies the lands as lying in sections 5, 7 and 18-16-14, and sections 13-16-15, about half way between Callon and the east edge of the Smackover field.

The contract calls for a well to be started not later than December 18, and for the test to be drilled to not less than 5,000 feet.

A total of 895.44 acres is included in the lease block, all in what is termed strictly wildcat territory, the nearest producing being in section 2-16-15, Smackover field. Shallow tests made in the vicinity have yielded good showings.

New Location for Oil Test May Be Made Near Ogden.

Special to the Gazette. *Nov 29, 1933*
El Dorado, Nov. 22.—With standard rig about ready to perform on the Ogden No. 1 well in section 32-18-14, where a fair commercial pump is hoped for, Col. E. R. Henderson and associates are expected soon to announce a new location in the vicinity of the Ogden. Henderson has a large block of acreage in the territory west of Hillsboro. Should the Ogden prove a good well it is likely that an intensive drilling campaign will be started.

Marine Oil Company is drilling at around 3,100 feet on its Union Sawmill No. 2 in the northwest corner of southeast of southeast of section 3-16-14, and expects to hit the oil sand at approximately 3,500 feet by the first of next week. This well is between two good producers. The Marine has about 2,000 barrels a day from its holdings. The company has other tentative locations, including an offset to the one now drilling.

Prospect of a wildcat test in the southwestern part of Union county is drawing considerable interest. Dan Brooks has derrick up on his location in section 34-19-18, a short distance north of the Louisiana line.

Good Oil Showing Made By Test in Urbana Field.

Special to the Gazette.
El Dorado, Dec. 1.—Another good producer for the Urbana oil field is in prospect with announcement that the Marine Oil Company yesterday struck the producing sand in its Union Sawmill No. 2 test in section 3-18-13 at around 3,560 feet, approximately the same level as that from which other wells in the Urbana territory are producing.

New Urbana Field Well Good For 150 Barrels Daily.

Special to the Gazette. *Dec 9, 1933*
El Dorado, Dec. 8.—The Union Sawmill No. 2 well of the Marine Oil Company was brought in this morning and though not flowing was estimated good for 150 or 200 barrels of oil a day. The well is located in section 3-18-13 in the Urbana field.

Another producer was added to the west side of the Stephens field when O. F. Whitaker brought in his Guttery No. 1, in section 11-15-20, said to be good for upwards of 30 barrels.

Tests Expected in El Dorado District.

Special to the Gazette. *Dec 19, 1933*
El Dorado, Dec. 19.—With three or four Union county shallow oil tests under way, considerable interest is being shown in prospective deep tests, following work on one location and talk on other proposed deep searches, a resume of activities during the past week in the El Dorado oil district shows.

W. A. Graves has moved material on the ground for the start on his 5,000-foot test in section 18-16-14, between Callon and the Smackover field. The test is to be drilled near the center of the section and, according to contract, must be started by December 18.

Marine Oil Company is expected to start drilling soon on the Thompson D-2 in the northwest corner of southwest of southeast of section 3-18-13, Urbana field. The well is a location east of the Union Sawmill No. 2, which has been flowing 75 to 100 barrels a day by heads since it was completed more than a week ago.

Three other Union county wells are drilling above the shallow sands. They are Sam Richardson, J. P. Hammonds No. 1 just northwest of El Dorado; Dan Brooks, Murphy Land Company No. 1 in section 34-19-18, near Three Creeks; and Col. E. R. Henderson and associates, Vines No. 1 in section 29-18-14, at Hibank.

Interesting Developments in Oil Field Expected.

Special to the Gazette. *12-28-33*
El Dorado, Dec. 27.—The last week of the old year is expected to bring some interesting developments in the South Arkansas oil field despite the usual lull that accompanies the Christmas season.

The Marine company is expecting arrival this week of its standard pumping rig for the Union Sawmill No. 2 well in the northwest corner of the southeast quarter of the southeast quarter of section 3-18-13 in the Urbana field and will set it up and start pumping soon.

The Marine is below 2,200 feet on the Thompson D-2, an offset east of the sawmill well. The sand is encountered in the Urbana field at around 3,550 feet.

Of considerable interest in this section is the deep test of W. A. Graves in section 18-16-14 between Callon and the Smackover field. Work has been started on the location and the contract calls for a depth of 5,000 feet.

Sam Richardson is reported near the Nacatosh sand on the J. P. Hammonds well in section 19-17-15 just northwest of the El Dorado city limits.

Two other wells are being drilled in Union county. They are the Murphy Land Company No. 1 of Dan Brooks in section 34-19-18 and the Vines No. 1 of Col. E. R. Henderson and associates in section 29-18-14.

Holidays Bring Lull in El Dorado Oil Activity.

Special to the Gazette. *1-3-34*
El Dorado, Jan. 2.—Though the Christmas season and New Year brought a lull in oil activities in this section last week, a survey shows that there were several developments of interest.

The crew of the Marine Oil Company drilling on the Thompson well in section 3-18-13 in the Urbana field, is approximately 3,200 feet down and with normal working conditions will reach producing sand in a week or 10 days. The producing sand in the Urbana field is found at around 3,560 feet.

The Marine has started erecting machinery on its Union Sawmill No. 2 in the same section just west of the one now drilling on the Thompson field. The sawmill well has been flowing by heads at about 75 barrels per day for more than a month. It is expected the pumping rig will be in operation within a week.

The crew of the Hammond No. 1 of Sam Richardson just northwest of the El Dorado city limits is waiting orders to set casing. The well was tested at 2,144.56 feet and showed some oil.

W. A. Graves has derrick up on the Stout Lumber Company tract in section 18-16-14, between Callon and the Smackover field, where he will drill to a 5,000-foot depth unless oil or gas is found at a shallower depth. Work on the location was to be resumed this week and the well will likely be spudded in soon.

Dan Brooks is down 2,400 feet on the Murphy Land Company No. 1 well in section 34-19-17, near Three Creeks. Contract calls for a depth of 3,500 feet, if necessary.

Col. E. R. Henderson and associates are shut down on the Vines test in section 29-18-14 at Hibank and will start again soon. The test is now around 1,600 feet, and plans are being made for a deep well.

A deep test of much importance in this section is to be started soon in Ashley county on a block of 30,000 acres. The test is to be known as the K. R. March, trustee No. 1 J. H. Williams, and is located in the center of the northwest quarter of southwest quarter, section 8-16-4, Ashley county. Several major and independent companies are said to be interested in the block. Derrick has been built and pits are being dug.

Unfavorable Weather Holds Up El Dorado Oil Activity.

Special to the Gazette.
El Dorado, Jan. 9.—Unfavorable weather caused slackening of activity in the wildcat and field operations of the south Arkansas oil territory last week.

Center of interest now is the Urbana field, where the Marine Oil Company is working on two wells, one rigging up to pump and the other with casing set with fine prospects of checking up another producer.

The Marine set casing on its Thompson D-2 in the northeast corner of southwest of southeast of section 3-18-13, at 3,544-53 feet, after taking a core earlier in the week. Marine has about completed setting up standard rig on the Union Sawmill No. 2 in the northwest corner of southeast of southeast of section 3, which was brought in late in the fall, and has been flowing by heads at the rate of around 75 barrels a day. It is believed when pumping rig is started, which will be some time this week, it will make in the neighborhood of 150 barrels.

Henderson and associates are still closed down on the Vines well in section 29-18-14, at Hibank, due to high water and condition of roads.

The Richardson well was reported to have shown some oil in a drill stem test, but decision on setting casing has not been announced. The test is located near production just northwest of the El Dorado city limits.

Dan Brooks is drilling at around 3,350 feet and the crew is having trouble with high waters. The well is located in section 34-19-18, near Three Creeks.

Smackover interests have set surface casing on a test north of Buckner and about three miles east of the George Harper test, which showed indications of oil at around 1,100 feet.

W. A. Graves has material on the ground for his deep test in section 18-16-14, near Callon, but unfavorable weather has held up work.

Wildcats Showing May Mean New Shallow Pool

El Dorado, Jan. 16.—(Special.)—Promises of a new oil sand in strictly wildcat territory loomed here today, following the coring last night of an excellent formation on the Vines No. 1 well of Col. E. R. Henderson and associates, in section 29-18-14, at Hibank, according to reports this morning.

Cores taken from the well in the Nacatosh sand last night showed a heavy oil formation, it was said, and since the formation is checking higher than the Ogden well, in section 32-18-14, about a mile to the south, where a small producer was brought in, the owners believe they have the possibility of a new shallow pool.

Casing will be moved to the location today and set as soon as possible, it was announced here.

The Vines well is located in the southwest corner of the southwest quarter of the southwest quarter of section 29, and is the fifth well to be drilled on a series of large tracts held by Col. Henderson and associates in that territory. The others were the Snyder, the Patterson, the Ogden Nos. 1 and 2. The Vines well is four miles from the nearest production, with the exception of the Ogden in section 32.

Activity in El Dorado's Oil Area Limited in Scope.

Special to the Gazette. *1934*
El Dorado, Jan. 23.—Activity in the El Dorado oil territory during the past week was centered in a comparatively small area.

Among the highlights was the setting of casing on the Col. E. R. Henderson Vines No. 1 in the southwest corner of the southwest quarter of section 28-18-14 near Hibank. The well showed a promising oil sand last week in the Nacatosh sand and will be tested at 2,196 feet. The well is about four miles from the nearest field and is a mile north of the Ogden test which made a small producer.

Another test of interest which is a new one is the Gaddy No. 1 of Dan Brooks in the southwest corner of the southeast quarter of the northwest quarter of section 14-17-14 in the Rainbow field. The crew is ready to resume drilling this week after a shutdown last week to install larger boilers.

The Union Sawmill No. 2 well of the Marine Oil Company has been placed on the beam. The well is reported gauging around 100 barrels per day which is a gain over the flow by heads. The well is located in the northwest corner of the southeast quarter of the southeast quarter of section 3-18-13.

The Marine company has another well producing about 50 barrels per day in its Thompson D-2 in the northeast corner of the southwest quarter of the southeast quarter of section 3-18-13 completed about a week ago. Both wells are in the Urbana field. The company plans to drill other wells in that vicinity.

Frank G. Harrell has completed his Poinddexter test in section 35-15-18 in Ouachita county and expects a small producer.

Sam Richardson has abandoned the J. P. Hammonds No. 1 test just northwest of the El Dorado city limits at a depth of approximately 2,207 feet.

Work on the March trustee well on the J. H. Williams tract in Ashley county has been postponed because of title details.

Interest is centering in Miller county where C. E. Murdock completed the Smith No. 1 at a depth of 3,950 feet. The well is standing full of oil and some operators believe it will make upwards of 500 barrels per day. It is located in the southeast corner of the southeast quarter of the southwest quarter of section 29-15-26.

Activity in Urbana Oil Field Being Continued.

Special to the Gazette.
El Dorado, Jan. 24.—The Urbana oil field is continuing its activity following successful completion of its second well in the small but prolific field within the past two months, the Marine Oil Company is going about setting up rig to drill another. The latest location is the Thompson E-2, located in the northwest corner of northeast of northeast of section 10-18-13, a quarter-mile south of the Union Sawmill No. 2, and an offset to the Sawmill No. 1. Rig is being set up this week.

The newest producer in the El Dorado district, the Thompson D-2 of the Marine, is flowing 35 barrels a day, an average of one head a day. The oil is of the same gravity as that from other areas of the field. The well was brought in from around 3,560 feet, and is located in the northeast corner of southwest of southeast of section 3-18-13. Standard rig is being built.

The Union Sawmill No. 2 well, completed in the fall, is gauging 100 barrels a day on the pump. Standard rig was erected only a week or so ago. Previously the well flowed 80 barrels a day by heads. The No. 2 is located in the northwest corner of southeast of southeast of section 3, and is 3,560 feet deep.

Dan Brooks has set surface casing on the Caddy No. 1 in the southwest corner of southeast of northwest of section 14-17-14, Rainbow area.

Interest is manifested in the Vines No. 1 of Col. E. R. Henderson and associates in section 29-18-14, at Hibank, where a good sand was found in the Nacatosh formation. It is four miles from the nearest production.

Explorers Continue Work in Oil Fields of South Arkansas.

Special to the Gazette. *2-6-34*
El Dorado, Feb. 5.—The familiar chug of mud pumps and the clank of rotary rigs resounded in widely separated sectors of the Union county and South Arkansas oil territory during the past week as explorers continued efforts to uncover new oil production.

The Marine Oil Company is drilling at around 2,500 feet on the Thompson E-2 in the northwest corner of northeast of northeast of section 10-18-13, Urbana field. This well is south of two good producers recently completed.

The Marine is preparing to pump its Thompson D-2 in the northeast corner of southwest of southeast of section 3-18-13, which has been flowing by heads at the rate of about 35 barrels a day.

Col. E. R. Henderson and associates last night were making preparations to bail in the Vines No. 1 well in the south part of section 29-18-14, at Hibank, where a good sand was uncovered in the Nacatosh sand.

Dan Brooks is reported drilling at around 2,500 feet on the Gaddy No. 1 in the southwest corner of southeast of northwest of section 14-17-14, Rainbow area.

Mrs. M. O. Jones is working on a test in the southeast corner of northwest of northwest of section 28-16-14. This location is north of the Rainbow field and southeast of the Smackover area.

Reports here are that March, trustee, is going ahead on the deep test in Ashley county, on the J. H. Williams land, a tract of 30,000 in which several major and independent companies are interested.

A new well is said to be near the starting stage south of the McDonald field in the southwestern part of Ouachita county.

El Dorado Refinery Increases Output With New Unit.

Special to the Gazette.
El Dorado, Feb. 6.—The Lion Oil Refining Company has just completed a 2,000-barrel virgin gas-oil cracking unit which brings the daily capacity of its refinery here to 10,000 barrels. The new unit is one of several recent improvements at the refinery. The Lion is contemplating additional improvements, Col. T. H. Barton, president, said.

Good Oil Sand Found in Test In Urbana Field.

Special to the Gazette. *2-14-34*
El Dorado, Feb. 13.—Prospects of another producing well in the Urbana oil fields were improved late this afternoon when a crew for the Marine Oil Company made a drill stem test on the Thompson E-2 in section 10-18-13 and found a good oil sand. The Marine will set casing on the newest test in that small but prolific field soon, officials said today.

The oil sand was struck at approximately the same level as in other nearby wells of the Marine, around 3,550 feet.

Excellent Oil Sand Found In Old Rainbow Field.

Special to the Gazette.

El Dorado, Feb. 22.—The Rainbow field in the east central part of Union county, almost forgotten during the past year has attracted attention in the past few days.

Dan Brooks has uncovered a good sand in the Gaddy No. 1 well in the southwest corner of the southeast quarter of the northwest quarter of section 14-17-14 in the edge of the Rainbow field. The test probably will be completed in the next few days. The well is slightly below 3,100 feet.

The Marine Oil Company has set casing on the Thompson E-2 in the northwest corner of the northeast quarter of the northeast quarter of section 10-18-13 in the Urbana field after finding a good sand. The Marine has completed two good producers in the Urbana field recently.

Col. E. R. Henderson and associates are going deeper on the Vines well in section 29-18-14 which was brought in from the Nacatosh sand and bailed considerable high gravity oil.

Mrs. R. K. Jones is working on the J. M. Davis No. 1 test in the southeast corner of the northwest quarter of the northwest quarter of section 28-16-14 between the Rainbow field and the east extension of the Smackover area.

Lown and associates are working on a test in the vicinity of Stamps.

George Harper recently called to the management of the El Dorado baseball club, has set casing on his Bodcaw-Reed test in Lafayette county at below 1,200 feet and expects to drill in soon. The well showed a fine oil sand. Harper drilled on a block of about 12,000 acres.

100-Barrel Well Completed In Urbana Field.

Special to the Gazette.

El Dorado, March 2.—Completion of another well in the Urbana field by the Marine Oil Company good for approximately 100 barrels a day, and deepening of the Gaddy No. 1 well of Dan Brooks in the Rainbow field after it made a showing of oil at 3,100 feet, featured oil activities in south Arkansas this week. Drilling operations are under way on four other tests in this section, and two wells have been started in other sections of Arkansas.

The third well since last fall was completed by the Marine Oil Company in the Urbana field when the Thompson E-2 was brought in for an estimated production of 100 barrels a day. Completion of the well, which is located in the northwest corner of the northeast quarter of the northeast quarter of section 10-18-13, places the small Urbana field at the top of the list as a producing field in this section. The well was brought in from a depth of approximately 3,550 feet. The company plans to build standard rig and put the well on the pump.

After making a good oil showing in a sand at 3,100 feet, the Gaddy No. 1 well of Dan Brooks is being deepened and the formation is checking favorably at the lower depth. The well is located in southwest corner of the southeast quarter of the northwest quarter of section 14-17-14 in the Rainbow field.

Surface casing has been set on the Davis well of Mrs. R. K. Jones in the southeast corner of the northwest quarter of section 26-16-14 near Calion.

A new test has been started about two miles north of Pine Bluff by King and Shumaker and the Clark Oil Company is starting a wildcat test in northern Hempstead county.

High Water Curtails Production In South Arkansas Oil Fields.

Special to the Gazette.

El Dorado, March 7.—High water in the Smackover creek area of the South Arkansas oil fields has caused shutdown of pumping wells in that area and also has curtailed drilling activities.

Dan Brooks is continuing operations on his test in the Rainbow area and the Marine is preparing to erect standard rig on its latest producer in the Urbana sector.

The Marine expects to make a good pumper out of its Thompson E-2 in the northwest corner of the northeast quarter of the northeast quarter of section 10-18-13 completed 10 days ago. The well is flowing by heads at a rate of about 50 barrels a day.

Col. E. R. Henderson and associates have halted activities on the Vines No. 1 at Hibank because of high water. The well, which is located in Section 29-18-14, is below 2,400 feet. The well loomed as a producer at the Nacatosh sand level.

The Gaddy No. 1 of Dan Brooks in the northeast corner of the southeast quarter of the northwest quarter of section 14-17-14 in the Rainbow field which is being deepened is below the 3,400-foot level.

After a good sand was encountered at the 1,200-foot level, George Harper, manager of the El Dorado baseball

Marine Oil Company Starts New Test in Urbana Field.

Special to the Gazette.

El Dorado, March 10.—The Marine Oil Company, which resumed operations several months ago, has started a new test in the Urbana field. Workmen are building a derrick for the Simmons No. 2 test in the southeast corner of the northeast quarter of the northwest quarter of section 10-18-13.

Standard rig is being erected for the Thompson E-2 in the northwest corner of the northeast of the northeast of section 1-18-13. This well flowed by heads at the rate of 50 barrels a day. After a shutdown due to high water, drilling has been resumed on the Vines No. 1 wildcat of Colonel Henderson and associates in Section 29-18-14 at Hibank. The well is below 2,500 feet. Work is being continued on the Gaddy No. 1 well of Dan Brooks in the southwest corner of the southeast of the northwest of section 14-17-14. The well is below 3,400 feet.

Interest Centers in Miller County Oil Field.

Special to the Gazette.

El Dorado, March 21.—The latest test in the El Dorado area is the Marine Oil Company's Simmons No. 2 in the southeast corner of the northeast quarter of the northwest quarter of section 10-18-13, which is drilling below 2,100 feet.

Dan Brooks has temporarily shut down on his Gaddy No. 1 in the southwest corner of the southeast quarter of the northwest quarter of section 14-17-14 in the Rainbow field, pending decision to drill deeper. The well is down 3,400 feet.

Much interest is shown in the Poin-dexter Estate No. 1 of T. P. Lester, in section 34-15-18, near the McDonald field in Ouachita county. The crew is coring for the Louann sand at 3,218 feet.

Drilling on the wildcat of Colonel Henderson and associates has been delayed by a fishing job. It is the Vines No. 1 in section 29-18-14, at Hibank. The well is at a depth of 2,650 feet. Work will be resumed in a short time.

The crew is preparing to drill deeper on the Bodcaw-Reed No. 1 of George Harper, in section 26-15-22, in Lafayette county, because of inability to cut off salt water after a test of a good sand below the 1,200-foot level.

Good progress is reported on the deep test well of K. W. March, trustee and associates on the J. H. Williams test in Ashley county. This well is on a block of 30,000 acres and several major and independent companies are reported interested.

C. E. Murdock of El Dorado is preparing to make another location in the Garland City field of Miller county. He has four producing wells in that area.

The Texarkana Oil Company is planning to make two tests and derrick is being built for a new test by Timberlake and associates.

Deep Test Well Planned For Rainbow City Field.

Special to the Gazette.

El Dorado, April 27.—Announcement of plans for a deep test well in the Rainbow City field and revived interest in wildcat tests in the Miller county field featured oil activities in south Arkansas this week.

Interests in wildcatting centers around the Young operations in section 5-19-23, about 25 miles south of Texarkana where a showing was said to have been obtained at around 3,666 feet. Preparations are being made for a drill stem test soon.

A deep test in the Rainbow City field is planned. A block of leases is being assembled in the northwest side of the proven area centering around sections 3, 4, 5, 8, 9, and 10 in township 17, range 14, for a 5,000-foot test. The block is being assembled by John Messenger and associates.

Another deep test in wildcat territory in Miller county will be drilled by J. K. Wadley in the vicinity of Fouke in the southwest corner of the southwest quarter of section 24-17-27.

Derricks have been erected for two tests and blocking of acreage is under way for two others in Hempstead county, while just across the line in Lafayette county, C. V. Lenz, discoverer of the Miller county field near Texarkana, is preparing to drill a test on the Foster estate land.

Three new tests are under way in the Miller county field. C. E. Murdock is rigging up for an offset to the discovery well in section 33-15-16 and the Texarkana Oil Corporation is drilling around 1,500 feet on a test in section 34-15-26, about half a mile east of production. Frank Rowe is starting a test in section 4-16-26 in the south of the proven area.

In the Urbana area the Marine Company is drilling on the Union Sawmill Company No. 1, in section 2-18-13. The well is in the northwest corner of the southwest quarter of the southwest quarter of the section, and will move production to the east if a producer is obtained.

Big Creek Oil and Gas Corporation. Little Rock; articles of incorporation; M. F. Hart, J. H. Davis and J. R. Riley Jr., incorporators.

Rain Hampers Oil Field Work In El Dorado Area.

Special to the Gazette.

El Dorado, March 26.—The heaviest rain in more than a year was recorded in south Arkansas when more than 5 1-2 inches of rain fell over the week-end. Damage to graveled highways in this section has resulted, and flooded bottoms in the Smackover creek area will handicap operations in the oil field. Smackover creek and smaller streams are flooded and many pumping wells in that area have been shut down.

County roads in several sections have been rendered practically impassable. Automobile wrecking companies here reported numerous wrecks on the highways and many cars "drowned out" or stuck when they left the highway.

With the Ouachita river rising rapidly and expected to reach flood stage at Camden by Wednesday, the Smackover creek area probably will remain flooded all this week.

The rain was general over south Arkansas with downpour of from four to more than five inches recorded in various towns throughout this section.

Another Big Oil Deal Reported In El Dorado Sector.

Special to the Gazette.

El Dorado, March 30.—Earl W. McFall, acting as agent for an oil company the set-up of which has not been announced, in addition to buying the E. L. Chapman interests in the Urbana field at a receiver's sale here this week, will acquire the interests of Sam E. Wilson Jr., a move which would give the new organization 100 per cent interest in the Wilson & Chapman properties instead of Mr. Wilson retaining a half interest as reported, it was said here today. In addition it was said that Mr. McFall has acquired approximately 500 acres adjoining the Wilson and Chapman properties at Urbana, giving the new company around 1,000 acres in that area.

It is expected that the company acquiring the properties will start an intensive development program as soon as titles are approved.

Purchases of the Chapman interests, Wilson interests and the added acreage require an outlay of capital considerably in excess of \$100,000.

Marine to Drill Outside Test In Urbana Field.

Special to the Gazette.

El Dorado, April 12.—Following completion of another producing well in that area, the Marine Oil Company is preparing to drill an outside test in the Urbana field. Derrick is being erected for the new test, the Union Sawmill Company B-I in the northwest corner of the northwest quarter of the southwest quarter of section 2-18-13. This will be the first test in that section. The location is across a 40-acre tract from a producing well on the Wilson and Chapman properties recently taken

over by a new company now being organized, and takes development to the east of the present Urbana producing area.

The latest Marine producer is the Simmons No. 2 in the southeast corner of the northeast quarter of the northwest quarter of section 10-18-13. The well is flowing at the rate of 90 barrels a day while awaiting on standard rig.

The Marine now has 12 producing wells in the Urbana field.

Rains Delay Operations in Oil Fields Near El Dorado.

Special to the Gazette.

El Dorado, March 28.—There is little activity in the south Arkansas oil fields this week due to the heavy rains over the last week-end which flooded most of the oil fields in the Smackover territory and hampered operations in other sections. Some progress was made on new wells before the rains, and work is expected to be resumed as soon as conditions permit. It has been rumored that several new locations will be made soon.

Urbana Field Extended Quarter Of A Mile by New Well.

Special to the Gazette.

El Dorado, May 12.—The producing area in the Urbana field was extended a quarter of a mile to the east with the bringing in of another well by the Marine Oil Company. This well is the Union Sawmill Company No. 1 in the northwest corner of the southwest quarter of the southwest quarter of section 2-18-13.

Flowing by heads, the well is expected to be good for about 100 barrels daily on the pump. Plans call for standardization of the well at once. This is the first well to be drilled in that section. Location has been made by the Marine for another test in the Urbana field. This will be the Thompson E-1 in section 10-18-13 on a tract which now has a number of producing wells.

Acid Treatment Given Test Well Near Hibank.

Special to the Gazette.

El Dorado, May 23.—The pumping of acid into the wildcat well of Col. E. Randall Henderson and associates in section 32-18-14, near Hibank, was completed Sunday night and opening of the well is scheduled for tomorrow afternoon.

Under the direction of C. E. Mangold, district superintendent of the Dowell Chemical Company of Midland, Mich., 500 gallons of acid were pumped into the well under 900 pounds of pressure. The well was closed under the same pressure and will remain that way until reopened.

Wildcat Well Flows After Given Acid Test.

Special to the Gazette.

El Dorado, Ark., May 24.—(P)—Opened after acid had been pumped into the hole for the first time such a method had been used in an Arkansas oil field, the Ogden No. 1 wildcat well of Col. E. Randall Henderson of Memphis flowed for a short time this afternoon.

The well, located in section 32-18-14, near Hibank, 12 miles southeast of El Dorado, flowed at the rate of a barrel a minute for 13 minutes. Further testing is scheduled tomorrow when the well will be swabbed in the hope it will flow. The owners and others who were at the well were pleased with the showing and were confident if it does not flow it will make a good pumper, probably good for 200 barrels or more daily.

If a producer results in the well, it will mean a big extension of the producing area, oil men predict, since the well is four miles from other producing ones.

Sale of Lion Oil Property To Shell Confirmed.

Special to the Gazette.

El Dorado, May 24.—Recent news dispatches from Texas telling of the sale by the Lion Oil Refining Company of El Dorado to the Shell Petroleum Corporation of portions of the company's oil properties in Rusk county, East Texas, were confirmed here this afternoon by Col. T. H. Barton, president of the Lion company.

In announcing closing of one of the biggest oil deals involving an El Dorado company in recent years, Colonel Barton said the properties were sold to the Shell corporation at a price of approximately \$1,500,000. About \$1,000,000 of the purchase price was in cash.

The properties consisted of about 210 acres of oil land and 28 producing wells with a daily production of 1,000 barrels. In addition to the producing leases, warehouse stock and pipe lines of the Lion company were involved in the deal.

The El Dorado company did not dispose of all its holdings in Texas. The Lion retains other properties in Rusk county and also retains all of its holdings in Winkler and Glasscock counties and the greater portion of the company's production remains in Texas fields.

Oil Interest Centers in Test Near Hibank.

Special to the Gazette.

El Dorado, May 30.—Most activity in the El Dorado oil district centered in the Urbana field today, where one well is on the sand, another is being drilled and a third is ready to start, but chief interest was in the wildcat well near Hibank, southeast of El Dorado, where extension of the south field four miles to the east looms as result of the showing of the Ogden No. 1 of Col. E. B. Henderson in section 32-18-14.

The well made two heads when opened last week after 500 gallons of acid had been pumped in under pressure and sealed under 900 pounds pressure. It is expected to make a good pumper. Swabbing is now under way at the well. Fifty-five barrels of oil were obtained when the well was swabbed over the week-end.

Casing has been set by the McCreslen Oil Company in the Doty Norman No. 1 in the north half of the northeast quarter of the southeast quarter of section 3-18-13.

The McCreslen Company has moved its rig over to another location on its properties at Urbana, and drilling on its second test started Sunday. This well is the Atkins No. 1 in the west half of the northeast quarter of section 3-18-13.

The Marine Oil Company is drilling below 2,500 feet on the Thompson E-2 in section 10-12-13, the company's latest test in development of its holdings in the Urbana area.

Suit Seeks to Void Oil and Gas Leases Near Hibank.

Special to the Gazette.

El Dorado, June 11.—A suit seeking to cancel oil and gas leases on two tracts near Hibank, where Col. E. Randall Henderson drilled two oil tests, on ground that the defendant did not properly test the lands for oil, was filed in Chancery Court by Blanche Vines Crow today, J. L. Kinard and H. I. Ogden against Colonel Henderson. The suit charges that the leases were executed to C. R. J. Fuller, trustee, and that they were assigned to Henderson. The consideration of the leases was the testing of lands for oil and gas, and the lease provided that in case of abandonment the leases should become void.

The complaint charges that one or more wells were to be drilled to the Macatosh sand and thoroughly tested. The complaint contends that one well was drilled in each tract and that the defendant had abandoned the wells without making a thorough test, and seeks the cancellation of the leases and asks that the defendant be enjoined from interfering with the leases.

Colonel Henderson recently completed an acid test on the Ogden No. 1 on one of the tracts, and the well loomed as a producer. The Vines No. 1 on the other tract made a showing of oil, but neither well would flow.

BIG NEW OIL FIELD BELIEVED LOCATED

Good Sand Encountered in Wildcat Test Northeast of El Dorado.

Special to the Gazette.

El Dorado, June 11.—Hopes for the opening of another large area to oil development in Union county were bolstered when a good sand was encountered in the J. M. Davis wildcat well of Mrs. R. K. Jones in the Calion territory, northeast of El Dorado. A sand showing both oil and gas was cored at around 2,600 feet. Only a three-foot core was taken with the richest oil sand showing up in the bottom of the core.

Discovery of the shallow oil sand surprised the owners as the test was started in the hope of striking deep pay production. The driller is optimistic of the chances of bringing in a well at that depth.

Mrs. Jones said that a drill stem test will be made at once, and if the well shows sufficient oil, casing will be set.

The well is located in the southeast corner of the northwest quarter of the northwest quarter of section 28-16-14. It is in a territory where several other tests have been drilled and good showings of oil obtained.

The wildcat is located between two producing fields—the Smackover field and the Rainbow City area. It is about five miles south and east of the deep test drilled by the Lion Oil Refining Company in section 4-16-15 and about two miles to the northwest of the Rainbow City field.

The Brown well, drilled in section 16-16-14, flowed oil for several years. The exact depth from which this oil came never was definitely determined, but it was believed to have been from below 2,600 feet. The Jones well is one and a half miles southeast of the Stone well which also had a good oil showing.

Test Well South of El Dorado Begun.

Special to the Gazette.

El Dorado, June 20.—Another test outside the producing area is being started south of El Dorado. The well is the test of the Atlas Pipe Line Company on the J. W. Greening tract about five miles from El Dorado. Location is in the southwest corner of the southeast quarter of the southwest quarter of section 30-18-15.

Location has been made by the Marine Oil Company for another test in the Urbana area. This well will be the Union Sawmill Company B-2 in the southwest corner of the southwest quarter of the northwest quarter of section 2-18-13, the second test to be drilled in section which was recently opened for development. Standard rig is being erected by the Marine on the Thompson E-3 in section 10-18-13, recently completed. It is expected to make about the same kind of a pumper as other wells completed in recent months.

Producer Completed in Urbana 6-24-34 Oil Field.

Special to the Gazette.
El Dorado, June 23.—Another producer in the Urbana area was completed by the McCreslen Oil Company when the Atkins No. 2 in section 3-18-13 was brought in as a producer. The well is flowing naturally and is producing more than 100 barrels a day. However, officials of the company said that standard rig is being installed and the well will be made a pumper. It was estimated that the well will make more than 250 barrels a day. The well is located in the southeast quarter of the northeast quarter of the section and is 660 feet north of the Atkins No. 1 which has been a producer for three years. Work is being continued on the Doty Norman No. 1 in the same section. The well was drilled below the sand and is being backed up to the sand for completion. The Alexander-Head Oil Company has announced that rig is being set up for a wildcat test in the southwest quarter of the southwest quarter of section 28-17-13 about two miles northwest of the Atkins well.

Oil Activities Centers on Four South Arkansas Tests.

Special to the Gazette. 6-26-34
El Dorado, June 25.—Four new tests have been started or are ready to start in the wildcat campaign in the south Arkansas oil fields and activity continues in the Urbana area southeast of El Dorado where a "small boom" is anticipated. Last week the McCreslen Oil Company completed its first well on the Wilson and Chapman properties and got a producer believed to be good for 250 barrels a day on the pump at its Adams No. 2 in section 3-18-13. The Marine Oil Company is preparing to pump another well on its properties. The latest wildcat test is to be drilled as the Coleman Brothers No. 1 of Earle F. Fox of Shreveport in the southeast corner of the northwest quarter of the northwest quarter of section 36-16-25 near Lewisville in Lafayette county. Location of the Fox wildcat is south of the great Humble fault which was made after that company drilled 27 core wells. Three fields, the Smackover, Stephens and Irma are located on the south side of the fault. Fox and Foster drilled a well in the area two years ago, cutting the fault at 2,430 feet and encountering the Nacatoch sand. Wilcox drilled a test in 1921 to the south of the Fox and Foster test, and the new well will be about 1,000 feet south of Wilcox test. Another test in the area will be drilled by Benedum and Trees in section 10-16-26 south of Stamps, the location being seven miles northeast of the Fox test and also on the south side of the fault. One new outside test is under way in El Dorado area by the Alexander-Head Oil Company to the northwest of the Urbana field.

Geologist Who Discovered Oil In Union County Returns.

Special to the Gazette. 6-27-34
El Dorado, June 30.—J. J. Victor of Tulsa, Okla., the geologist who worked out the formations that resulted in the discovery of oil in this section, is spending a few weeks in El Dorado, Union county and adjoining territory. Victor's first visit here was made more than 15 years ago when he began his geological work that finally resulted in the development of a field and area that has produced approximately 400,000,000 barrels of crude oil. After his geological reports, the first well drilled in 1920 proved to be the biggest gasser ever developed in Arkansas. It was necessary to kill the well after much damage had been done by the heavy gas pressure, which was about 30,000,000 cubic feet. This well was located about three miles southwest of El Dorado in Section 12-18-16. About six months later, in January, 1921, the first producer was developed on the Armstrong farm in Section 13-17-15, about 1 1/2 miles from the first location. It was drilled by Bruce Hunt and Sam Arendale.

Oil Activities on Increase In South Arkansas.

Special to the Gazette. 9-10-34
El Dorado, July 9.—Oil activity in South Arkansas is scattered over several counties with operations or preparations for drilling started on eight new tests. The latest wildcat in the county is the well being drilled in the Calton area by Mrs. R. K. Jones. The well is located in Section 28-16-14. Another test in Section 22-16-14 is being prepared and derrick timbers are on the ground. The new test is about a mile to the east and slightly north of the Jones test. The Alexander Head Oil Company has set surface casing in its wildcat test 330 feet from the west line and 330 feet from the north line in the southwest quarter of the southwest quarter of Section 28-17-13. Irving et al are making preparations to drill south of Stamps in Lafayette county. Erickson is drilling at a depth of 2,181 feet in a hard rock believed on top of the buck range sand in Section 14-15-23, also near Stamps.

Pure Oil Co. Sells To Lion of El Dorado

El Dorado, Aug. 2.—(Special.)—Announcement was made late Wednesday of the purchase by the Lion Oil Refining Company of El Dorado of the large holdings in Union and Ouachita counties of the Pure Oil Company. The deal was the largest made here recently. The property includes leases on 374 acres in the Smackover field with 28 producing wells, and an average daily production of 390 barrels, and all producing and personal property of the Pure Oil Company.

Union County Oil Fields to Be Shown in Films.

Special to the Gazette. Aug. 7, 1934
El Dorado, Aug. 3.—Seventeen hundred feet of motion picture film were taken in El Dorado and Union county yesterday, as a part of the Arkansas news reel to be displayed at the Century of Progress in Chicago and other places in the United States. Herman V. Bennett, representing the Young Business Men's Association of Little Rock, and B. B. Corson superintended taking of the pictures. The reel started at the J. B. Head wildcat oil test. From there the photographer was taken to a field of pumping wells then to the Lion Oil Company refinery. Included in the reel will be a gusher of the early days and a burning oil well, these features having been purchased from J. W. Duncan, who made them in the boom days. A skyline view of El Dorado was taken from the Exchange building, as well as views in the Smackover oil field.

Work in Urbana Field Captures Oil Interest.

Special to the Gazette.
El Dorado, July 17.—Continued development of the proven area of the Urbana oil field is the center of activity in the south Arkansas fields despite interest in several wildcat tests being drilled in other sections of the area. Information has been received here that a wildcat test is to be drilled in the southern part of Carroll county in the northwestern part of the state and that operations are being continued on the test well being drilled in Lafayette county near Stamps. In the Urbana area casing has been set on one well, three others are under way and preparations are being made for the drilling of another. The Marine Oil Company has reached the producing sand on its Union Sawmill Company B-2 in Section 3-18-13, and preparations are being made to set casing. Location for another test is being made by the same company on the K. D. Parker lease in the same section. The McCreslen Oil Company is working on three wells in the same area. The Hadley A-1 in the southwest corner of the northeast quarter of the southwest quarter of Section 3-18-13 will be placed on the pump this week. Drilling has been resumed on the Union Sawmill Company No. 1 in the southeast corner of the northeast quarter of the northwest quarter of Section 3-18-13 after surface casing was set. Preparations are being made to drill the plug in the cement after plugging back to the sand in the same section. The Alexander Head Oil Company is drilling at 1,522 feet on its wildcat test two miles northwest of the Urbana field in Section 28-17-13. Preparations are being made by the Texas Drilling Corporation to set casing on the Arnold No. 1 in Section 24-15-16. The well is at a depth of 2,030 feet.

Test Oil Wells Occupy Attention of South Arkansas.

Special to the Gazette. Aug. 28, 1934
El Dorado, Aug. 27.—The McCreslen Oil Company has started a new test in the Urbana field. It is the Gus Norman No. 2 in section 3-18-13. The well was spudded in several days ago. A fishing job has developed in the wildcat test of the Alexander Head Oil Company in section 28-17-13, northwest of Urbana. The crew is reported fishing for a core barrel in the Urbana sand. Two new wildcats were reported during the past week. One is the Dudley and Woodward test in section 17-30-7, about a mile northeast of Magnolia. Derrick has been erected on a block of 3,500 acres and a deep test is planned. The other is in Ouachita county, being drilled by T. J. Gaughan and associates in section 18-14-18, southwest of Camden. Derrick also has been erected for this test. In Miller county the Bloomberg Oil Company is drilling below 2,800 feet on a test in section 5-19-23 and the Oil Well Oil Corporation is drilling below 1,500 feet on a well in section 10-19-28. Lawson and Leavell, Tulsa, Okla., operators, have obtained a permit for a well in the southwest of the southwest of section 14-23-3, west, Union parish, La. This location is northwest of the Lillie structure.

LION OIL COMPANY ASSET TO ARKANSAS

Has Oldest and Largest Refinery in Arkansas at El Dorado. Sept. 2, 1934

The Lion Oil Refining Company and its subsidiaries play a big part in the purchasing power of Arkansas, according to figures and facts quoted by Col. T. H. Barton, president of the company. "The Lion plant at El Dorado has the distinction of being the oldest, largest and most modern oil refinery in Arkansas. "During the past year the Lion Oil Refining Company has installed two of the latest type refinery units, replacing old out-of-date equipment. A considerable amount of improvement on other important refinery operating equipment has also been made. It was advisable to modernize the plant facilities in order to manufacture the very best of refined oils and build up an even greater demand for Lion products. "The new construction at the refinery has provided employment for approximately 100 men for the past year, this, of course, is in addition to the regular operating force. Since June, 1933, the number of regular Lion employees has increased 26 per cent and the dollar amount of the pay roll approximately 30 per cent. In June, 1933, there were 693 direct employees receiving salaries and wages at the rate of \$925,000 per year. At the present time Lion has 877 direct employees receiving approximately \$1,200,000 per year. The increase of \$275,000 per year in Lion's pay rolls adds materially to the purchasing power of the state of Arkansas. Most of this amount goes to employees in Arkansas. Others Benefit Indirectly. "In addition to the direct employees, Lion's operations provide employment to many more men and women in an indirect way, such as commission agents and their employees. The wages and salaries of people employed indirectly have increased in about the same proportion as the regular employees. "The Lion Oil Refining Company produces annually from its own properties around 2,200,000 barrels of crude oil and processes at the refinery 2,500,000 barrels of crude. Lion manufactures and sells 12,000 tank cars of refined oils per year. Shipments of refined oils are made over a large area in the Central United States from the Gulf to the Great Lakes. "Approximately 26 per cent of our total refinery gasoline production is retailed through the following subsidiary companies: Lion Oil Sales Company of El Dorado, Ark.; Independent Oil Company of Tupelo, Miss., and Superior Oil Company of Gulfport, Miss. These companies own or control 500 outlets in Arkansas, Alabama, Louisiana, Mississippi and Tennessee. Since the first of the year, Lion Knix Knox gasoline sales have been about 25 per cent greater than they were over the same period last year. In addition to increased sale of petroleum products through the retail outlets, tire sales are much greater than in previous years; this is largely due to distributing Kelly-Springfield tires, a nationally known and advertised product.

"From these facts, it is easy to see that the Lion organization is a major factor in keeping business turning in our community and increasing the purchasing power and prosperity of its population, for practically all the cash received from operations is in turn spent locally on labor, materials and property. Not only the management, but all of the Lion employees have a keen interest in promoting the welfare of their respective localities."

New Deep Test Well to Be Drilled at Rainbow Field.

Special to the Gazette. Oct. 27, 1934
El Dorado, Oct. 26.—Plans for another 5,000-foot deep oil test in the Rainbow City field northeast of El Dorado, are announced. The new well, to be drilled by the Jovian Oil Corporation, will be located within the northwest quarter of the southeast quarter of section 3-17-14. The location is a mile due north of the Short and Hayes well, now drilling in section 10-17-14. The Jovian Oil Corporation, a new Arkansas oil firm, is headed by Gordon Ingalls, well known south Arkansas and East Texas oil operator.

New Deep Test Well to Be Drilled at Rainbow Field.

Special to the Gazette.
El Dorado, Oct. 26.—Plans for another 5,000-foot deep oil test in the Rainbow City field northeast of El Dorado, are announced. The new well, to be drilled by the Jovian Oil Corporation, will be located within the northwest quarter of the southeast quarter of section 3-17-14. The location is a mile due north of the Short and Hayes well, now drilling in section 10-17-14. The Jovian Oil Corporation, a new Arkansas oil firm, is headed by Gordon Ingalls, well known south Arkansas and East Texas oil operator.

New Deep Test Well to Be Drilled at Rainbow Field.

Special to the Gazette.
El Dorado, Oct. 26.—Plans for another 5,000-foot deep oil test in the Rainbow City field northeast of El Dorado, are announced. The new well, to be drilled by the Jovian Oil Corporation, will be located within the northwest quarter of the southeast quarter of section 3-17-14. The location is a mile due north of the Short and Hayes well, now drilling in section 10-17-14. The Jovian Oil Corporation, a new Arkansas oil firm, is headed by Gordon Ingalls, well known south Arkansas and East Texas oil operator.

Casing Being Set on Latest Producer in Rainbow Field.

Special to the Gazette. Nov. 5, 1934
El Dorado, Nov. 4.—Three shifts were busy yesterday setting the casing at Short and Hays Taylor No. 1 in 10-17-14, estimated to be producing from 3,000 to 8,000, and even as high as 15,000 barrels daily. The oil is of high gravity. Hundreds of persons visited the well, eight miles east of El Dorado in the Rainbow field, during the day, and saw oil shoot over the derrick. The casing job is scheduled for completion tomorrow, and in another seven days, production should be determined. The well is said to be a discovery in the deepest producing sand ever found in the Rainbow field, and more activity is expected to start the first of the week, with one new project already in the making.

OIL FIELD PLACED UNDER REGULATIONS

Rainbow City Considered a New Pool by Board of Conservation.

Special to the Gazette.
El Dorado, Nov. 7.—Rules for orderly development of the Rainbow City field as the result of the discovery of a new deep sand in that territory, were adopted by the Arkansas Board of Conservation at a meeting here today. Two rules relative to the proper spacing of wells and the deepening of old wells from the Gregory sand to the new level were adopted. The board adopted a resolution that said that the new sand constitutes the discovery of a new pool and that Section 7 of the petroleum code requires the development of new oil or gas pools in an orderly and conservative manner.

Rule No. 34, applying to the drilling of new wells, says that no well hereafter drilled shall be drilled nearer than 660 feet to any completed or drilling well on the same, or adjacent to, land or farms, and that no well shall be drilled nearer than 330 feet to any property line. The same rule applies to wells to be deepened.

Rule No. 35 provides that if a well is deepened to the new sand at 3,360 feet, and producing sand is encountered, a full string of casing from top to bottom must be set and cemented under the supervision of the Arkansas Board of Conservation.

Judge J. S. Brooks, chairman, presided at the meeting. All members of the board were in attendance. Joe K. Mahoney, district allocator of the National Petroleum Administration, urged adoption of rules for orderly development.

Oil Company Restrained From Deepening Well.

Special to the Gazette. Nov. 10, 1934
El Dorado, Nov. 9.—A temporary restraining order to prevent H. L. Hunt, El Dorado and East Texas operator, from deepening a well in the Rainbow City field was granted this afternoon by Chancellor Walker Smith on complaint filed by the Arkansas Board of Conservation.

C. E. Harris, conservation agent, testified that the Hunt company had started deepening its Gregory No. 3 well in the southwest quarter of the southeast quarter of section 10-17-14 and had the well at a depth of 3,270 feet. The well previously had been drilled to the Gregory sand at 3,200 feet and was being deepened to the new sand discovered by Short and Hayes on their Taylor No. 1 well which is to be drilled in soon.

Harris testified that the well is less than 330 feet from the property line of the 40-acre tract. The rule as passed by Conservation Board provides that no well may be drilled or deepened that is less than 660 feet from another well or less than 330 feet from a property line. Casing has been set on the Taylor well at 3,326 feet just above the new sand that was encountered at 3,360 feet and is expected to be drilled in a few days.

New Deep Well Is Stimulus To Operators

Throng Sees Gusher Cleared and Flowing, as in Boom Days.

Special to the Gazette. Nov. 10, 1934
El Dorado, Nov. 10.—(Special.)—The deep-sand well in the Rainbow City field, northeast of El Dorado, was showing up for a big-type producer tonight with completion of testing scheduled for Sunday morning. The well is the Taylor No. 1 of Short & Hayes, in the northwest quarter of the southeast quarter of Section 10-17-14. Flowing for a time late today after nearly a full day of testing, the well is said to have given indications of 5,000 barrels daily. While it was flowing, the well had not completely cleared itself. Estimates on the rate of the production ranged from 1,200 to 5,000 barrels, with nearly all oil men who saw the well in action agreeing that it will make a big producer. The well flowed through tubing and was shut in after being allowed to flow only about 30 minutes. There is still a large amount of water in the casing outside of the tubing and the removal of this water is scheduled in operations to be resumed Sunday. Efforts were made to wash the well in during the day as wells are completed in the East Texas field, but the pressure of the mud and water apparently was too great and the well did not develop enough gas pressure to clean itself. Water was pumped into the well for several hours during the day and later gas was pumped into the hole. It was by the latter process that the well cleared itself through the tubing and started flowing. While it was flowing the well shot a stream of oil and drill water across a slush pit. Nearly 1,000 persons were at the well during most of the day, but only a few were on hand to see the well perform just as darkness started to settle over the area. The crowd was the largest turnout to witness testing of a well since the early boom days in the El Dorado territory. Production is from a new sand in the Rainbow City area, at 3,360 feet, about 150 feet deeper than the Gregory sand from which other wells in that area are producing. When a drill stem test was made a week ago, the well loomed as being good for from 3,000 to 8,000 barrels, and many who saw the well perform today were still as optimistic in their hopes. It was the consensus of opinion that a big well was indicated.

Much new activity is expected to follow completion of the well. One new test already has been started, others are planned and deepening of a number of old wells in the area is contemplated.

A new test which is actually under way is the well of the Jovian Oil Corporation, in Section 3-17-14, a mile due north of the Short & Hayes Taylor well.

Taylor No. 1 Well Test Set For Today.

El Dorado, Ark., Nov. 10.—(P)—A flow of oil at the Taylor No. 1 well of Short & Haynes, in Section 10-17-14, after a day of testing, stimulated interest in a final test of the well scheduled for tomorrow morning. Production is reported to be from a sand at 3,360 feet, which is about 150 feet deeper than other producing formations in the Rainbow City field.

TAYLOR WELL GOOD FOR 1,250 BARRELS

Rainbow City Deep Sand Test Brought in as 'Perfect Completion.'

El Dorado, Nov. 11.—The Rainbow City field deep sand well, Taylor No. 1 of Short & Haynes, in Section 10-17-14, was completed today as a big flowing producer. The well is flowing at the rate of 1,250 barrels a day through a one-inch choke.

Showing no traces of salt water, the oil practically is pipeline oil, the content of the flow other than oil being less than six-tenths of one per cent.

Brought in as what was termed a "perfect completion" by means of the washing-in process and the pumping of gas into the hole as used in the East Texas field, the well last night was flowing into two 1,000-barrel tanks from which the oil will be turned into a pipeline, connections already having been made.

Another large crowd was on hand for the completion of the well today, rivaling the turnout of more than 1,000 persons at the testing operations yesterday. Many of the visitors were veteran oil men, scouts and others in the industry.

"The well is flowing easy after a perfect completion and we are satisfied," G. D. Hayes, member of the firm of Short & Hayes, said tonight.

The oil is slightly above 28 gravity. The oil is coming from a new sand for the Rainbow City field at 3,360 feet. This formation is about 150 feet deeper than the Gregory sand from which other wells in that field are producing.

Deepening of Two Rainbow City Wells Authorized.

El Dorado, Nov. 12.—With the Taylor No. 1 well of Short & Haynes in the Rainbow City field completed for a producer making more than 1,000 barrels of pipe line oil a day through a one-inch choke, two permits for the deepening of old wells in the field were granted by the Arkansas Board of Conservation this afternoon. Permits were given to the Alice Sidney Oil Company, J. S. Rushing, trustee, for its Gregory No. 7 well in the west half of the northwest quarter of section 11-17-14, only 400 feet north of the discovery well in the Rainbow City field and a half mile east of the Short & Hayes well. The H. L. Hunt Company, in the southwest quarter of the southeast quarter of section 10-17-14, a half mile south of the Taylor well, received the other permit.

The permit to Dr. Rushing was granted because he had operations under way before the ruling of the board was made prohibiting the drilling or deepening of wells less than 660 feet from another well and 330 feet from a property line. Rushing agreed to deepen only one well on a 10-acre tract.

The Short & Hayes well today was flowing at the rate of about 45 barrels an hour. The well pressure has been increasing since it was opened yesterday morning with a rock pressure of about 400 pounds. The owners have decided to allow the well to continue to flow through the choke.

El Dorado Reports Big New Gusher

El Dorado, Nov. 20.—(Special.)—A new gusher, reports making 2,000 barrels, came in at 1:55 this afternoon in the Rainbow City field, 10 miles east of here.

It is the Gregory No. 7 of the Alice Sidney Oil Company, section 11-17-14, one half mile from the Taylor well that came in two weeks ago, making an estimated 1,000 barrels.

PRODUCTION OF OLD WELL INCREASED

Gregory No. 7 in Rainbow City Deepened; Makes Good Showing.

El Dorado, Nov. 20.—A second producer in the Rainbow City field deep sand seemed assured this afternoon after a successful drill stem test on the Gregory No. 7 of the Alice Sidney Oil Company, in the west half of the northwest quarter of the southwest quarter of section 11-17-14, showing good gas pressure and shooting oil high into the derrick. The well was estimated to be good for from 1,500 to 2,000 barrels daily.

The well is a half-mile east of the Taylor No. 1 of the S. H. A. Oil Company, discovery well in the new sand, and extends the field to the east. The Taylor well is located in the northwest quarter of the southeast quarter of section 10-17-14.

Dr. J. S. Rushing, president of the Alice Sidney Company, estimated that the well would be good for 2,000 barrels daily when completed. The well was making good oil with no trace of water. It was allowed to flow only a short time.

The sand was hit at almost the same depth in the discovery well. The bottom of the hole in Dr. Rushing's well is 3,358 feet and the top of the sand at 3,351. In the Taylor well the sand was struck at 3,360 with six feet of the formation.

The Gregory No. 7 well was an old producer from the Gregory sand at 3,200 feet. Deepening of the well started after the Taylor No. 1 well was completed for a 1,200-barrel producer. Production from the Taylor well now is around 800 barrels daily. Casing will be set in the well tomorrow morning and it is expected to be completed in about five days. The well will be completed as soon as possible.

Other Wells Being Deepened.

Deepening operations on the H. L. Hunt well in the southwest quarter of the southwest quarter of the southeast quarter of section 10-17-14 are being rushed. Trouble with a liner has temporarily delayed work.

The S. H. A. Company, owners of the discovery well, has moved the derrick to the location of an offset to the Taylor No. 1, east of the discovery well in between the two producers in the deep sand. The offset is in the east half of the northwest quarter of the southeast quarter of section 10-17-14.

The Bellevue Corporation has made location for a test northeast of the Taylor well about a quarter-mile. The test will be in the east half of the northwest quarter of the southeast quarter of the southeast quarter of section 10-17-14.

The Ruston Drilling Company is building derrick for a test northwest of the Taylor well in the east half of the northeast quarter of the northwest quarter of section 10-17-14.

Murdock et al. is reported making location for an offset to the Rushing well several hundred feet west of the Rushing well. The Murdock lease is in the northeast quarter of the southeast quarter of section 10-17-14.

The Jovian Oil Company is drilling at about 1,200 feet on its Purdue No. 1 in the northwest quarter of the southeast quarter of section 3-17-14 about a mile north of the Taylor well.

Rainbow City Having Boom

Second Deep Sand Gusher, in Tuesday, Speeds Drilling Operations.

El Dorado, Nov. 21.—(Special.)—Deepening of an old well, the Gregory No. 7 of the Alice Sidney Oil Company, apparently has resulted in another producer in the Rainbow City field deep sand, a test yesterday afternoon showing good gas pressure and oil shooting high into the derrick. The well was estimated to be good for from 1,500 to 2,000 barrels daily.

The Gregory No. 7 is a half-mile east of the discovery well in the new sand—the Taylor No. 1 of the S. H. A. Oil Company. The Gregory No. 7 extends the new field to the east. The bottom of the hole in the new well is 3,359 feet. Sand was struck at 3,351 feet, approximately the same level at which sand was reached by drillers of the Taylor well.

Casing will be set around the Gregory well at once, and the well will be completed soon. Dr. J. S. Rushing is president of Alice Sidney Company.

The Taylor No. 1 well, the discovery well, came in as a daily producer of 1,200 barrels. Its production now approximates 800 barrels daily. A half-dozen other wells are being deepened or drilled in the new field.

Casing to Be Set in Gregory No. 7 Well Soon.

El Dorado, Nov. 21.—Preparations were being made today for setting casing on the Gregory No. 7 well of the Alice Sidney Oil Company in Section 11-17-14 following a successful drill stem test yesterday which indicated a producer of 1,500 to 2,000 barrels.

Reports from the Rainbow City field were that the H. L. Hunt well in Section 10-17-14 is resuming deepening operations after liner trouble had been straightened out. Work on the well had been delayed with a string of liner being caught in the hole but it has been removed and the well is being deepened.

The Hunt well is reported to be at a depth of about 50 or 60 feet above the deep sand with expectations of the sand being reached in the next day or two. The Hunt well, like the Gregory well, was a producer in the Gregory sand at 3,200 feet and was deepened by special permit from the Conservation Department.

The Hunt well is located in the southwest corner of the southwest quarter of the southeast quarter of Section 10-17-14, about half a mile south of the Taylor No. 1 well of the S. H. A. Corporation, discovery well in the new sand.

Drilling Boom Under Way in Deep Sand Area.

El Dorado, Nov. 23.—A drilling boom is getting under way in the new deep sand in the Rainbow City field 10 miles east of El Dorado, as a result of the discovery well being completed for a good producer flowing at the rate of about 800 barrels of pipe line oil daily and a successful drill stem test on another well half a mile east of the discovery well.

Another well being deepened to the new sand and locations have been made for four additional wells. A deep test is being drilled about a mile north of the discovery well. Owners of wells producing in the Gregory sand at 3,200 feet plan to deepen the holes to the new sand at about 3,360 feet.

Reports also have been heard that acreage is being blocked for 10 or 12 wildcat tests in various sections of Union county.

ANOTHER PRODUCER IN RAINBOW FIELD

Gregory No. 1 Brought in With Flow Estimated at 2,000 Barrels.

El Dorado, Nov. 26.—The second producer in the new deep sand of the Rainbow field was completed this afternoon when the Alice Sidney Oil Company brought in its Gregory No. 1 for a 2,000-barrel producer.

The well was brought in after being "washed in" with oil for about an hour. After the oil was pumped into the hole, the pumps were kept running about 45 minutes and then were shut off. After about 15 minutes, the well began flowing. The well was allowed to flow into the pits until it cleaned itself of the oil used in the process and was turned into tanks.

Free From Salt Water.

The oil was free from salt water, and is said to be good pipe line oil. Oil men estimated the production at 2,000 barrels a day, and it later was gauged at 80 barrels an hour.

The Alice Sidney well is located in the west half of the northwest quarter of the southwest quarter of section 11-17-14, about half a mile west of the Taylor No. 1 of the S. H. A. Oil Company in the northwest quarter of the southeast quarter of section 10-17-14, the discovery well in the new sand. The S. H. A. well is flowing 750 to 800 barrels a day.

The Gregory well is an old producer in the Gregory sand at 3,200 feet and was deepened by special permit from the Conservation Department. The new well is 400 feet north of the Gregory No. 1 of the Alice Sidney Company.

The Alice Sidney well was completed at a depth of 3,358 feet, practically the same depth as the Taylor well. Formations in both wells checked all the way down.

The Alice Sidney Company is erecting a derrick for another test in the same 20-acre tract as the Gregory No. 7, and drilling is expected to begin soon.

A derrick has been completed for another offset to the new producer. It will be the well of C. E. Murdock, and is located in the northwest quarter of the southeast quarter of section 10-17-14.

Probably the next well to reach the new sand will be the Purdue No. 1 of the Jovian Oil Company in section 3-17-14, north of the discovery well. The well is below the 2,300-foot level.

Another well below 1,000 feet is the Taylor No. 2 of the S. H. A. Company, an offset to the discovery well in 11-17-14, east of the discovery well.

Second Deep

Well Test Is Due Tomorrow

El Dorado Again Has Oil Boom With Lease Trading Active.

El Dorado, Nov. 24.—With the second well ready for testing Monday, several others drilling ahead, and many new tests being started, much activity is under way in the development of the new deep sand in the Rainbow City field, northeast of El Dorado.

The well to be tested is the Gregory No. 7 of the Alice Sidney Oil Company in section 11-17-14.

Reports from the field tonight stated that the well would be drilled in Monday. Tubing was being run into the hole last night. It was understood that the same process of washing as was used in the discovery well would be employed in the testing of the Alice Sidney well.

The Alice Sidney is expected to make another good producer, probably better than the discovery well, Taylor No. 1 of Short and Hayes, in section 10-17-14. An excellent showing was made by the well in a drill stem test recently. Estimates of the probable production at that were from 1,500 to 2,000 barrels.

Much trading has been in progress during the past week, involving acreage both close to the producing well and in outlying sections, with several big deals reported on the verge of being closed. The week has brought the arrival of more oil men it has been a busy period on street corners, in hotel lobbies and elsewhere.

New derricks are going up around the first well and the Alice Sidney location, and in addition locations are said to be in the making some distance from deep sand production. Many leases are believed to have changed hands during the past week.

Probably the next well to reach the sand will be the Purdue No. 1 of the Jovian Oil Corporation in section 3-17-14, the well that is expected to prove up territory to the north of the discovery well. Drilling was reported in progress tonight below 2,300 feet.

Rainbow City Having Boom

Second Deep Sand Gusher, in Tuesday, Speeds Drilling Operations.

El Dorado, Nov. 21.—(Special.)—Deepening of an old well, the Gregory No. 7 of the Alice Sidney Oil Company, apparently has resulted in another producer in the Rainbow City field deep sand, a test yesterday afternoon showing good gas pressure and oil shooting high into the derrick. The well was estimated to be good for from 1,500 to 2,000 barrels daily.

The Gregory No. 7 is a half-mile east of the discovery well in the new sand—the Taylor No. 1 of the S. H. A. Oil Company. The Gregory No. 7 extends the new field to the east. The bottom of the hole in the new well is 3,359 feet. Sand was struck at 3,351 feet, approximately the same level at which sand was reached by drillers of the Taylor well.

Casing will be set around the Gregory well at once, and the well will be completed soon. Dr. J. S. Rushing is president of Alice Sidney Company.

The Taylor No. 1 well, the discovery well, came in as a daily producer of 1,200 barrels. Its production now approximates 800 barrels daily. A half-dozen other wells are being deepened or drilled in the new field.

Rainbow City

Again Swarms With Drillers

Derricks Spring Up and El Dorado Galvanized by New Boom.

El Dorado, Dec. 1.—(Special.)—Activity is now under way on a big scale in the development of the new deep oil sand area in the Rainbow City field.

New derricks have been going up here and there in the field during the past week, until now there are more than a dozen actual operations in progress or being started.

Some of the new wells are being drilled by firms and individuals already operating in the area, but other companies are joining and still more new tests probably will be started within the next week. One of the most active drilling campaigns in Arkansas in recent years is believed in the offing.

While most of the new activity is centered around the two producing wells that have been completed, at least one of the new tests is more to the south, and there are other proposed operations that will widen the field. The field has been extended to the east and a well to the north is in the final stages.

With two of the wells now nearing the sand, it is likely that drill stem tests will be made during the week-end or at least the first part of the week. The well nearest the pay, at 3,360 feet, is the Jovian Oil Corporation's Purdue No. 1, in Section 3-17-14, about a mile to the north of the discovery well. Saturday the crew was reported drilling below 3,200 feet, and will probably core for the Gregory sand.

Second to the Jovian well is the Taylor No. 2 of the S. H. A. Oil Company, in Section 10-17-10, an offset to the east of the discovery well, also on the Taylor sand. Saturday drilling was under way on this well at 3,134 feet.

Moving development to the south, the Lion Oil Refining Company is getting ready for the J. M. Gregory No. 1 test in the northeast quarter of the northeast quarter of Section 15-17-14. Derrick has been erected and Saturday a drilling rig was being moved to the location. The Lion also

is starting one other test, E. F. Gregory B-1, in the northeast quarter of Section 10-17-14.

Practically all of the other tests are in the vicinity of the two producers, Taylor No. 1 of the S. H. A. Company and the Gregory No. 7 of the Alice Sidney Oil Company. The S. H. A. and Marine Oil Company are rigging up for the Townsend No. 1, in Section 10-17-14, and the Alice Sidney was ready to set surface casing Saturday night in Gregory No. 8, in 11-17-14, an offset of the producer to the north.

C. E. Murdock has started one test and is getting ready for another on his properties in Section 10-17-14.

Surface casing has been set in the Gregory No. 7, an offset to the west of the Alice Sidney well, and he has derrick up and is moving in a rig for the Gregory No. 8 in the northwest corner of the same tract which will be an offset to the S. H. A. Taylor No. 2.

On a southwest offset to the Alice Sidney producer, H. L. Hunt has spudded in on his Gregory well, in section 10-17-14. He also has a derrick up for a direct offset to the south in the same section.

The Skelly Oil Company has started on the Purdue No. 1, in Section 10-17-14, which is a west offset to S. H. A. and Marine Oil Company Purdue well. The Ruston Drilling Company is ready to begin work on the Purdue No. 1 in the northeast quarter of the northwest quarter of Section 10-17-14.

The Bellevue Corporation is moving materials for a well on the J. M. Gregory lease in Section 10-17-14. This will be a direct offset to the S. H. A. Taylor No. 2. Saturday the crew in charge of the Gregory No. 7, producer of the Alice Sidney Company, was attempting to improve production in the well. Apparently still partially choked, the well has decreased its production again after coming back good one time. The discovery well is still making better than 700 barrels daily.

MUCH ACTIVITY IN RAINBOW CITY AREA

More Than Dozen Wells Either Being Drilled or Soon to Be Started.

Special to the Gazette.
El Dorado, Dec. 1.—With more than a dozen wells either being drilled or soon to be drilled, there is more activity in the Rainbow City field east of El Dorado than since the "boom days."

In addition to two wells near the sand, four more are being drilled, and locations have been made for seven and derricks have been erected on most of the locations.

All of the new tests are in the vicinity of the discovery well of the S. H. A. Oil Corporation with the exception of two, one of which is nearing the vicinity of the new sand and the other is half a mile south of the discovery well.

Perdue No. 1 Near Sand.

The Perdue No. 1 well of the Jovian Oil Corporation in section 3-17-14, about a mile north of the discovery well is at a depth of 3,200 feet, about 150 feet above the sand at 3,360 feet. The well is at the depth of the Gregory sand at 3,200 feet and is expected to be cored in that sand.

The Taylor No. 2 well of the S. H. A. Corporation in section 10-17-14, in offset east of the discovery well on the same farm, is drilling at 3,140 feet.

Derrick has been erected by the Lion Oil Refining Company on a test to be drilled about half a mile south of the discovery well in the northeast quarter of the northeast quarter of section 15-17-14 to be known as the J. M. Gregory No. 1. Rig is being moved to the location and drilling is expected to get under way soon. Another test, the E. F. Gregory No. B-1, will be drilled by the Lion in the southeast quarter of the northeast quarter of section 10-17-14.

Most of the other tests in the field are discovery Taylor No. 1 of S. H. A. Company in section 10-17-14 and the Gregory No. 7 of the Alice Sidney Company in section 11-17-14.

The S. H. A. Company, with the Marine Oil Company, operators in the Urbana field, are preparing for a joint test, the Townsend No. 1 in section 10-17-14 and the Alice Sidney Company is setting surface casing in its Gregory No. 9 north offset to its producer in section 11-17-14.

C. E. Murdock has set surface casing on his offset well, the Gregory No. 7, west of the Alice Sidney well, in section 10-17-14, and has erected derrick and is moving rig for the Gregory No. 8 in the same tract which is an offset to the S. H. A. Taylor No. 2.

H. L. Hunt has spudded in his offset to the southwest of the Alice Sidney producer in section 10-17-14. He also has derrick up for a direct offset to the south in the same section.

The Bellevue Corporation is preparing for a test on the J. M. Gregory land in section 10-17-14, a direct offset to the S. H. A. Taylor No. 2.

The Skelly Oil Company has started operations on its Perdue No. 1, in section 10-17-14, a west offset to the S. H. A. Marine Perdue test.

The Ruston Drilling Company is ready to start work on its Perdue No. 1, in the southeast quarter of the northeast quarter of the northwest quarter of section 10-17-14.

Drill Stem Test on Perdue No. 1 Near El Dorado Delayed.

Special to the Gazette.
El Dorado, Dec. 4.—Drill stem test on the Perdue No. 1 well of the Jovian Oil Corporation in Section 3-17-14 was delayed today when the testing tool became lodged in the hole. The testing tool was being lowered and became caught before reaching the sand because of the narrowness of the hole.

The tool was removed and the hole may be reamed out for another test. The well is at a depth of 3,274 feet, in the Gregory sand at which level many producers have been obtained in the Rainbow field. The Jovian well is a mile north of the discovery well of the S. H. A. Oil Corporation.

The Gregory No. 7 well of the Alice Sidney Oil Company in the northwest quarter of the southwest quarter of Section 11-17-14, the second producer in the new sand, was swabbed out this morning and flowed 68 barrels of oil in 45 minutes. When brought in the well flowed at the rate of 1,500 to 2,000 barrels a day but since has bridged itself and production was reduced.

Cores are being taken in the Taylor No. 2 of the S. H. A. Company offset to the east of the discovery Taylor No. 1 in the northwest quarter of the southeast quarter of Section 10-17-14. The well is at a depth of 3,384 feet.

Good progress has been made on two of the many new tests started in the vicinity of the first producer. The Ruston Drilling Company is drilling around 2,300 feet on its well in section 10-17-14, and the Skelly Oil Company is around 900 feet on its well in the same section.

The Marine Oil Company and the S. H. A. Company spudded in on the Townsend No. 1, a joint operation, in Section 10-17-14 today.

Another new test will be the Adams No. 1, a joint operation of G. E. Brosie, Inc., and Short and Hayes in the west quarter of the northwest of Section 11-17-14. Derrick is being erected and materials moved in. This well is north of the Alice Sidney producer in the same section. Directly south of the Taylor discovery well H. L. Hunt is preparing to drill a test in the northwest corner of the southwest of the southeast of Section 10-17-14.

Four Wells in Rainbow City Now Coring

Davis No. 1 Wildcat of Mrs. R. K. Jones Also Near Sand.

El Dorado, Dec. 8.—While coring operations are in progress, or will be Sunday, in four wells in the Rainbow City field, a wildcat test which is creating much interest also is nearing the sand.

The wildcat is the Davis No. 1 well of Mrs. R. K. Jones, in section 28-16-14, in what has been termed the "Callion territory." Another case of trouble on the well has been overcome and developments are likely within the next few days.

Mrs. Jones reported tonight that the drill stem, which had been stuck in the hole, is clear again, and that the well is only 60 feet off the sand which was encountered several months ago. The well is reported now as being in excellent condition, and the crew will be ready for taking of cores Monday in search of the formation slightly below 2,700 feet.

After drill stem tests Saturday, coring is planned Sunday on two Rainbow City deep sand wells, the Taylor No. 2 of the S. H. A. Oil Corporation, in section 10-17-14, and the Perdue No. 1 of the Ruston Drilling Company, in the same section.

Saturday the crew on the Perdue No. 1 well of the Jovian Oil Corporation, in section 3-17-14, was reaming down, and taking of cores was scheduled to have been resumed Saturday night. The well is down to 3,440 feet.

H. L. Hunt was coring Saturday at around 3,248 feet on his Gregory No. 11, in section 10-17-14, and probably will continue with similar operations Sunday.

The Marine S. H. A. Townsend No. 1, in section 10-17-14, is drilling around 1,500 feet, and the Gregory No. 8 of the Alice Sidney Oil Company, in section 11-17-14, is near the 2,000-foot level.

New Oil Sand Found in Taylor Well Near El Dorado.

El Dorado, Ark., Dec. 9.—(AP)—Attaining a depth of 3,466 feet, a still deeper oil sand was encountered today in the Taylor No. 2 well. The new formation was hit 100 feet below the Taylor said. Casing will be set at once for final testing. Two drill stem tests were made today with good showings of oil with some water along with the crude. The well was estimated to be making 20 per cent water but it was believed this flow could be shut off. A good core was taken from the Gregory No. 2 well today. A drill stem test will be made tomorrow.

ANOTHER PRODUCER AT RAINBOW CITY

Gregory No. 11 Well Estimated Good for 25 Barrels an Hour.

Special to the Gazette.
El Dorado, Dec. 10.—Another good producer, the second in two days, was indicated in the sand area in the Rainbow City field today.

Today's indicated producer came in the Gregory No. 11 well of H. L. Hunt in section 10-17-14, just south and slightly to the east of the producing well at the Alice Sidney Oil Co., in section 11-17-14.

An excellent showing was obtained in a drill stem test on the well this morning. The well was said to have shown 600 feet of oil in a 10-minute test. It had not been determined whether casing would be set at once. A member of the drilling crew said that more cores would be taken.

The oil sand in the Hunt well was found at a different depth than in other producers in that area. The sand was encountered at 3,297 feet, the other sand having been lower. It is estimated that the well would be good for 25 barrels an hour or better.

Still Deeper Sand Struck.

Today's indicated producer followed hitting of a still deeper sand by the S. H. A. Oil Corporation in the Taylor No. 2, in section 10-17-14. Two drill stem tests were made on the well yesterday and good showings of oil, with some water, were obtained. Casing was being set in the well today for a final test of the sand encountered at 3,466 feet.

The showing of the Taylor No. 2 has resulted in renewed activity in the immediate vicinity.

The Lion Oil Refining Company has resumed operations on the Gregory B lease in section 10-17-14, east of the Taylor No. 2, and the Bellevue Corporation has rigged up and will start drilling probably tomorrow on its well, an offset to the north of the Taylor location.

H. L. Hunt was coring on another well today. It also is on the Gregory farm, in section 10-17-14, an old well that is being deepened from the Gregory sand around 3,200 feet. Cores were being taken today at 3,340 feet.

Both of the Hunt wells are to the south of present deep sand production, and if the Gregory No. 11 is completed as a producer, it will extend the field about a quarter of a mile to the south.

Another Deep Sand Producer In Rainbow City Field.

El Dorado, Ark., Dec. 15.—(AP)—The third deep sand producer in the Rainbow City field was recorded today when the Gregory No. 11 of H. L. Hunt, in Section 10-17-14, was completed for an oil producer. The well gauged 60 barrels an hour during a three-hour test.

The oil was described as 29 gravity and free from water. Production was obtained at a depth of 3,319 feet, a different level from other producing wells in the Rainbow City area.

Two tests, one by the S. H. A. Company on its Taylor No. 2, and the other at the Gregory No. 3 of H. L. Hunt, are expected to be completed soon. The Taylor No. 2 is located in Section 10-17-14, and the Gregory No. 3 in Section 10-17-14.

RAINBOW CITY AREA HAS ANOTHER WELL

Perdue No. 6 of Skelly Oil Company Comes in as 1,500-Barrel Producer.

Special to the Gazette.
El Dorado, Dec. 17.—Another good producing well, the third deep sand test to be completed in the past three days, was brought in this morning in the Rainbow City field. The well is the Perdue No. 6 of the Skelly Oil Company, in Section 10-17-14. Swabbed in this morning, the well is estimated to be good for 1,500 barrels a day. The well was said to be flowing at the rate of 70 to 75 barrels an hour.

Showing good gas pressure, the well started flowing after swabbing had been in progress a short time. Completion of the well is from a depth about the same as in the Taylor No. 1, or discovery well in that area.

The Skelly producer is to the northwest of the first well.

Testing of another well had been started for today, but this afternoon

Measures Adopted by State Program Embodying Four

RAINBOW CITY HAS ANOTHER PRODUCER

H. L. Hunt Brings In His Gregory No. 13 as 1,500-Barrel Well.

Special to the Gazette.
El Dorado, Dec. 26.—One well in the Rainbow City deep sand area was completed for a 1,500-barrel producer today and a drill stem test on another indicated a large producer, while in the Callion area casing has been set on the wildcat being drilled by Mrs. R. K. Jones and a drill stem test will be made soon on the offset test to the Bragg producer of Camden, in Ouachita county.

The Gregory No. 13 of H. L. Hunt, in Section 11-17-14, was completed for a 1,500-barrel producer. The well is an offset to the No. 11 well which is the largest producer in the new deep sand. Drill stem tests on the Gregory well of J. N. Crosbie, in Section 10-17-14, this afternoon, indicated a producer for 1,000 barrels daily. Casing will be set at once.

Davis No. 1 Casing Set.

Mrs. Jones set casing on her Davis No. 1 wildcat in Section 28-16-14 in the Callion area at 2,746 feet after a successful drill stem test was made at 2,755 feet. Drill stem test on T. J. Gaughan's Rath & Cartier No. 1, offset to the Bragg No. 1, in Ouachita county, west of Camden, will be made this week. The sand in the offset was encountered at 1,390 feet, a few feet deeper than in the discovery well. No gauge has been made of production on the discovery well as it has not been pumped continuously. Production has been estimated at 1,000 barrels daily.

NEW DEEP WELL IN RAINBOW CITY FIELD

Gregory A-1 Good for About 700 Barrels Daily on First Test.

Special to the Gazette.
El Dorado, Jan. 3.—Another producing well that extended the deep sand producing area was completed today in the Rainbow City field. The new well is the Gregory A-1 of the Lion Oil Refining Company in section 11-17-14. With the well not entirely cleaned this afternoon, the producer was established to be good for about 700 barrels

New Deep Sand Producer In Rainbow City Field.

Special to the Gazette.
El Dorado, Jan. 7.—One new deep sand producer was added today and two possible extensions of the deep sand area loom in the Rainbow City field.

The ninth producer to be completed in recent weeks was the Gregory No. 12 of H. L. Hunt, Inc., in section 10-17-14. The well is reported good for about 600 barrels daily. It is flowing at the rate of 25 barrels an hour.

The biggest extension of the area today was indicated when the Ohio struck a good sand slightly below 3,300 feet in the Oliver No. 1, in section 7-17-14, about two miles east of the present production.

The well is in the northwest of the southwest of the southwest of the section. Following the coring of what appeared to be an excellent sand, casing was set at once without a drill stem test. This is an old well that has been deepened.

The other indicated extension is to the south where J. E. Crosbie and Short & Hayes are reported to have hit a deep sand that appeared to be about the best yet encountered in the field. The formation was said to have been struck at 3,503 feet in the W. E. Gregory Estate No. 1 in section 15-17-14. Several other wells are coring.

New 750-Barrel Well Brought In In Rainbow Field.

Special to the Gazette.
El Dorado, Jan. 11.—Another good producer was added to the Rainbow deep sand today when the S. H. A. Oil Corporation completed its No. 3 well in the northeast corner of the southwest of section 10-17-14, flowing an estimated production of more than 750 barrels daily. The well is a west offset to the deep sand discovery well and extends the field in that direction. It is located on the large block originally leased by Short & Hayes, and is expected to lead to the drilling of other wells to the west.

Deep Test for Werner Land In Union County Planned.

Special to the Gazette.
El Dorado, Feb. 1.—The Gulf Refining Company has completed a derrick and ordered a string of heavy drill stem from Louisiana for a deep test on the Louis Werner Sawmill Company land in Section 5-16-16, Union county. The test will be drilled to 7,000 feet or deeper. It is believed the well will be ready to spud in within the next week. The test is in the northeast corner of 6-16-16, about five miles west of Smackover and a short distance from the Ouachita county line, and in the vicinity of the Saxon City shallow pool. The Gulf has a large number of shallow producers in the area, and several years ago drilled a 3,200-foot test near the present location. No test of the proposed well will be made above 3,200 feet. Gulf has a block of about 1,500 acres of leases.

Only one other test has been drilled to 7,000 feet in this section. Lion Oil Refining Company drilled to 7,100 feet in the Hayes well in the Smackover field about five miles east of the proposed deep test. The last 1,300 feet of the Lion well went through rock salt.

daily. It was flowing about 30 to 35 barrels of oil an hour with a considerable amount of drilling mud and fresh water. There was no trace of salt water.

Swabbed and washed, the well is flowing through tubing. The oil is coming from the Taylor sand at about the same depth as other wells in the field. The well is showing a good gas pressure.

The well extends the field about a quarter of a mile to the east from the producer of the Alice-Sidney Oil Company in the same section.

Today's producer came on the heels of two good showings in drill stem tests in Rainbow City wells yesterday. Casing was set by H. L. Hunt in his Gregory No. 12 in section 10-17-14 after a good showing of gas, and between 900 and 1,000 feet of oil showed in a 25 minute test of the W. E. Gregory Estate No. 1 well of J. E. Crosbie & Short and Hayes in section 15-17-14, the first well to reach the sand in that section to the south of production.

Tests of Deeper Oil Sands Of Union County Planned.

Special to the Gazette.
El Dorado, Feb. 7.—Progress in plans for developing what are believed to be deeper oil sands in Union county are going forward. El Dorado men are negotiating with H. L. Hunt to drill below 7,000 feet in the Rainbow field. The Hunt well in 10-17-14 is coring at a depth of 4,400.

Progress is being made in the Gulf test which is expected to go below 7,000 feet. This location is in section 5-16-16. This test is located in the vicinity of a dry hole, the well having been drilled to 3,387 feet.

Good Producer in Rainbow City Field Completed.

Special to the Gazette.
El Dorado, Feb. 8.—Another good producer was completed in the Rainbow City field northeast of El Dorado today.

The well is the Taylor No. 5 of the S. H. A. Oil Company in Section 10-17-14. The well is reported good for about 1,000 barrels daily. It shows no water.

Although on the same farm as the discovery well, the new producer extends the deep sand area about a quarter mile to the west.

The well loomed as a good producer in a drill stem test recently and started flowing late today after having been swabbed only a short time.

Completion of this well is expected to lead to the drilling of several offset wells.

216
New Oil Well in Union County Producing 200 Barrels.
Special to the Gazette. Feb. 9, 1935
El Dorado, Feb. 8.—The Vines No. 2 of the Reuter Oil Company in the Hi-bank area, a new pool southeast of El Dorado, will be a producer of approximately 200 barrels per day, it was estimated after the well had pumped a short time. The well is in the southwest corner of the southwest quarter of the southeast quarter of section 29-14-14 about six miles from El Dorado. During the first 11 hours after the well was placed on the pump it produced 85 barrels. The well was placed on the pump after considerable difficulties due to sanding up. An even larger producer may develop after the well cleans itself out.

New Well Extends Rainbow City Field to the West.
Special to the Gazette. 2/14/1935
El Dorado, Feb. 13.—The S. H. A. Oil Corporation completed its fifth producer in the Rainbow City Taylor sand when its Taylor No. 5 was brought in for a 1,000-barrel well in section 10-17-14 on the same farm as the discovery well in the new sand. It is half a mile west of present production and is considered a west extension of the field. The well is considered one of the best producers in the area.
A new well has been started just east of the El Dorado city limits near the Root refinery plant. The well is located in the northwest quarter of the southwest quarter of section 35-17-15 and is being drilled by the Gordy Drilling Company.
The deep test well of H. L. Hunt in the Rainbow City area is drilling below 4,500 feet. The well is the Gregory No. 15 which Hunt deepened from the Gregory sand. The well is located in section 10-17-14.
Permit has been issued for the Gulf Refining Company's deep test in the Smackover area in the southwest quarter of the southwest quarter of section 5-16-16. The test is known as the Louis Werner Sawmill Company No. 1. The location is several miles east of Smackover near Griffin and is seven miles east of a deep test drilled several years ago by the Lion Oil Refining Company near Hayes City.
The tests in the Rainbow City area are expected to be completed in a few days. One is the Dumas No. 3 of C. E. Murdock in section 11-17-14 and the other is the Gregory A-1 of the Lion Oil Refining Company in section 11-17-14.

Three New Deep Test Wells in Rainbow Field.
Special to the Gazette. 2-24-35
El Dorado, Feb. 23.—Three new deep tests in Union county and several operations in the Rainbow and in wildcat territory, drew the attention of the oil fraternity the past week. Rainbow field drilling operations settled to the lowest level since discovery of the 3,360-foot sand, with two new wells started. Dr. J. S. Rushing started work on the C. F. Gregory No. 1 in the south half, northwest, southwest of 10-17-14, and J. E. Crosbie is drilling the west part of section 10.
The deep test of H. L. Hunt, known as the Gregory No. 15, in 10-17-14, center of Rainbow field, is below 5,070 feet, and the owner expects to pass through the red beds at 5,200. This is the deepest in Rainbow and is considered a key test.
The Gulf Refining Company is preparing to start on its Louis Werner Sawmill deep test in 5-17-17, three miles west of Smackover. This well will be drilled to 7,000 or 8,000 feet.
Joe Modisette is below surface casing on his deep test on the Gibson land in section 6-18-13, near Lawson, and is working on a shallow test in the same section.
A wildcat being drilled by George Pace and others in section 24-18-12, near Strong, is checking favorably, and some trading in leases has been reported.

Several Southern Arkansas Tests Near Pay Sand.
Special to the Gazette. 2/28/1935
El Dorado, Feb. 27.—Oil interests are watching wells nearing pay sand in the Rainbow City field, the Camden area, and an outside test southeast of El Dorado.
In the Rainbow City area a showing of oil is reported to have been obtained in cores on the J. D. Gregory No. 4 of H. L. Hunt in Section 10-17-14. The showing was made at a depth of 3,382 feet. The well is being deepened to the Taylor sand.
Coring is in progress in a mixed oil sand and gumbo in the Jesse W. Craig No. 1 of the Gordy Drilling Company in Section 35-17-15 just outside the El Dorado city limits to the southeast. The Gulf Production Company is ready to start drilling on the Lewis Werner Sawmill Company No. 49 in Section 5-16-16, a 7,000-foot deep test near Griffin. Derrick has been completed. The crew expects to spud in this week.
H. L. Hunt is down 5,070 feet in his deep test Gregory No. 15 in Section 10-17-14 in the Rainbow City field.
In the Lawson area southwest of El Dorado, Joe Modisette has resumed drilling below surface casing in his deep test well and the shallow sand well, both in Section 6-18-13. The deep test will be drilled to 4,000 feet while the shallow well is expected to hit good formation at about 2,700 feet. Progress is being made on two test in the Rainbow City area. J. E. Crosbie is drilling around 3,060 feet on his No. 2 well and is expected to start coring soon. The test is in the west edge of the field in Section 10-17-14.
The Alice Sidney Company has surface casing on the Gregory No. 1 in Section 10-17-14, an outside test, about a quarter-mile west of production.
C. E. Murdock plans to recement casing on his Dumas No. 3 in Section 11-17-14 after the first test failed to make a producer.

TEST IN LAWSON AREA STRIKES GAS
Daily Production of 10,000,000 Cubic Feet Indicated: Setting Casing.

Special to the Gazette. 3/6/1935
El Dorado, March 6.—A big gasser was indicated for the Lawson area today in a drill stem test on one of two wells in progress in that territory. It is the L. Hill No. 1 of Joe Modisette in the southeast corner of the southeast quarter of the northwest quarter of Section 6-18-13.
In the test this morning the well was estimated to be showing from 8,000,000 to 15,000,000 cubic feet of dry gas daily. Best estimates were that the well would be good for around 10,000,000 cubic feet daily.
The gas showing was said to have been obtained at 2,560 feet. The formation was hit higher than expected, as the gas well had been anticipated around 2,700 feet. Plans went forward for setting of casing at once. The pipe is to be run in the hole tonight.
The Hill test is one of two wells that Joe Modisette is drilling near Lawson. The other, a deep test, is the J. M. Gibson No. 1 in the southeast corner of the southeast of the southeast of Section 6-18-13. The well is to be taken to 4,000 feet. Surface casing has been set in the well.
Oil men today were watching the Gregory No. 1 well of J. E. Crosbie in Section 10-17-14, Rainbow City area, which was due to be completed as a producer late today and extend the deep sand area to the west.

New Rainbow Well Likely Plug Drilled in Hunt's Gregory 16; Patterson Well Flows.
May 12, 1935

El Dorado — Completion of another well in the Rainbow City field is expected Sunday or Monday. The well is the Gregory No. 16 of H. L. Hunt, in section 10-17-14. Plug had been drilled tonight and it was expected that a producer may be obtained by late Sunday or early Monday.
Earl Patterson's well, from a new sand in the old El Dorado East field, completed Friday as a 200-barrel producer, was still flowing today. The sand trouble is believed to have cleared up. The well is the Smith No. 1 in section 29-17-14, and its completion as a producer is expected to bring about more activity in that vicinity.
Foy F. Roberts announced Saturday that further steps for drilling a wildcat deep test in the Calion area probably will be taken within a few days. The operation has been delayed by high water.
Roberts has derrick up for the well, Calion Lumber Company No. 1, in the northwest quarter of the southeast quarter of section 10-16-14. The well is close to the Ouachita river and is in the vicinity of the Calion bridge.
He plans to drill to 3,500 feet, but expects to pick up a sand around 2,594 feet at the same depth at which good showings have been obtained in other wells in that area. The well is being drilled on a block of about 3,000 acres.

Gregory No. 15 Deep Test Well To Be Plugged Back.
Special to the Gazette. 5/15/1935
El Dorado, May 15.—H. L. Hunt, drilling the deep test in the Gregory No. 15, in Section 10-17-14, will plug back to 6,500 feet and set casing at 6,450 feet for a test of a 200-foot sand of saturated lime.
The work of setting the casing was begun this afternoon. The saturated lime was passed up for the completion of the test to a depth of 7,000 feet.
It also was reported today that the Gulf Company, drilling a deep test in the Smackover field, is considering setting casing at 5,800 feet. This well is located in Section 5-16-16, and has been drilling near the 6,000-foot point.

Another Delay in Test of Deep Well Near El Dorado.
May 20, 1935
El Dorado, Ark., May 19 (P).—Difficulty in setting a packer delayed today the completion of the H. L. Hunt deep oil test on the Gregory farm in section 10-17-14 of the Rainbow City field. The packer became lodged before reaching its intended position and had to be brought and set again. Swabbing is expected to be started tomorrow.

Hetty Doss Well in Rainbow Field Making 100 Barrels.
Special to the Gazette. May 22, 1935
El Dorado, May 21.—Swabbed in after being sanded up for a time, the Hetty Doss well of J. E. Crosbie and the S. H. A. Oil Company, in Section 10-17-14, Rainbow field, was flowing today at the rate of more than 100 barrels of oil a day. The well is making a large amount of water. It is in the Taylor sand below 3,400 feet.
H. L. Hunt has decided to plug back a second time on the Gregory deep test in Section 10-17-14. The well failed to produce at 6,445 feet. The third test will be made at around 3,475 feet. The first test was made at 6,911, where a show of oil and gas was found.
Gulf Refining Company is drilling ahead at 6,100 feet on the Louis Werner sawmill well in Section 51-16-16, west of Smackover.
Earl Patterson is preparing to standardize the Smith No. 1 in Section 29-17-14, old El Dorado East field, which came in 10 days ago good for around 100 barrels daily.

Deep Tests Hold Attention In South Arkansas Fields.
Special to the Gazette. 5-28-35
El Dorado, March 27.—Deep test wells are the center of attention in the South Arkansas oil field, with work progressing on four. Following a drill stem test on the Gibson No. 1 deep test of Joe Modisette, El Dorado producer, in the Lawson area in which a small showing of oil and gas was made, drilling has been resumed. The drill stem test was made around 2,600 feet, about the same depth at which the Hill No. 1 was completed for a gasser. The test was a fair showing of oil and some gas. The well is in section 6-18-13 and Modisette plans to drill to a depth of about 4,000 or 5,000 feet.
Oil men are keeping a close watch on the Gregory No. 15 deep test of H. L. Hunt, in the Rainbow City field, and the Gulf deep test in the Smackover area near Griffin. Another deep test has been started in the old El Dorado east field on the Smith land in section 29-17-14 by Earl Patterson. The test is near the site of a gas well obtained by the Gulf Refining Company at a depth of 2,859 feet in 1929.
Three new tests are being started in the western edge of the Rainbow City field following completion a week ago of two good tests in that area. The Alice Sidney has rigged up for the Gregory B-1 in section 10-17-14, as has the Ruston Drilling Company for a test in the same area. The S. H. A. Oil Company and J. E. Crosbie, Inc., have completed derrick for a test in the same area.

Two New Producers Indicated In Rainbow City Field.
Special to the Gazette. 4/3/1935
El Dorado, April 2.—Two more good producers for the west edge of the Rainbow City field were indicated by drill stem tests on two of the three wells being drilled in that area. The Alice Sidney Oil Company has set casing in the Gregory B-2 in Section 10-17-14, following a good showing in a drill stem test. The well is on the same lease as the Gregory B-1, which was completed for a good producer two weeks ago.
The other showing was obtained today in a drill stem test on the Hetty Doss Warren No. 1 of J. E. Crosbie, Inc., and the S. H. A. Oil Corporation, a joint operation in Section 10-17-14.
The Crosbie well flowed for a time and tonight was estimated good for about 200 barrels daily. Bottom of the hole is at 3,300 feet.
The deep test of H. L. Hunt in Section 10-17-14, the Gregory No. 15, has passed the 6,000-foot mark and tonight was reported at a total depth of 6,196 feet. It is expected that the well will be taken to a depth of 7,000 feet. Seven-inch casing was set in the well at a depth of 5,338 as a protection of the hole.
The Skelly Oil Company is preparing to drill deeper on the Kelly No. 1 in Section 9-17-14. This well is at a depth of 2,700 feet. It will be taken to the Taylor sand at around 3,200 feet.

Hunt Deep Well in Rainbow City Field to Be Tested.
Special to the Gazette. 4/11/1935
El Dorado, April 10.—Equipment is being brought here from east Texas preparatory to testing the H. L. Hunt deep test well in the Rainbow City oil field. The test will be made tomorrow or Friday.
The crew is coring at 6,535 feet. Tubing will be run in the hole for the test. The well is in the big lime formation from which wells in Oklahoma, Louisiana and Texas are producing. The well is about 600 feet below the Redbeds and has been in the lime formation since passing the redbeds. It is planned to take the well to 7,000 feet if necessary.

Rainbow City Deep Sand Well Test to Be Continued.
4/13/1935
El Dorado, Ark., April 12 (P).—Testing of the deep sand well of N. L. Hunt in the Rainbow City oil field will be continued tomorrow. Swabbing failed to bring it to the completion stage today. The well, Gregory No. 15, in section 10-17-14, developed stronger gas showings during the swabbings late in the day. More tubing will be run into the test tomorrow to close up the more than 700 feet of open hole below the casing.

Throng Watching Deep Sand Test
April 12, 1935
El Dorado—Testing of H. L. Hunt's deep sand well in the Rainbow City field continued today, with a large crowd of El Dorado oil men and scouts from other states on hand. Swabbing was resumed early this morning and it was still in progress at noon. When work was resumed this morning the well showed 80 pounds of pressure on the tubing.
There were no developments during the morning of swabbing with water and mud coming from the well. The hole is nearly full of fluid and this has not been lowered greatly by the swabbing operations. The crew was scheduled to continue swabbing during the afternoon.
The well is the Gregory No. 15, in Section 10-17-14. Total depth is 6,545 feet with tubing 350 feet off the bottom.

Interest Centered in Rainbow City Oil Sector.
Special to the Gazette. May 31, 1935
El Dorado, March 30.—With taking of cores to be resumed on the Hunt community deep test and several new tests rapidly approaching the interesting stages, interest of the El Dorado oil fraternity today centered in the Rainbow City field.
The Hunt well, Gregory No. 10, in section 10-17-14, will be coring again in a few days after the setting of seven-inch casing at a depth of 5,838 feet. The casing was set as protection for the hole as it is planned to take the well to 7,000 feet or deeper.
On the west edge of the deep sand production area, the Alice Sidney Oil Company is showing the way in the drilling of three new tests. This company is drilling around 3,000 feet on the Gregory B-2, in section 10-17-14. J. E. Crosbie, Inc. and the S. H. A. Oil Corporation are drilling at 2,700 feet on the Hetty Doss Warren No. 1, a joint operation in the northeast of the southwest of the southwest of section 10-17-14.
In that vicinity the Ruston Drilling Company is drilling around 2,000 feet on the third new test.
Besides the Hunt deep test there is one other operation in progress at Rainbow City. The Skelly Oil Company is preparing to drill deeper on the Kelly No. 1, in section 9-17-14. This well is down 2,700 feet. It will be taken to the Taylor sand around 3,200 feet.

Drilling Resumed on H. L. Hunt Test at Rainbow City.
Special to the Gazette. 4-13-1935
El Dorado, April 17.—Drilling was resumed this morning on the H. L. Hunt oil test in Section 10-17-14 in the east of El Dorado. From the Urbana Rainbow City field after the hole had been cleaned out last night. Some many high grade petroleum products showing of oil has been obtained in such as gasoline, fuel oil, tractor fuel, cuttings.
Tubing, which had become jammed in the hole Saturday when it was decided to drill deeper after two days of unsuccessful testing, was removed yesterday. Part of the tubing was removed Saturday and 30 joints were removed Monday. The crew had little trouble in recovering the tubing as catches had been installed in the hole.
The well had been drilled eight feet deeper today and is at a depth of 6,553 feet. A rock bit is being used and cuttings are being taken with the drill bit. No cores have been taken.
The operators plan to drill through the big lime formation and explore the strata beneath. The well will be drilled to a depth of 7,000 feet if necessary.

Increase in Oil Production May Authorized.
Washington, April 17 (P).—Secretary Ickes today authorized a May daily average crude oil production of 2,561,200 barrels. This compared with a 2,527,300 barrel average during April. The increase was designed chiefly to permit higher gasoline production to meet spring demands. State quotas included: (In barrels) Arkansas, off 400 to 30,300.

Two Test Wells Hold Interest in South Arkansas.
Special to the Gazette. April 25, 1935
El Dorado, April 24.—Interest of the oil fraternity of south Arkansas centers in tests scheduled to be made on two wells, one in the Rainbow City field on the H. L. Hunt deep test well in Section 10-17-14, and the other on the Smith No. 1 well of Earl Patterson, in Section 29-17-14.
A test is expected to be made soon on the Patterson well at a depth of 2,808 feet in the Blossom sand. The sand is said to have been struck about 20 feet above that depth. The Patterson well is the first to be drilled in the old East field since 1928. The present test will be the second hole in the present operation, as Patterson was forced to skid over and start a new well when a fishing job developed at 2,707 feet in the first hole on the lease.
The H. L. Hunt deep test is shut down at 6,920 feet, with preparations made for a Schumberger test. At present the well is in the salt dome and the electrical test will be made to determine if there is oil in the present strata. Showings of oil were made in cuttings taken from the drill bit in the big lime formation and it is believed that there may be oil in the salt formation or below. The well was scheduled for a 7,000-foot test.
Hunt is preparing to make a new test in the Rainbow area in Section 10-17-14 and will be an offset to the south of the Taylor No. 5 producer of the S. H. A. Oil Corporation. The new test will be known as the Gregory No. 15.
The Louis Werner Sawmill No. 1 of the Gulf Company, in Smackover field near Griffin, is below the 5,000-foot level, drilling in the big lime formation. The well is in Section 5-16-16.

NEW REFINING UNIT AT LION OIL PLANT
Constructed at Cost of \$40,000 and Has Daily Capacity of 3,000 Barrels.
April 28, 1935
A new crude oil refining unit recently has been added to the equipment of the Lion Oil Refining Company plant at El Dorado. The unit, which has a daily capacity of 3,000 barrels, was constructed at an expenditure of approximately \$40,000. It has been under construction for the last six weeks and is expected to be in operation in the next few days.
The primary object in the construction of the new unit, Lion officials said, is to handle to better advantage crude oil from the rich Urbana field, 15 miles deep test well in Section 10-17-14 in the east of El Dorado. From the Urbana Rainbow City field after the hole had been cleaned out last night. Some many high grade petroleum products showing of oil has been obtained in such as gasoline, fuel oil, tractor fuel, furnace oil and road oil, all of which will be made to meet state specifications.
Col. T. H. Barton, president of the Lion Oil Refining Company, said: "The new unit is the most modern development in refinery equipment. The refining unit is constructed to utilize to the fullest extent every particle of raw material, leaving no residue which could be made into valuable by-products in other states. This is another example of Lion's policy of keeping Arkansas money at home."
When the new equipment is put into operation, the Lion refinery will have six modern units of this kind in daily operation, manufacturing nearly every known petroleum product. A major portion of the products manufactured by Lion is marketed by its subsidiary company, the Lion Oil Sales Company, which operates service stations throughout Arkansas, Mississippi, Alabama and Tennessee.

Test to Be Made in Deep Well In Smackover Field.

Special to the Gazette.

El Dorado, June 6. — A test will be made of a lime formation in the deep test well of the Gulf Refining Company near Griffin. Casing has been set at a depth slightly below 6,300 feet. The well is the Louis Werner Sawmill Company No. 1 of the Gulf Company in the Griffin area of the Smackover field. It is located in Section 5-16-16. The seven-inch pipe is believed to be the longest string ever set in an Arkansas well.

Decision to set casing came after a Schlumberger test was made.

Gulf Test Well Near Griffin To Be Drilled Deeper.

Special to the Gazette.

El Dorado, June 13.—The Gulf Refining Company's deep test well in the Smackover area, near Griffin, will be drilled deeper, officials of the company announced this afternoon after a test at 6,432 feet failed to make a showing.

The test was made in a lime formation which made a showing of oil when the well was being drilled. Seven-inch casing was set for testing of the lime formation and deeper drilling in case the test should fail to make a producer.

The well is the Louis Werner Sawmill Company No. 49 of the Gulf Refining Company, and is located in Section 5-16-16, southwest of Griffin.

New Test May Extend Rainbow City Field.

Special to the Gazette.

El Dorado, June 19.—Possible extension of production in the Rainbow City vicinity two miles east looms as a result of a showing of oil obtained in a drill stem test on the Riley-Furlow No. 2 in Section 12-17-14 this afternoon.

A test was made at 3,233 feet and a showing of oil and water was obtained along with 6,000,000 to 7,000,000 cubic feet of gas. Operators were not satisfied with the showing and decided to drill deeper in the hopes of striking the Taylor sand slightly below 3,300 feet.

The well was an old producer in the Crane sand at about 3,100 feet. It is located two miles east of present production in the Rainbow City area and is about 14 miles east of El Dorado.

Operators on the Gulf Refining Company's Louis Werner No. 49 in the Smackover area near Griffin are awaiting the arrival of the three-inch drill pipe to resume work of deepening the test.

Operations on the Jones test in the Callon area temporarily have shut down but are expected to be resumed soon. Also in the Callon area, Roberts, trustee, is expected to start drilling below surface casing in a few days on a test near the Callon bridge. Sam Hunter is expected to start moving in in a short time to his test in Section 33-16-13 across the Ouachita river in Calhoun county.

Test Wells Being Cored Near Griffin and Callon.

Special to the Gazette.

El Dorado, July 2.—The Gulf is coring at a depth of 6,611 feet on the Louis Werner Sawmill Company No. 49 in section 5-16-16, near Griffin. Mrs. R. K. Jones is coring at 3,246 on the Davis No. 1 wildcat in section 28-16-14, Callon area.

C. H. Murphy of El Dorado is rigging up for his test in section 7-23-1 west, in Union parish, La., about two miles south of the Arkansas line. In Columbia county derrick has been completed and work soon will start on the test in section 12-17-22, six miles west of Magnolia. D. D. Brunson and Lloyd Gilbreath of Ada, Okla., are planning a 3,500-foot test. N. O. Olds of Camden is the contractor.

In the east field two blocks are reported being assembled for tests northeast of the Patterson well, between his producer and the Rainbow City field. One block is reported in section 20 and the other in section 21.

Gulf to Penetrate Salt Dome In Deep Test Well.

Special to the Gazette.

El Dorado, July 11.—A determined effort to penetrate the salt dome in search for deep oil is being made by the Gulf Refining Company in its deep test well in the Griffin area of the Smackover field. The salt dome has never been pierced by an oil well in south Arkansas and only three wells have been drilled any distance into the dome.

The Gulf's well, the Louis Werner No. 49 in Section 5-16-16, this week became the deepest well yet drilled in Arkansas when it passed the depth to which a

Lion deep test well was drilled several years ago.

The Gulf well had been drilled to a depth of 7,486 feet last night.

The salt dome was struck in the well at 6,631 feet, and the drill has been in rock salt since. Reports from the well were that a core taken Tuesday showed clear rock crystals, an official of the company saying that the salt is as hard as stone and clear enough so that a newspaper could be read through it.

The company, he said, is determined not to "look back" but drill through the salt dome in an effort to explore the underlying strata. Geologists have estimated that the salt dome is 1,500 feet thick which would make the bottom of the salt at slightly below 8,100 feet.

Seven-inch casing was set in the Gulf well at 6,224 feet, and the hole is reported to be in excellent condition for the deep drilling.

It has been predicted in El Dorado and south Arkansas oil circles that a big pool of oil will be struck once the salt dome is pierced.

South Arkansas Oil Interest Shifts to Rainbow City.

Special to the Gazette.

El Dorado, July 18.—Interest of the oil fraternity in South Arkansas has shifted back to the Rainbow City field where an outside test is showing signs of becoming a producer. The well is the Furlow No. 1 of the Ohio Oil Company in the southwest quarter of the northeast quarter of section 12-17-14, an old Crane sand producer being deepened. Casing has been set for testing of the Gregory sand at 3,250 where a showing of oil and water was made in a drill stem test. If completed for a producer, the well will extend the field a mile to the east of present production. The Gulf deep test well in the Griffin area is drilling at 7,560 feet.

Breakdown Causes Delay In Deep Test Near Smackover.

Special to the Gazette.

El Dorado, July 24.—A breakdown of equipment has caused a delay in drilling operations on the Gulf deep test well in the Smackover area near Griffin, but operators were expected to make repairs and resume drilling tonight or tomorrow.

The breakdown occurred Monday morning when the well was at a depth of 7,645 feet in the redbeds below the big salt dome that was penetrated two weeks ago. Cores are being taken to explore the formations below the salt dome.

It is expected that the well will be taken to a depth of 8,000 feet if necessary. The well is the Louis Werner No. 49 of the Gulf Company in Section 5-16-16.

Gulf's Louis Werner Deep Test Well Down 7,803 Feet.

Special to the Gazette.

El Dorado, July 31.—The Gulf Refining Company is drilling at the rate of about 25 feet a day on its Louis Werner deep test in the Griffin area of the Smackover field, in Section 5-16-16. The well is down 7,803 feet. Drilling was resumed this week after taking cores of the formation. The well is at present drilling in gray shale formation with no showing of oil.

Drill stem has been placed on the ground for a depth of 8,000 feet, and there have been no indications from company officials that the well will be drilled any deeper. Seven-inch casing was set at a depth of 6,423 feet when a test was made in the redbed formation. Drilling is now being done with three-inch drill stem.

Gusher in Old Urbana Field In Saturday

'Surprise' Well Brought in by Marine Making 500 Barrels.

El Dorado.—One of the best producers completed in recent months in the Urbana field, to the southeast of El Dorado, was brought in Saturday by the Marine Oil Company.

The well, one of the first flowing producers in that area in recent years, is believed good for between 500 and 600 barrels daily. The well gauged 75 barrels during the first three hours.

Swabbed in shortly after noon today, the well started flowing and immediately gave signs of being the best producer in the area in months. There have been other producers completed in the field in recent years but most of them have been pumpers.

The new well is near other production being slightly to the west of other wells. It is the E-5 well on the Thompson tract, in section 10-18-13.

Immediately upon completion of the well officials of the Marine Oil Company, an El Dorado concern, announced plans for the immediate drilling of another well. The new test will be on the Simmons land to

the west of the Thompson producer. The crew will start moving to the location Monday.

Members of the El Dorado oil fraternity continue to keep close watch on the deep test of the Gulf Refining Company on the Louis Werner Sawmill Company land, in section 5-16-16, near Griffin. The well was drilling today at a depth of 7,887 feet. It is in gray shale.

Another deep test is in the making. This will be a well by the Hunter interests of Shreveport near the middle of section 33-16-13, Calhoun county, across the river from Lock 8. It is understood that the well will be taken to 6,000 feet.

Deep Oil Test Near Griffin Reported at 7,917 Feet.

Special to the Gazette.

El Dorado, Aug. 7.—The Louis Werner No. 49 deep test of the Gulf Refining Company in Section 5-16-16, near Griffin in the Smackover oil field, is at a depth of 7,917 feet in a hard, gray shale, it was reported tonight. It has been reported that the company may drill below 8,500 feet in the search for deep oil.

In the Rainbow City oil area the Ohio Oil Company is planning to set a full string of casing in its Furlow No. 1 in the southwest quarter of the northeast quarter of section 12-17-14, for a test of the Taylor sand.

The well is being deepened to the Taylor sand and it is at present below 3,000 feet. If a producer should be developed it will extend the producing area two miles east of present production.

DRILLERS ABANDON TEST AT 7,973 FEET

Depth Is Greatest Ever Reached in Arkansas, Louisiana or Texas.

Special to the Gazette.

El Dorado, Aug. 14.—After drilling the deepest well ever drilled in Arkansas, Louisiana or Texas with no showing of oil below the Meakin sand at 2,250 feet, the Gulf Refining Company stopped operations on its deep test well in the Smackover area, near Griffin, at a depth of 7,973 feet this morning. The well was located in Section 5-16-16. H. Gandy was superintendent.

The Gulf company began setting up the derrick and rig on February 24 and drilling operations started early in March. The Meakin sand was struck at 2,250 feet and 10-inch casing was set at 2,293 feet.

Seven-inch casing was set at 6,224 feet when a test was made of the red beds formation and the remainder of the hole is open. The big salt dome was struck at 6,631 feet and was penetrated at 7,488 feet.

A 116-foot steel derrick was used in the operations and total cost of the well was approximately \$100,000.

Two Permits Issued.

Permit was issued this week to the Marine Oil Company for drilling of another well in the Urbana area. The new well will be the M. H. N. Simmons No. 3 in the northeast quarter of the northwest quarter of Section 10-18-13. The new well follows the completion last week of the Thompson E-5 of the Marine, also in Section 10.

Permit was issued to John D. McCall and J. C. Kelly of Beaumont, Tex., for drilling of a well in Dallas county. The well will be the Ray Owen No. 1 in the northwest quarter of the southwest quarter of Section 26-10-16.

Surface Casing Being Set On Union County Deep Test.

Special to the Gazette.

El Dorado, Aug. 16.—Setting of surface casing on the Laney No. 1 deep test well of the Arkansas Southern Oil Company, in Section 30-19-16 in the southwestern part of Union county, has been completed and drilling will be resumed in about three weeks after title work is completed.

The well, located in the southeast quarter of the northwest quarter of the southeast quarter of the section, will be a 4,500-foot test. A 122-foot re-enforced wooden derrick is being used. The well is a quarter-mile west and a half-mile north of the old Coats trustee well on the McDuffie land in Section 32, which was drilled in 1929 and made a showing of three and one-half feet of oil saturated sand in a core at 4,053 feet in the Trinity sand in the Glenrose group below the anhydrite, similar to the new Rodessa field in north Louisiana. In the Coats well anhydrite was encountered at 3,390 feet and oil sand at 4,053 feet. In the Rodessa well the anhydrite was encountered at 5,200 feet and oil sand at 6,043 feet.

The company also has leases on 720 acres a half-mile south of the 500-barrel well recently drilled by the Marine Oil Company. The well is located on the Selassie tract, in section 10-18-13.

New Refining Plant Operating Near El Dorado.

Special to the Gazette.

El Dorado, Sept. 19.—Operated and controlled by local interests, the Bright Star Company refinery has been opened in the old Kettle Creek area and daily is using approximately 1,000 barrels of crude oil in the manufacture of lube distillate.

Although only about 30 men are employed at present there is a chance of adding to the force with the increase of business, operators said.

The lube distillate is shipped to the MacMillan refineries at Norphlet for manufacture into lubricating oils.

The new company has its own laboratories. The refining equipment is a vacuum distillation affair.

Plans Made for Two Oil Tests In El Dorado Area.

Special to the Gazette.

El Dorado, Sept. 24.—Derrick has been erected for a test known as the Alfred Sloan No. 2 in the southwest corner of the southeast quarter of the northwest quarter in section 14-17-15 northeast of El Dorado. This will be the first test drilled in that area in several years. The crew will spud in a few days.

The Arkansas Southern Oil Corporation is completing arrangements to start work on its wildcat test in section 36-19-16 near the Louisiana line this week.

Coring is in progress below 3,100 feet in red beds in the well being drilled by Sam Richardson and associates in section 10-16-4 near the Callon bridge over the Ouachita river.

SIMMS CO. SELLS ARKANSAS WELLS

Liberty Oil Company Acquires Production in Smackover Area.

Dallas, Tex., Sept. 9 (AP).—Edward T. Moore, president of the Simms Company, announced today sale of the Smackover, Ark., production of the company to the Liberty Oil Company of Arkansas. The price was reported to be between \$150,000 and \$200,000.

The Simms Company, successor to the Simms Oil Company, retained some of the properties in the latter concern when it was sold to the Tide Water Oil Company. The Liberty Oil Company, Moore said, was organized by a group of Arkansas business men headed by R. N. Vickers.

Included in the sale were 45 wells with a daily production of 800 barrels, drilled on 450 acres of leases. The Simms refinery at Smackover, a 3,000-barrel cracking plant, was not included. Moore said the sale was a part of the liquidation of the old Simms Co., he was conducting.

Deep Test in Unproven Area Planned in Union County.

Special to the Gazette.

El Dorado, Oct. 26.—Plans for converting a wildcat well into a deep test in an unproven area of Union county featured oil activities of South Arkansas this week. What is expected to be made a deep test is the Richardson and Allen for a test to be drilled on the Proet Callon Lumber Company No. 1, located in the northwest corner of the southeast quarter of township 10-16-14 near the highway bridge over the Ouachita river at Callon.

The well is shut down at a depth of 3,511 feet. Operators announced that no oil formations have been encountered in the test but said that efforts are to be made to make a thorough test of all formations to a depth of 4,500 to 5,600 feet.

Another wildcat well, in South Arkansas that is temporarily shut down is the Kelly and McCall No. 1 of Ray Owens in northwest quarter of the southwest quarter of section 26-10-16 in Dallas county, near Holly Springs. The well is said to be shut down for lack of water. The test is at 1,470 feet.

What was said to have been a good oil showing of a sand encountered at slightly below 1,300 feet several weeks ago caused considerable trading in lease; in the area, but operators decided to drill deeper.

A new test of the Furlow sand encountered by the Ohio Oil Company in its Furlow No. 3 in section 12-17-14 will be made by James H. Dugan et al. The new test will be in the southeast corner of the southwest quarter of the northwest quarter of section 12-17-14.

The Ohio well is making about 10,000,000 cubic feet of gas daily from a sand between the Gregory and Taylor production levels and has been named the Furlow sand.

Two New Test Wells Planned In El Dorado Area.

Special to the Gazette.

El Dorado, Oct. 30.—The Marine Oil Company started drilling operations today on a new test well south of Strong. The Crosbie Oil Company of Tulsa, Okla., is scheduled to start drilling on a new test the latter part of the week. The new Marine well is the L. Jones No. 1 in the southeast quarter of the northwest quarter of Section 12-19-12, south of Strong. The Crosbie company is expected to start drilling in a few days on a test in the southeast corner of the southwest quarter of the northwest quarter of Section 12-17-14, to test a new sand found in the Furlow No. 3 of the Ohio company in the same area.

Drilling operations were resumed today on the Ray Owens No. 1 of Kelly & McCall in the northwest quarter of the southwest quarter of Section 26-15-16 near Holly Springs, in Dallas county, after a week's shutdown at 1,470 feet due to lack of water.

Two New Test Wells Started In Union County.

Special to the Gazette.

El Dorado, Nov. 9.—Drilling operations are well under way on two new wells started in Union county last week.

The Marine Oil Company is drilling below 2,500 feet on its O. G. Murphy, trustee, Jones No. 1, a wildcat test in the southeast quarter of the northwest quarter of Section 12-19-12 south of Strong. This well is in heretofore unexplored territory.

The Crosbie Drilling Company of Tulsa, Okla., is drilling below surface casing on a new location for its Sullivant No. 1 in the southeast corner of the southwest quarter of the northwest quarter of Section 12-17-14. The derrick was skidded over from the previous location after the hole was lost after having been drilled below 1,000 feet.

The well will be a test of a new sand encountered in the Furlow well of the Ohio Oil Company a half mile to the east. The new sand has been named the Forlow sand. It is between two sands producing in that area.

Benendum & Trees are drilling below 3,400 feet on their Henry Brigham No. 1 deep test in the northeast quarter of the southwest quarter of section 29-14-19 near Troy in Ouachita county. The test is scheduled for a depth of

6,000 feet unless oil is encountered at a lesser depth.

Joe Modisett is drilling below 4,800 feet on another 6,000-foot deep test well in Bradley county. The well is near the town of Bradley.

Leach and associates are expected to start operations soon on a 7,000-foot deep test well in Lafayette county. Several major companies, including the Ohio, Shell and Phillips, are reported to have large holdings in the area.

Permit was issued this week to T. J. Allen for a test to be drilled on the Union Sawmill Company land in the center of Section 8-17-12 near Pigeon Hill, in the eastern part of Union county.

Sullivant No. 2 May Be Good For 800 Barrels.

El Dorado, Ark., Dec. 13 (AP).—Crosbie & Robinson prepared today to set casing on their Sullivant No. 2 in Section 12-17-14 of the Rainbow City field after a drill stem test indicated an oil flow of from 800 to 1,000 barrels daily. The company cored the fifth producing sand in the Rainbow field at 3,160 feet. The operators will attempt to bring in the well next week. The well is an offset to Sullivant No. 1, discovered well in the new sand, now producing 500 barrels daily on the pump.

Four New Wells to Be Drilled East of Rainbow Field.

Special to the Gazette.

El Dorado, Dec. 20.—Announcement of four new tests to be made in the eastern section of the Rainbow field has been made following completion yesterday of the Sullivant No. 2 well of Crosbie and Robinson for a 1,000-barrel producer in section 12-17-14. All of the new tests are in the same section.

One of the wells will be the Sullivant No. 3 of Crosbie and Robinson. It will be located in the northeast corner of the southeast quarter of the northwest quarter of section 12-17-14. The Ohio Oil Company has pulled liner from its Furlow No. 3 in the northwest corner of the northwest quarter of the northeast quarter of the section and will drill to the new sand.

The Root Refining Company will drill two tests as offsets to the two new producers. They will be the Vessor No. 1 in the northeast corner of the northwest quarter of the southwest quarter of the section and the Finley No. 2 in the northwest corner of the northwest quarter of the southwest quarter of the section.

Rainbow City Field Activity Increased.

Special to the Gazette.

El Dorado, Dec. 7.—New activity has been started in the eastern section of the Rainbow City field as a result of the completion of the Sullivant No. 1 of Crosbie & Robinson last week, and an offset well has been started and

three new locations have been made for additional tests in the field.

Crosbie & Robinson have started operations on their offset to the No. 1 well which is located in the southeast quarter of the southwest quarter of section 12-17-14. The offset test is located in the southwest corner of the southeast quarter of the northwest quarter of the same section.

Surface casing has been set in the new well and drilling is well under way. Three other locations in the vicinity, two by the Root Refining Company and one by the Ohio Oil Company, have been made, but drilling operations have not been started.

Difficulty which developed last week-end in the Sullivant producer has been cleared up and the well is flowing again at a rate of about 500 barrels a day. The well had sanded up and it was necessary for the swab to be run in the hole to clean it out.

Sloan No. 1 on Pump.

Reports have been received here that the Sloan No. 1 well of the Petroleum Exploration Company, three miles northeast of El Dorado, will be placed on the pump for a small producer. The well is in section 14-17-15, and was completed at a depth of 2,150 feet. It had been drilled to a considerable deeper depth but trouble developed and the hole was plugged back to the sand encountered at 2,150 feet where the producer was made.

The company is reported to have made plans for other tests in the vicinity and there is a possibility that a deep test will be drilled in the area.

T. J. Allen is reported to be drilling below 2,000 feet in his Union Sawmill Company No. 1 in the southwest quarter of the southeast quarter of the northwest quarter of section 8-17-12 near Pigeon Hill in the eastern part of Union county.

Casing has been set for final testing of the Carter No. 1 well of W. G. Streett and Associates in the Bragg area southwest of Camden, Ouachita county. An oil sand was encountered at approximately 1,400 feet and cores were taken that gave indications of a producer. The well was drilled to a depth of 1,439 feet.

The sand encountered in the Carter test is believed to be the Nacatosh sand, the same sand from which the Bragg No. 1 well of T. J. Gaughan, two miles northeast of the Carter well, is producing 50 barrels a day on the pump.

The Carter test is in the southwest quarter of section 35-13-18. The sand was encountered at a lower depth than the Bragg well but the wells are at different elevations.

Plug of the well is expected to be drilled next week. Completion of the well for a producer is expected to result in considerable drilling activity in the vicinity of the two wells. Several dry holes have been drilled as offsets to the Bragg well since its completion last year.

The Service Drilling and Royalties Corporation of Shreveport has made a location and will start drilling soon on the Harry L. Elam and J. F. Magale Levi Garrett No. 1, a wildcat test, in the northeast quarter of the southwest quarter of section 13-17-20 in Columbia county. The well is expected to be taken to a depth of 4,000 feet for thorough testing of several known sands in that vicinity.

Clark County Test.
In Clark county, Bois Trinoff, trustee, has made location and started drilling operations on a wildcat test in section 27-8-18 to be known as the Gibbons No. 1. Another wildcat test is to be drilled in Garland county by J. E. Elliott et al. Derrick has been erected and drilling is expected to get under way soon. The well will be known as the Haust No. 1 and is located in section 22-2-22.

Two new wildcat tests are being drilled in Hempstead county. George L. Glass is rigging up on the O'Brien No. 1 test in the northeast quarter of the southwest quarter of section 32-12-23 and is expected to start drilling operations soon. F. W. Martin is also rig-

ging up on the Lafferty No. 2 in the southeast quarter of the northwest quarter of section 17-14-27.

The Beaver Petroleum Company has shut down at 2,240 feet on its Stinson No. 1 in the southeast quarter of the southwest quarter of section 27-4-2, Monroe county, after 10-inch casing has been cemented at 216 feet.

The C. W. Crank No. 1 of the King O. Corporation in the southwest quarter of the northwest quarter of section 32-12-23 in Miller county has been shut down at 3,225 feet. Location has been made for a test by Travis & Wair in section 18-20-27 in the same county. The test will be known as the Capps No. 1.

L. H. Mahan is drilling below surface casing on the Miller Land Company No. 1 in the southwest quarter of the southeast quarter of section 29-18-27 in Miller county and at the last report the Haynes Oil Corporation was drilling below 3,200 feet on the Embree No. 1 in the southwest quarter of the southwest quarter of section 9-20-28 also in Miller county.

Final testing is expected to be made soon on the DuBoise No. 1 of S. H. Riggs et al in the southeast quarter of the southwest quarter of the northwest quarter of section 35-15-24 in Lafayette county following the setting of casing at 2,800 feet after an oil showing from 2,814 to 2,822 feet.

The Southern States Gas Company Pine Woods Lumber Company No. 1, in the southwest quarter of the northeast quarter of the northwest quarter of section 10-22-22, Columbia county, is reported to be shut down at 1,904 feet.

The Snow Black Petroleum Company is well under way on its new hole on the Jerry Bedford No. 1 well in the southwest quarter of the southwest quarter of section 32-11-18, Ouachita county.

No report has been received here of progress on the Bingham No. 1 deep test of Benendum & Trees in the northeast quarter of the southwest quarter of section 29-14-19 near Troy in Ouachita county or the Holmes No. 1 well of the same operators in the northeast quarter of the southwest quarter of section 4-17-5 in Ashley county. At last report the Bingham well was at a depth of 5,200 feet and the Holmes well was at a depth of about 4,200 feet.

Drilling Activities Continue In South Arkansas.

Special to the Gazette.

El Dorado, Dec. 28.—Despite the Christmas holidays and the severe win-

ter weather during the week, drilling activities in the oil fields of South Arkansas continued this week with chief interest centered in the Rainbow City field where a third well is being drilled by the Crosbie interests and other operators are making locations or clearing ground for locations for tests to the new deep sand encountered several weeks ago in the eastern edge of the field.

Oil men also are watching the Streett test southwest of Camden in Ouachita county where a sand pump was installed to remove mud that has prevented the free flow of oil from a sand encountered at 1,401 feet. The well is expected to produce about 50 barrels of oil daily when placed on the beam.

Crosbie & Robinson spudded in Friday on their Sullivant No. 3 in the new production area of the Rainbow Field. The new well is expected to reach the new sand in about a week or 10 days. The No. 3 well is located in the northeast corner of the southeast quarter of the northwest quarter of section 12-17-14.

It is the third well to be drilled by the Tulsa (Okla.) concern. Two wells have been completed, the Sullivant No. 1 and the Sullivant No. 2. The No. 1 well, in the southeast quarter of the southwest quarter of section 12-17-14, was completed a month ago for a flowing well but later was placed on the beam and is producing approximately 500 barrels a day.

The No. 2 well, in the southwest corner of the southeast quarter of the northwest quarter of the same section, was completed last week for a producer of approximately 1,000 barrels.

Both wells have been turned into the same tank and were gauged Thursday at a production of 1,425 barrels of 32 gravity oil.

New Tests Planned.

The Root Refining Company is preparing to drill an off-set to the No. 1 Sullivant in the northeast corner of the southwest quarter of the southwest quarter of section 12-17-14. The same company also is planning another off-set test to the No. 2 Sullivant.

The Ohio Oil Company is clearing land for a location on the Pumphrey land as an offset to the Sullivant No. 2. The exact location of the Ohio test has not been announced.

The Ohio company also has made location for a test to be an east off set to the new test of the Crosbie interests. The well will be known as the Furlow No. 4, and is located in the northwest corner of the southwest quarter of the northeast quarter of section 12-17-14.

Liner was pulled in the Ohio's No. 3 Furrow well in preparation to drill to the new producing sand, but no work has been done on the deepening process.

The new sand has not been named, but probably will be called the Sullivant sand as it was in the Sullivant well that it first was encountered. The No. 1 Sullivant was completed in two sands, at 3,151 to 3,154 and 3,170 to 3,175 feet, and the No. 2 well was completed at a total depth of 3,178 feet with 24 feet of open hole for testing of both sands.

Reports have been heard in El Dorado that Dr. Shelton Rushing, pioneer

operator in the Rainbow field, is planning a test to the new sand on his Gregory lease in section 11-17-14. The test by Dr. Rushing is reported to be for the southeast quarter of the southwest quarter of the section. Dr. Rushing drilled the discovery well in the Rainbow field to the Gregory sand.

About a year ago Short & Hayes drilled a test to another sand, the Taylor, and completed several good producers which caused considerable new drilling and deepening of old holes.

Ouachita County.
Interests in Ouachita county continue to center in the Rath & Cartier No. 1 test of W. B. Streett and associates southwest of Camden in section 35-13-18. Placing of the well on the pump for an accurate gauge of production was delayed this week when a flow of mud clogged the oil sand.

A baller was used in the hole for several days when large quantities of oil free from water were brought to the surface but it was necessary to install a sand pump to remove the mud. Various oil men who have viewed the well have estimated that its production will be from 50 to 75 barrels a day when standard rig is installed. The oil is of 24.7 gravity with 17 per cent gasoline content with no salt. It is slightly heavier crude than the Smackover production.

The well is located in the southwest quarter of the northeast of section 35-13-18, about two miles southwest of the Bragg No. 1 producer of T. G. Gaughan completed a year ago for a 50-barrel pumper.

Additional tests in the area between the two wells are expected to be started a short time after an accurate production test of the Streett well can be made. Streett announced plans for an offset test to the new well as soon as work is completed on the first well.

J. D. Reynolds has made location for a test in the proven area of the southeastern part of Ouachita county, in the Snow Hill sector, and is expected to start operations soon. The well will be located in the southeast quarter of the southwest quarter of section 27-15-15.

It also is reported that the Phillips Petroleum Company is planning a deep test in the same section as the Reynolds well. The proposed well is expected to be drilled to a depth of 6,500 feet. Charles Murphy, El Dorado banker, and Eddie Jones, well known operator, are reported to be interested in the test.

Two Drilling Permits.

Only two drilling permits were issued by the state Conservation Department here during the week. One was for the No. 3 Sullivant well in the Rainbow field and the other was for a wildcat well in Hempstead county. The new wildcat will be known as the Vada Wheatley No. 1 of the Dixie Drilling Company of Hope and will be located in the northwest corner of the southwest quarter of the northeast quarter of section 14-11-26.

A permit issued to the Tri-State Oil Company for a test on the E. L. Beck land in the northwest corner of the south half of the southeast quarter of the southeast quarter of section 33-15-26 in Miller county was cancelled.

Six permits were issued to plug and abandon tests. Five were in Union county and one in Miller county. The Miller county permit was to E. J. Donohue for plugging of the Beck No. 4, in the southeast quarter of the northeast quarter of the southeast quarter of section 33-15-26. The Magnolia Petroleum obtained a permit to abandon the H. H. Slaughter No. 1 in the east half of the northwest quarter of the northeast quarter of section 9-17-16 in Union county.

Four permits to abandon wells were issued to the Sklar for tests on the Smith farm in Union county. The tests were the Smith Nos. 1, 2, 3 and 4, located near the four corners of the southeast quarter of the southwest quarter of section 18-16-15.

The Benedum Trees Oil Company filed log of its J. P. Holmes deep test well in section 4-17-5 in Ashley county that was abandoned several weeks ago.

The Ohio Oil Company is reported to have assembled 4,000 acres in leases in Lafayette county north of Lewisville

El Dorado, Ark., Jan. 2 (AP).—Col. T. H. Barton, president of the Lion Oil Refining Company, said today that the Arkansas petroleum industry faces the brightest outlook for 1936 than for the past six years.

"More plans are under way in south Arkansas now than there have been in the last six years, and more geophysical locations are being made now than in the last 15 years," Colonel Barton said.

He added that major oil companies believe that Arkansas has additional oil reserves that have not been discovered. The close of 1935 saw increased activity in the industry here as the first producers were completed on the eastern side of the Rainbow City field.

Discovered here in 1921, oil now is Arkansas's greatest natural asset. The state ranks fourth in production.

To Continue Search for Deep Oil In South Arkansas.

Special to the Gazette.

El Dorado, Jan. 2.—A new deep test in the continued search for deep oil in south Arkansas will be drilled in the Snow Hill section of the Smackover field in Ouachita county by the Phillips Petroleum Company.

Permit for the new test, which will be drilled to a reported depth of 6,500 feet, was issued today. The well will be known as the J. D. Reynolds No. 1, and is located in the southeast quarter of the northwest quarter of section 27-15-15. J. D. Reynolds is a well known Camden oil operator. It also is reported that Charles Murphy, local banker, and Eddie Jones, former local operator, also are interested in the test.

The latest deep test drilled in this area was a well of the Gulf Refining Company near Griffin that was drilled below 8,000 feet before being abandoned. The well was drilled through the big salt dome and is the only well in south Arkansas to be drilled through the formation. No oil sands were encountered.

About the same time that the Gulf well was being drilled H. L. Hunt drilled a deep test in the Rainbow City area. The test was taken below 6,900 feet and was abandoned in the redbeds and lime formation.

Several years ago the Lion Oil refining Company drilled a deep test in the Hayes City section of the Smackover field. The well was abandoned at about 7,300 feet in the salt dome after drilling about 1,300 feet through salt.

Drilling is under way on the Sullivant No. 3 well of Crosbie & Robinson, in the Rainbow City field. The well is located in the northwest of the southeast of the northwest of section 12-17-14 and is at a depth of 2,550 feet.

Two additional permits have been issued for tests in section 12. One was issued to G. W. James for a test on the M. J. Sullivant land in the northeast of the northwest of the southwest of section 12-17-14, and the other was issued to W. M. Smith for a test on the M. F. Finley land in the northwest of the northeast of the southwest of section 12-17-14.

Much Drilling Activity Under Way in South Arkansas.

Special to the Gazette.

El Dorado, Jan. 4.—Drilling operations are well under way on one well in the Rainbow City field and two additional tests are being rigged up in the same area while a permit has been issued and work is expected to get under way soon on a 6,500-foot deep test in the Snow Hill area of Ouachita county, north of Smackover, to feature the week's oil activities of south Arkansas.

Cold weather delayed work on the Rath & Cartier test of W. B. Streett and associates in Ouachita county, southwest of Camden, but work was resumed this week and early completion of the well as a small producer is expected soon.

The Sullivant No. 3 well of Crosbie & Robinson is being drilled below 2,600 feet. The well was spudded in last week and is expected to near the producing sand around 3,150 feet, soon after the

first of next week. The well is located in the northeast corner of the southeast quarter of the northwest quarter of section 12-17-14.

It is the third to be drilled in the new deep production area on the eastern side of the Rainbow City field. The company has two wells producing in the same section, the No. 1 and No. 2

Sulliant tests. Both wells are producing about 400 barrels of 32 gravity oil daily. No. 1 well is on the pump and the No. 2 test is flowing through tubing.

Two Permits Issued.

Two permits were issued this week by the state Conservation Department here for new tests in section 12. G. W. James plans a test to be known as the M. J. Sullivant No. 1 in the northeast quarter of the northwest quarter of the southwest quarter of section 12-17-14. W. McKay Smith plans a test to be known as the M. F. Finley No. 1 in the northwest quarter of the northeast quarter of the southwest quarter of section 12-17-14.

Locations have been made for several additional tests in the same area. The Root Refining Company is planning to drill in the northeast corner of the southwest quarter of the southwest quarter of section 12-17-14, as an offset to the Sullivant No. 1 well. The same company is planning an offset test to the No. 2 Sullivant well, but location has not been made.

The Ohio Oil Company is clearing land for a location to be an offset to the Sullivant No. 2 on the Pumphrey land. The exact location has not been announced. The company has made location for an east offset to the No. 3 Sullivant well. The test will be the Furrow No. 4 and will be located in the northwest corner of the southwest quarter of the northeast quarter of section 12-17-14.

Deep Tests Planned.

Resuming the search for deep oil in south Arkansas, the Phillips Petroleum Company has obtained a permit for a 6,500-foot deep test well in the Snow Hill area of Ouachita county north of Smackover, in proved territory.

J. D. Reynolds, Camden operator, is interested in the test. The well will be known as the J. D. Reynolds No. 1 and is located in the southeast quarter of the northwest quarter of section 17-15-15. Operations are expected to get under way in the next few days. It is reported that Charles Murphy, local banker, and several other local men are interested.

The most recent deep test well in this area was the 8,000-foot test of the Gulf Refining Company, drilled about six months ago in the Griffin area near Smackover. The Gulf well was drilled below 8,000 feet, but was abandoned soon after the big salt dome was penetrated.

Several years ago the Lion Oil Refining Company drilled a deep test well in the Hayes City area of the Smackover field, but it was abandoned at about 7,200 feet, after drilling about 1,300 feet through the salt dome.

The only other deep test well drilled in this area was by H. L. Hunt in the Rainbow City field about six months ago. It was drilled to a depth of about 6,000 feet, and was abandoned in the redbeds and lime formations.

Operators are continuing efforts to complete the Rath & Cartier No. 1 of W. B. Streett and associates southwest of Camden in Ouachita county for a small producer. Plug was drilled before Christmas and balling started. Difficultly was encountered with a mud flow that clogged the oil sand. A sand pump was installed, but the work did not prove entirely successful and it was decided to drill through the cap rock below the point at which casing was set. Cold weather halted operations and when work was resumed it was found that there were more than 200 feet of free oil in the casing. The oil was bailed off and the well filled up again to about the same level. Operators are undecided whether to try for completion of a small pumper or drill through the cap rock.

The well is located in the southwest quarter of the northeast quarter of section 35-13-18 and was drilled to 1,401 feet.

Four Drilling Permits.

Four permits for new wells have been issued by the state Conservation Department this week, as follows:

Murdock, May & Easton, for a test on the Conway estate in the southwest corner of the northwest quarter of the southwest quarter of section 20-12-27, in Hempstead county.

W. F. Turner for two tests in Miller county. Both wells will be known as W. F. Turner No. 1, one in the southeast corner of the southwest quarter of the southeast quarter of section 8-20-27, and the other 1,115 feet south and 918 feet west of the northeast corner of section 17-20-27.

The Tri-State Oil Company, Inc., has a permit for a test to be known as the Beck No. 2 in the northeast corner of the southeast quarter of the southwest quarter of section 34-15-26, Miller county.

The Gulf Refining Company received a permit to plug and perforate on its Ralph Bennett No. 10 in the southeast corner of the southwest quarter of section 33-15-15 in Ouachita county.

Benedum & Trees Oil Company has abandoned its deep test well in Ouachita county near Troy. The well was the H. L. Bingham No. 1 and was located in the northeast corner of the northeast quarter of the southwest quarter of section 29-14-19. The well was drilled to a depth below 5,000 feet. Permit to abandon was issued this week.

1,000 - Barrel Producer Near El Dorado Expected.

Special to the Gazette.

El Dorado, Jan. 11.—A partially successful drill stem test on a well in the eastern part of the Rainbow field which indicated a producer of about 1,000 barrels of oil a day, featured the oil activities of South Arkansas this week though operators and others interested in the search for oil were waiting with interest the start of the 6,500-foot deep test to be drilled in the Smackover area by the Phillips Petroleum Company.

Also of interest to the oil fraternity is the increased prices posted this week by several of the major purchasing companies for Arkansas crude. The price increase was announced as effective Thursday morning, and is an increase of 10 to 15 cents a barrel. The new price first was posted by the Texas Company and other major companies were expected to follow suit.

The increased price for crude is expected to add from \$3,000 to \$4,500 a day to the value of the approximately 30,000 barrels daily production in south Arkansas.

The drill stem test this week was made on the Sullivant No. 3 well of Crosbie & Robinson in the new deep sand area of the Rainbow City field. The well is located in the northeast corner of the southeast quarter of the northwest quarter of section 12-17-14 and is the third well drilled by the

Tulsa (Okla.) interests to the new sand. The showing was obtained in a drill stem test Thursday and though the test was not entirely successful, the seat giving way a short time after the testing tool was placed, the well showed considerable oil and gas.

The test lasted only about a minute, and it was difficult to estimate the possible production, but it was believed another good producer will result. Oil men who witnessed the test estimated that the well would be equally as good a producer as the Sullivant No. 2 which was completed for a 1,000-barrel producer.

Decision was made to set casing and final testing of the well is expected to be made in about a week or 10 days.

The No. 3 well was completed from the same sands as the other two wells at a depth of about 3,170 to 3,175 feet.

The two other wells of Crosbie & Robinson are producing about 400 to 500 barrels of oil a day.

Other Tests Under Way.

Two other tests in the vicinity of the Sullivant wells are well under way and other tests are expected to get under way soon.

W. McKay Smith is drilling below 1,400 feet on his M. F. Finley No. 1, in the northwest quarter of the northeast quarter of the southwest quarter of section 12-17-14. The test is an offset to the Sullivant No. 2. George W. James is drilling below 400 feet on his M. J. Sullivant No. 1 in the northeast quarter of the northwest quarter of the southwest quarter of section 12-17-14, a south offset to the Sullivant No. 1 well.

Completion of the Sullivant No. 3 well for a producer would extend production from the fifth producing sand in the Rainbow field to the east.

Derrick materials have been moved to the location for the deep test of the Phillips Petroleum Company on the J. D. Reynolds land in Ouachita county near Snow Hill in the Smackover field.

The well will be drilled to a depth of 6,500 feet. The well is in proven area in shallow sands but will be the first deep test in that particular section of the Smackover field and will be the first 6,000-foot test in Ouachita county.

The location of the well in the southeast quarter of the northwest quarter of section 27-15-15 is only about a mile from the old Richardson No. 1 well of the V. K. F. Drilling Company, discovery well in the Smackover field. The old test has produced more than a million barrels of oil since it was completed more than 13 years ago.

Since the discovery of deep oil in the Rodessa field north of Shreveport, La., Fafayette, Miller and Columbia counties and the western part of Union county have been leased and are subjected to an intensive geophysical survey preliminary to exploratory drilling which is expected to result in considerable drilling in that area during the year.

Considerable lease play is developing in eastern Union, southeastern Ouachita, Calhoun, Bradley and western Ashley counties along the Ouachita river, giving rise to belief that there will be considerable activity in that section during the year.

Drilling activities in South Arkansas as a whole have shown considerable pick-up in the last several months, and many blocks of acreage have been assembled that carry drilling obligations during the next few months.

Field 15 Years Old.

Friday, January 10, was the 15th anniversary of the completion of the discovery well in South Arkansas, the Busby No. 1 in the El Dorado south field. Completion of the test as one of the largest gushers of the boom ushered in a drilling campaign that caused thousands of wells to be drilled and millions of barrels of oil to be produced in Union and Ouachita counties.

It has been estimated that more than 350,000,000 barrels of oil has been produced in South Arkansas since 1921, with hundreds of wells still producing. Production now is about 30,000 barrels a day with increases being made with new producers in the Rainbow City field. Production in Arkansas in 1935 was 10,971,000 barrels as compared with 11,139,000 barrels in 1934.

A permit was issued this week for a wildcat test in Ouachita county, and announcement was made of another test to be drilled by J. D. Reynolds of Camden, also in Ouachita county. It was reported that El Dorado oil interests will drill three wildcat tests east of El Dorado, near the city limits.

The new permit was issued to the Ouachita Drilling Company for a wildcat test in the southeast quarter of the southwest quarter of section 19-15-11, about a mile north of proven area the Smackover field.

Reynolds' location was announced as in the northeast corner of the southeast quarter of the southwest quarter of section 36-15-16 on the McKenzie land. The well is in proven area.

Murdock, May & Easton have set surface casing in a wildcat test on the Conway estate in the southwest corner of the northwest quarter of the southwest quarter of section 20-12-27 in Hempstead county.

Operators are continuing efforts to complete the Rath & Cartier No. 1 of

W. B. Streett and associates in the southwest quarter of the northeast quarter of section 35-13-18 in Ouachita county, southwest of Camden, for a producer. A good showing of oil has been obtained at 1,400 feet, but difficulties have been encountered that have prevented its completion.



Arkansas Factories Manufacture Products That Compete In World-Wide Markets

Do you use them—insist on having them? When you buy Arkansas-manufactured products, you help yourself as well as the state. More people at work—more money at home—more prosperity.

Operations Of Lion Oil Co.

Impressive

By M. O. TAYLOR.

(Gazette Manufacturers Page Director.)
A trip through the Lion Oil Refining Company's properties located at El Dorado, is both interesting and educational, especially to any one who lives in Arkansas.

It is hard to realize just what this great producer of petroleum products means to the state, representing as it does an investment of approximately \$8,000,000 in Arkansas alone and giving employment to hundreds in Arkansas and many other states. The personnel of the Lion organization is well adapted to such an enterprise. From the highest in command to the lowest employe, they are highly trained in the oil business.

The writer had the pleasure of making a personal trip through this great refinery and will try to pass on to Gazette readers just what he saw and had explained to him.

I was much impressed with the size of the organization and how smoothly it operated. There are hundreds of trained, skilled men and women carrying on important work without confusion or lost motion. I had the pleasure of meeting the executives of both Lion Oil Refining Company and Lion Oil Sales Company and many of the department heads in the offices, at the refinery and in the fields, and I was struck with the similarity to any army organization. All departments are closely correlated and co-ordinated. There was a spirit of helpful co-operation evidenced by the willingness and eagerness of all the employes with whom I came in contact.

Big Supply Department.

I observed with interest the workings of the huge supply department. This department controls the warehousing of equipment for the oil fields in Arkansas and Texas, the supplies for the pipeline department and the refinery and shipping departments. They handle daily miles of pipe, casing, rods for pumping and thousands of steel drums which contain asphalt, oil and other petroleum by-products. Each unit is numbered and an accurate inventory is maintained at all times.

I was also impressed with the activities of the purchasing departments of Lion Oil Refining Company and Lion Oil Sales Company. These divisions are under the management of R. E. Meinert and J. F. Hansard, respectively. Mr. Meinert buys supplies for the refinery and all of its operations in production, pipelines and refinery. Mr. Hansard's department purchases for the Lion Oil Sales Company, handling supplies for over 500 bulk plants, service stations

and dealers. His department also maintains an inventory on all the physical property of Lion Oil Sales Company in Arkansas, Alabama, Mississippi and Tennessee. Under the direction of the purchasing and supply departments of both companies, there is a corps of painters whose duty it is to see that all service stations, bulk plants, storage tanks, warehouses, derricks and piping are painted and preserved from the ravages of the elements.

After my visit to the general offices we took one of the company cars with an able guide and started for the Lion holdings in the famous Smackover oil fields, located about 10 miles from El Dorado. En route, we were shown the new radio broadcasting station, another Barton enterprise, recently installed in El Dorado and here we saw a most complete studio, which cannot fail to prove a great asset to El Dorado and surrounding territory.

After leaving the broadcasting station, we drove to the oil fields, and entering the Smackover field found ourselves in the midst of hundreds of oil derricks, hard by the old "Crater," which caused quite a lot of excitement during the first oil boom days. It is some 40 feet deep, 700 to 800 feet wide,

and still hold a pool of oil and water several feet deep. It was stated that this crater was accidentally fired during the oil boom days in 1924 and burned for several months, gradually burning itself out. While the fire was raging at its height the glare could be seen for 50 miles.

Seven Fields in District.

In the El Dorado district, there are seven fields, each producing a different grade of crude. They are namely: El Dorado, East El Dorado, Lisbon, Smackover, Louann, Rainbow and Urbana. Each of these fields still produces at a satisfactory rate, according to Lion officials. However, crude from the Smackover field is most valuable.

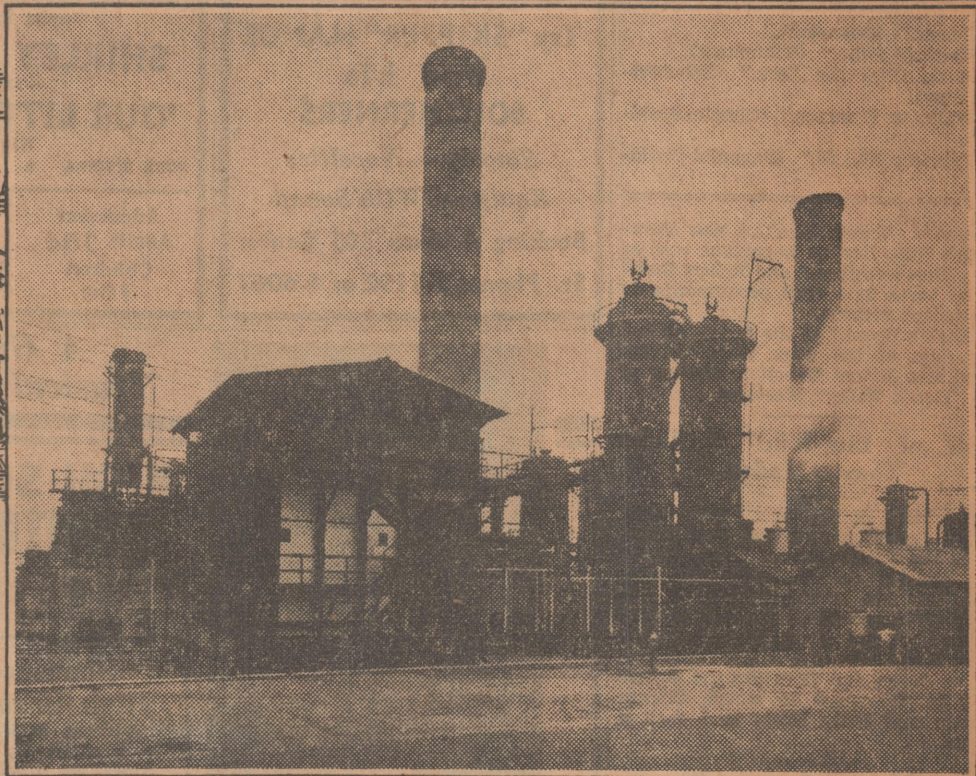
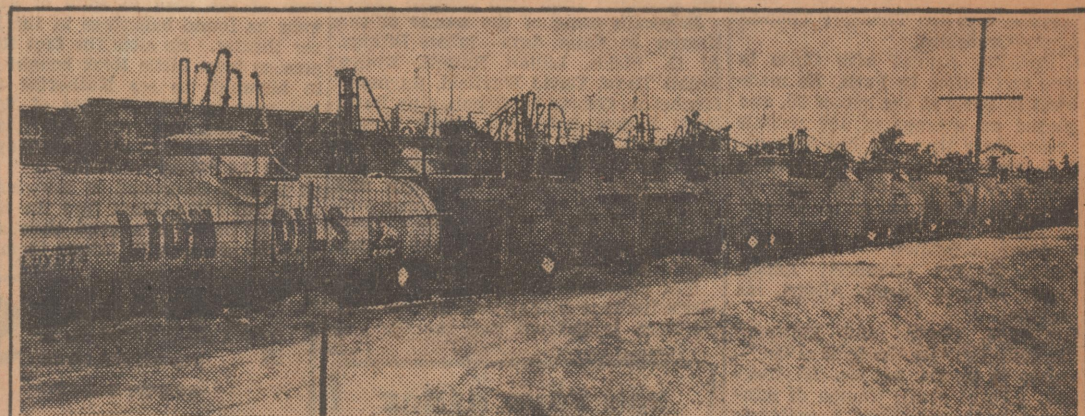
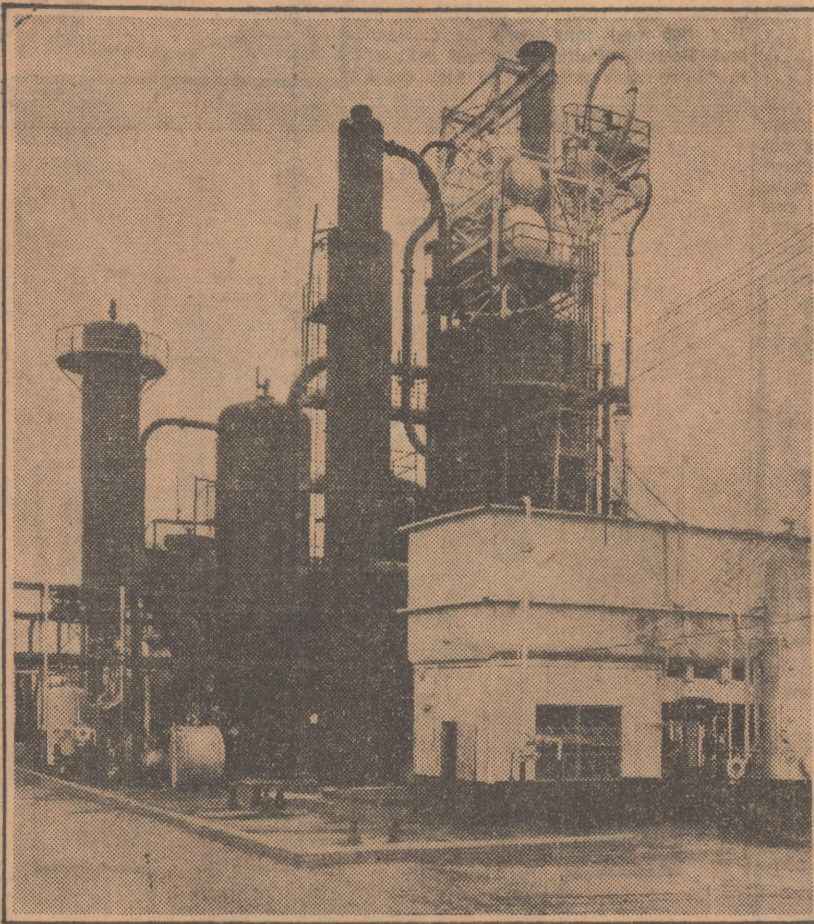
Lion has in the Smackover field alone 134 producing wells which produce over 2,000 barrels of crude daily. They have recently brought in two new good wells which will average 50 barrels each daily. The average daily production of each well in the entire field according to one of Lion's production men is approximately 50 barrels daily and the average depth of the wells is from 2,000 to 2,400 feet. The production of each well depends upon the sand from which the oil comes. In the Smackover field alone there are five sands: The Nacatoch, Meakin, Graves, Blossom and Woodbine, ranging in depth from 2,000 to 2,700 feet below the surface.

The crude oil from the Smackover field is considered the best in the United States for making gasoline and asphalt. It is of low gravity and pro-

duces gasoline with an extraordinary high natural octane rating. The asphalt manufactured from this crude can not be equaled by that manufactured from any other domestic crude oil.

There are no gusher wells in the El Dorado district, all being pumping wells using natural gas to operate them. As the oil is taken from the ground by pumps, there is a vast amount of water mixed with the oil. The crude oil is pumped into huge tanks where the water is separated from the oil by gravity and piped off from the bottom. The crude has to be free from water and sediment before it is put into the pipe line and pumped to the refinery in El Dorado eight miles away. After the

TURNING OUT LION OIL COMPANY'S PRODUCTS



Upper left—Lion's modern vacuum still; upper right—loading rack where tank cars are filled with Lion Knix-Knox gasoline and Lion asphaltic products; lower left—car loading platform for Lion asphalt roof coating, Lion roofing asphalt and Lion insect spray; lower right—one of Lion's fractionating stills.

raw crude oil reaches the refinery it at once goes through several processes and one can follow its progress until it is transformed into the various petroleum products. The refinery of the Lion Oil is one of the most modern in the country and turns out 26 different petroleum products.

Trip to Refinery.

A trip through the refinery is one never to be forgotten, though of course it takes an oil man to really under-

stand just how gasoline and all the other petroleum products are made. The writer has often wondered just how Lion Knix-Knox gasoline is made and since the visit through the refinery he has a pretty good idea and can better appreciate these widely known products.

Lion owns 400 rail cars and operates over 500. The individual rail ship-

(Continued)

(Continued from Page 12.)

Arkansas and the second largest in the entire Missouri Pacific system.

Lion is one of the largest asphalt marketers in the country, supplying a number of the states with asphalt for road building, and out of this refinery there is shipped a solid train load of this and other petroleum products daily to all parts of the country.

After the finished products are ready for market, they are shipped into 29 states of the Union and Canada, where Lion Knix-Knox gasoline is sold at a premium. A vast quantity of Lion products remain in the South and are distributed to Lion bulk plants, service stations and dealers throughout Arkansas, Alabama, Mississippi and Tennessee. In conclusion let me say that Lion Oil plays a big part in aiding both directly and indirectly the general welfare of Arkansas, and let me insist that if the opportunity presents itself, the reader should be sure and make the trip through this great refinery of the Lion Oil Refining Company.

The company's general offices are located in El Dorado, occupying two entire floors of the Exchange building.

Casing Being Set in Two Tests Near El Dorado.

Special to the Gazette.

El Dorado, Jan. 30.—A good showing was obtained today in another well that encountered the new Rainbow City sand. Crosbie & Robinson cored the formation in the Sullivant No. 4 well in Section 12-17-14, and due to the good showing decided to set casing without making a drill stem test.

The No. 4 well is in the southeast corner of the northeast quarter of the northwest quarter of section 12-17-14. It is a west offset to the Furlow No. 3 of the Ohio Oil Company, in which casing has been set after the well had been deepened to the fifth producing sand in that area.

Casing will be set in the Crosbie well tomorrow and final test is scheduled for early next week.

The Ohio is expected to start testing tomorrow or Saturday on the Furlow No. 3. Casing was set in this well also without a drill stem test because of the good cores obtained.

George W. James is coring around 3,300 feet in the well to the south of the Crosbie producers, and the Ohio is rigging up for the Pumphrey No. 6 in section 12-17-14.

Small Drilling Spurt Likely At Rainbow Completion of Two Good Wells Past Week Is Incentive.

El Dorado—New tests in the Rainbow City fields to the northeast of El Dorado are expected to follow the completion this week of two more producing wells from the fifth pay sand for that area.

Although neither of the two producers is rated as a big well, field followers were pleased with the showing, and drilling of offsets is likely. One of the producers was the Furlow No. 3 of the Ohio Oil Company, in section 12-17-14. It started flowing at the rate of 600 barrels a day but has been placed on the pump and is making several hundred barrels daily.

The second producer was the Sullivant No. 4 of Crosbie & Robinson, in Section 12-17-14. This well is good for about 200 barrels. It also has been placed on the pump.

As yet the operators have not announced plans for additional tests, but since four producers have been brought in on the tract, other drilling is anticipated.

The Ohio is drilling one other well at this time, Pumphrey No. 6, in Section 12-17-14, and is expected to begin work on another in a short time. Considerable attention is being given to the deep test of the Phillips Petroleum Company, near Snow Hill, in Ouachita county, Smackover field. The well is in the southeast corner of the northeast quarter of the northwest quarter of Section 27-15-15. It is on land obtained from Reynolds and Berg of Camden. Depth of the well now is 1,270 feet, the hole having been plugged back from a depth of around 1,600 feet. The plugging back became necessary when it was found that the hole was slightly off perpendicular. The well was cemented back to a depth of 1,217 and is being reamed out. It is expected that it will be drilled to at least 6,500 feet. It is the first all-electric test to be drilled in Arkansas. Machinery is operated entirely by electricity.

Several other wildcats and deep tests are understood to be in the making. One is a deep test that is planned to the northeast of El Dorado.

New Producer Expected In Rainbow City Field.

Special to the Gazette.

El Dorado, Feb. 19.—Completion of another producer in the Rainbow City field is expected next week following the setting of casing today in the Pumphrey No. 5 well of the Ohio Oil Company in Section 12-17-14. Casing was set at a depth of 3,150 feet following a good showing of oil in a core taken last night.

The Pumphrey well is located in the northeast quarter of the northwest quarter of Section 12-17-14. It is an old well that was deepened from the Crain sand at 3,000 feet.

Efforts to make a drill stem test at about 2,800 feet in the Reynolds deep test of the Phillips Petroleum Company in the Snow Hill area of the Smackover field have been unsuccessful. Operators will continue drilling.

Operators plan to test all formations encountered in the deep test, which is contracted for a depth of 6,500 feet but is expected to go about 8,000 feet deep.

New Ruling Passed on Pulling Casing From Abandoned Wells.

Special to the Gazette.

El Dorado, Feb. 14.—A new regulation has been issued by the state Board of Conservation whereby surface casing may be pulled from abandoned wells by bonded casing pullers provided written permission has been obtained from the lease owner where the lease still is in effect and from the landowner where the lease has expired.

One joint of pipe must be left in the hole and a plug driven about five feet in the casing and cement poured on top of the plug. The top of the hole and at the surface must also be filled with cement.

New Well Extends Rodessa (La.) Field to Northeast.

El Dorado, Ark., Feb. 25 (AP).—T. M. Martin, vice president of the Lion Oil Refining Company, announced completion today of the company's well in the NW, SE of section 9-23-15, extending the Rodessa (Louisiana) field one and a half miles to the northeast.

The well is the Wynn No. 1 and was brought in making gas and distillate. The flow was estimated at 350 barrels of distillate a day, 67 gravity, and from 15 to 20 million cubic feet of gas. Pressure on the casing is 2,000 pounds with a tubing pressure of 1,750 pounds, said by Martin to be unusual for that field.

Martin said the well cleaned itself early this afternoon and is flowing through a 5-16 inch tubing choke. It was completed from the Hill Gloyd and Deas sands at a depth of 6,112 feet. Bottom of the hole is 6,157 feet but the well was plugged back several days ago.

The Lion producer, located on a 200-acre tract, is the first to be completed by that company at Rodessa.

Rainbow Well Ready to Case

Indications Good for Two More Producers Near El Dorado.

El Dorado—One more well is down to the sand and another is coring for the same formation in the Rainbow City field.

An excellent showing has been obtained in the Furlow No. 6 of the Ohio Oil Company, in section 12-17-14. The showing was so good that officials of the company are reported to be making plans to set casing without waiting to make a drill stem test.

Location also has been made by the Ohio for the Pumphrey No. 4 in the southeast quarter of section 12-17-14.

George W. James and associates are coring for the sand in the Vessor No. 2, in section 12-17-14. This well is reported to be checking higher than the other test drilled recently on the same tract.

Drilling continues on the Snow Hill deep test of the Phillips Petroleum Company. The well is now down below 2,900 feet. In the drill stem test made recently at a depth of 2,784 feet, the well showed only a small amount of gas. Contract depth on the well is 6,500 feet, but it is believed likely that the well may be drilled deeper.

Completion in Rainbow City Field Features Week.

Special to the Gazette.

El Dorado, Feb. 29.—Oil activities of south Arkansas this week were featured by completion of one new producer in the Rainbow City area and the increase in production of a recently completed well in the same area.

Two other new tests in the same area are being watched by the oil fraternity as they near the new production level.

The deep test wells of the Phillips Petroleum Company in the Snow Hill area of the Smackover field is drilling below 3,000 feet following a test of a "salt and pepper" sand encountered around 2,800 feet.

The latest completion in the Rainbow City area is the Richard Pumphrey No. 5 of the Ohio Oil Company in section 12-17-14 which was completed

early this week for a producer of 750 barrels a day.

The new sand was encountered around 3,175 feet last week and casing set after a core was taken of the sand that made such a good showing that the customary drill stem test was not deemed necessary.

The plug was drilled early this week and the well started flowing a short time after swabbing operations were started.

The new producer is an old well that had been a producer from the Crain sand at 3,000 feet, and was deepened to the new producing level. The well is located 660 feet south and 660 feet west of the northeast corner of the northwest quarter of section 12-17-14.

Production Increased.

The recently completed producer that has increased its production is the Sullivant No. 4 well of Crosbie & Robinson which was completed two weeks ago and placed on the pump. The well was pumping about 100 barrels of oil per day and suddenly Monday night the well broke loose and started flowing at a rate that was gauged at 1,000 barrels per day.

The well was completed at a depth of only about a foot in the new sand. Operators explained that the increased production probably was due to the well deepening itself in the sand and the increased gas pressure caused it to start flowing. The new production is about 1,000 barrels of oil a day. The well is located in the southeast corner of the northeast quarter of the northwest quarter of section 12-17-14.

Crosbie & Robinson have three other producing wells in the same area that are producing about 700 barrels a day.

The Ohio company is nearing production level in its Pumphrey No. 6 well, an offset to the Sullivant No. 2 producer of Crosbie & Robinson. The new test is located in the southeast quarter of the northwest quarter of section 12-17-14.

The well is down 2,270 feet and is expected to reach the sand early next week.

Well Nears Completion.

Another well in the same area nearing production is the M. J. Vessor No. 2 of George W. James and associates of El Dorado. The well is at a depth of 2,740 feet and should reach the sand in a few days.

The James well is located in the northwest corner of the northwest quarter of the southwest quarter of section 12-17-14, and is near another test drilled several weeks ago by the James interests. The first well was abandoned as a dry hole below 3,200 feet when it failed to strike the sand.

Crosbie & Robinson are expected to start operations soon on the Sullivant No. 5 which is to be an off-set to their Sullivant No. 4. The new test is expected to be located in the southeast quarter of the northeast quarter of the northwest quarter of section 12-17-14.

Drilling operations have been resumed on the J. D. Reynolds No. 1 deep test well of the Phillips Petroleum Company in the Snow Hill area of the Smackover field, following a drill stem test last week.

A core of a "salt and pepper" sand was taken last week at around 2,786 feet and a drill stem test was made as a part of the program of testing of all formations encountered. Reports received here were that the test showed salt water and a little oil.

Operators then resumed drilling. The well is now below 3,000 feet. Plans of operators are to test all formations encountered as the test is drilled deeper.

The test is scheduled for 6,500 feet, but indications are that it may be drilled below 8,000 feet to become the deepest test yet drilled in Arkansas. The well is operated entirely with electricity.

Ouachita County Test.

Southwest of Camden in Ouachita county, J. D. Reynolds and the Lion Boiler Works of Smackover are reported to have encountered a second sand in the Rath & Cartier No. 1 well below 1,400 feet, and the test has been shut down temporarily.

The test is located in the southwest quarter of the northeast quarter of section 35-13-18. It was drilled to a depth

of 1,410 feet by W. B. Streett and associates and an oil sand encountered. However, they were unable to complete the well for a producer because of a mud flow which clogged the sand. The new operators are deepening the hole.

In Dallas county, Kelly & McCall are reported to have started operations on the Ray Owens No. 2 test in the southeast quarter of the northeast quarter of section 26-10-16. The test is the second to be drilled on the Owens land and is near a previous test drilled to the Nacatosh sand, where a showing of oil was said to have been made, but operators were unable to complete the well.

To Drill Wildcat.

J. C. Buckbeer has obtained a permit for a wildcat test east of El Dorado on the Ezell land. The test is the Harry Ezell No. 1 and is located in the southwest corner of the northeast quarter of the northwest quarter of section 13-17-15.

The Seaboard Oil Company of Dallas, Tex., is reported to be drilling below surface casing in its Fee No. 2 well in the northwest quarter of the northeast quarter of section 28-17-4 in the same section as a previous test of the same company which was abandoned as a junked hole at 2,494 feet. Another test was made by the company in section 34-17-4, but was abandoned at 2,465 feet when rock was encountered.

A fishing job is reported to have delayed testing of the Bodcaw Lumber Company No. 3 of Erwin & Leach in Lafayette county, near Stamps. The test is to be made in a lime formation showing oil saturation at 3,149 feet. The well is located in the northwest corner of section 20-16-23.

Reports have been received here that Charles F. Addy and associates are assembling a block of acreage northeast of Strong, centering around section 22-18-12, with agreement to drill a 6,000-foot test.

New Permits Issued.

Two permits to plug and perforate old tests and eight permits to plug and abandon tests were issued this week by the state Conservation Department.

Permits to plug and perforate were as follows: Standard Oil Company of Louisiana, Sid Umsted No. 21, 330 feet east of the northwest corner of the southeast quarter of the southeast quarter of section 33-15-15 in Ouachita county; Standard Oil Company of Louisiana, Sid Umsted "B" No. 6, 210 feet north and east of the southwest corner of the southeast quarter of the northwest quarter of section 32-15-15 in Ouachita county.

Seven of the eight permits to plug and abandon tests were issued to the Imperial Oil and Gas Company for abandoned tests in Crawford county. They were as follows: Ruthey Grant No. 1, in the southeast quarter of the northwest quarter of section 28-9-30; L. H. Kibler No. 1 in the southwest quarter of the northeast quarter of section 30-9-30; T. J. Trout No. 1 in the northeast quarter of the northeast quarter of section 30-9-30; S. W. Bushmainer No. 2 in the east half of the southwest quarter of section 7-8-30; John Brown No. 4 in the northwest quarter of the southwest quarter of section 3-8-30; John B. Brown No. 12 in the southwest quarter of the northwest quarter of section 33-9-30; Crawford County Bank No. 4, in the northwest quarter of the southeast quarter of section 5-8-30. The other permit to plug and abandon was issued to J. C. Buckbee, trustee, for the Sloan No. 2 well, 330 feet south and east of the northwest corner of the southeast quarter of the northwest quarter of section 14-17-15 in Union county.

Completion of the Pumphrey well of the Ohio company as a producer makes a total of seven wells that are producing from the new Sullivant sand which is the fifth producing sand of the field.

Total production of the seven wells is 2,615 barrels daily. Four of the producers are owned by Crosbie & Robinson with a production of 1,300 barrels a day. Three are owned by the Ohio company with production of 1,315 barrels. With exception of the newest producer all of the wells are producing about 300 barrels a day each.

In an eight-minute test the well made a gas flow estimated at from 10,000,000 to 15,000,000 cubic feet daily and also a considerable showing of oil.

Following the test, operators made plans to set casing for final testing. If the new sand proves productive it will be the sixth sand in the area from which production has been obtained.

The sand is about 80 feet below the Sullivant sand. The formation does not check with any other sands in the territory and field. Oil men are optimistic over chances of completing a producer.

The well is in the northwest quarter of the southwest quarter of section 12-17-14. It is in the same vicinity as the Vessor No. 1 well drilled several weeks ago by James and associates and abandoned as a dry hole slightly below 3,200 feet. If a good producer is obtained in the new well it is probable that the other test will be reopened and drilled to the new producing level.

Completion of the Pumphrey well of the Ohio company as a producer makes a total of seven wells that are producing from the new Sullivant sand which is the fifth producing sand of the field. Total production of the seven wells is 2,615 barrels daily. Four of the producers are owned by Crosbie & Robinson with a production of 1,300 barrels a day. Three are owned by the Ohio company with production of 1,315 barrels. With exception of the newest producer all of the wells are producing about 300 barrels a day each.

New Tests Planned.

Derrick is being constructed for another test in the area by the Ohio company. The new well will be the Riley Furlow No. 4, 1,056 feet north and 265 feet east of the center of section 12-17-14. Drilling operations on the new test are expected to get under way in a few days.

A new test is being planned by the Crosbie & Robinson interests, and operations are expected to be started soon.

The well will be the Sullivant No. 5, and will be in the southeast quarter of the northeast quarter of the northwest quarter of section 12-17-14.

Derrick has been erected and operations are expected to get under way soon on a 6,000-foot deep test to be drilled several miles northeast of El Dorado.

The new deep test is the Harry Ezell No. 1 of J. C. Buckbee and associates. The test is 330 feet north and east of the southwest corner of the northeast quarter of the northwest quarter of section 13-17-15. The test is near several shallow wells drilled in the last several years but is the first well to be drilled below 5,000 feet.

Derrick has been erected on a proposed 6,500-foot deep test to be drilled in Calhoun county northeast of Calion. The well is in section 36-15-14, and is about four miles directly east of the mouth of Smackover creek. The well is on land owned by the Freeman Smith Lumber Company.

Deep Well Contracted.

Operators are drilling ahead on the J. D. Reynolds No. 1 deep test well of the Phillips Petroleum Company in section 35-13-18, in the Snow Hill area of the Smackover field, Ouachita county. The well is reported to be below 3,100 feet.

The test is contracted for a depth of 6,500 feet, but indications are that unless oil in paying quantities is encountered at a lesser depth, the test will be taken to 8,000 feet or deeper.

Another deep test in south Arkansas was indicated this week when drilling operations were resumed on the Bodcaw Lumber Company No. 3 of Erwin & Leach and associates in section 20-16-23, Lafayette county, near Stamps, after an unsuccessful test of oolitic lime showing zone oil saturation from 3,460 to 3,490 feet. The test is reported to be planned as an 8,000 foot test.

In Miller county, south of the Garland City pool, Andrew Erwin and associates are reported to have completed acreage for a wildcat test. The acreage is said to center in section 2-17-26 where the Humble Oil and Refining Company abandoned its Red River Lumber Company No. 1 at 1,675 feet.

One new permit to drill and two to plug and abandon and one to plug and perforate were issued this week by the state Conservation Department.

The new permit to drill was issued to J. C. Buckbee, trustee, for the Harry Ezell No. 1, 330 feet north and east of the southwest corner of the northeast quarter of the northwest quarter of section 13-17-15 in Union county.

Permits to plug and abandon were issued to the Magnolia Petroleum Company for the John Goodwin No. 7 in lot two in the northwest quarter of the northwest quarter of section 5-16-15 in Ouachita county and to the Magnolia Petroleum Company for the Ed Wilson No. 7 in the north half of the northeast quarter of the northwest quarter of section 17-16-15 in Union county.

The permit to plug and perforate was issued to the Gulf Refining Company for the Ralph Bennett No. 7, 1,520 feet east and 1,120 feet north of the southwest corner of section 33-15-15 in Ouachita county.

The two completions in Arkansas follow:

Miller County (Garland City)—M. H. S. Oil Company, No. 1 H. Beck, Section 34-15-26, 100 barrels at 2,902 feet.

Union County—I. J. Allen et al.; No. 1 Union Sawmill Co., Section 8-17-12, dry, abandoned at 3,293 feet.

Daily average oil production in the Rodessa field, Caddo parish, light oil, producing area rose 8,178 barrels to 34,002 barrels, to give north Louisiana, a gain of 8,913 barrels, and send production in this area to 55,456 barrels, setting another new high mark for the last decade.

Arkansas's average continued on an even keel, dropping 13 barrels to 29,22 barrels. Daily average production last week by districts in Arkansas follows: El Dorado, 1,543 barrels, down 14 barrels; Calion light, 2,930 barrels, down 20 barrels; Calion heavy, 2,915 barrels, down 27 barrels; Smackover light, 2,165 barrels, up 19 barrels; Smackover heavy, 17,227 barrels, down 60 barrels; Iisbon, 268 barrels, down eight barrels; Nevada county, 800 barrels, up 17 barrels; Stephens, 577 barrels, unchanged; Miller county, 1,350 barrels, up 80 barrels, and Camden, 45 barrels, unchanged.

Deep Test Wells Watched In South Arkansas.

Special to the Gazette.

El Dorado, March 14.—Deep test wells in several sections of South Arkansas featured oil activities in this area this week. There was little other drilling activity, and for the first time in several weeks there were no completions in the new deep production area of the Rainbow City field east of El Dorado.

One test in the Rainbow City field is drilling below surface casing, permit has been issued for deepening of an old producer to the new sand, and casing has been set in another well drilled to what may prove to be the sixth producing sand.

Three deep test wells, two of which may be drilled to 8,000 feet, are under way in south Arkansas and another deep test well is being drilled southwest of Junction City, across the line in Louisiana.

Reynolds Test Watched.

Of chief interest to south Arkansas operators is the J. D. Reynolds No. 1 deep test of the Phillips Petroleum Company in the Snow Hill area of the Smackover field in Ouachita county, which is drilling below 3,700 feet.

Operators are checking all formations as the well is deepened, and it is reported that two geologists are watching the well day and night.

Contract for the well is 6,500 feet, but reports indicate that the test will be taken to a depth of 8,000 feet unless oil in paying quantities is encountered at a lesser depth.

The well is located in section 35-13-18, only a few miles north of a deep well drilled five years ago by the Lion Oil Refining Company to a depth of below 7,200 feet and abandoned in rock salt. Reports are that the Phillips well will be drilled through the salt.

Lafayette County Test.

Another deep test in south Arkansas that is attracting attention because of its location, north of the Rodessa field in Louisiana, is the Bodcaw Lumber Company No. 3 of Erwin & Leach in Lafayette county, near Stamps.

Drilling operations have been resumed on the well after an unsuccessful test of a lime formation showing oil at a depth of 3,460 to 3,490 feet. The test is reported to be planned for 8,000 feet. The well is located in section 20-16-23.

Deep Well In New Area.

Another deep test well is being drilled in Union county by J. C. Buckbee and associates northeast of El Dorado. The well is the Harry Ezzell No. 1 and is 330 feet north and east of the southwest corner of the northeast quarter of the northwest quarter of section 13-17-15. The test is near several shallow wells drilled in the past several years, but is the first deep test in that area.

Surface casing has been set and operators are drilling below 500 feet. It is reported that the well will be taken to a depth of 6,000 feet.

Calhoun County.

Derrick is up and operators are reported ready to spud in on a proposed 6,500-foot test in Calhoun county, northeast of Calion. The well is in section 36-15-14 and is about four miles directly east of the mouth of Smackover creek. The well is on land owned by the Freeman Smith Lumber Company.

Development of a sixth producing sand in the Rainbow City field depends on outcome of final testing of the M. J. Vessor No. 2 well of George W. James and associates of El Dorado. Drill stem test of the new sand encountered at 3,257 feet was made last week with a good showing of oil at a rate of about 10,000,000 to 15,000,000 feet daily gas production shown.

The plug is expected to be drilled in a few days. If a producer is obtained it will be from the sixth producing sand. The new sand is 80 feet below the Sullivant sand at 3,170 to 3,175 feet. The Vessor test is in the northwest quarter of the southwest quarter of section 12-17-14. It is in the same vicinity as the Vessor No. 1 of the same interests which was abandoned as a dry hole several weeks ago below 3,200 feet. If a good producer is obtained in the new well, it is probable that the first test will be deepened to the new sand.

Operators are drilling below surface casing in the Furlow No. 4 well of the Ohio Oil Company, 1,056 feet north and 265 feet east of the center of section 12-17-14.

Another Test Planned.

The same operators have obtained permit for another test in the same area. It will be the deepening of an old producer in the Crain sand. The well is the Richard Pumphrey No. 4, in the northeast corner of the northwest quarter of section 12-17-14.

The Root Refining Company has obtained permit to drill a new well. It

New Oil Test to Be Drilled In Urbana Field.

Special to the Gazette.

El Dorado, March 18.—Oil interest in the Urbana field was renewed today with announcement by the Marine Oil Company that another well will be drilled in that area. The new well will be the Thompson A-9 and is the first of several wells expected to be drilled in the area.

Location is in the northwest corner of the southwest quarter of the northeast quarter of section 10-18-13. Permit for the test was issued today by the State Conservation Board.

The Marine Company has several producing wells in the Urbana area and has been largely responsible for development of the Urbana field, which has been one of the most prolific in south Arkansas.

The Root Refining Company has set casing for final testing of the Nacatosh sand at 2,228 feet in its well in section 26-17-15, southeast of El Dorado. A good gas showing was obtained in a drill stem test yesterday.

Unconfirmed reports have been received here that acreage is being blocked for two or more outside wells north and northeast of the new deep production area in the Rainbow City field east of El Dorado.

Numerous Deep Tests Started Success in Rodessa Seems to Influence Arkansas Operators.

El Dorado.—Although main attention has been given this week to new developments in the Rainbow field, where one producer was completed and a new sand encountered, much interest centers in deep tests in widely scattered sections of the El Dorado oil territory.

The deep test that is causing considerable excitement is one being drilled by John Houseman and associates in section 10-23-4, two and one-half miles southwest of Junction City in Louisiana. The well is in the southeast 1-4 of the section, is slightly below 3,100 feet and reports are that it is checking high with formations encountered in other wells. This is taken as an indication that there is possibility of hitting the Rodessa sand and before the 4,500-foot depth is reached. Considerable lease activity is reported.

The well is almost due south of the Coats well, near the Arkansas-Louisiana line, which had a good showing several years ago.

On the Phillips Petroleum Company deep test, in section 27-15-15, Snow Hill area, Smackover field, the crew is drilling at 3,400 feet.

The third deep test of interest is the well to be drilled by J. C. Buckbee, trustee on the Harry Ezzell land, in the northwest 1-4 of section 12-17-15, northeast of El Dorado. This well will be drilled to 6,000 feet.

A well in which casing is being set is the Vessor No. 2 of George W. James and associates in section 12-17-14, in which a new sand was encountered at 3,257 feet. If a producer is obtained it will be the sixth producing formation in that area.

A new test is the Furlow No. 4 of the Ohio Oil Company, in section 12-17-14. The Ohio completed the Pumphrey No. 6 this week, good for 1,200 barrels daily.

Two Wells at Testing Stage Marine Company Starts New Activity in the Urbana Field.

El Dorado.—One well is testing, and testing of another is scheduled to start Sunday or Monday in El Dorado territory. The well, now in the testing stage, is that of the Root Petroleum Company, in section 36-17-15, southeast of El Dorado. Bailing was in progress late Saturday night after the crew had been engaged in that operation most of the afternoon. Testing of the well is in the Nacatosh sand around 2,228 feet.

The well to start testing, probably Sunday, is the Furlow No. 4 of the Ohio Oil Company, in section 12-17-14, Rainbow City field. Casing was set in this well about the middle of the week, following taking of good cores. The Ohio also is preparing to deepen the Pumphrey No. 4 in section 12-17-14.

There were indications this week of new activity in the Urbana field, southeast of El Dorado after announcement of a new test to be started by the Marine Oil Company. This well will be the Thompson A-9, in section 10-18-13. The Marine is expected to resume drilling operations.

Drilling and coring continues on two deep tests that are being closely watched. One is the Phillips Petroleum's Snowhill well, which is down 4,600 feet. The other is the Houseman test.

El Dorado Watches Three Deep Tests

El Dorado.—Progress is being made on three deep test wells being drilled in the El Dorado area, according to reports from operators. In addition operators are watching two other wells in the Rainbow City field and other areas east of El Dorado.

The John Houseman well, in north

Louisiana, southwest of Junction City that has caused considerable interest in this area, is now drilling below 3,700 feet after the setting of casing. The well is reported to be checking high on formations encountered in other wells and indications are that the sands in which Rodessa wells are producing may be encountered at a higher level than at Rodessa. The Houseman well is located in the southeast quarter of section 10-23-4.

The J. C. Buckbee Trustee well, northeast of El Dorado, is drilling below 2,700 feet. The well is a scheduled 5,000-foot test. It is in the same area as several shallow wells that have been drilled to the Nacatosh sand, but is the first deep test in the area. The well is located in the northwest quarter of section 13-17-15.

The J. D. Reynolds No. 1 deep test of the Phillips Petroleum Company, in the Snow Hill area of the Smackover field, is reported to be nearing the 4,000-foot level. The well is to be drilled to a contract depth of 6,500 feet, but indications are that unless production is obtained at a lesser depth it will be drilled to about 8,000 feet. The well which is electrically operated, is located in section 17-15-15.

In the Rainbow City area, the Ohio Oil Company is drilling below 2,500 feet on its Furlow No. 4 well in the northwest quarter of section 12-17-14. The well is expected to reach the new deep production sand next week.

In another area southeast of El Dorado the Root Refining Company has set surface casing on another test. The well is located in the southwest quarter of section 37-17-15.

Deep Well to Be Drilled In Calhoun County

Smackover.—Derrick is up on a new deep test in section 36-15-14, Calhoun county, and operators are about ready to begin drilling. It is said that contract calls for a depth of more than 6,500 feet unless oil in paying quantities is struck at a lesser depth.

The well is located on lands of the Freeman Smith Lumber Company northeast of Calion. E. L. Porter, derrick builder of Smackover, said the derrick is one of the strongest he has ever built.

The Reynolds No. 1 deep test of the Phillips Petroleum Company, in section 35-13-18, Ouachita county, near Snow Hill, and about four miles from Smackover, is now down to about 4,000 feet. Cores are being taken night and day and operators are watching the well closely. This deep test will be put down to 8,000 feet unless production is discovered at a lesser depth.

Two Wells at Testing Stage Marine Company Starts New Activity in the Urbana Field.

El Dorado.—One well is testing, and testing of another is scheduled to start Sunday or Monday in El Dorado territory. The well, now in the testing stage, is that of the Root Petroleum Company, in section 36-17-15, southeast of El Dorado. Bailing was in progress late Saturday night after the crew had been engaged in that operation most of the afternoon. Testing of the well is in the Nacatosh sand around 2,228 feet.

The well to start testing, probably Sunday, is the Furlow No. 4 of the Ohio Oil Company, in section 12-17-14, Rainbow City field. Casing was set in this well about the middle of the week, following taking of good cores. The Ohio also is preparing to deepen the Pumphrey No. 4 in section 12-17-14.

There were indications this week of new activity in the Urbana field, southeast of El Dorado after announcement of a new test to be started by the Marine Oil Company. This well will be the Thompson A-9, in section 10-18-13. The Marine is expected to resume drilling operations.

Drilling and coring continues on two deep tests that are being closely watched. One is the Phillips Petroleum's Snowhill well, which is down 4,600 feet. The other is the Houseman test below Junction City in Louisiana, which is drilling at 4,000 feet.

Well Completed, Another Being Swabbed in Rainbow Field.

Special to the Gazette.

El Dorado, March 31.—One well has been completed in the Rainbow City field by the Ohio Oil Company and another is being swabbed in tonight. The latest completion is the Furlow No. 4 test on which the plug was drilled Saturday and swabbing and washing started Sunday. The well was completed yesterday and is flowing by heads at the rate of about 125 barrels of pipe line oil a day.

Operators plan to standardize the well and place it on the beam in the next few days.

Plug has been drilled on the Pumphrey No. 4 well of the same company and swabbing was in process this afternoon. It is expected that the well will be completed tomorrow morning.

Both wells are located in section 12-17-14 and were completed to a depth of about 3,175 feet.

In the Urbana field, the Root Refining Company is drilling down to the sand at about 3,500 feet following an unsuccessful attempt to complete a gas well in the Meakin sand at 2,500 feet. The well is the Thompson A-9 and is located in section 10-18-13.

The McCreslin Oil Company is drilling around 3,000 feet on its Doty Norman No. 3 in section 3-18-13.

Members of the oil fraternity are watching operations at the Phillips deep test well in the Smackover area where casing is being set for testing of an oil sand encountered at 4,906 feet.

New Test to Be Drilled South Of El Dorado.

Special to the Gazette.

El Dorado, April 1.—Drilling of a new test southeast of El Dorado by the Root Refining Company was announced today. Operators are rigging up for a 3,500-foot test a quarter mile east of the well recently completed by the Root company as a gas well.

Operators on the Pumphrey No. 4 well of the Ohio company, in section 12-17-14, are trying to release the swabbing tool that became stuck near the bottom of the hole yesterday.

The new test of the Root company is the White No. 1 and is located in the center of the southeast quarter of the southwest quarter section 36-17-15. It is being drilled by Crosbie and Robinson and is to be a 3,500-foot test.

The Furlow No. 4 well of the Ohio Oil Company in section 12-17-14 in the Rainbow City area continues to flow at a rate of 125 barrels a day and the flow is expected to increase when the well is placed on the beam.

The A. E. Slaughter No. 1 deep test well of Mrs. Mamie Smith McCurry and W. D. Wingfield, in section 9-17-16 in the Lisbon area northwest of El Dorado was spudded in this afternoon. It is near the discovery well in the area and will be taken to a depth of 4,500 feet.

Operators are reaming 400 feet from the bottom of the hole preparing to set nine-inch casing for final testing in the J. D. Reynolds No. 1 deep test of the Phillips Petroleum Company in the Snow Hill area of the Smackover field. A good sand was encountered at 4,906 feet.

Delaying Test At Snow Hill

Uncertainty Develops—New, Deep Oil Sand Hoped For.

El Dorado.—Members of the El Dorado oil fraternity anxiously await testing of the deep test of the Phillips Petroleum Company in the Snow Hill area of the Smackover field.

Although it had been reported several days ago that testing of the well would start Sunday, it was uncertain Saturday night when the work would begin.

Asked about reports that drilling of plug was scheduled to start Sunday, Phillips officials said orders had not been received from the Bartlesville office. Many field followers had planned to be at the well Monday when it was reported bailing probably would be in progress, and are of the opinion that the showing obtained in the well indicates deep sand production for south Arkansas.

Casing was set about a week ago around 4,900 feet after an unsuccessful attempt to make a drill stem test. Cores revealed 12 feet of oolitic lime formation believed to be similar to that found in the Rodessa field in Louisiana.

The well is the J. D. Reynolds No. 1, in section 27-15-15, close to the Ouachita river.

Drilling In of Deep Test Near El Dorado Delayed.

Special to the Gazette.

El Dorado, April 13.—Drilling in of the deep test well of the Phillips Petroleum Company in the Snow Hill area of the Smackover field, previously announced for today, will not be start-

ed until orders have been received from company officials at Bartlesville, Okla., officials here announced.

Casing was set in the well about a week ago at 4,900 feet after an unsuccessful attempt to make a drill stem test. Cores revealed 12 feet of oolitic lime formation believed to be similar to that in the Rodessa field in Louisiana.

The well is the J. D. Reynolds No. 1 in section 27-15-15, near the Ouachita river. The well is planned as a 6,500-foot test.

Deep Well to Be Drilled In Calhoun County

Smackover.—Derrick is up on a new deep test in section 36-15-14, Calhoun county, and operators are about ready to begin drilling. It is said that contract calls for a depth of more than 6,500 feet unless oil in paying quantities is struck at a lesser depth.

The well is located on lands of the Freeman Smith Lumber Company northeast of Calion. E. L. Porter, derrick builder of Smackover, said the derrick is one of the strongest he has ever built.

The Reynolds No. 1 deep test of the Phillips Petroleum Company, in section 35-13-18, Ouachita county, near Snow Hill, and about four miles from Smackover, is now down to about 4,000 feet. Cores are being taken night and day and operators are watching the well closely. This deep test will be put down to 8,000 feet unless production is discovered at a lesser depth.

Oil Well In Sudden Flow Increase

Special to the Gazette.

El Dorado, April 15.—The Furlow No. 4 well of the Ohio Oil Company in section 12-17-14, Rainbow City field, east of El Dorado, today was reported to have broken loose and started flowing at from 1,000 to 1,200 barrels of oil daily instead of the 300 to 400 barrels daily production that it had been making on the beam.

Action of the well also is reported to have caused fittings on the Furlow Nos. 2 and 3 of the same company to come loose, and both are flowing but an estimate could not be obtained on their production.

This is the second time that the phenomenon has occurred in the new deep producing sand of the Rainbow City field. Several months ago a well of the Crosbie & Robinson interests which had been placed on the beam broke loose at night and increased its production several hundred barrels daily.

To Test Reynolds No. 1.

The Phillips Petroleum Company is reported to have sent crews to its deep test well in section 27-15-15 in the Snow Hill area of the Smackover field to make preparations to drill the plug and make final testing.

It will require a day or two to reassemble the drill stem which was dismantled after the drill stem test two weeks ago. The plug is expected to be drilled Friday or Saturday and final testing started Sunday.

The well is the J. D. Reynolds No. 1, about two miles north of Smackover creek in Ouachita county, near the Ouachita river. Casing was set at 4,904 feet after cores were taken from a 12-foot sand of oolitic lime formation similar to that in the deep well area of the Rodessa field of north Louisiana.

Reynolds Test Near Snow Hill To Be Deepened.

El Dorado, Ark., April 27 (AP).—Phillips Petroleum Company officials announced plans today to deepen the J. D. Reynolds No. 1 test near Snow Hill after the flow of gas and distillate was stopped as mud choked the drill stem.

The well, located in section 27-15-15, is the deepest in south Arkansas to produce gas and the only one in the section to produce distillate, or high gravity oil.

Leak in Snow Hill Well Delays Completing Test

El Dorado (AP).—Attaches of the Phillips Petroleum Company awaited arrival of new connections from the Rodessa field in Louisiana today before completion of testing of the Snow Hill area deep well, in section 27-15-15.

A reported leak in the well forced its closure while a hurry call was sent for new and stronger connections. Previous to the closing it was allowed to flow for several hours with a considerable showing of gas reported, along with the flow of water during the cleaning process.

A large amount of water pumped into the hole during the washing-in process Saturday afternoon still remained in the well.

Reynolds No. 1 Continues To Make Fine Showing.

Special to the Gazette.

El Dorado, April 23.—Reopened this morning after being closed in part of last night, the J. D. Reynolds No. 1 deep test of the Phillips Petroleum Company, in section 27-15-15, continued as a huge gasser and gave indications of producing more high gravity oil.

While officials of the Phillips company could not be reached for a statement regarding the amount of distillate the well made yesterday afternoon and last night, reports from the well were that the strong gas flow continues with indications the well may start producing high gravity oil rather than distillate.

Kept under a one-quarter and later a half-inch choke yesterday afternoon and last night, the well was opened up this morning through the two and a half inch tubing. The well was said to be making about the capacity of the pipe as to the production of gas and from eight to 10 barrels an hour of high gravity oil.

The distillate or oil from the well was said to have reduced in gravity from 71 to 73 down to 61. Pressure on the casing this morning was said to be 1,400 pounds with 275 pounds pressure on the tubing.

It was said that the well would be allowed to flow wide open for a day or two to determine what production can be expected from the lime formation encountered at 4,904 feet. In event the well does not start making more oil the hole may be deepened.

Still rated as a big gasser, which if opened wide, would make from 50 to 75 million cubic feet of gas daily, the well this morning was said to be making from 25 to 30 million cubic feet through the two and a half inch tubing.

The gas and oil showings are taken to mean that deep sand production is assured for the El Dorado oil territory.

Deep Test Center of Interest In South Arkansas.

Special to the Gazette.

El Dorado, April 11.—Chief interest of the oil fraternity in south Arkansas this week centers on the deep test well of the Phillips Petroleum Company in the Snow Hill area of the Smackover field which is expected to be completed early next week.

Casing was set in the test early this week and plans have been announced to drill the plug tomorrow and bailing operations will be started Monday.

A 12-foot oil sand was encountered at 4,904 to 4,916 feet in the test and a core taken from the sand showed a good oil saturation. An unsuccessful attempt was made to make a drill stem test of the formation and operators de-

cided to ream out a 12-inch hole and set casing.

The remaining process was completed last week and nine-inch casing set in the hole last Sunday.

The sand encountered in the test is in a lime formation believed to be similar to the oolitic lime found in the Rodessa field of north Louisiana.

The test is the J. D. Reynolds No. 1 and is 330 feet north and 330 feet west of the southeast corner of the southeast quarter of the northwest quarter of section 27-15-15 in Ouachita county. The well is a short distance from the Ouachita river and only a few miles north of a deep test well drilled several years ago by the Lion Oil Refining Company. The Lion well was drilled to a depth of 7,250 feet and abandoned after drilling approximately 1,300 feet through rock salt without penetrating the formation.

Interest is at a high point in the well and considerable lease activity has been reported in the area.

If the test should make a good producer it is expected that several other major companies will start deep test operations in the vicinity in a short time.

Operators are drilling below 2,200 feet on the A. E. Slaughter No. 1 well of Wingfield & McCurry in the Lisbon area northwest of El Dorado. The test is to be taken to a depth of 4,500 feet. Operators announce that the hole will be large enough for deeper drilling if necessary to complete a producer.

The test is 330 feet north and 330 feet west of the southeast corner of the southeast quarter of the southeast quarter of section 9-17-16, in the heart of production in the Lisbon field, and is on the same 80-acre tract as the

PLAN
PAY-AS-YOU
AND A NE
Low Price
New